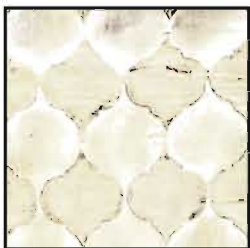


Fabric Requirements



DC3723 Cream
Tile Mosaic
1/2 yard



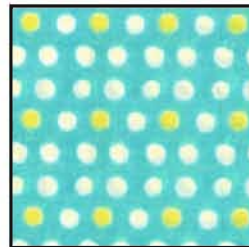
DC3728 Turq
Climbing Lantern Pods
1/2 yard



DC3723 Green
Tile Mosaic
1/2 yard



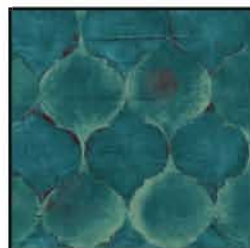
DC3722 Orange
Lantern Vases
1/2 yard



DC3725 Aqua
Painted Polka Dot
1/2 yard



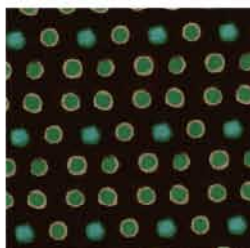
DC3723 Natural
Tile Mosaic
1/2 yard



DC3723 Turq
Tile Mosaic
1/2 yard



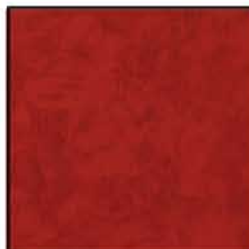
DC3724 Turq
Texture Stripe
1/2 yard



DC3725 Brown
Painted Polka Dot
1/2 yard



CX1087 Sienna
Marble
1 yard



K1148 Red
Krystal
Fat Quarter

**Backing
and
Batting**

54" x 54"

Climbing Lanterns

By Marinda Stewart



Quilt is approximately 48" X 48"

Skill Level: Confident Beginner



118 West 22nd Street 5th Floor New York, NY 10011

Tel: 212.704.0774 Fax: 212.633.0272 Email: info@michaelmillerfabrics.com

www.michaelmillerfabrics.com

Climbing Lanterns

Quilt designed by Marinda Stewart. Quilt measures approximately 48" x 48"

Always measure the quilt top before cutting border lengths.

Fabric:	Yardage:	Cutting:
DC3723 Cream (Fabric A)	1/2 yard	Cut eight 6-1/2" squares.
DC3728 Turq. (Fabric B)	1/2 yard	Cut eight 6-1/2" squares.
DC3723 Green (Fabric C)	1/2 yard	Cut eight 6-1/2" squares.
DC3722 Orange (Fabric D)	1/2 yard	Cut eight 6-1/2" squares.
DC3725 Aqua (Fabric E)	1/2 yard	Cut eight 6-1/2" squares.
DC3723 Natural (Fabric F)	1/2 yard	Cut eight 6-1/2" squares.
DC3723 Turq. (Fabric G)	1/2 yard	Cut eight 6-1/2" squares.
DC3724 Turq. (Fabric H)	1/2 yard	Cut eight 6-1/2" squares.
DC3725 Brown	1/2 yard	Cut five 2-1/2" x width of fabric (WOF) strips.
CX1087 Sienna	1 yard	See instructions to cut the Branches
K1148 Red	Fat 1/4	See instructions to cut thirteen Lanterns.

You will also need:

54" x 54" backing
54" X 54" batting
2 yards of Fusible Web
White Chalk pencil
Threads to match
Sewing needle and thread
Polyester Fiberfill
Scissors, straight pins, acrylic ruler, mat, rotary cutter

Disclaimers

- This pattern is provided as a courtesy to quilt stores, catalogs and quilters. Michael Miller Fabrics, LLC is not responsible for the accuracy of any kits packaged to accompany this pattern. Please direct any inquiries to the kit maker.
- Yardage requirements for this pattern may allow for excess yardage to accommodate specific placement of motifs or to allow for any fussy-cutting to achieve the finished quilt design.
- While every attempt has been made to give accurate measurements, yardage requirements and construction directions, this does not allow for personal variations in measuring, cutting and or sewing. The enclosed directions were used in the construction of the original quilt.

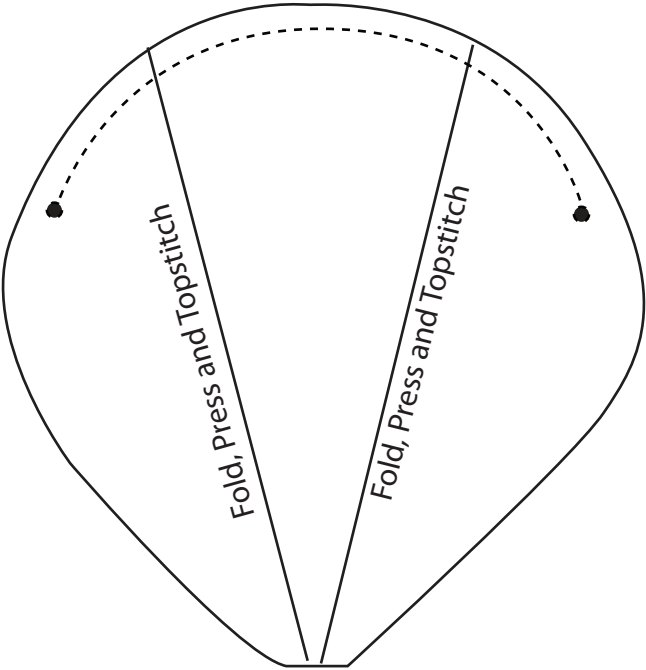
Assembly Instructions:

- 1) To make the background-assemble eight rows with eight blocks in each in the order listed here. Reference the letter next to each listed fabric in the cutting instructions.

ROW 1- A,B,C,H,F,E,D,G	ROW 2-E,F,D,G,A,B,C,H
ROW 3- G,H,B,C,E,D,F,A,	ROW 4- B,E,D,F,H,A,G,C
ROW 5- F,A,G,H,B,C,E,D	ROW 6- C,H,D,E,A,F,B,G
ROW 7- E,B,G,C,D,H,A,F	ROW 8- D,H,A,B,F,G,C,E
 - 2) Sew the rows together in order with ROW 1 at the top to make the quilt top.
 - 3) Following the manufacturer's instructions and iron fusible web to the back side of the 1 yard of CX1087 Sienna.
 - 4) Turn the fusible backed fabric over to the front side. Refer to the quilt photo and freehand draw the branch as shown on the piece of fabric. Cut out the branch on the drawn line.
 - 5) Refer to the quilt photo and press the branch to the pieced background. Finish the raw edges of the branch with a decorative stitch such as a satin or buttonhole stitch.
 - 6) Using the template, trace and cut out thirteen lanterns from the K1148 Red fabric. Make sure to trace the marks from the template onto the lantern using a fabric pencil.
 - 7) To make a dimensional lantern, fold and press on one drawn straight line on the top of the fabric template. Top stitch close to the folded edge. Repeat with the second drawn straight line on the fabric template. Repeat with the remaining lanterns.
 - 8) Using a hand sewing needle and matching thread, gather and sew the top edge of the lantern between the two dots to measure 1". Knot the thread and trim. Repeat with the remaining lanterns.
 - 9) Refer to the quilt photo and scatter the lanterns throughout the branch. Machine applique around the edges of each lantern leaving a 1" opening for stuffing.
 - 10) LIGHTLY stuff each lantern with polyester fiberfill. Continue stitching around each lantern to completely attach it to the quilt top. Repeat with the remaining lanterns.
- NOTE: Over stuffing the lanterns can cause puckering of the completed quilt. Only stuff the lanterns lightly for best results.
- 11) Layer and quilt as desired.
 - 12) Using your favorite method to bind the quilt with the five 2-1/2" x WOF DC3725 Brown strips.

Climbing Lanterns

Lantern Template
Trace Thirteen
K1148 Red



Gather the fabric between the dots