

snapshots QUILT ALONG

Fabric Requirements

You can help by donating to St. Jude Children's Research Hospital®: www.FatQuarterShop.com/Snapshots

Snapshots Quilt Along Quilt Kits and Backing Sets
 available at www.FatQuarterShop.com.

Fabric Requirements for Quilt Top (66 ½" x 88 ½"):

21 Fat Quarters for Snapshots Blocks:



55100-11



55100-12



55100-13



55101-12



55102-19



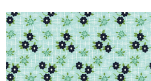
55102-21



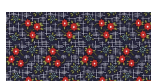
55102-22



55103-14



55104-12



55104-13



55104-14



55104-17



55105-11



55105-12



55105-17



55107-11



55107-14



55108-11



55108-12



55108-17



55108-19

3 ¾ yards
 background fabric



55105-14

2 ½ yards
 Sashing and Borders



45008-22

1 ⅞ yards
 Block Frames and Binding



45010-44

Save eighteen
 3 ½" x 4 ½" rectangles
 from the fat quarters for the
 pieced backing!

Fabric Requirements for Pieced Backing:

10" x 20" piece
 Camera Block



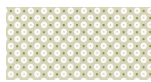
55107-11

½ yard
 Second Border



45010-44

10" x 20" piece
 Camera Block



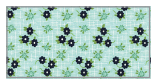
55105-17

1 yard
 First Border



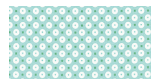
55105-14

Fat Quarter
 Camera Block



55104-12

4 ⅞ yards
 Background



55105-12

Our Snapshots quilt features Daysail by Bonnie & Camille and Dottie by Moda Fabrics.



1-866-826-2069
www.FatQuarterShop.com
www.YouTube.com/FatQuarterShop