

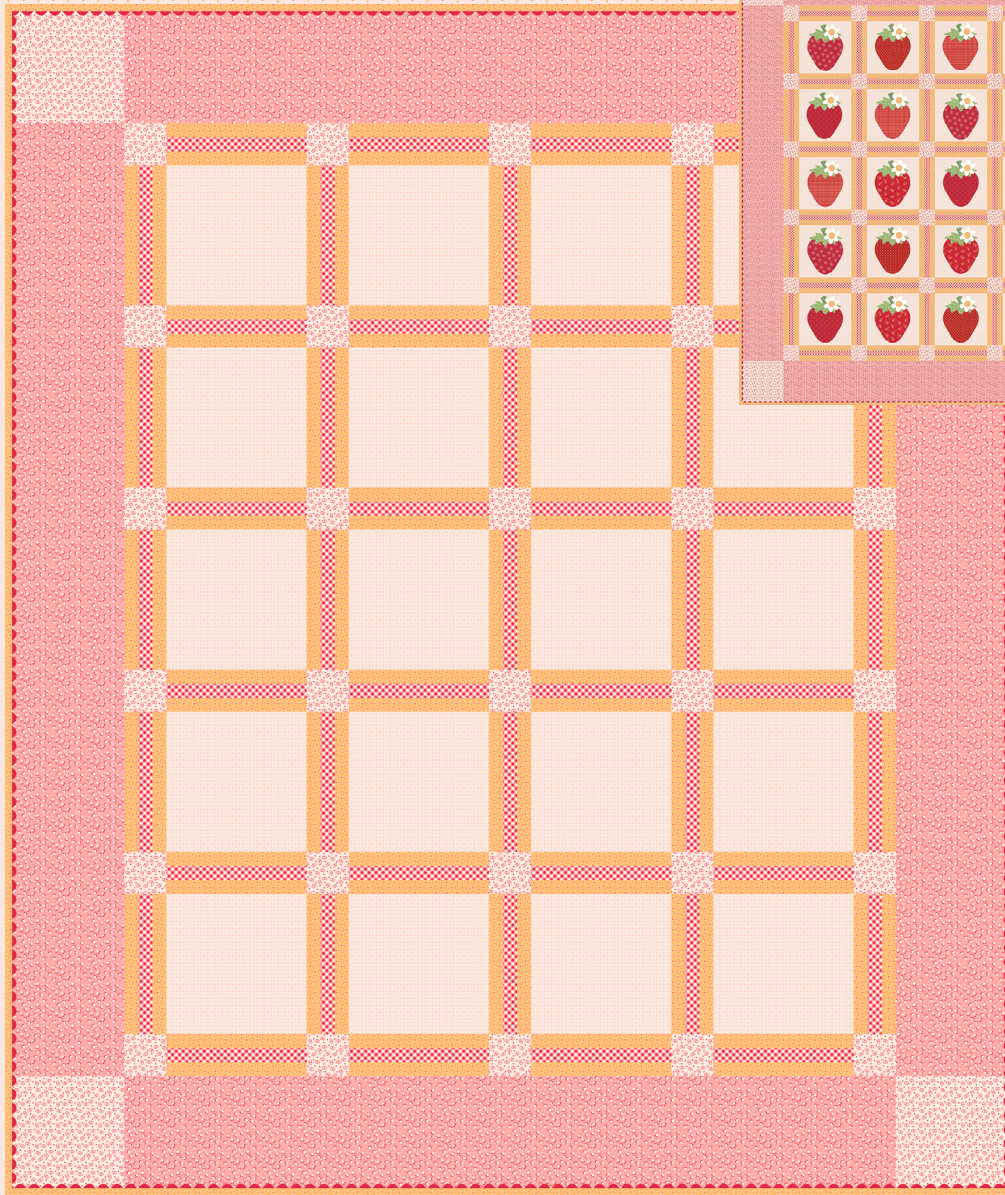
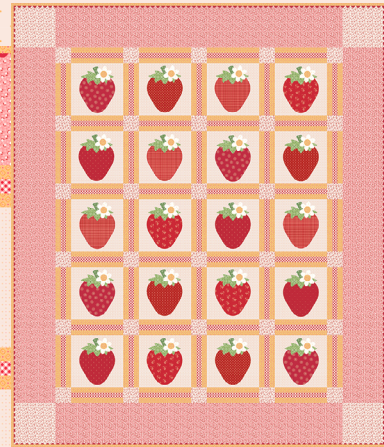
Vintage Strawberries Quilt

by Lori Holt of Bee in my Bonnet



Setting Instructions

Vintage Strawberries



71" x 84"



by Lori Holt of Bee in my Bonnet

Vintage Strawberries Quilt Setting Instructions

FINISHED QUILT SIZE 71" × 84"

WOF = Width of Fabric, LOF = Length of Fabric

This guide requires a basic knowledge of quilting techniques and terminology. The quilt and block diagrams portrayed are virtual images. The layout and look of your project may differ when using actual fabric.

These instructions are intended to be used in conjunction with Lori Holt's Bee Dots fabric collection and Bee Vintage Sew Simple Shapes™. This quilt is ideal for a block-of-the-month and kit programs. They're also awesome for the quilter who wants to try Lori's applique method. Enjoy and share your quilt using the hashtags [#beedotsfabric](#), [#vintagestrawberriesquilt](#), [#rileyblakedesigns](#), and [#iloverileyblake](#).

FABRIC REQUIREMENTS

⅝ Yard C12551-RED Carolyn Bee Gingham
⅝ Yard C14181-BERRY Lucille
1 ¾ Yards C14179-MARIGOLD Frances (includes binding)
2 Yards C13086-CORAL Suzanne Bee Vintage
2 ½ Yards C14182-MARIGOLD Thelma

Suggested Backing:

2 ⅓ Yards WB12040-RED Bee Plaids Homemade Wide Back

NOTIONS/SUPPLIES

STT-30021 Lori Holt Bee Vintage Sew Simple Shapes™
10 Yards STVT-14771 Large Jazzberry Jam Vintage Trim
Lori Holt Seams Sew Easy™ Seam Guide
STTI-5531 Lori Holt Cute Cuts™ Trim-it™ 10 ½" Square Ruler

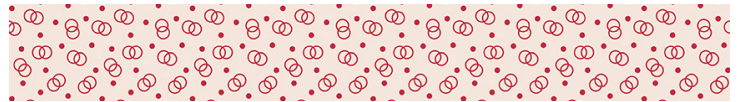
Note: All appliqué block backgrounds are cut a little larger than unfinished size to allow for trimming up using the 10 ½" Trim It™ Ruler.

CUTTING REQUIREMENTS



C12551-RED Carolyn Bee Gingham

Cut (13) 1 ½" × WOF strips for sashing



C14181-BERRY Lucille

Cut (1) 8 ½" × WOF strip, subcut:

(4) 8 ½" × 8 ½" squares for border cornerstones

Cut (3) 3 ½" × WOF strips, subcut:

(30) 3 ½" × 3 ½" squares for cornerstones



C14179-MARIGOLD Frances

Cut (26) 1 ½" × WOF strips for sashing

Cut (9) 2 ½" × WOF strips for binding



C13086-CORAL Suzanne Bee Vintage

Cut (6) 8 ½" × LOF strips for Outer Border



C14182-MARIGOLD Thelma

Cut (7) 12" × WOF strips, subcut:

(20) 12" × 12" squares for block backgrounds

Vintage Strawberries Quilt Setting Instructions

QUILT ASSEMBLY

Use the cover image, corresponding diagrams, cutting list, and Quilt Layout Diagram on page 3 for reference. **Note:** Arrows indicate pressing directions in order for the seams to nestle together at each intersection.

1. Sew (1) $1\frac{1}{2}$ " \times WOF Marigold Frances strip to both edges of (1) $1\frac{1}{2}$ " \times WOF Red Carolyn Bee Gingham strip. Press. Strip set should measure $3\frac{1}{2}$ " \times WOF. Repeat to make a total of 13 strip sets.



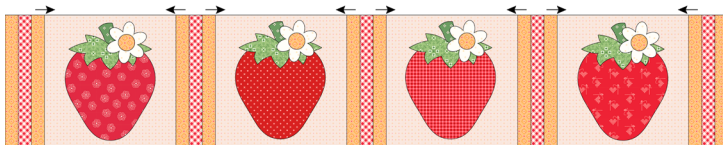
Make 13

2. Cut (49) $3\frac{1}{2}$ " \times $10\frac{1}{2}$ " segments from the strip sets to make Sashing Strips.



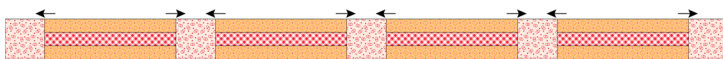
$10\frac{1}{2}$ " Sashing Strips

3. Sew (4) Vintage Strawberries Blocks together, alternating with (5) Sashing Strips as shown, to make Block Rows, measuring $55\frac{1}{2}$ " \times $10\frac{1}{2}$ " unfinished. Repeat to make a total of (5) Block Rows.



Block Row

4. Sew (5) $3\frac{1}{2}$ " \times $3\frac{1}{2}$ " Berry Lucille squares and (4) pieced sashing strips together, then press. Make a total of (6) horizontal Sashing Rows.



Sashing Row

5. From top to bottom, sew (6) Sashing Rows together, alternating with (5) Block Rows to complete the quilt center, measuring $55\frac{1}{2}$ " \times $68\frac{1}{2}$ ".

Outer Border

6. Sew $8\frac{1}{2}$ " \times LOF Coral Suzanne Bee Vintage Outer Border strips together end-to-end. Trim to create a total of (2) $8\frac{1}{2}$ " \times $68\frac{1}{2}$ " Side Outer Border strips and (2) $8\frac{1}{2}$ " \times $55\frac{1}{2}$ " Top/Bottom Outer Border strips.
7. Sew a Side Outer border strip to the left and right sides of the quilt center.
8. Sew an $8\frac{1}{2}$ " \times $8\frac{1}{2}$ " Berry Lucille cornerstone square to each end of the $8\frac{1}{2}$ " \times $55\frac{1}{2}$ " Top/Bottom Outer Borders. Make a total of (2). Each Top/Bottom Outer Border should measure $71\frac{1}{2}$ " \times $8\frac{1}{2}$ " unfinished.
9. Sew a Top/Bottom Outer Border with cornerstones to the top and bottom of the quilt center to complete the quilt top. Quilt should measure $71\frac{1}{2}$ " \times $84\frac{1}{2}$ " unfinished.

Finishing

Finish the quilt by layering the quilt top, batting, and backing. Baste quilt layers together and quilt as desired. Finish with optional trim (see below) and bind with the $2\frac{1}{2}$ " Marigold Frances binding strips. Add any remaining embellishments designated for the blocks.

Have fun and enjoy the journey of making your quilt.

Optional Vintage Trim

Cut (2) pieces of Large Jazzberry Jam Vintage Trim the same length as the width of the quilt (approx. $71\frac{1}{2}$ "). Lay the trim even with the raw edges and machine baste in place $\frac{1}{8}$ " from the raw edge. All of the trim should be on the quilt. Repeat to attach trim to the sides of the quilt (approx. $84\frac{1}{2}$ "). Bind your quilt using your favorite method. Note an $\frac{1}{8}$ " of the trim will show on the top of the quilt after binding.

Stay up-to-date on all Lori Holt happenings and projects:

 Visit Lori's Blog at BeInMyBonnetCo.blogspot.com

 Subscribe to the Lori Holt YouTube channel

 Follow her on Instagram at @beelori1

Share your quilt using hashtags #beedotsfabric, #vintagestrawberriesquilt, #rileyblakedesigns, and #iloverileyblake

Vintage Strawberries Quilt Setting Instructions

QUILT LAYOUT DIAGRAM

