

Moonbeams

2024 CHARITY QUILT & STITCH ALONG

RELEASE FOUR



Cross Stitch Information

Stitch Count 104w x 104h

Finished Size 7.5" x 7.5"

Cloth Navy 14 Count Aida by Wichelt Imports (SKU# 357-98A)

Thread 2 strands of DMC or Classic Colorworks

Model Finishing

Model was stitched using Classic Colorworks thread.

Finished using Strawberry Lemonade fabric by Sherri & Chelsi for Moda Fabrics (SKU# 37675-31 and SKU# 37676-17) and the Gray Wooden Primrose Cross Stitch Display.

Additional Supplies

Moonbeams Classic Colorworks Thread Pack & Floss Box

Moonbeams Enamel Needle Minder

Thread

Symbols	Color	DMC	Skeins	Classic Colorworks	Skeins
★	Red	321	1	Ribbon Red	1
T	Pink	761	1	Cobbled Peach	1
X	Green	733	1	Bean Sprout	1
●	Aqua	3848	1	Caribbean Waters	1
○	White	3865	2	Bamboo	2



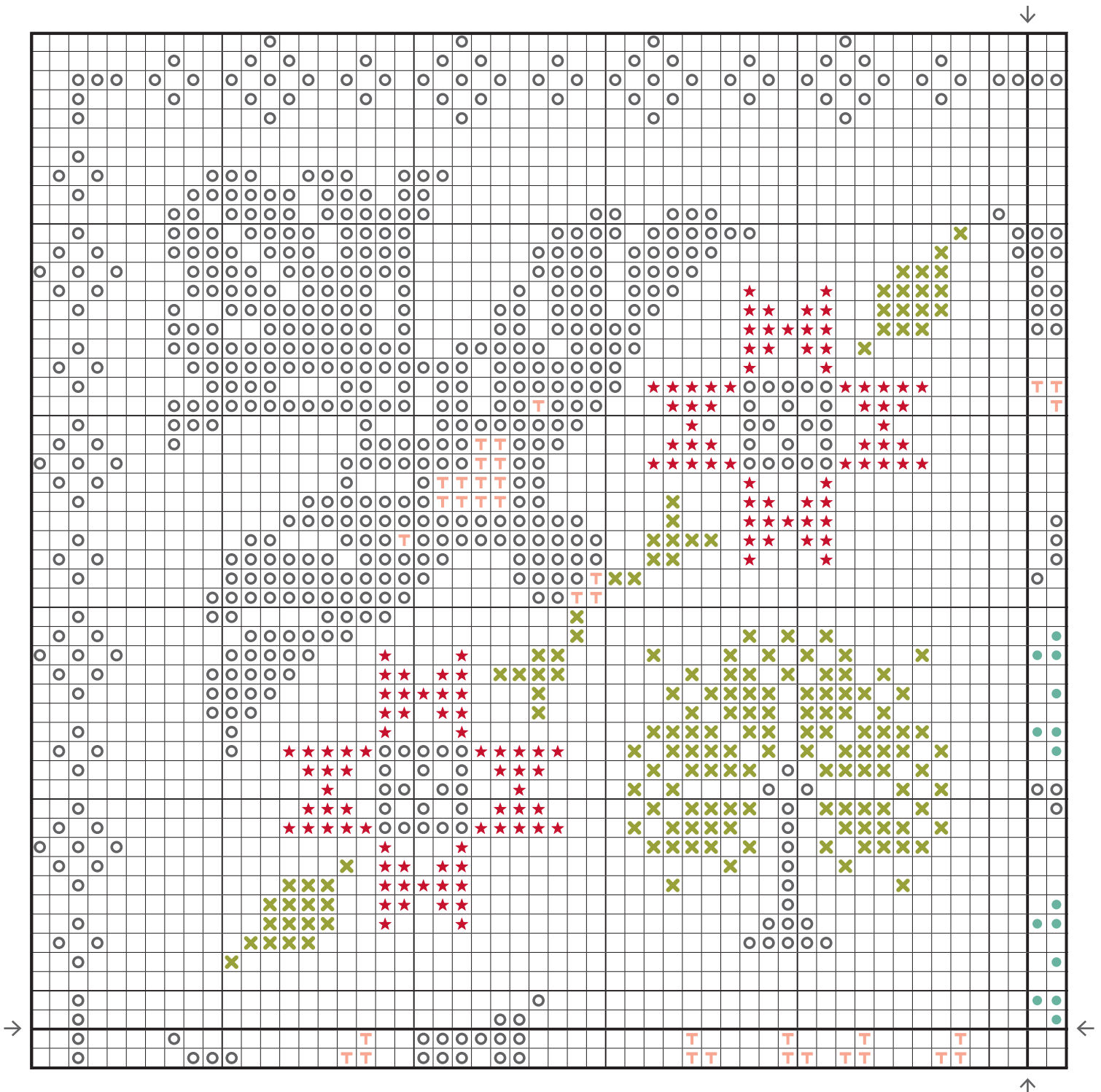
1-866-826-2069 ~ www.FatQuarterShop.com ~ Donate to Make a Wish! <http://site.wish.org/goto/moonbeams>

Copyright 2024 Fat Quarter Shop, LLC. All rights reserved. Duplication of any kind is prohibited. This pattern may be used for personal purposes only and may not be reproduced without the express written permission from the Fat Quarter Shop. This pattern may not be used for commercial purposes.

Moonbeams

2024 CHARITY QUILT & STITCH ALONG

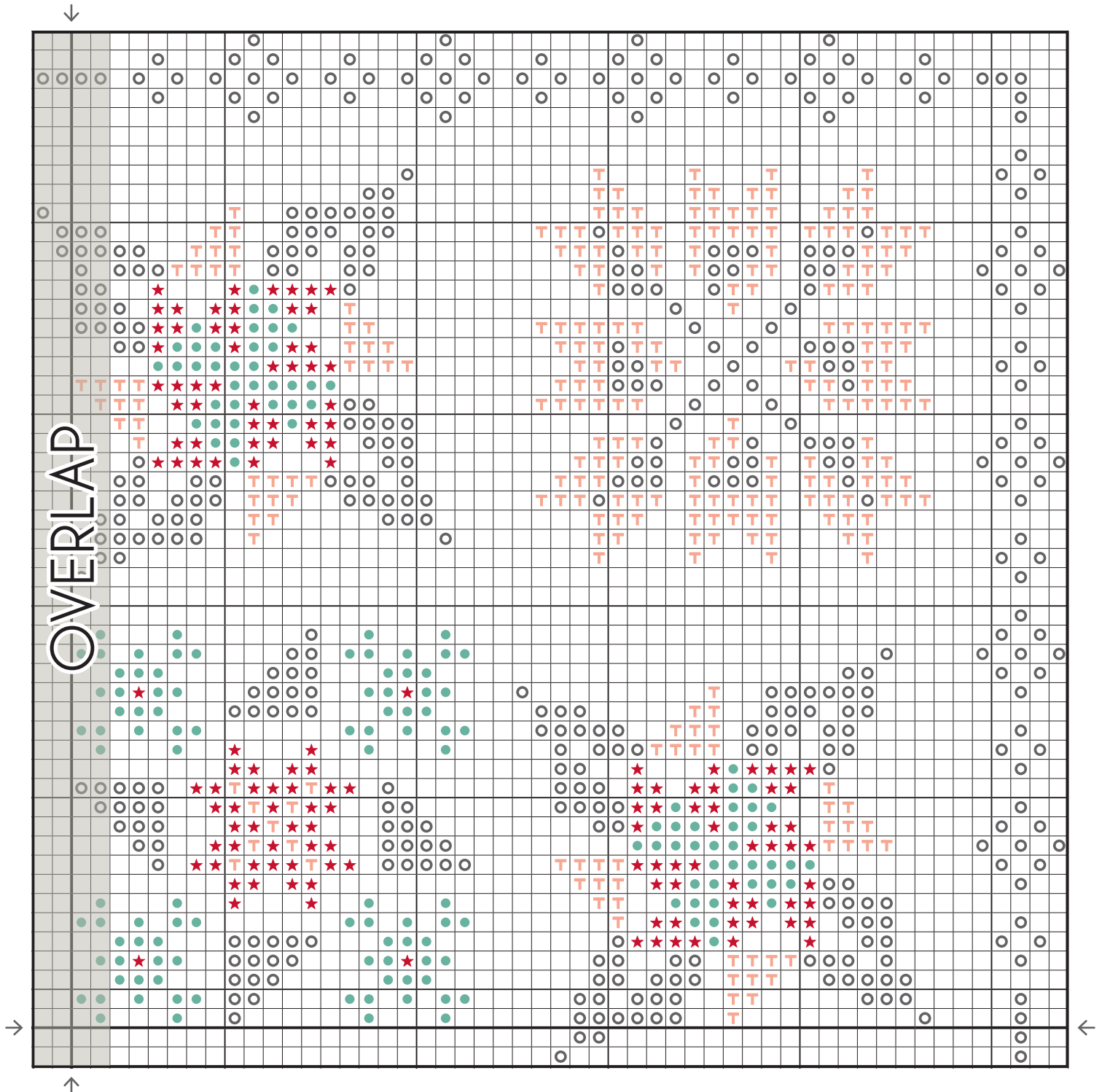
RELEASE FOUR



Moonbeams

2024 CHARITY QUILT & STITCH ALONG

RELEASE FOUR



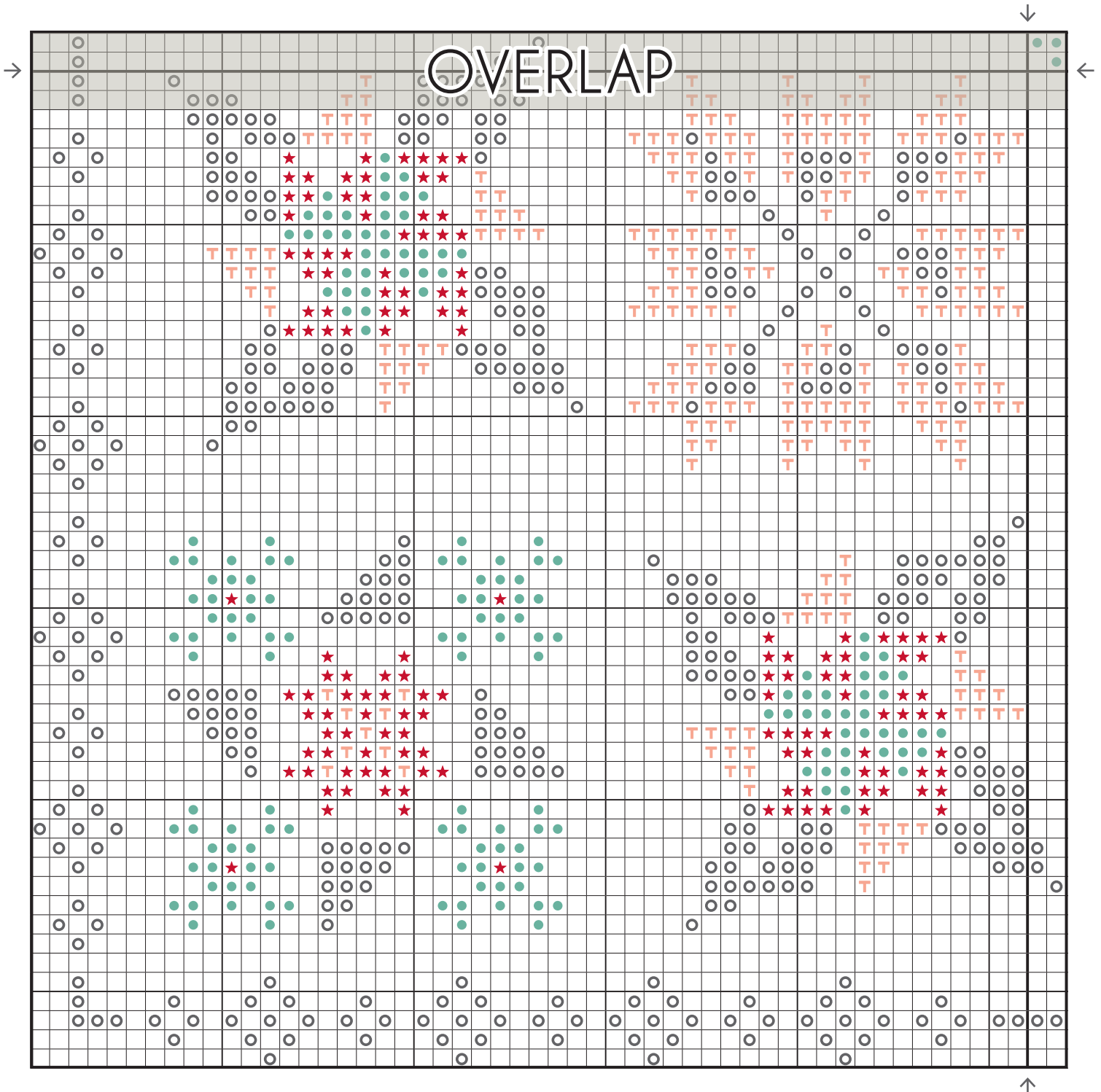
1-866-826-2069 ~ www.FatQuarterShop.com ~ Donate to Make a Wish! <http://site.wish.org/goto/moonbeams>

Copyright 2024 Fat Quarter Shop, LLC. All rights reserved. Duplication of any kind is prohibited. This pattern may be used for personal purposes only and may not be reproduced without the express written permission from the Fat Quarter Shop. This pattern may not be used for commercial purposes.

Moonbeams

2024 CHARITY QUILT & STITCH ALONG

RELEASE FOUR



Moonbeams

2024 CHARITY QUILT & STITCH ALONG

RELEASE FOUR



Moonbeams

2024 CHARITY QUILT & STITCH ALONG

RELEASE FOUR

