

Mercantile Sampler Sew Along Guide

by Lori Holt of Bee in my Bonnet



88" x 88"






How To Use This Sew Along Guide

The Mercantile Sampler Sew Along Guide is designed to be a GUIDE. Please note it is NOT a pattern. It was built for cutting and organizational purposes ONLY and designed for you to Bee Prepared to follow along with Lori's detailed instructions in her Mercantile Sampler Sew Along blog posts and videos.

Please see pages 2-3 for the schedule of each block's instructional blog post. Visit Lori's blog at beeinmybonnetco.blogspot.com on the listed dates for the detailed instructions for that date's block.



Stay up-to-date on all Lori Holt happenings and projects:

-  Visit Lori's Blog at BeeInMyBonnetCo.blogspot.com
-  Subscribe to the Lori Holt YouTube channel
-  Follow her on Instagram at @beelori1

Enjoy and share your quilt using the hashtags #mercantilesamplerquilt, #beeinmybonnet, #rileyblakedesigns, and #iloverileyblake.

Mercantile Sew Along Schedule



Starting Monday, January 8, 2024

January 8	Bee Prepared
January 29	Birthday Cake
February 2	Angel Star
February 5	Maple Leaf
February 9	Grandma's Quilt
February 12	Puzzle
February 16	Duck and Ducklings
February 19	Spool and Bobbins
February 23	Soda Pop Star
February 26	Shopping Basket
March 1	Nine-Patch Star
March 4	Peony
March 8	Chickadee
March 11	Town Days
March 15	Yard Goods

Mercantile Sew Along Schedule



Starting Monday, January 8, 2024

March 18	Churn Dash
March 22	Flower Pot
March 25	Cross Roads
March 29	Sweet Dreams
April 1	Memorial Day
April 5	Ladies Aid
April 8	Patchwork Star
April 12	Quarters and Dimes
April 15	Pine Tree
April 19	Playground
April 22	Thrifty
April 26	The Big Finish



Bee Prepared for our next sew along,
How To Build A Scarecrow, on April 29, 2024!

Mercantile Sampler Sew Along Guide

FINISHED QUILT SIZE 88" x 88"

WOF = Width of Fabric, LOF = Length of Fabric

This guide requires a basic knowledge of quilting techniques and terminology. The quilt and block diagrams portrayed are virtual images. The layout and look of your project may differ when using actual fabric.

The guide is intended to be used in conjunction with Lori Holt's Mercantile Sampler Sew Along. Join Lori on her blog every Monday starting January 29, 2024 at beeinmybonnetco.blogspot.com for weekly instructions. Visit [Lori's YouTube Channel](#) during Week 1 and don't forget to watch for her Bee Prepared blog post on January 8, 2024.

*NOTE: All appliqué block backgrounds are cut a little larger than unfinished size to allow for trimming up.

The appliqué portions of the quilt are made using Lori's applique method. The link below to the Week 1 video of a previous Sew Along on Lori's YouTube Channel shows her appliqué technique:

<https://www.youtube.com/watch?v=xe7nvV6BHXy>.

FABRIC REQUIREMENTS

Fat Eighth of Each:

C14385-COTTAGE Dainty
C14386-FROSTING Darling
C14387-SEAGLASS Dearest
C14388-DENIM Delightful
C14388-TEADYE Delightful
C14389-ALPINE Heirloom
C14389-TEADYE Heirloom
C14390-CORAL Memories
C14390-LEAF Memories
C14391-SONGBIRD Nostalgic
C14394-ESPRESSO Remembrance
C14395-RAINDROP Reminisce
C14396-TEAROSE Sentimental
C14396-RAINDROP Sentimental
C14397-ESPRESSO Sweet
C14398-BASIL Tenderhearted
C14399-MARIGOLD Timeless
C14399-RAINDROP Timeless
C14401-COTTAGE Yesterday
C14401-LETTUCE Yesterday

Fat Quarter of Each:

C14385-LETTUCE Dainty
C14386-MARIGOLD Darling
C14387-CORAL Dearest
C14394-DENIM Remembrance
C14395-CIDER Reminisce
C14397-TEAROSE Sweet

¾ Yard of Each:

C14380-RAINDROP Lovely
C14380-TEAROSE Lovely



Mercantile Sampler Sew Along Guide

Fabric Cutting Guide (WOF = Width of Fabric, LOF = Length of Fabric)

Always be mindful when cutting pieces from each fabric in your kit by cutting **LARGEST PIECES FIRST**.

FABRIC REQUIREMENTS (cont'd.)

C14381-MULTI Heritage
C14382-MULTI Charming
C14383-COTTAGE Beloved
C14383-RILEYGREEN Beloved
C14384-LETTUCE Legacy
C14384-MARIGOLD Legacy
C14392-SEAGLASS Quaint
C14392-TEADYE Quaint
C14393-SCHOOLHOUSE Recollect
C14393-ALPINE Recollect
C14400-CORAL Treasure
C14400-WEDGEWOOD Treasure

$\frac{3}{4}$ Yard C14398-RILEYRED Tenderhearted (includes borders)
 $\frac{7}{8}$ Yard C14391-TEADYE Nostalgic (includes binding)
1 $\frac{1}{4}$ Yards C14405-DENIM Sweet Background
1 $\frac{1}{4}$ Yards C14402-LATTE Darling Background
1 $\frac{1}{2}$ Yards C14403-LETTUCE Delightful Background
2 $\frac{1}{2}$ Yards C14404-CORAL Reminisce Background
2 $\frac{3}{4}$ Yards WB14408-MULTI Adore Wide Back (Backing)

NOTIONS/SUPPLIES

STRULER-4159 Lori Holt Circle Ruler 12"
ST-34006 Lori Holt 14" Precut Sew-in Interfacing
Bee in my Bonnet Design Boards
N039-7803 Point 2 Point Turner
N093-GLUE Sue Daley Designs Appliqué Glue
Seams Sew Easy™ Seam Guide
ST-8644 Lori Holt Applique Pretty Pins™
ST-9439 Lori Holt Applique Nifty Needles™
Lori Holt Cute Cuts™ Rulers:
STTI-34007 Lori Holt Cute Cuts™ Trim-it™ Ruler 2 $\frac{1}{4}$ " × 2 $\frac{1}{4}$ "
STTI-5524 Lori Holt Cute Cuts™ Trim-it™ Ruler 2 $\frac{1}{2}$ " × 2 $\frac{1}{2}$ "
STTI-5525 Lori Holt Cute Cuts™ Trim-it™ Ruler 3 $\frac{1}{2}$ " × 3 $\frac{1}{2}$ "
STTI-34008 Lori Holt Cute Cuts™ Trim-it™ Ruler 4" × 4"
STTI-5526 Lori Holt Cute Cuts™ Trim-it™ Ruler 4 $\frac{1}{2}$ " × 4 $\frac{1}{2}$ "
STTI-5527 Lori Holt Cute Cuts™ Trim-it™ Ruler 5 $\frac{1}{2}$ " × 5 $\frac{1}{2}$ "
STTI-21862 Lori Holt Cute Cuts™ Trim-it™ Ruler 14 $\frac{1}{2}$ " × 14 $\frac{1}{2}$ "
ST-34021 Lori Holt Cute Cuts™ $\frac{1}{4}$ " Marking Ruler Set
ST-34018 Mercantile Bee Keeper Binder
RTY-2C-RED Olfa 45mm Rotary Cutter
ST-33034 Lori Holt Busy Bee Mechanical Pencils
ST-13561 Lori Holt Sew Handy Stickers
ST-11311 12" Tailor's Clapper

CUTTING INSTRUCTIONS



C14385-Cottage Dainty (Fat Eighth)

Cut (1) 4 $\frac{3}{4}$ " × 4 $\frac{3}{4}$ " square (I) for Peony Block

Cut (4) 2 $\frac{1}{4}$ " × 2 $\frac{1}{4}$ " squares (D) for Nine-Patch Star Block



C14386-Frosting Darling (Fat Eighth)

Cut (4) 2 $\frac{3}{4}$ " × 2 $\frac{3}{4}$ " squares (E) for Puzzle Block

Cut (4) 2 $\frac{3}{4}$ " × 2 $\frac{3}{4}$ " squares (E) for Thrifty Block



C14387-Sea Glass Dearest (Fat Eighth)

Cut (6) 3" × 3" squares (C) for Yard Goods Block

Cut (2) 3" × 3" squares (G) for Flower Pot Block



C14388-Denim Delightful (Fat Eighth)

Cut (4) 2 $\frac{3}{4}$ " × 2 $\frac{3}{4}$ " squares (D) for Soda Pop Star Block

Cut (1) 2" × 2" square (H) for Patchwork Star Block



C14388-Tea Dye Delightful (Fat Eighth)

Cut (4) 3 $\frac{1}{4}$ " × 3 $\frac{1}{4}$ " squares (C) for Sweet Dreams Block

Cut (2) 3" × 3" squares (D) for Yard Goods Block

Cut (4) 2 $\frac{1}{4}$ " × 2 $\frac{1}{4}$ " squares (E) for Nine-Patch Star Block

Cut (2) 2 $\frac{1}{4}$ " × 2 $\frac{1}{4}$ " squares (G) for Pine Tree Block

Mercantile Sampler Sew Along Guide



C14389-Alpine Heirloom (Fat Eighth)

Cut (4) $4\frac{1}{4}'' \times 4\frac{1}{4}''$ squares (D) for Chickadee Block
 Cut (1) $3\frac{3}{4}'' \times 3\frac{3}{4}''$ square (J) for Maple Leaf Block
 Cut (2) $3'' \times 3''$ squares (G) for Shopping Basket Block
 Cut (1) $2\frac{1}{4}'' \times 2\frac{1}{4}''$ square (E) for Duck and Ducklings Block



C14389-Tea Dye Heirloom (Fat Eighth)

Cut (1) $2\frac{1}{4}'' \times 5\frac{3}{4}''$ rectangle (C) for Playground Block
 Cut (4) $2\frac{1}{4}'' \times 2\frac{1}{4}''$ squares (C) for Nine-Patch Star Block



C14390-Coral Memories (Fat Eighth)

Cut (3) $4\frac{1}{2}'' \times 4\frac{1}{2}''$ squares (D) for Birthday Cake Block
 Cut (1) $2\frac{1}{4}'' \times 5\frac{3}{4}''$ rectangle (E) for Playground Block
 Cut (4) $2'' \times 2''$ squares (F) for Sweet Dreams Block



C14390-Leaf Memories (Fat Eighth)

Cut (2) $3'' \times 3''$ squares (B) for Town Days Block
 Cut (4) $2\frac{3}{4}'' \times 5''$ rectangles (B) for Soda Pop Star Block



C14391-Songbird Nostalgic (Fat Eighth)

Cut (2) $3'' \times 3''$ squares (E) for Town Days Block
 Cut (4) $1\frac{1}{2}'' \times 4\frac{1}{2}''$ rectangles (E) for Grandma's Quilt Block



C14394-Espresso Remembrance (Fat Eighth)

Cut (4) $4'' \times 4''$ squares (C) for Duck and Ducklings Block
 Cut (1) $4'' \times 4''$ square (E) for Flower Pot Block
 Cut (4) $2\frac{1}{2}'' \times 2\frac{1}{2}''$ squares (D) for Grandma's Quilt Block
 Cut (4) $1\frac{1}{2}'' \times 4''$ rectangles (F) for Town Days Block



C14395-Raindrop Reminisce (Fat Eighth)

Cut (1) $3\frac{1}{2}'' \times 3\frac{1}{2}''$ square (H) for Peony Block
 Cut (2) $3'' \times 3''$ squares (H) for Angel Star Block
 Cut (4) $3'' \times 3''$ squares (C) for Ladies Aid Block
 Cut (4) $2\frac{3}{4}'' \times 2\frac{3}{4}''$ squares (D) for Puzzle Block
 Cut (1) $2\frac{1}{4}'' \times 2\frac{1}{4}''$ square (F) for Cross Roads Block



C14396-Tea Rose Sentimental (Fat Eighth)

Cut (4) $4\frac{1}{2}'' \times 4\frac{1}{2}''$ squares (C) for Churn Dash Block
 Cut (1) $3\frac{3}{4}'' \times 3\frac{3}{4}''$ square (F) for Maple Leaf Block



C14396-Raindrop Sentimental (Fat Eighth)

Cut (1) $4'' \times 4''$ square (F) for Angel Star Block
 Cut (1) $2\frac{1}{4}'' \times 5\frac{3}{4}''$ rectangle (F) for Playground Block



C14397-Espresso Sweet (Fat Eighth)

Cut (1) $3\frac{3}{4}'' \times 3\frac{3}{4}''$ square (D) for Maple Leaf Block
 Cut (1) $2\frac{1}{4}'' \times 4''$ rectangle (H) for Flower Pot Block
 Cut (1) $2\frac{1}{4}'' \times 2\frac{1}{4}''$ square (F) for Nine-Patch Star Block
 Cut (1) $2\frac{1}{4}'' \times 2\frac{1}{4}''$ square (I) for Flower Pot Block
 Cut (1) $1\frac{1}{2}'' \times 1\frac{1}{2}''$ square (F) for Grandma's Quilt Block



C14398-Basil Tenderhearted (Fat Eighth)

Cut (1) $4'' \times 4''$ square (J) for Memorial Day Block
 Cut (1) $3\frac{1}{2}'' \times 3\frac{1}{2}''$ square (J) for Peony Block
 Cut (2) $3'' \times 3''$ squares (I) for Memorial Day Block
 Cut (2) $2\frac{1}{4}'' \times 4''$ rectangles (E) for Pine Tree Block

Mercantile Sampler Sew Along Guide



C14399-Marigold Timeless (Fat Eighth)

Cut (1) $3\frac{3}{4}$ " \times $3\frac{3}{4}$ " square (I) for Maple Leaf Block
Cut (2) 3" \times 3" squares (G) for Memorial Day Block
Cut (4) $2\frac{1}{4}$ " \times $2\frac{1}{4}$ " squares (D) for Cross Roads Block



C14399-Raindrop Timeless (Fat Eighth)

Cut (2) $5\frac{1}{4}$ " \times $5\frac{1}{4}$ " squares (E) for Quarters and Dimes Block
Cut (1) $3\frac{3}{4}$ " \times $3\frac{3}{4}$ " square (E) for Maple Leaf Block



C14401-Cottage Yesterday (Fat Eighth)

Cut (1) 5" \times 5" square (D) for Thrifty Block
Cut (4) $2\frac{1}{2}$ " \times $2\frac{1}{2}$ " squares (D) for Sweet Dreams Block



C14401-Lettuce Yesterday (Fat Eighth)

Cut (1) $4\frac{3}{4}$ " \times $4\frac{3}{4}$ " square (G) for Peony Block
Cut (1) 3" \times 3" square (H) for Memorial Day Block
Cut (4) 3" \times 3" squares (D) for Pine Tree Block
Cut (1) $2\frac{1}{4}$ " \times $5\frac{3}{4}$ " rectangle (D) for Playground Block



C14385-Lettuce Dainty (Fat Quarter)

Cut (1) $4\frac{3}{4}$ " \times $4\frac{3}{4}$ " square (F) for Peony Block
Cut (2) $4\frac{1}{2}$ " \times $4\frac{1}{2}$ " squares (E) for Birthday Cake Block
Cut (1) $3\frac{3}{4}$ " \times $3\frac{3}{4}$ " square (G) for Maple Leaf Block
Cut (4) 3" \times 3" squares (C) for Cross Roads Block
Cut (4) 3" \times 3" squares (C) for Pine Tree Block
Cut (4) $2\frac{3}{4}$ " \times $2\frac{3}{4}$ " squares (E) for Spool and Bobbins Block
Cut (4) $2\frac{1}{2}$ " \times $2\frac{1}{2}$ " squares (D) for Churn Dash Block
Cut (4) 2" \times 2" squares (F) for Patchwork Star Block



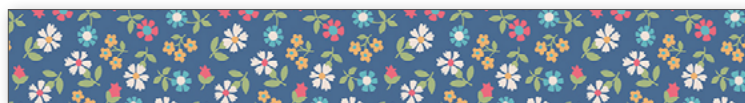
C14386-Marigold Darling (Fat Quarter)

Cut (2) $3\frac{1}{4}$ " \times $3\frac{1}{4}$ " squares (C) for Grandma's Quilt Block
Cut (2) 3" \times 3" squares (C) for Town Days Block
Cut (4) $2\frac{3}{4}$ " \times $2\frac{3}{4}$ " squares (C) for Soda Pop Star Block
Cut (1) $2\frac{1}{2}$ " \times $2\frac{1}{2}$ " square (E) for Churn Dash Block
Cut (4) $2\frac{1}{2}$ " \times $2\frac{1}{2}$ " squares (G) for Quarters and Dimes Block
Cut (4) $1\frac{3}{4}$ " \times $1\frac{3}{4}$ " squares (F) for Thrifty Block
Cut (4) $1\frac{1}{2}$ " \times 2" rectangles (D) for Patchwork Star Block



C14387-Coral Dearest (Fat Quarter)

Cut (1) $3\frac{3}{4}$ " \times $3\frac{3}{4}$ " square (H) for Maple Leaf Block
Cut (4) $3\frac{1}{4}$ " \times $3\frac{1}{4}$ " squares (B) for Grandma's Quilt Block
Cut (4) 3" \times 3" squares (D) for Ladies Aid Block
Cut (2) $2\frac{3}{4}$ " \times $2\frac{3}{4}$ " squares (F) for Spool and Bobbins Block
Cut (4) $2\frac{1}{4}$ " \times $2\frac{1}{4}$ " squares (D) for Ducks and Ducklings Block



C14394-Denim Remembrance (Fat Quarter)

Cut (2) $5\frac{1}{4}$ " \times $5\frac{1}{4}$ " squares (E) for Patchwork Star Block
Cut (4) $2\frac{3}{4}$ " \times 5" rectangles (B) for Puzzle Block
Cut (4) $2\frac{3}{4}$ " \times $2\frac{3}{4}$ " squares (C) for Puzzle Block
Cut (4) $2\frac{1}{2}$ " \times $2\frac{1}{2}$ " squares (E) for Chickadee Block



C14395-Cider Reminisce (Fat Quarter)

Cut (4) $5\frac{1}{4}$ " \times $5\frac{1}{4}$ " squares (E) for Angel Star Block
Cut (3) 3" \times $5\frac{1}{2}$ " rectangles (D) for Shopping Basket Block
Cut (1) 3" \times 3" square (E) for Shopping Basket Block
Cut (1) $2\frac{1}{4}$ " \times 6" rectangle (E) for Ladies Aid Block
Cut (2) $2\frac{1}{4}$ " \times $2\frac{1}{4}$ " squares (F) for Ladies Aid Block
Cut (1) 2" \times 2" square (K) for Peony Block

Mercantile Sampler Sew Along Guide



C14397-Tea Rose Sweet (Fat Quarter)

- Cut (2) 3" x 3" squares (D) for Town Days Block
- Cut (4) 3" x 3" squares (F) for Flower Pot Block
- Cut (1) 2 1/4" x 5 3/4" rectangle (E) for Memorial Day Block
- Cut (1) 2 1/4" x 4" rectangle (F) for Memorial Day Block
- Cut (8) 2 1/4" x 2 1/4" squares (B) for Nine-Patch Star Block
- Cut (1) 1 1/2" x 1 1/2" square (F) for Chickadee Block
- Cut (4) 1 1/2" x 1 1/2" squares (G) for Patchwork Star Block



C14380-Raindrop Lovely (1/3 Yard)

- Cut (1) 8" x 8" square for Maple Leaf Block
- Cut (1) 8" x 8" square for Spool and Bobbins Block
- Cut (1) 8" x 8" square for Peony Block
- Cut (1) 8" x 8" square for Town Days Block
- Cut (1) 8" x 8" square for Quarters and Dimes Block
- Cut (1) 8" x 8" square for Playground Block
- Cut (1) 8" x 8" square for Thrifty Block
- Cut (1) 6 1/2" x 6 1/2" square for pieced border
- Cut (5) 4 1/2" x 6 1/2" rectangles for pieced border



C14380-Tea Rose Lovely (1/3 Yard)

- Cut (1) 8" x 8" square for Angel Star Block
- Cut (1) 8" x 8" square for Grandma's Quilt Block
- Cut (1) 8" x 8" square for Town Days Block
- Cut (1) 8" x 8" square for Churn Dash Block
- Cut (1) 8" x 8" square for Flower Pot Block
- Cut (1) 8" x 8" square for Patchwork Star Block
- Cut (1) 8" x 8" square for Pine Tree Block
- Cut (5) 4 1/2" x 6 1/2" rectangles for pieced border



C14381-Multi Heritage (1/3 Yard)

- Cut (1) 8" x 8" square for Birthday Cake Block
- Cut (1) 8" x 8" square for Grandma's Quilt Block
- Cut (1) 8" x 8" square for Shopping Basket Block
- Cut (1) 8" x 8" square for Chickadee Block
- Cut (1) 8" x 8" square for Memorial Day Block
- Cut (1) 8" x 8" square for Patchwork Star Block
- Cut (1) 8" x 8" square for Pine Tree Block

- Cut (1) 6 1/2" x 6 1/2" square for pieced border
- Cut (5) 4 1/2" x 6 1/2" rectangles for pieced border



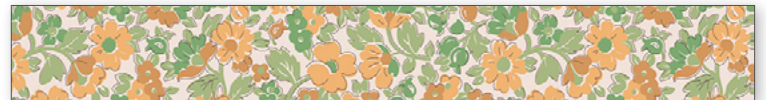
C14382-Multi Charming (1/3 Yard)

- Cut (1) 8" x 8" square for Angel Star Block
- Cut (1) 8" x 8" square for Grandma's Quilt Block
- Cut (1) 8" x 8" square for Duck and Ducklings Block
- Cut (1) 8" x 8" square for Soda Pop Star Block
- Cut (1) 8" x 8" square for Churn Dash Block
- Cut (1) 8" x 8" square for Sweet Dreams
- Cut (1) 8" x 8" square for Memorial Day Block
- Cut (1) 8" x 8" square for Quarters and Dimes Block
- Cut (1) 8" x 8" square for Thrifty Block
- Cut (1) 6 1/2" x 6 1/2" square for pieced border
- Cut (5) 4 1/2" x 6 1/2" rectangles for pieced border



C14383-Cottage Beloved (1/3 Yard)

- Cut (1) 8" x 8" square for Birthday Cake Block
- Cut (1) 8" x 8" square for Puzzle Block
- Cut (1) 8" x 8" square for Soda Pop Star Block
- Cut (1) 8" x 8" square for Nine-Patch Star Block
- Cut (1) 8" x 8" square for Cross Roads Block
- Cut (1) 8" x 8" square for Ladies Aid Block
- Cut (1) 8" x 8" square for Patchwork Star Block
- Cut (9) 4 1/2" x 6 1/2" rectangles for pieced border



C14383-Riley Green Beloved (1/3 Yard)

- Cut (1) 8" x 8" square for Maple Leaf Block
- Cut (1) 8" x 8" square for Spool and Bobbins Block
- Cut (1) 8" x 8" square for Yard Goods Block
- Cut (1) 8" x 8" square for Churn Dash Block
- Cut (1) 8" x 8" square for Flower Pot Block
- Cut (1) 8" x 8" square for Sweet Dreams Block
- Cut (1) 8" x 8" square for Playground Block
- Cut (5) 4 1/2" x 6 1/2" rectangles for pieced border

Mercantile Sampler Sew Along Guide



C14384-Lettuce Legacy (3/8 Yard)

Cut (1) 8" x 8" square for Angel Star Block
Cut (1) 8" x 8" square for Soda Pop Star Block
Cut (1) 8" x 8" square for Nine-Patch Star Block
Cut (1) 8" x 8" square for Town Days Block
Cut (1) 8" x 8" square for Cross Roads Block
Cut (1) 8" x 8" square for Ladies Aid Block
Cut (1) 8" x 8" square for Pine Tree Block
Cut (5) 4 1/2" x 6 1/2" rectangles for pieced border



C14392-Tea Dye Quaint (3/8 Yard)

Cut (1) 8" x 8" square for Birthday Cake Block
Cut (1) 8" x 8" square for Puzzle Block
Cut (1) 8" x 8" square for Shopping Basket Block
Cut (1) 8" x 8" square for Chickadee Block
Cut (1) 8" x 8" square for Churn Dash Block
Cut (1) 8" x 8" square for Sweet Dreams Block
Cut (1) 8" x 8" square for Thrifty Block
Cut (5) 4 1/2" x 6 1/2" rectangles for pieced border



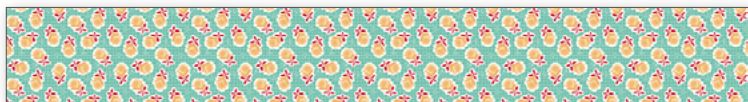
C14384-Marigold Legacy (3/8 Yard)

Cut (1) 8" x 8" square for Birthday Cake Block
Cut (1) 8" x 8" square for Puzzle Block
Cut (1) 8" x 8" square for Peony Block
Cut (1) 8" x 8" square for Chickadee Block
Cut (1) 8" x 8" square for Yard Goods Block
Cut (1) 8" x 8" square for Quarters and Dimes Block
Cut (1) 8" x 8" square for Playground Block
Cut (5) 4 1/2" x 6 1/2" rectangles for pieced border



C14393-Schoolhouse Recollect (3/8 Yard)

Cut (1) 8" x 8" square for Grandma's Quilt Block
Cut (1) 8" x 8" square for Duck and Ducklings Block
Cut (1) 8" x 8" square for Peony Block
Cut (1) 8" x 8" square for Flower Pot Block
Cut (1) 8" x 8" square for Cross Roads Block
Cut (1) 8" x 8" square for Memorial Day Block
Cut (1) 8" x 8" square for Quarters and Dimes Block
Cut (3) 6 1/2" x 4 1/2" rectangles for pieced border
Cut (2) 4 1/2" x 6 1/2" rectangles for pieced border



C14392-Sea Glass Quaint (3/8 Yard)

Cut (1) 8" x 8" square for Maple Leaf Block
Cut (1) 8" x 8" square for Duck and Ducklings Block
Cut (1) 8" x 8" square for Soda Pop Star Block
Cut (1) 8" x 8" square for Nine-Patch Star Block
Cut (1) 8" x 8" square for Yard Goods Block
Cut (1) 8" x 8" square for Flower Pot Block
Cut (1) 8" x 8" square for Ladies Aid Block
Cut (4) 4 1/2" x 6 1/2" rectangles for pieced border



C14393-Alpine Recollect (3/8 Yard)

Cut (1) 8" x 8" square for Angel Star Block
Cut (1) 8" x 8" square for Spool and Bobbins Block
Cut (1) 8" x 8" square for Shopping Basket Block
Cut (1) 8" x 8" square for Chickadee Block
Cut (1) 8" x 8" square for Town Days Block
Cut (1) 8" x 8" square for Ladies Aid Block
Cut (1) 8" x 8" square for Pine Tree Block
Cut (2) 6 1/2" x 4 1/2" rectangles for pieced border
Cut (3) 4 1/2" x 6 1/2" rectangles for pieced border

Mercantile Sampler Sew Along Guide



C14400-Coral Treasure (⅔ Yard)

- Cut (1) 8" × 8" square for Maple Leaf Block
- Cut (1) 8" × 8" square for Duck and Ducklings Block
- Cut (1) 8" × 8" square for Shopping Basket Block
- Cut (1) 8" × 8" square for Nine-Patch Star Block
- Cut (1) 8" × 8" square for Sweet Dreams Block
- Cut (1) 8" × 8" square for Playground Block
- Cut (1) 8" × 8" square for Thrifty Block
- Cut (4) 4 ½" × 6 ½" rectangles for pieced border



C14400-Wedgewood Treasure (⅔ Yard)

- Cut (1) 8" × 8" square for Puzzle Block
- Cut (1) 8" × 8" square for Spool and Bobbins Block
- Cut (1) 8" × 8" square for Peony Block
- Cut (1) 8" × 8" square for Yard Goods Block
- Cut (1) 8" × 8" square for Cross Roads Block
- Cut (1) 8" × 8" square for Memorial Day Block
- Cut (1) 8" × 8" square for Patchwork Star Block
- Cut (1) 6 ½" × 6 ½" square for pieced border
- Cut (5) 4 ½" × 6 ½" rectangles for pieced border



C14398-Riley Red Tenderhearted (¾ Yard)

- Cut (7) 1 ½" × WOF strips. Sew together, then subcut:
 - (2) 1 ½" × 72 ½" inner top/bottom borders
 - (2) 1 ½" × 70 ½" inner side border
- Cut (2) 5 ¼" × 5 ¼" squares (G) for Angel Star Block
- Cut (1) 4" × 4" square (F) for Quarters and Dimes Block
- Cut (4) 3" × 3" squares (F) for Birthday Cake Block
- Cut (1) 3" × 3" square (F) for Shopping Basket Block
- Cut (2) 2 ¾" × 2 ¾" squares (D) for Spool and Bobbins Block
- Cut (8) 2 ¾" × 2 ¾" squares (G) for Thrifty Block
- Cut (1) 2 ½" × 2 ½" square (E) for Sweet Dreams Block
- Cut (4) 2 ¼" × 4" rectangles (E) for Cross Roads Block
- Cut (4) 2 ¼" × 2 ¼" squares (E) for Yard Goods Block
- Cut (5) 2 ¼" × 2 ¼" squares (B) for Playground Block



C14391-Tea Dye Nostalgic (⅔ Yard)

- Cut (9) 2 ½" × WOF strips for binding

- Cut (2) 5" × 5" squares (C) for Spool and Bobbins Block
- Cut (1) 4" × 4" square (F) for Pine Tree Block
- Cut (1) 3 ¾" × 3 ¾" square (K) for Maple Leaf Block



C14405-Denim Sweet Background (1 ¼ Yards)

- Cut (2) 5 ¼" × 5 ¼" squares (A) for Patchwork Star Block
- Cut (4) 4 ¼" × 4 ¼" squares (A) for Chickadee Block
- Cut (6) 3 ¼" × 3 ¼" squares (A) for Grandma's Quilt Block
- Cut (8) 3" × 3" squares (A) for Yard Goods Block
- Cut (8) 3" × 3" squares (A) for Ladies Aid Block
- Cut (8) 3" × 3" squares (A) for Pine Tree Block
- Cut (2) 2 ½" × 13 ½" block borders for Grandma's Quilt Block
- Cut (2) 2 ½" × 13 ½" block borders for Chickadee Block
- Cut (2) 2 ½" × 13 ¼" block borders for Yard Goods Block
- Cut (2) 2 ½" × 13 ¼" block borders for Ladies Aid Block
- Cut (2) 2 ½" × 13 ¼" block borders for Pine Tree Block
- Cut (2) 2 ½" × 9 ½" block borders for Grandma's Quilt Block
- Cut (2) 2 ½" × 9 ½" block borders for Chickadee Block
- Cut (2) 2 ½" × 9 ¼" block borders for Yard Goods Block
- Cut (2) 2 ½" × 9 ¼" block borders for Ladies Aid Block
- Cut (2) 2 ½" × 9 ¼" block borders for Pine Tree Block
- Cut (4) 2 ½" × 4" rectangles (B) for Patchwork Star Block
- Cut (4) 2 ½" × 2 ½" squares (B) for Chickadee Block
- Cut (4) 2 ¼" × 2 ¼" squares (B) for Ladies Aid Block
- Cut (5) 2 ¼" × 2 ¼" squares (B) for Yard Goods Block
- Cut (7) 2 ¼" × 2 ¼" squares (B) for Pine Tree Block
- Cut (2) 2" × 14" block borders for Patchwork Star Block
- Cut (2) 2" × 11" block borders for Patchwork Star Block
- Cut (4) 2" × 2 ½" rectangles (C) for Patchwork Star Block
- Cut (4) 1 ½" × 4 ½" rectangles (C) for Chickadee Block



C14402-Latte Darling Background (1 ¼ Yards)

- Cut (2) 5 ¼" × 5 ¼" squares (A) for Quarters and Dimes Block
- Cut (3) 4 ¾" × 4 ¾" squares (A) for Peony Block
- Cut (3) 4 ½" × 4 ½" squares (A) for Birthday Cake Block
- Cut (4) 3 ¼" × 3 ¼" squares (A) for Sweet Dreams Block
- Cut (4) 3" × 3" squares (B) for Birthday Cake Block
- Cut (2) 3" × 3" squares (B) for Peony Block
- Cut (2) 2 ¾" × 5" rectangles (A) for Spool and Bobbins Block
- Cut (12) 2 ¾" × 2 ¾" squares (A) for Puzzle Block
- Cut (12) 2 ¾" × 2 ¾" squares (B) for Spool and Bobbins Block
- Cut (2) 2 ½" × 13 ½" block borders for Puzzle Block
- Cut (2) 2 ½" × 13 ½" block borders for Spool and Bobbins Block

Mercantile Sampler Sew Along Guide

Cut (2) 2 ½" × 13 ½" block borders for Peony Block
Cut (2) 2 ½" × 13 ¼" block borders for Birthday Cake Block
Cut (2) 2 ½" × 9 ½" block borders for Puzzle Block
Cut (2) 2 ½" × 9 ½" block borders for Spool and Bobbins Block
Cut (2) 2 ½" × 9 ½" block borders for Peony Block
Cut (2) 2 ½" × 9 ¼" block borders for Birthday Cake Block
Cut (12) 2 ½" × 2 ½" squares (B) for Sweet Dreams Block
Cut (1) 2 ¼" × 2 ¼" square (C) Birthday Cake Block
Cut (1) 2 ¼" × 2 ¼" square (D) for Peony Block
Cut (4) 2 ¼" × 2 ¼" squares (B) for Quarters and Dimes Block
Cut (2) 2" × 14" block borders for Quarters and Dimes Block
Cut (2) 2" × 13 ½" block borders for Sweet Dreams Block
Cut (2) 2" × 11" block borders for Quarters and Dimes Block
Cut (2) 2" × 10 ½" block borders for Sweet Dreams Block
Cut (4) 2" × 4" rectangles (C) for Quarters and Dimes Block
Cut (1) 2" × 3 ½" rectangle (C) for Peony Block
Cut (4) 2" × 2 ½" rectangles (D) for Quarters and Dimes Block
Cut (1) 2" × 2" square (E) for Peony Block



C14403-Lettuce Delightful Background (1 ½ Yards)

Cut (1) 5 ½" × 5 ½" square (A) for Shopping Basket Block
Cut (4) 4 ½" × 4 ½" squares (A) for Churn Dash Block
Cut (2) 4" × 4" squares (B) for Flower Pot Block
Cut (5) 3 ¾" × 3 ¾" squares (A) for Maple Leaf Block
Cut (2) 3 ½" × 3 ½" squares (A) for Memorial Day Block
Cut (2) 3 ¼" × 3 ¼" squares (B) for Maple Leaf Block
Cut (2) 3" × 5 ½" rectangles (B) for Shopping Basket Block
Cut (1) 3" × 3" square (C) for Maple Leaf Block
Cut (8) 3" × 3" squares (A) for Town Days Block
Cut (6) 3" × 3" squares (C) for Shopping Basket Block
Cut (6) 3" × 3" squares (A) for Flower Pot Block
Cut (5) 3" × 3" squares (B) for Memorial Day Block
Cut (2) 3" × 13 ½" block borders for Town Days Block
Cut (2) 3" × 8 ½" block borders for Town Days Block
Cut (4) 2 ¾" × 5" rectangles (A) for Thrifty Block
Cut (2) 2 ½" × 13 ½" block borders for Thrifty Block
Cut (2) 2 ½" × 13 ¼" block borders for Ducks and Ducklings Block
Cut (2) 2 ½" × 13 ¼" block borders for Flower Pot Block
Cut (2) 2 ½" × 13 ¼" block borders for Memorial Day Block
Cut (2) 2 ½" × 9 ½" block borders for Thrifty Block
Cut (2) 2 ½" × 9 ¼" block borders for Ducks and Ducklings Block
Cut (2) 2 ½" × 9 ¼" block borders for Flower Pot Block
Cut (2) 2 ½" × 9 ¼" block borders for Memorial Day Block
Cut (4) 2 ½" × 2 ½" squares (B) for Churn Dash Block
Cut (2) 2 ¼" × 5 ¾" rectangles (C) for Flower Pot Block
Cut (8) 2 ¼" × 4" rectangles (A) for Duck and Ducklings Block
Cut (2) 2 ¼" × 4" rectangles (C) for Memorial Day Block

Cut (8) 2 ¼" × 2 ¼" squares (B) for Duck and Ducklings Block
Cut (1) 2 ¼" × 2 ¼" square (D) for Flower Pot Block
Cut (5) 2 ¼" × 2 ¼" squares (D) for Memorial Day Block
Cut (2) 2" × 13 ½" block borders for Shopping Basket Block
Cut (2) 2" × 13 ½" block borders for Churn Dash Block
Cut (2) 2" × 13 ¼" block borders for Maple Leaf Block
Cut (2) 2" × 10 ½" block borders for Shopping Basket Block
Cut (2) 2" × 10 ½" block borders for Churn Dash Block
Cut (2) 2" × 10 ¼" block borders for Maple Leaf Block
Cut (4) 1 ½" × 2 ¾" rectangles (B) for Thrifty Block
Cut (4) 1 ½" × 1 ¾" rectangles (C) for Thrifty Block
Cut (1) 1 ½" × 1 ½" square (G) for Town Days Block



C14404-Coral Reminisce Background (2 ½ Yards)

Cut (4) 2 ½" × LOF* strips; subcut:

(2) 2 ½" × 88 ½" for outer top/bottom borders

(2) 2 ½" × 84 ½" for outer side borders

Cut (2) 5 ¼" × 5 ¼" squares (A) for Angel Star Block
Cut (2) 3" × 3" squares (C) for Angel Star Block
Cut (4) 3" × 3" squares (A) for Cross Roads Block
Cut (12) 2 ¾" × 2 ¾" squares (A) for Soda Pop Star Block
Cut (2) 2 ½" × 13 ½" block borders for Soda Pop Star Block
Cut (2) 2 ½" × 13 ¼" block borders for Nine-Patch Star Block
Cut (2) 2 ½" × 13 ¼" block borders for Cross Roads Block
Cut (2) 2 ½" × 13 ¼" block borders for Playground Block
Cut (2) 2 ½" × 9 ½" block borders for Soda Pop Star Block
Cut (2) 2 ½" × 9 ¼" block borders for Nine-Patch Star Block
Cut (2) 2 ½" × 9 ¼" block borders for Cross Roads Block
Cut (2) 2 ½" × 9 ¼" block borders for Playground Block
Cut (152) 2 ½" × 2 ½" squares for pieced border
Cut (4) 2 ¼" × 4" rectangles (B) for Angel Star Block
Cut (4) 2 ¼" × 2 ¼" squares (D) for Angel Star Block
Cut (12) 2 ¼" × 2 ¼" squares (A) for Nine-Patch Star Block
Cut (4) 2 ¼" × 2 ¼" squares (B) for Cross Roads Block
Cut (12) 2 ¼" × 2 ¼" squares (A) for Playground Block
Cut (2) 2" × 14" block borders for Angel Star Block
Cut (2) 2" × 11" block border for Angel Star Block

*These strips are cut LOF, not WOF.

Mercantile Sampler Sew Along Guide



Sewing Blocks Together and Adding Borders: The center of this quilt is arranged in (5) rows of (5) blocks. Sew the blocks together to form the rows, then press. Sew the rows together to form the quilt center. The quilt center should measure 70 ½" x 70 ½".

Sewing the Borders Together: On the following page you will see a quilt layout diagram and some helpful measurements. The measurements given are the UNFINISHED SIZE of each section shown.

Place (1) 2 ½" Coral Reminisce Background square RST on (1) pieced border rectangle or (1) pieced border square. Match the raw edges of both pieces in the corner to be replaced. Use Lori's Seams Sew Easy™ Seam Guide to sew a diagonal line from corner to corner on the smaller square. Trim the seam allowance above the sewn line to ¼". Flip the small piece away from the bottom piece and press, replacing the corner. Replace both top corners of the rectangles; replace the top right corner and bottom left corner of the larger squares. The size of the larger, original piece does not change.

Select (18) rectangular SNF pieced border units and sew them in a row. Note the fabric placement on the next page to match the sample quilt, if desired. Add a square SNF unit to both ends of (2) rows to create the Top/Bottom Pieced Borders.

Add the Inner Side Borders, then the Inner Top/Bottom Borders. Add the Pieced Side Borders, then the Pieced Top/Bottom Borders. Add the Outer Top/Bottom Borders, then the Outer Side Borders.

Finish your quilt by layering the quilt top, batting, and backing. Baste quilt layers together and quilt as desired. Sew the Tea Dye Nostalgia binding strips together end-to-end. Then bind the trimmed, finished quilt using your favorite binding method.

Enjoy your Mercantile Sampler Quilt!!

Mercantile Sampler Sew Along Guide



Mercantile Notes



A series of horizontal lines for writing notes, starting from the top right and extending down the page. The lines are evenly spaced and cover most of the page area.

