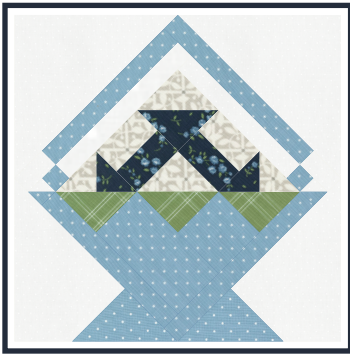


2024 Pieceful Baskets Quilt Along



Fabric Requirements

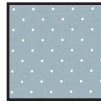
The fabrics in the original Pieceful Baskets quilt are from Shoreline by Camille Roskelley. These fabric requirements are shown below with the fabric SKU from Shoreline in Fat Quarter Shop's quilt.

BLOCKS

4 $\frac{1}{8}$ yards Background 55307-21



$\frac{7}{8}$ yard Basket Prints 55307-12



55304-23



55303-12



55300-23



$\frac{7}{8}$ yard Block Accent & Sashing 55302-15



Fat Quarter Block Backgrounds 55303-16



55308-11



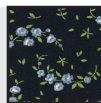
55302-21



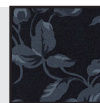
55307-11



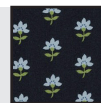
Fat Quarter Block Prints 55308-14



55300-24



55301-14

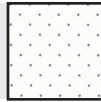


55304-24



FINISHING

1 $\frac{3}{4}$ yards Sashing 55307-11



$\frac{5}{8}$ yard Sashing 55301-13



$\frac{7}{8}$ yard Binding 55302-14



5 $\frac{3}{8}$ yards Backing 55306-11



2024 Pieceful Baskets Quilt Along



JELLY & JAM Fabric Conversion

The fabrics in the original Pieceful Baskets quilt are from Shoreline by Camille Roskelley. The first SKU listed is the original fabric SKU from Shoreline.

Fabrics shown in this version are from Jelly & Jam by Fig Tree Quilts for Moda Fabrics. The second fabric SKU is the corresponding suggested fabric SKU from this collection.

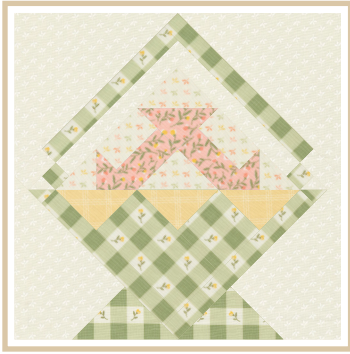
BLOCKS

4 1/8 yards	Background	55307-21 20488-11							
2/3 yard	Basket Prints	55307-12 20498-19		55304-23 20495-20		55303-12 20497-19		55300-23 20498-20	
2/3 yard	Block Accent & Sashing	55302-15 20490-16							
Fat Quarter	Block Backgrounds	55303-16 20498-31		55308-11 20498-11		55302-21 20498-32		55307-11 20495-19	
Fat Quarter	Block Prints	55308-14 20490-14		55300-24 20494-14		55301-14 20497-14		55304-24 20498-14	

FINISHING

1 3/4 yards	Sashing	55307-11 20495-19						
5/8 yard	Sashing	55301-13 20488-68						
7/8 yard	Binding	55302-14 20498-20						
5 3/8 yards	Backing	55306-11 20490-11						

2024 Pieceful Baskets Quilt Along



FLOWER GIRL Fabric Conversion

The fabrics in the original Pieceful Baskets quilt are from Shoreline by Camille Roskelley. The first SKU listed is the original fabric SKU from Shoreline.

Fabrics shown in this version are from Flower Girl by My Sew Quilty Life for Moda Fabrics. The second fabric SKU is the corresponding suggested fabric SKU from this collection.

BLOCKS

4 1/8 yards	Background	55307-21 31736-21							
2/3 yard	Basket Prints	55307-12 31730-18		55304-23 31733-19		55303-12 31732-18		55300-23 31736-18	
2/3 yard	Block Accent & Sashing	55302-15 31737-14							
Fat Quarter	Block Backgrounds	55303-16 31732-11		55308-11 31736-11		55302-21 31734-11		55307-11 31730-11	
Fat Quarter	Block Prints	55308-14 31736-16		55300-24 31731-16		55301-14 31731-17		55304-24 31732-16	

FINISHING

1 3/4 yards	Sashing	55307-11 31732-11					
5/8 yard	Sashing	55301-13 31736-19					
7/8 yard	Binding	55302-14 31737-19					
5 3/8 yards	Backing	55306-11 31734-16					

2024 Pieceful Baskets Quilt Along



LYDIA'S LACE Fabric Conversion

The fabrics in the original Pieceful Baskets quilt are from Shoreline by Camille Roskelley. The first SKU listed is the original fabric SKU from Shoreline.

Fabrics shown in this version are from Lydia's Lace by Betsy Chutchian for Moda Fabrics. The second fabric SKU is the corresponding suggested fabric SKU from this collection.

BLOCKS

4 1/8 yards Background 55307-21
9900-12



2/3 yard Basket Prints 55307-12
31684-17



55304-23
31685-18



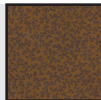
55303-12
31683-16



55300-23
31680-15



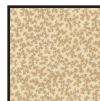
2/3 yard Block Accent
& Sashing 55302-15
31689-14



Fat Quarter Block Backgrounds 55303-16
31686-12



55308-11
31689-15



55302-21
31690-11



55307-11
31681-17



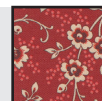
Fat Quarter Block Prints 55308-14
31685-14



55300-24
31687-15



55301-14
31683-15



55304-24
31680-14

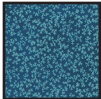


FINISHING

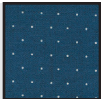
1 3/4 yards Sashing 55307-11
31681-17



5/8 yard Sashing 55301-13
31689-13



7/8 yard Binding 55302-14
31690-15



5 3/8 yards Backing 55306-11
31681-14



2024 Pieceful Baskets Quilt Along





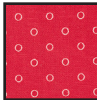



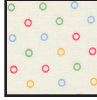
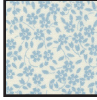
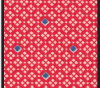




30S PLAYTIME Fabric Conversion

The fabrics in the original Pieceful Baskets quilt are from Shoreline by Camille Roskelley. The first SKU listed is the original fabric SKU from Shoreline.

Fabrics shown in this version are from 30s Playtime by Linzee McCray for Moda Fabrics. The second fabric SKU is the corresponding suggested fabric SKU from this collection.

BLOCKS

4 1/8 yards	Background	55307-21 33758-31							
2/3 yard	Basket Prints	55307-12 33753-22		55304-23 33752-13		55303-12 33755-16		55300-23 33758-14	
2/3 yard	Block Accent & Sashing	55302-15 33757-19							
Fat Quarter	Block Backgrounds	55303-16 33755-11		55308-11 33756-11		55302-21 33758-11		55307-11 33756-32	
Fat Quarter	Block Prints	55308-14 33757-14		55300-24 33755-12		55301-14 33758-19		55304-24 33755-17	

FINISHING

1 3/4 yards	Sashing	55307-11 33756-32						
5/8 yard	Sashing	55301-13 33752-14						
7/8 yard	Binding	55302-14 33758-21						
5 3/8 yards	Backing	55306-11 33750-31						

2024 Pieceful Baskets Quilt Along



SHIMMER Fabric Conversion

The fabrics in the original Pieceful Baskets quilt are from Shoreline by Camille Roskelley. The first SKU listed is the original fabric SKU from Shoreline.

Fabrics shown in this version are from Shimmer by Zen Chic for Moda Fabrics. The second fabric SKU is the corresponding suggested fabric SKU from this collection.

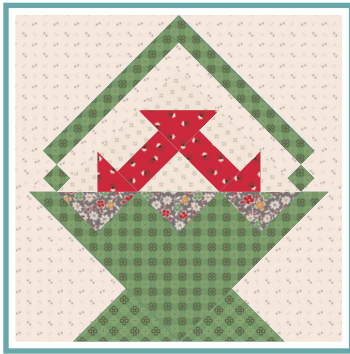
BLOCKS

4 1/8 yards	Background	55307-21 1843-12							
2/3 yard	Basket Prints	55307-12 1845-14M		55304-23 1844-14M		55303-12 1844-13M		55300-23 1842-14M	
2/3 yard	Block Accent & Sashing	55302-15 1846-15M							
Fat Quarter	Block Backgrounds	55303-16 1846-11M		55308-11 1842-11M		55302-21 1845-11M		55307-11 1844-11M	
Fat Quarter	Block Prints	55308-14 1841-15M		55300-24 1840-15M		55301-14 1843-16		55304-24 1844-15M	

FINISHING

1 3/4 yards	Sashing	55307-11 1844-11M							
5/8 yard	Sashing	55301-13 1843-14							
7/8 yard	Binding	55302-14 1845-16M							
5 3/8 yards	Backing	55306-11 1840-13M							

2024 Pieceful Baskets Quilt Along




AUTUMN Fabric Conversion


The fabrics in the original Pieceful Baskets quilt are from Shoreline by Camille Roskelley. The first SKU listed is the original fabric SKU from Shoreline.

Fabrics shown in this version are from Autumn by Lori Holt for Riley Blake Designs. The second fabric SKU is the corresponding suggested fabric SKU from this collection.



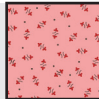
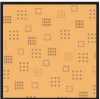
BLOCKS

4 1/8 yards	Background	55307-21 C14669-LATTE	
-------------	------------	--------------------------	---


2/3 yard	Basket Prints	55307-12 C14668-BASIL		55304-23 C14661-RAINDROP		55303-12 C14666-TAFFY		55300-23 C14657-DENIM	
----------	---------------	--------------------------	---	-----------------------------	---	--------------------------	---	--------------------------	---

2/3 yard	Block Accent & Sashing	55302-15 C14659-MILKCAN	
----------	------------------------	----------------------------	--


Fat Quarter	Block Backgrounds	55303-16 C14658-LATTE		55308-11 C14663-LATTE		55302-21 C14652-LATTE		55307-11 C14667-LATTE	
-------------	-------------------	--------------------------	---	--------------------------	---	--------------------------	---	--------------------------	---

Fat Quarter	Block Prints	55308-14 C14654-RILEYRED		55300-24 C14667-PUMPKIN		55301-14 C14655-CORAL		55304-24 C14653-MARIGOLD	
-------------	--------------	-----------------------------	---	----------------------------	---	--------------------------	---	-----------------------------	---

FINISHING

1 3/4 yards	Sashing	55307-11 C14667-LATTE	
-------------	---------	--------------------------	---

5/8 yard	Sashing	55301-13 C14658-DENIM	
----------	---------	--------------------------	---

7/8 yard	Binding	55302-14 C14663-RAISIN	
----------	---------	---------------------------	---

5 3/8 yards	Backing	55306-11 C14650-LATTE	
-------------	---------	--------------------------	---