

# PATCHY PANEL QUILT



51" x 71"

**PUMPKIN**  
**Patch**  
J. WECKER FRISCH®



04/01/2024

# PATCHY PANEL QUILT

## FINISHED QUILT SIZE 51" x 71"

Please read all instructions before beginning this project.  
Yardage calculated using a 42" usable width of fabric.

## GENERAL INSTRUCTIONS

Please check [www.rileyblakedesigns.com/pattern-updates](http://www.rileyblakedesigns.com/pattern-updates) for any revisions before starting this project. This pattern requires a basic knowledge of quilting techniques and terminology. The quilt and block diagrams portrayed are virtual images. The layout and look of your project may differ when using actual fabric.

Please note that prewashing can shrink 100% cotton fabric. Always verify after washing and drying that there is still 42" of usable width available. Shrinkage can affect the size of panel motifs and fussy cutting sizes may need to be adjusted. If this is the case, add strips around the edge of the fussy cut piece to create a pieced unit that matches the size of the fussy cut dimensions given in the cutting instructions.

Measurements include ¼" seam allowance. Sew with RST unless stated otherwise. Refer to the quilt layout diagram for placement of the prints. Press seams as noted in each step for best results. Dimensions listed in steps are unfinished sizes unless stated otherwise.

WOF = Width of Fabric

RST = Right Sides Together

## FABRIC REQUIREMENTS

All fabrics are from the Pumpkin Patch fabric collection unless stated otherwise.

(1) PD14570-PANEL Pumpkin Poster Main Panel

(2) 5-14570-42 5-Inch Stackers

(1) 2 ½" Strip Each:

C14574-ORANGE Gingham

C14575-ORANGE Pumpkin Toss

C14577-ORANGE Raise the Rooftop

C14578-ORANGE Terrifying Ticking

C14581-ORANGE Silver Lining Stripe

C14582-ORANGE Inside Cover

C14583-ORANGE Veggies Vengeance

1 ¼ yards C120-RILEYWHITE Confetti Cottons Solid  
(includes outer border)

¾ yard C120-RILEYBLACK Confetti Cottons Solid  
(includes binding)

## OTHER SUPPLIES

Basic Sewing Supplies

1 ¾ yards Wide Back backing fabric of your choice  
(suggested WB13870-WHITE Sew Text)

Batting

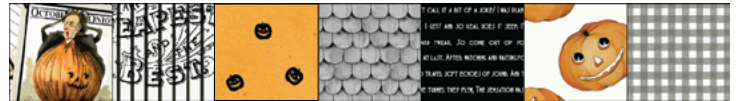
## CUTTING INSTRUCTIONS

When cutting fabrics, use a straight edge ruler and rotary cutter. Measurements include ¼" seam allowance. Label, allocate, and organize all cuts as noted. Letter labels are included for each cut.



Pumpkin Poster Main Panel

Cut (1) 23" x 43" panel, centered over the motif as shown.



## 5-Inch Stackers

Select (26) 5" black print squares:

Label (23) squares A.

Trim (3) squares to 3 ¾" x 5" rectangles. Label as B.



Select (2) 5" White Silver Lining squares.

Label (1) square as A.

Trim (1) square to 3 ¾" x 5" rectangle. Label as B.

Select (19) 5" white print squares\*. Cut each square into  
(2) 2 ½" x 5" rectangles:

Label (31) rectangles C.

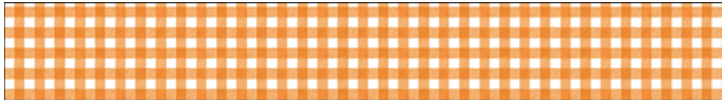
Trim (4) rectangles to 2 ½" x 4 ½". Label as D.

Trim (3) rectangles to 2 ½" x 3 ½". Label as E.

\* You may choose to select more squares for greater variety.



# PATCHY PANEL QUILT



**Orange Gingham**

Cut (2)  $2\frac{1}{2}" \times 13\frac{3}{8}"$  rectangles. Label as F.



**Orange Pumpkin Toss**

Cut (1)  $2\frac{1}{2}" \times 13\frac{3}{8}"$  rectangle. Label as F.

Cut (1)  $2\frac{1}{2}" \times 12\frac{1}{2}"$  rectangle. Label as G.



**Orange Raise the Rooftop**

Cut (1)  $2\frac{1}{2}" \times 13\frac{3}{8}"$  rectangle. Label as F.

Cut (1)  $2\frac{1}{2}" \times 12\frac{1}{2}"$  rectangle. Label as H.



**Orange Terrifying Ticking**

Cut (1)  $2\frac{1}{2}" \times 12\frac{1}{2}"$  rectangle. Label as H.



**Orange Silver Lining**

Cut (1)  $2\frac{1}{2}" \times 13\frac{3}{8}"$  rectangle. Label as F.

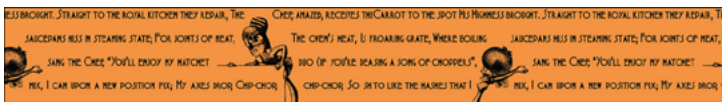
Cut (1)  $2\frac{1}{2}" \times 12\frac{1}{2}"$  rectangle. Label as G.



**Orange Inside Cover**

Cut (1)  $2\frac{1}{2}" \times 13\frac{3}{8}"$  rectangle. Label as F.

Cut (1)  $2\frac{1}{2}" \times 12\frac{1}{2}"$  rectangle. Label as G.



**Orange Veggies Vengeance**

Cut (2)  $2\frac{1}{2}" \times 13\frac{3}{8}"$  rectangles. Label as F.

Cut (1)  $2\frac{1}{2}" \times 12\frac{1}{2}"$  rectangle. Label as G.

**Riley White Confetti Cottons Solid**

Cut (6)  $6" \times$  WOF strips. Piece together end-to-end; subcut:

(2)  $6" \times 60"$  strips. Set aside for the Outer Side Borders.

(2)  $6" \times 51"$  strips. Set aside for the Outer Top/Bottom Borders.

Cut (1)  $2\frac{1}{2}" \times$  WOF strip; subcut:

(5)  $2\frac{1}{2}" \times 5"$  rectangles. Label as C.

(1)  $2\frac{1}{2}" \times 3\frac{1}{2}"$  rectangle. Label as E.

**Riley Black Confetti Cottons Solid**

Cut (1)  $5" \times$  WOF strip; subcut:

(6)  $5" \times 5"$  squares. Label as A.

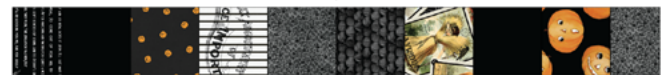
Cut (7)  $2\frac{1}{2}" \times$  WOF strips. Set aside for binding.

## PIECED BORDER ASSEMBLY

Refer to the quilt layout diagram on Page 5 for layout of pieced border squares and rectangles. Be sure to place different fabric print patterns side-by-side.

### Inner Pieced Borders

1. Arrange and sew (8) **A**-squares and (2) **B**-rectangles as shown. Make (2) Inner Pieced Side Borders that measure  $5" \times 43"$ .



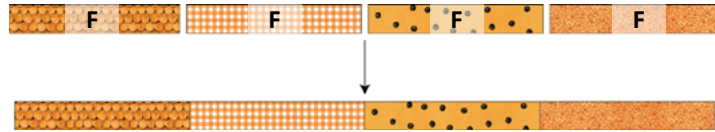
2. Arrange and sew (7) **A**-squares as shown. Make (2) Inner Pieced Top/Bottom Borders that measure  $5" \times 32"$ .



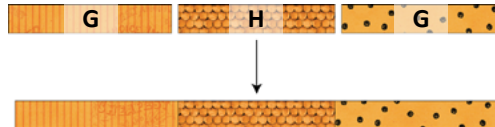
# PATCHY PANEL QUILT

## Middle Pieced Borders

3. Arrange and sew (4) **F**-rectangles as shown. Make (2) Middle Pieced Side Borders that measure  $2\frac{1}{2}" \times 52"$ .



4. Arrange and sew (2) **G**-rectangles and (1) **H**-rectangle as shown. Make (2) Middle Pieced Top/Bottom Borders that measure  $2\frac{1}{2}" \times 36"$ .

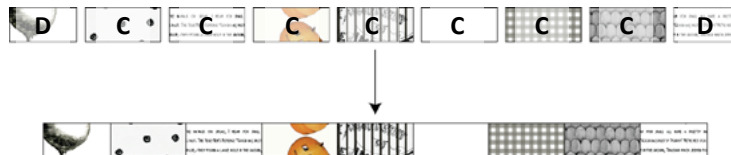


## Outer Pieced Borders

5. Arrange and sew (11) **C**-rectangles and (2) **E**-rectangles as shown. Make (2) Outer Pieced Side Borders that measure  $2\frac{1}{2}" \times 56"$ .



6. Arrange and sew (7) **C**-rectangles and (2) **D**-rectangles as shown. Make (2) Middle Pieced Top/Bottom Borders that measure  $2\frac{1}{2}" \times 40"$ .



## QUILT ASSEMBLY

- Sew the Inner Pieced Side Borders to each side of the panel, followed by the Inner Pieced Top/Bottom Borders to the top and bottom.
- Add the Middle Pieced Side Borders to each side of the panel, followed by the Middle Pieced Top/Bottom Borders to the top and bottom.
- Sew the Outer Pieced Side Borders to each side of the panel, followed by the Outer Pieced Top/Bottom Borders to the top and bottom. The quilt center is complete and should measure  $40" \times 60"$ .

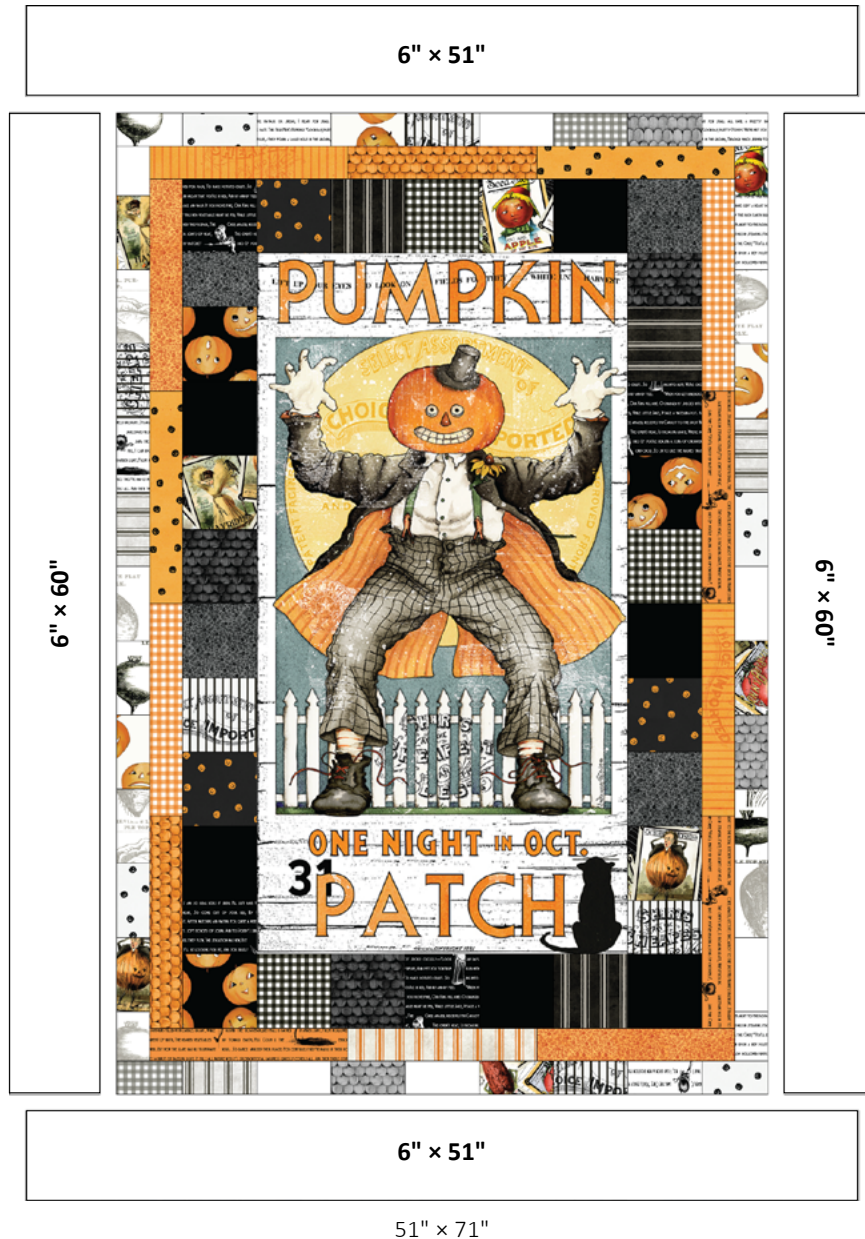




## PATCHY PANEL QUILT

10. Add the Outer Side Borders to each side, followed by the Outer Top/Bottom Borders to the top and bottom. The quilt top is now complete and should measure 51" x 71".
11. Layer your backing, batting, and quilt top. Baste and quilt as desired.

### QUILT LAYOUT DIAGRAM



### FINISHING INSTRUCTIONS

12. Sew the Black Confetti Cotton binding strips together end-to-end. Bind the trimmed, finished quilt using your favorite binding method.

Enjoy and share your quilt using the hashtags: [#pumpkinpatchfabric](#), [#patchypanelquilt](#), [#rileyblakedesigns](#), and [#iloverileyblake](#).