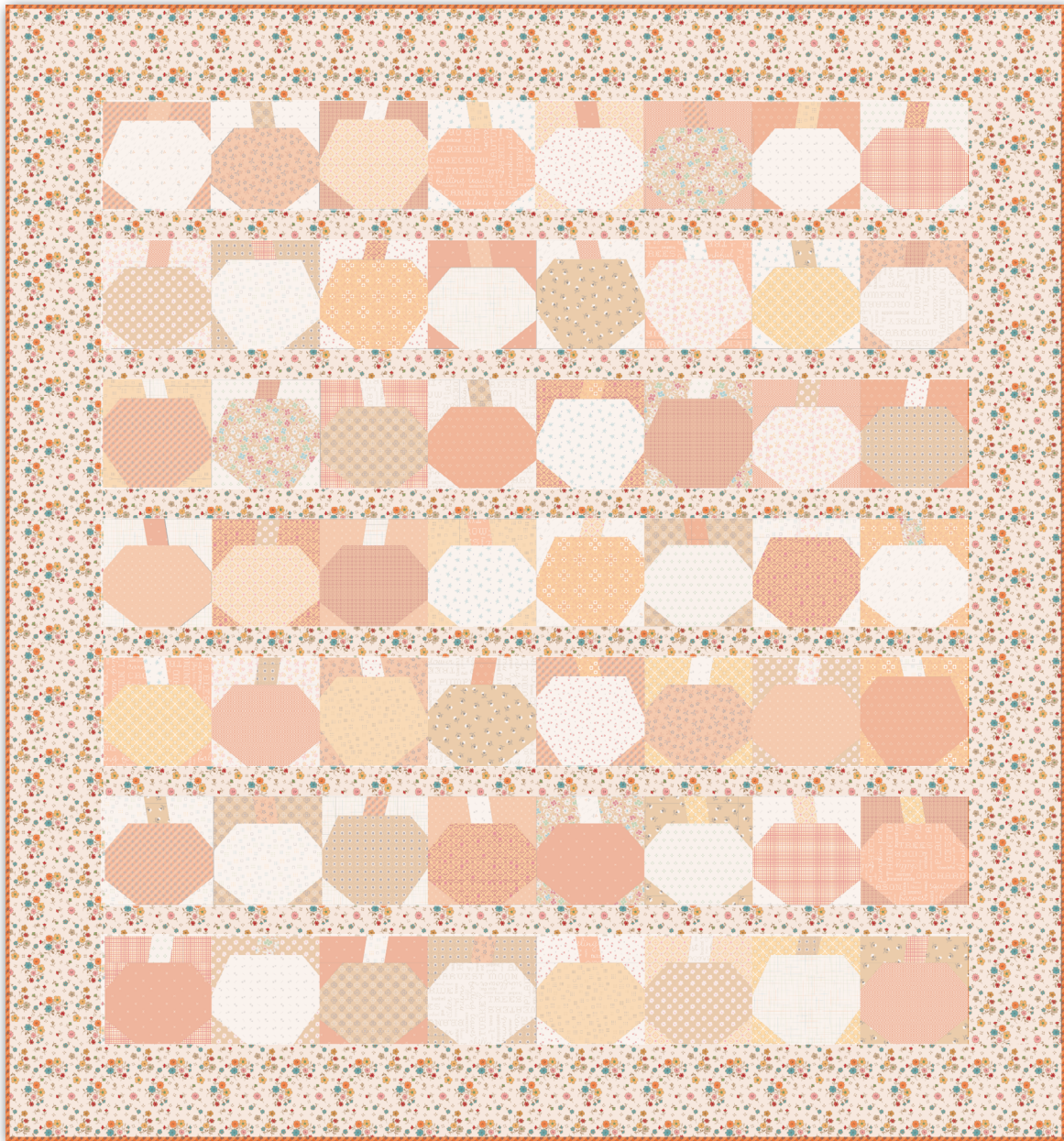


PUMPKIN PAPER TONAL QUILT



68" x 73"



PUMPKIN PAPER TONAL QUILT

Designed by Lori Holt of Bee in my Bonnet

FINISHED QUILT SIZE 68" × 73"

Measurements include ¼" seam allowance.

Sew with right sides together unless otherwise stated.

GENERAL INSTRUCTIONS

Please check our website www.rileyblakedesigns.com/pattern-updates for any revisions before starting this project. This pattern requires a basic knowledge of quilting techniques and terminology. The quilt and block diagrams portrayed are virtual images. The layout and look of your project may differ when using actual fabric. Yardage calculated using a 42" usable width of fabric.

WOF = Width of Fabric

LOF = Length of Fabric

RST = Right Sides Together

FABRIC REQUIREMENTS

All fabrics are from the Autumn collection unless otherwise indicated.

- (1) 10" × 20" C14658-Autumn Stitch
- (1) 10" × 20" C14659-Cider Cosmos
- (1) 10" × 20" C14652-Latte Berries
- (1) 10" × 20" C14653-Latte Squares
- (1) 10" × 20" C14653-Marigold Squares
- (1) 10" × 20" C14654-Cider Blossom
- (1) 10" × 20" C14655-Latte Posy
- (1) 10" × 20" C14658-Latte Stitch
- (1) 10" × 20" C14660-Pumpkin Gingham
- (1) 10" × 20" C14664-Yam Perennial
- (1) 10" × 20" C14666-Cider Sunflowers
- (1) 10" × 20" C14667-Pumpkin Words
- (1) 10" × 20" C14668-Cider Kerchief
- (1) 10" × 20" C14663-Latte Sprigs
- (1) 10" × 20" C14664-Latte Perennial
- (1) 10" × 20" C14667-Latte Words
- (1) 10" × 20" C14669-Latte Maple
- (1) 10" × 20" C14670-Latte Gunny Sack
- (1) 10" × 20" C14164-Terracotta Bee Dots Elvira
- (1) 10" × 20" C14165-Cider Bee Dots Verona
- (1) 10" × 20" C14168-Yam Bee Dots Thelma
- (1) 10" × 20" C14179-Marigold Bee Dots Frances
- (1) 10" × 20" C12024-Autumn Bee Plaids Zinnia
- (1) 10" × 20" C12025-Autumn Bee Plaids Harvest

- (1) 10" × 20" C12026-Autumn Bee Plaids October
- (1) 10" × 20" C12029-Mac 'n Cheese Bee Plaids Homemade
- (1) 10" × 20" C12035-Daisy Bee Plaids Sunflower
- (1) 10" × 20" C745-Autumn Bee Cross Stitch
- 2 yards C14650-Latte Floral
- ⅝ yard Gingham C14660-Pumpkin for binding

OTHER SUPPLIES

Basic Sewing Supplies

(2) packages 10" Pumpkin Quilt Paper ST-35009

Lori Holt Cute Cuts™ Trim-it™ 7 ½" Ruler STTI-21863
(recommended)

2 ⅝ yards WB9709-Green Prim WIDEBACK for backing
(suggested)

CUTTING INSTRUCTIONS

Batting (76" × 81")

Please read all pattern instructions before cutting fabrics. Refer to the quilt photo for the placement of each of the fabrics. Use a straight edge ruler and rotary cutter to cut your fabrics.



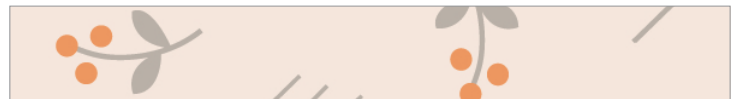
Autumn Stitch

Cut (2) 10" × 10" squares.



Cider Cosmos

Cut (2) 10" × 10" squares.



Latte Berries

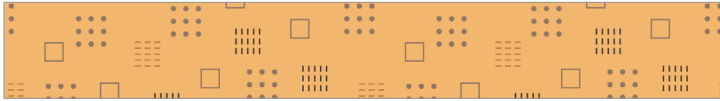
Cut (2) 10" × 10" squares.



Latte Squares

Cut (2) 10" × 10" squares.

PUMPKIN PAPER TONAL QUILT



Marigold Squares

Cut (2) 10" × 10" squares.



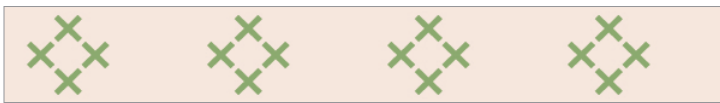
Cider Blossom

Cut (2) 10" × 10" squares.



Latte Posy

Cut (2) 10" × 10" squares.



Latte Stitch

Cut (2) 10" × 10" squares.



Pumpkin Gingham

Cut (2) 10" × 10" squares.



Yam Perennial

Cut (2) 10" × 10" squares.



Cider Sunflowers

Cut (2) 10" × 10" squares.



Pumpkin Words

Cut (2) 10" × 10" squares.



Cider Kerchief

Cut (2) 10" × 10" squares.



Latte Sprigs

Cut (2) 10" × 10" squares.



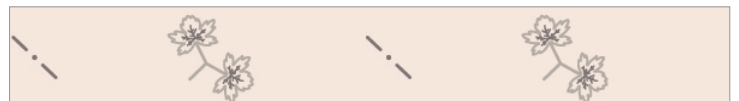
Latte Perennial

Cut (2) 10" × 10" squares.



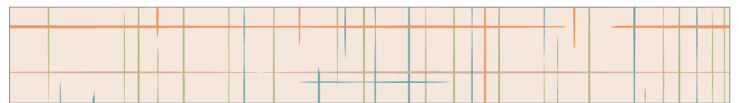
Latte Words

Cut (2) 10" × 10" squares.



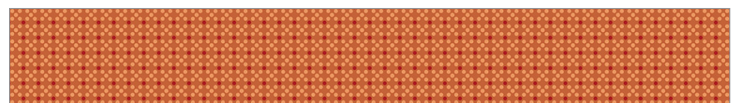
Latte Maple

Cut (2) 10" × 10" squares.



Latte Gunny Sack

Cut (2) 10" × 10" squares.



Terracotta Bee Dots Elvira

Cut (2) 10" × 10" squares.



Cider Bee Dots Verona

Cut (2) 10" × 10" squares.

PUMPKIN PAPER TONAL QUILT



Yam Bee Dots Thelma

Cut (2) 10" × 10" squares.



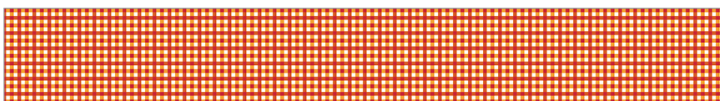
Marigold Bee Dots Frances

Cut (2) 10" × 10" squares.



Autumn Bee Plaids Zinnia

Cut (2) 10" × 10" squares.



Autumn Bee Plaids Harvest

Cut (2) 10" × 10" squares.



Autumn Bee Plaids October

Cut (2) 10" × 10" squares.



Mac 'n Cheese Bee Plaids Homemade

Cut (2) 10" × 10" squares.



Daisy Bee Plaids Sunflower

Cut (2) 10" × 10" squares.



Autumn Bee Cross Stitch

Cut (2) 10" × 10" squares.



Latte Floral

Cut (4) 6 ½" × LOF strips; subcut:

(2) 6 ½" × 61 ½" side border strips.

(2) 6 ½" × 68 ½" top/bottom border strips.

Cut (6) 2 ½" × LOF strips; subcut:

(6) 2 ½" × 56 ½" sashing strips.



Pumpkin Gingham

Cut (8) 2 ½" × WOF strips for binding.

BLOCK ASSEMBLY

SEWING INSTRUCTIONS

Follow the instructions included in the Pumpkin Quilt Paper packages to make (56) blocks. Refer to the quilt photo for the fabric combinations and placement of the prints.

Your blocks should measure 7 ½" × 7 ½" unfinished.

QUILT ASSEMBLY

LAYOUT INSTRUCTIONS

1. Arrange the blocks in (7) rows of (8) blocks.
2. Sew the blocks together to form rows. Press.
3. Place a sashing strip between each of the rows, then sew the rows and sashing strips together. Press.
4. Attach the side borders to the left and right edges of the quilt top. Press toward the borders.
5. Attach the top and bottom borders to the top and bottom edges of the quilt top. Press toward the borders.

Your quilt top should measure 68 ½" × 73 ½" unfinished.

FINISHING INSTRUCTIONS

FINISHING INSTRUCTIONS

Finish quilt by layering the quilt top, batting, and backing. Baste quilt layers together and quilt as desired. Bind with the Gingham Pumpkin binding strips.

Enjoy and share your quilt using the hashtags [#autumnfabric](#), [#pumpkinpaperquilt](#), [#rileyblakedesigns](#) and [#iloverileyblake](#).

PUMPKIN PAPER TONAL QUILT

QUILT LAYOUT DIAGRAM

6 ½" x 68 ½"

6 ½" x 61 ½"

6 ½" x 61 ½"

6 ½" x 68 ½"