

PUMPKIN PAPER SCRAPPY QUILT



68" x 73"



= Beginner



4/1/24

PUMPKIN PAPER SCRAPPY QUILT

Designed by Lori Holt of Bee in my Bonnett
FINISHED QUILT SIZE 68" x 73"

Measurements include ¼" seam allowance.

Sew with right sides together unless otherwise stated.

GENERAL INSTRUCTIONS

Please check our website www.rileyblakedesigns.com/pattern-updates for any revisions before starting this project. This pattern requires a basic knowledge of quilting techniques and terminology. The quilt and block diagrams portrayed are virtual images. The layout and look of your project may differ when using actual fabric. Yardage calculated using a 42" usable width of fabric.

WOF = Width of Fabric

LOF = Length of Fabric

RST = Right Sides Together

FABRIC REQUIREMENTS

All fabrics are from the Autumn collection unless otherwise indicated.

(1) Autumn 10-inch Stacker 10-14650-42

(1) 10" x 20" C14652-LATTE Berries

(1) 10" x 20" C14653-LATTE Squares

(1) 10" x 20" C14655-LATTE Posy

(1) 10" x 20" C14658-LATTE Stitch

(1) 10" x 20" C14663-LATTE Sprig

(1) 10" x 20" C14664-LATTE Perennial

(1) 10" x 20" C14667-LATTE Words

(1) 10" x 20" C14668-LATTE Kerchief

(1) 10" x 20" C14669-LATTE Maple

(1) 10" x 20" C14670-LATTE Gunny Sack

2 yards C14661-BROWN Sugar Homespun

⅝ yard C14660-PUMPKIN Gingham for binding

OTHER SUPPLIES

Basic Sewing Supplies

(2) packages 10" Pumpkin Quilt Paper ST-35009

Lori Holt Cute Cuts™ Trim-it™ 7 ½" Ruler STTI-21863

(recommended)

2 ½ yards WB14673-RAINDROP Floral Wide Back for backing

Batting (76" x 81")

CUTTING INSTRUCTIONS

Please read all pattern instructions before cutting fabrics. Refer to the quilt photo for the placement of each of the fabrics. Use a straight edge ruler and rotary cutter to cut your fabrics.



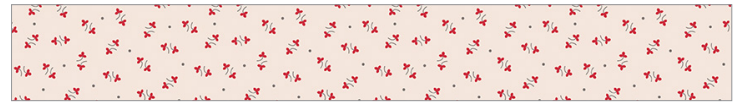
Latte Berries

Cut (2) 10" x 10" squares.



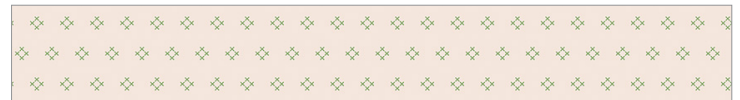
Latte Squares

Cut (2) 10" x 10" squares.



Latte Posy

Cut (2) 10" x 10" squares.



Latte Stitch

Cut (2) 10" x 10" squares.



Latte Sprig

Cut (2) 10" x 10" squares.



Latte Perennial

Cut (2) 10" x 10" squares.



Latte Words

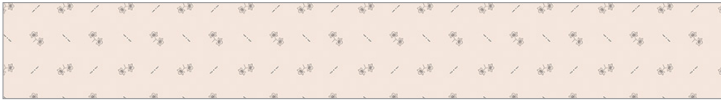
Cut (2) 10" x 10" squares.

PUMPKIN PAPER SCRAPPY QUILT



Latte Kerchief

Cut (2) 10" × 10" squares.



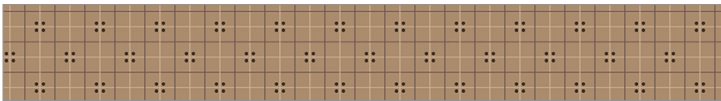
Latte Maple

Cut (2) 10" × 10" squares.



Latte Gunny Sack

Cut (2) 10" × 10" squares.



Brown Sugar Homespun

Cut (4) 6 ½" × LOF strips; subcut:

(2) 6 ½" × 61 ½" side border strips.

(2) 6 ½" × 68 ½" top/bottom border strips.

Cut (6) 2 ½" × LOF strips; subcut:

(6) 2 ½" × 56 ½" sashing strips.



Pumpkin Gingham

Cut (8) 2 ½" × WOF strips for binding.

BLOCK ASSEMBLY

Follow the instructions included in the Pumpkin Quilt Paper packages to make (56) blocks. Refer to the quilt photo for the fabric combinations and placement of the prints

Your blocks should measure 7 ½" × 7 ½" unfinished.

QUILT ASSEMBLY

1. Arrange the blocks in (7) rows of (8) blocks.
2. Sew the blocks together to form rows. Press.
3. Place a sashing strip between each of the rows, then sew the rows and sashing strips together. Press.
4. Attach the side borders to the left and right edges of the quilt top. Press toward the borders.
5. Attach the top and bottom borders to the top and bottom edges of the quilt top. Press toward the borders.

Your quilt top should measure 68 ½" × 73 ½" unfinished.

FINISHING INSTRUCTIONS

Finish quilt by layering the quilt top, batting, and backing. Baste quilt layers together and quilt as desired. Bind with the Gingham Pumpkin binding strips.

Enjoy and share your quilt using the hashtags [#autumnfabric](#), [#pumpkinpaperquilt](#), [#rileyblakedesigns](#) and [#iloverileyblake](#).

PUMPKIN PAPER SCRAPPY QUILT

QUILT LAYOUT DIAGRAM

6 ½" x 68 ½"

6 ½" x 61 ½"

6 ½" x 61 ½"

6 ½" x 68 ½"