

featuring MAARA COLLECTION BY ALEXANDRA BORDALLO

Glimpse



ANGLES

A DIVISION OF AGF

FREE PATTERN

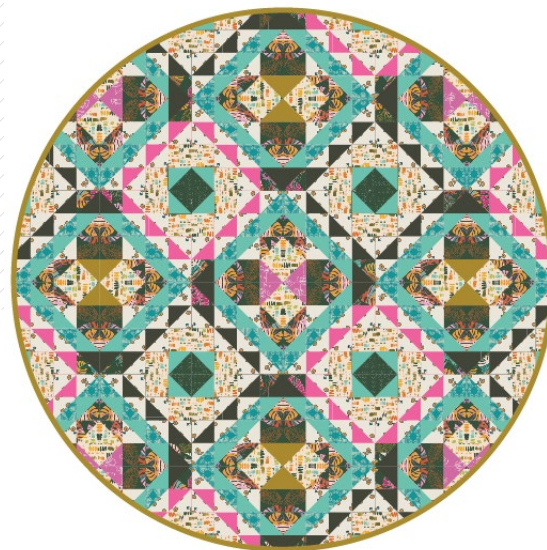
XXXXXXXXXXXXXXXXXXXXXXXXXXXX

Glimpse

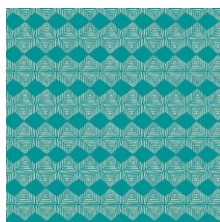
QUILT DESIGNED BY AGF

Maara

FABRICS DESIGNED BY ALEXANDRA BORDALLO



MAA-64900
MAASAI VILLAGE



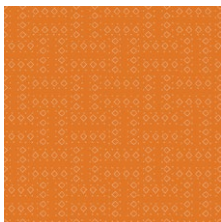
MAA-64901
KHASHA MANTLE



MAA-64902
JUNGLE TOUR



MAA-64903
HAPPY LANDING



MAA-64904
TRAVELED ROADS SUN



MAA-64905
SEE THE WORLD



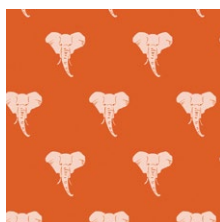
MAA-64906
FYNBOS VALLEY



MAA-64907
SECRET ZEBRA



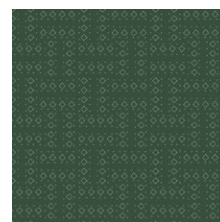
MAA-64908
NGONG HILLS



MAA-64909
WILD & MAJESTIC



MAA-64910
CAPTURED MEMORIES



MAA-64911
TRAVELED ROADS MOON



FEEL THE DIFFERENCE © 2019 Courtesy of Art Gallery Quilts LLC. All Rights Reserved.



FINISHED SIZE | 69" x 69

FABRIC REQUIREMENTS

Fabric A	MAA-64908	1¼ yd.
Fabric B	MAA-64903	1¾ yd.
Fabric C	MAA-64902	1⅓ yd.
Fabric D	MAA-64901	¾ yd.
Fabric E	MAA-64906	¼ yd.
Fabric F	PE-404	½ yd.
Fabric G	PE-424	1 yd.
Fabric H	PE-482	1 yd.
Fabric I	PE-483	½ yd.

BACKING FABRIC

MAA-64906 4¾ yds. *(suggested)*

BINDING FABRIC

PE-483 (Fabric I) *(included)*

CUTTING DIRECTIONS

¼" seam allowances are included.
WOF means width of fabric.

Fabrics A

- Cut ten (10) 7¾" Squares.
- Cut Seventy Two (72) 3½ Squares.

Fabric B

- Cut Thirty three (33) 7¾" Squares.

Fabric C

- Cut Nineteen (19) 7¾" Squares.
- Cut Thirty Six (36) 3½ Squares.

Fabric D

- Cut Fourteen (14) 7¾ Squares.

Fabric E

- Cut three (3) 7¾" Squares.

Fabric F

- Cut Seven) 7¾" Squares.

Fabric G

- Cut Nineteen (19) 7¾" Squares.

Fabric H

- Cut Seventeen (17) 7¾ Squares.

Fabric I

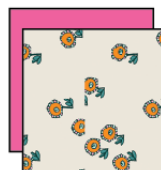
- Cut Two (2) 7¾ Squares.
- Cut Four (4) 1½ x wof. (Binding)

CONSTRUCTION

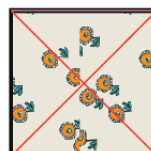
Sew all rights sides together with ¼" seam allowance.

- You need to create a total of four hundred and sixty eight (468) HST in order to construct this quilt top.
- For the HST construction we are using the Magic 8 method.

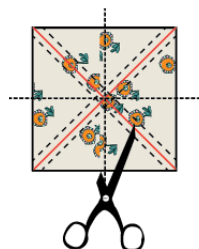
Magic 8 Method



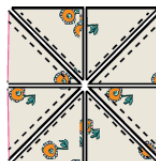
To make the half square triangles 8 at a Time place two 7¾ size squares of fabric Right Sides Together.



Mark a diagonal line across both diagonals on the wrong side of the top fabric square



Using your rotary blade or scissors cut the square into eighths as pictured above. You will cut a horizontal line, vertical line, and on both drawn diagonal lines.



Open the blocks outward and lightly press. Be very careful to only press up and down, NOT back and forth so as not to stretch them. Your seam should be pressed (both layers) toward the darker color. Trim to 3½ x 3½

- Keep doing the Magic 8 method to construct all the HST combinations needed for this quilt top.
- Refer to Diagram below for HST quantity and combinations.

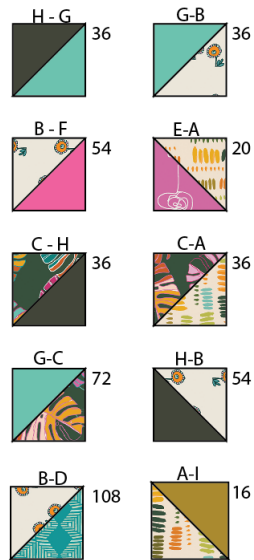


DIAGRAM 2

Block 1:

- To build Block 1 we will have two Sub-Blocks, which we will call **Block 1a** and **Block 1b**. In this project you need a total of five (5) Blocks 1

Block 1a:

- For this project you will need ten (10) blocks 1a.
- Follow Diagram below for HST arrangement by row, then sew rows together

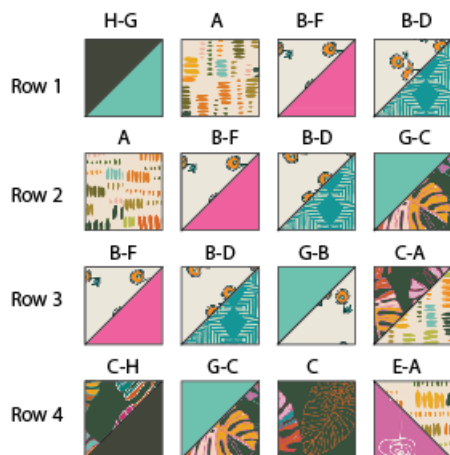


DIAGRAM 3

Block 1b:

- Follow diagram below for HST arrangement by row, then sew rows together.
- For this project you will need ten (10) blocks 1b.

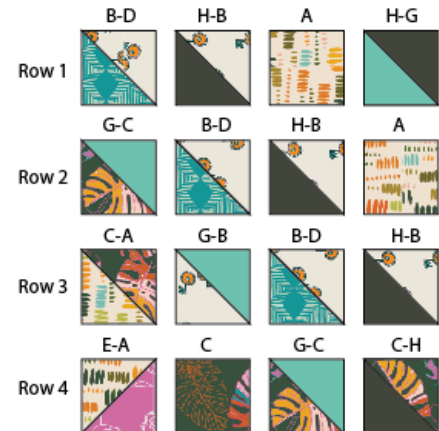


DIAGRAM 4

- Sew block 1a and block 1b
- Sew block 1b and block 1a
- Sew Row 1 and row 2. That will be Block 1

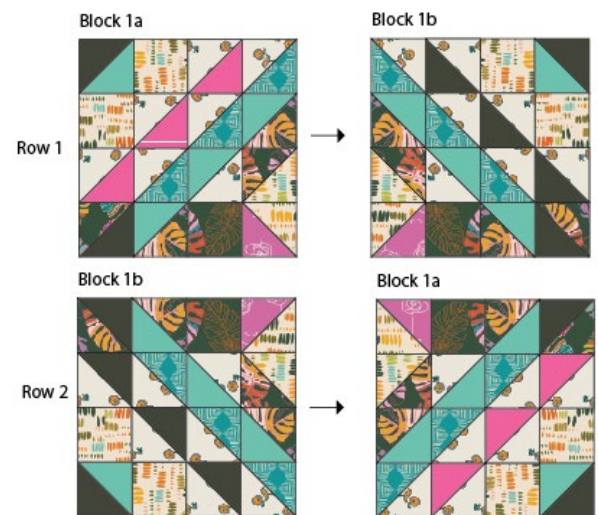


DIAGRAM 5

Block 1



DIAGRAM 6

Block 2:

- To build Block 2 we will have two Sub-Blocks, which we will call **Block 2a** and **Block 2b**. In this project you need a total of five (4) Blocks 2

Block 2a:

- For this project you will need ten (10) blocks 2a.
- Follow Diagram below for HST arrangement by row, then sew rows together

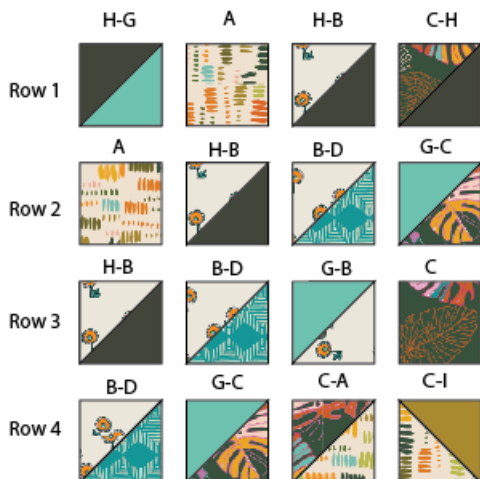


DIAGRAM 7

Block 2b:

- Follow diagram below for HST arrangement by row, then sew rows together.
- For this project you will need ten (10) blocks 2b.

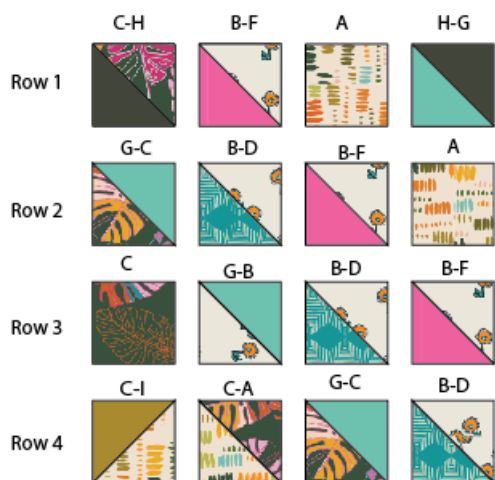


DIAGRAM 8

Block 2

- Sew block 2a and block 2b
- Sew block 2b and block 2a
- Sew Row 1 and row 2. That will be Block 2

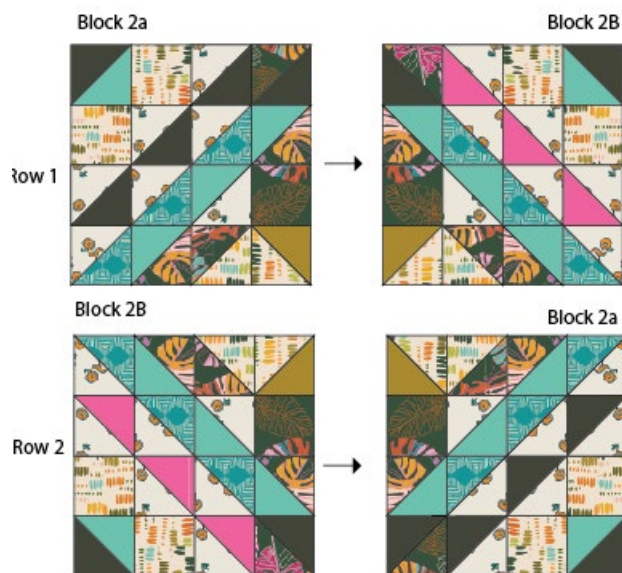


DIAGRAM 9



DIAGRAM 10



Print the template attached at the end of the document 4 times, to create a circle, and place it on the quilt and trim all around it.

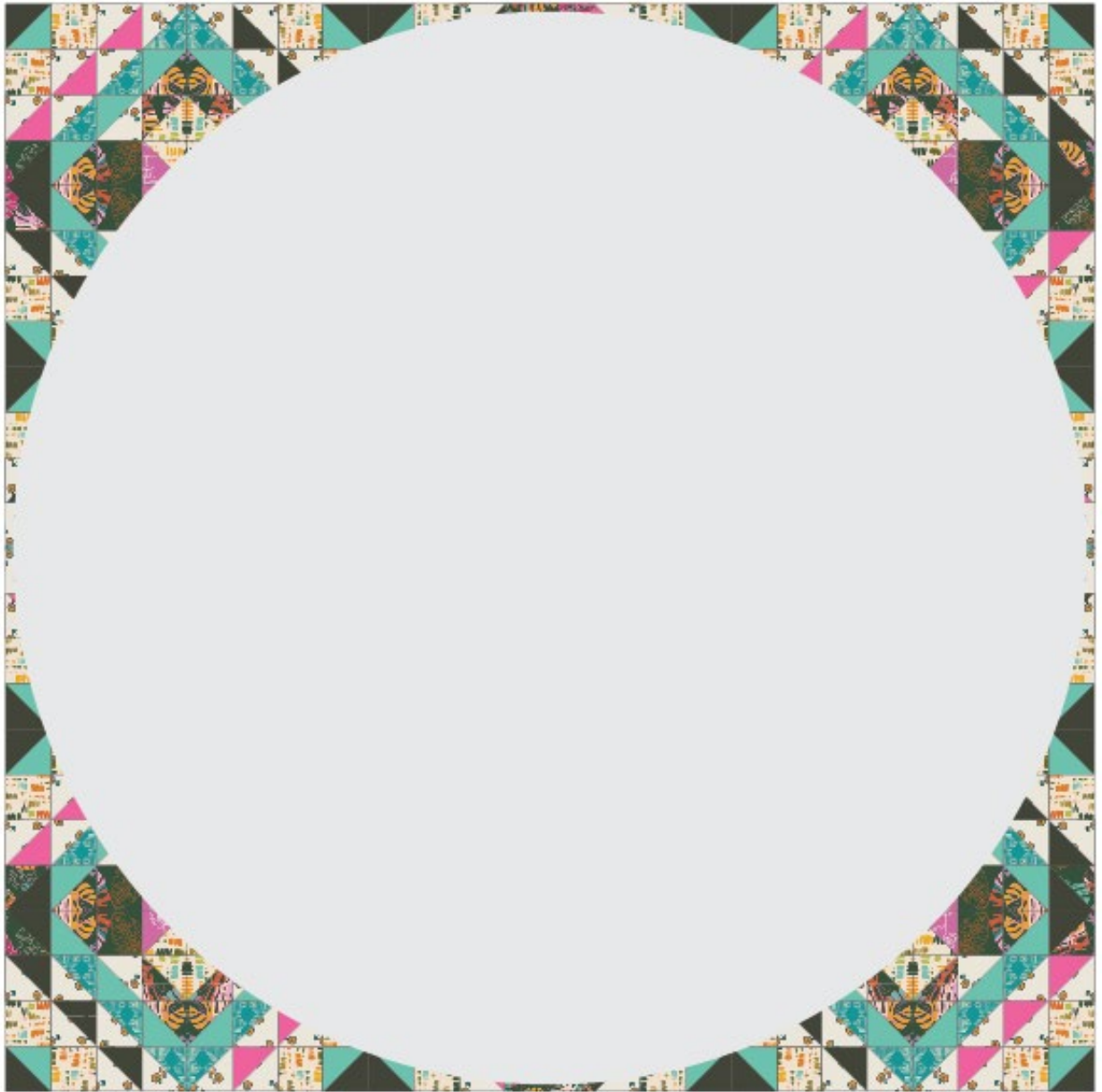


DIAGRAM 12

QUILT ASSEMBLY

Sew rights sides together.

- Place BACKING FABRIC on a large surface wrong side up. Stretch it with masking tape against that surface.
- Place BATTING on top of backing fabric.
- Place TOP on top of the batting with right side facing up. Smooth away wrinkles using your hands.
- Pin all layers together and baste with basting thread, using long stitches. You can also use safety pins to join the layers.
- Machine or hand quilt starting at the center and working towards the corners. Remember that quilting motifs are a matter of personal preference. Have fun choosing yours!
- After you finished, trim excess of any fabric or batting, squaring the quilt to proceed to bind it.

ASSEMBLING THE TOP

Sew all rights sides together with ¼" seam allowance.

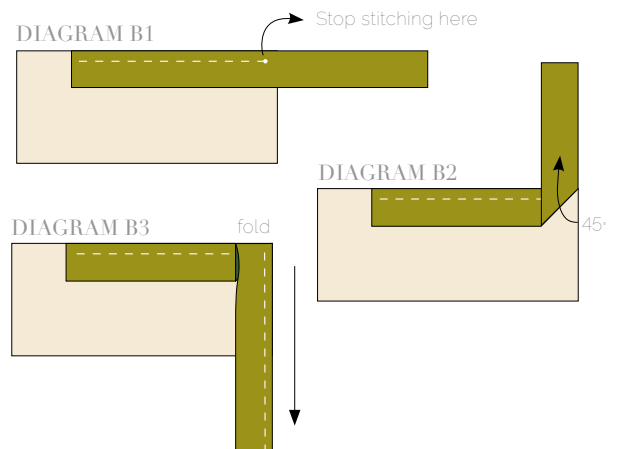
- Arrange your squares into twelve rows of twelve HST each.
- Refer to the Diagram below for HST placement.
- Sew the first row of twelve HST and continue sewing the following rows.
- Attach all the rows together, refer to cover pictures for reference.
- Press seams as you go.

BINDING

Sew rights sides together.

- Cut enough strips 1½" wide by the width of the fabric to make a final strip 294" long. Start sewing the binding strip in the middle of one of the sides of the quilt, placing the strip right side down and leaving an approximated 5" tail. Sew with ¼" seam allowance (using straight stitch), aligning the strip's raw edge with the quilt top's raw edge.

- Stop stitching ¼" before the edge of the quilt (DIAGRAM B 1). Clip the threads. Remove the quilt from under the machine presser foot. Fold the strip in a motion of 45° and upward, pressing with your fingers (DIAGRAM B2). Hold this fold with your finger, bring the strip down in line with the next edge, making a horizontal fold that aligns with the top edge of the quilt (DIAGRAM B3). Start sewing at ¼" of the border, stitching all the layers. Do the same in the four corners of the quilt.
- Stop stitching before you reach the last 5 or 6 inches. Cut the threads and remove the quilt from under the machine presser foot. Lay the loose ends of the binding flat along the quilt edge, folding the ends back on themselves where they meet. Press them together to form a crease. Using this crease as the stitching line, sew the two open ends of the binding with right sides together (you can help yourself marking with a pencil if the crease is difficult to see).
- Trim seam to ¼" and press open. Complete the sewing. Turn binding to back of the quilt, turn raw edge inside and stitch by hand using blind stitch.





artgalleryfabrics.com

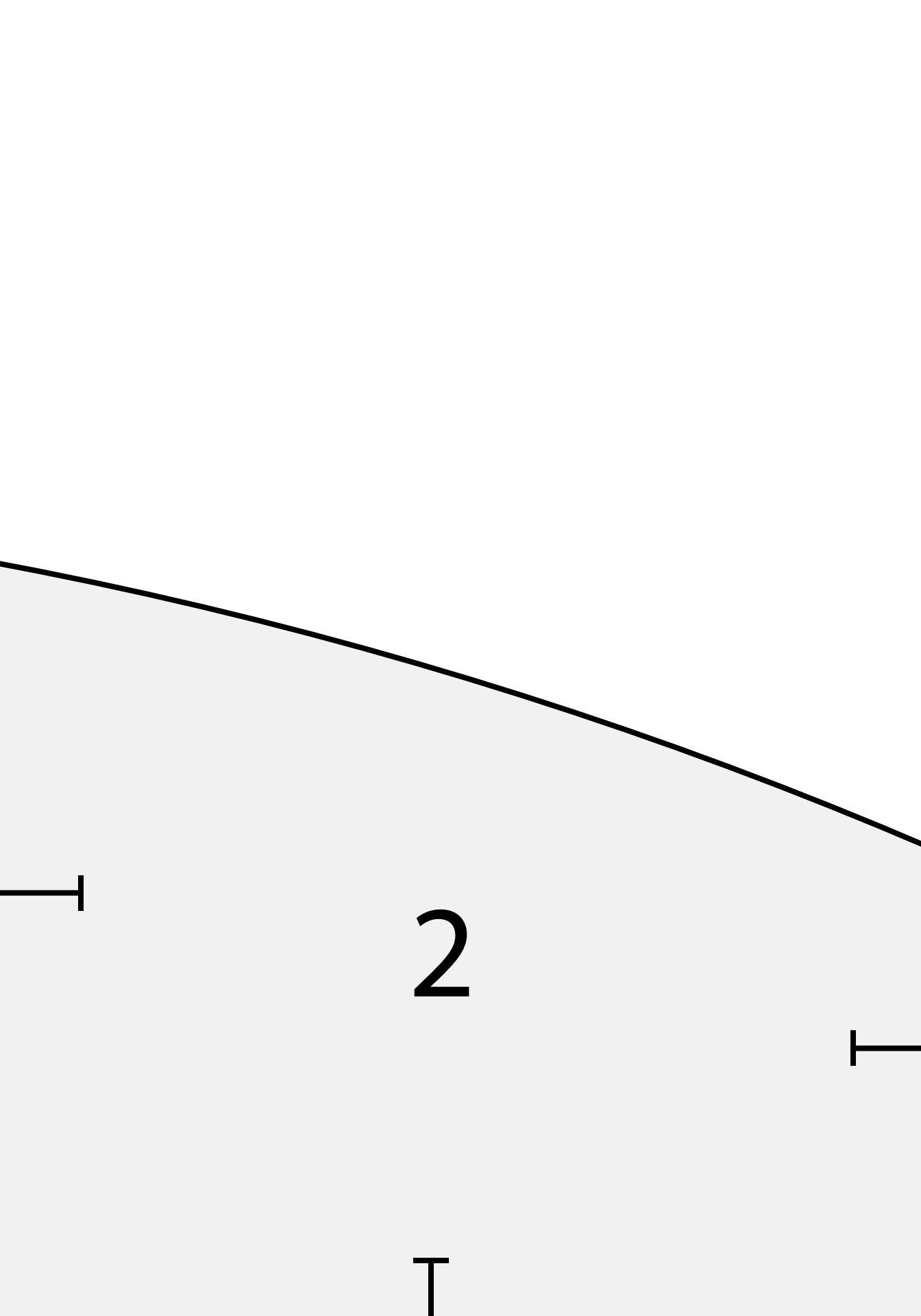
NOTE: While all possible care has been taken to ensure the accuracy of this pattern, We are not responsible for printing errors or the way in which individual work varies. Please read instructions carefully before starting the construction of this quilt. If desired, wash and iron your fabrics before starting to cut.

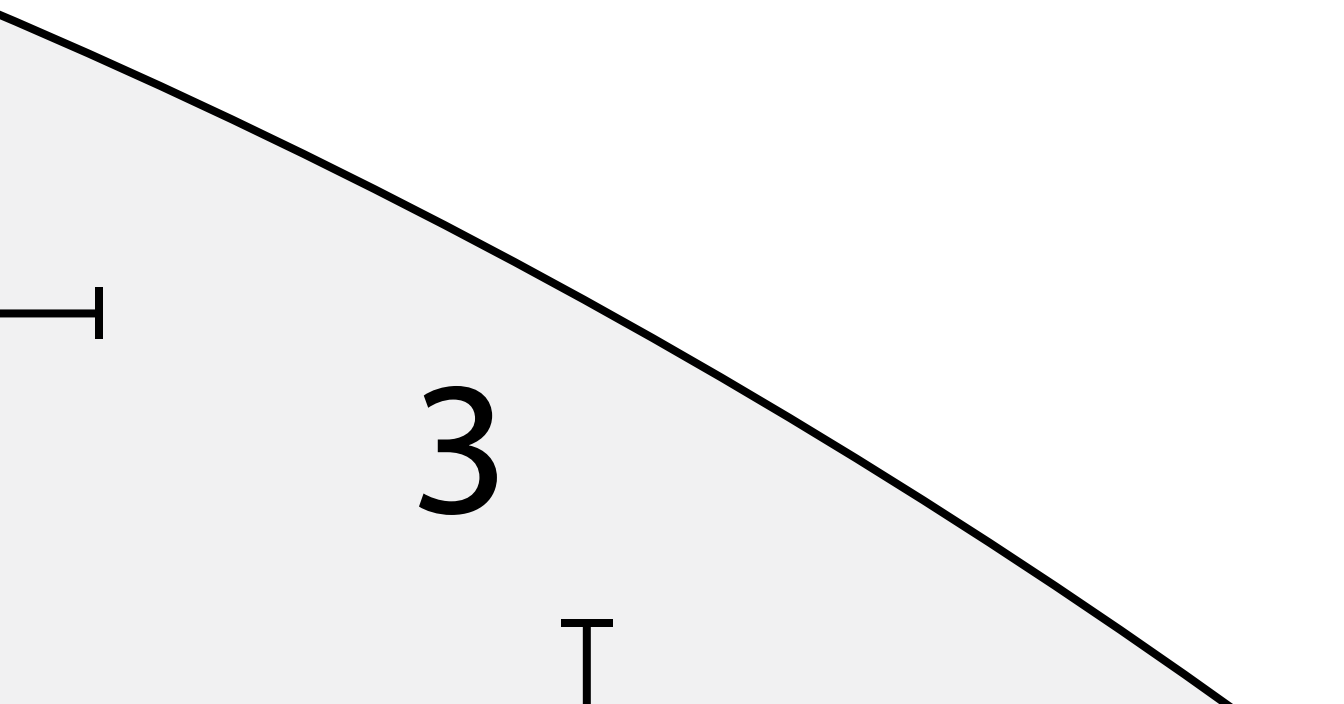
© 2019 Courtesy of Art Gallery Quilts LLC. All Rights Reserved.

1

T

T





1

4

1

T

1

5

—

—

T

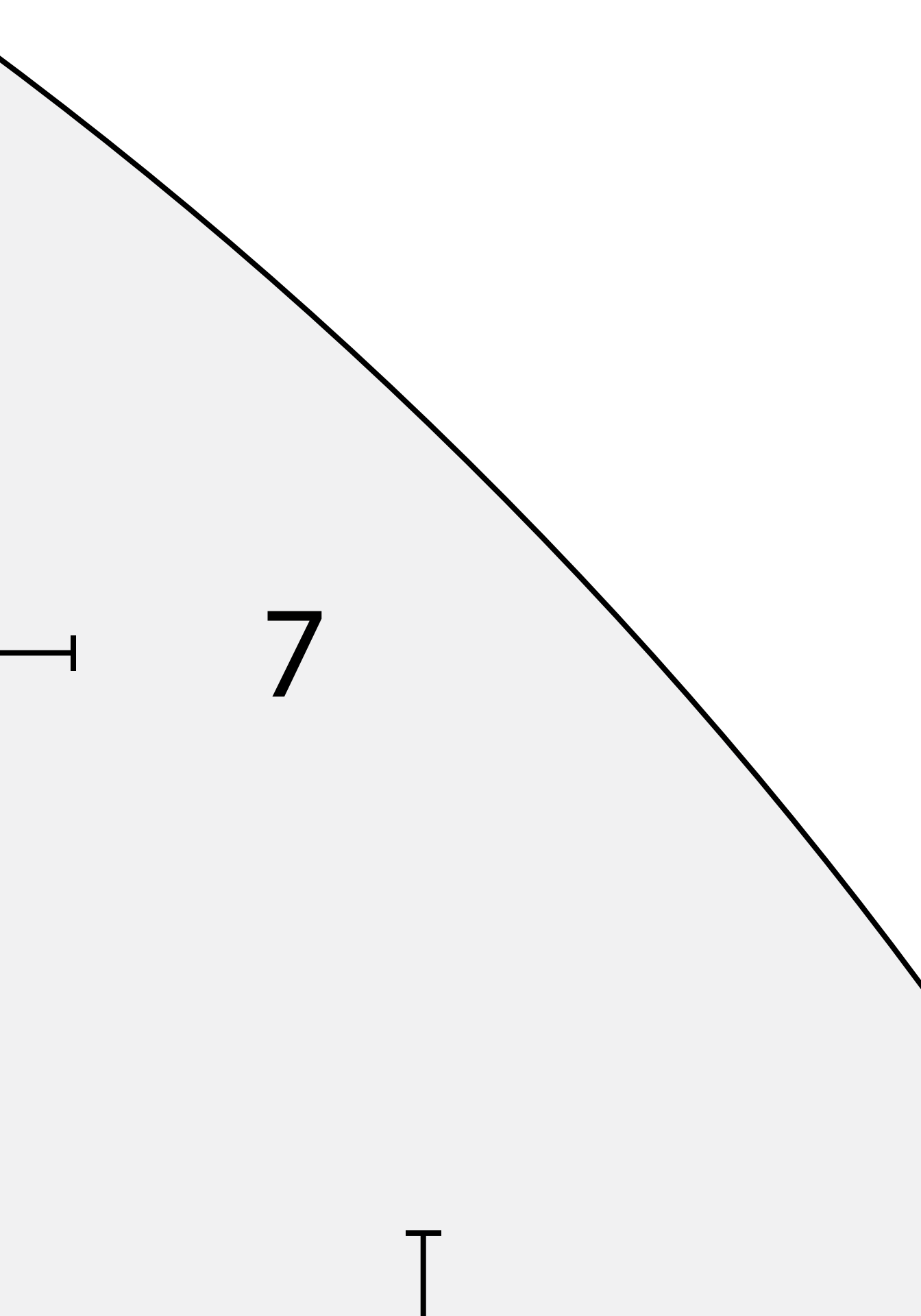
1

6

1

1

1



9

1

1

1

1

10

1

1

1

1

11

1

1

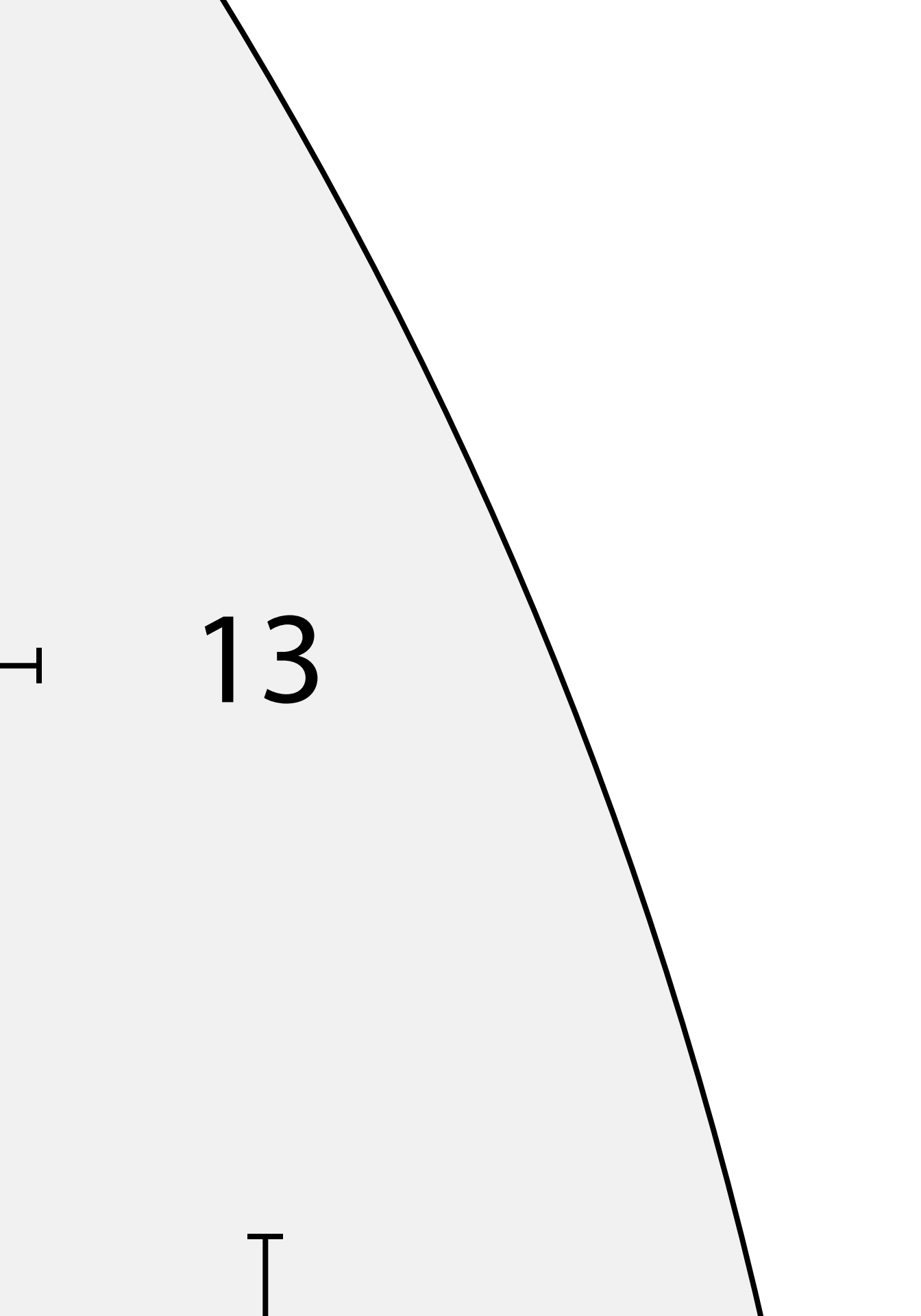
1

→

12

→

↑



1

14

1

1

15

—

—

1

16

→

→

1

17

→

→

1

1

18