

How to Build a Scarecrow Sew Along Guide

by Lori Holt of Bee in My Bonnet



 **Riley Blake**
DESIGNS™



74" x 86"



05/01/2024

How to Use This Sew Along Guide

The How To Build A Scarecrow Sew Along Guide is designed to be a GUIDE. Please note it is NOT a pattern. It was built for cutting and organizational purposes ONLY and designed for you to Bee Prepared to follow along with Lori's detailed instructions in her How To Build A Scarecrow Sew Along blog posts and videos.

Please see page 3 for the schedule of each block's instructional blog post. Visit Lori's blog at beeinmybonnetco.blogspot.com on the listed dates for the detailed instructions for that date's block(s).



Stay up-to-date on all Lori Holt happenings and projects:



Visit Lori's Blog at BeeInMyBonnetCo.blogspot.com



Subscribe to the Lori Holt YouTube channel



Follow her on Instagram at @beelori1

Enjoy and share your quilt using the hashtags
#howtobuildascarecrowquilt, #beeinmybonnet,
#rileyblakedesigns, and #iloverileyblake.

How to Build a Scarecrow Sew Along Schedule



Starting Monday, April 29, 2024

April 29	Bee Prepared Blog Post and Pieced Blocks
May 20	Crow, Moon and Stars Blocks
May 27	Gloves, Sunflower, and Scarecrow Word Blocks
June 3	Tools, Bandana, Gunny Sack Blocks
June 10	Corn, Leaves, Face Blocks
June 17	Overalls, Boots Blocks
June 24	Hat, Apple, Shirt Blocks
July 1	Hay and Pumpkin Block
July 6	The Big Finish!

Bee Prepared for our next sew along, Let's Make A Snowman,
on August 26, 2024!

How to Build a Scarecrow Sew Along Guide

FINISHED QUILT SIZE 74" × 86"

WOF = Width of Fabric, LOF = Length of Fabric

This guide requires a basic knowledge of quilting techniques and terminology. The quilt and block diagrams portrayed are virtual images. The layout and look of your project may differ when using actual fabric.

The guide is intended to be used in conjunction with Lori Holt's How to Build a Scarecrow Sew Along. Join Lori on her blog every Monday starting May 20, 2024 at beeinmybonnetco.blogspot.com for weekly instructions. Visit [Lori's YouTube Channel](#) during Week 1 and don't forget to watch for her Bee Prepared blog post on April 29, 2024. Enjoy and share your quilt using the hashtag #howtobuildascarecrowquilt, #beeinmybonnet, #rileyblakedesigns, and #iloverileyblake.

*NOTE: All appliqué block backgrounds are cut a little larger than unfinished size to allow for trimming up.

The appliqué portions of the quilt are made using Lori's applique method. The link below to the Week 1 video of a previous Sew Along on Lori's YouTube Channel shows her appliqué technique, <https://www.youtube.com/watch?v=xe7nvV6BHXy>.

FABRIC REQUIREMENTS

Fat ¼ of Each:

C14650-RAISIN Floral
C14651-LETTUCE Plaid
C14656-CORAL Bouquet
C14656-PLUM Bouquet
C14656-RAINDROP Bouquet
C14657-DENIM Dots
C14658-AUTUMN Stitch
C14659-CIDER Cosmos
C14659-MILKCAN Cosmos
C14659-RILEYRED Cosmos
C14662-MILKCAN Leaves
C14662-PLUM Leaves
C14666-TAFFY Sunflowers
C14667-PUMPKIN Words
C14668-RAISIN Kerchief

Fat ¼ of Each:

C14651-MARIGOLD Plaid
C14652-CHESTNUT Berries
C14652-RAINDROP Berries
C14653-PEWTER Squares
C14654-CIDER Blossom
C14655-CORAL Posy
C14657-SCHOOL Dots
C14660-PUMPKIN Gingham
C14661-BROWN Homespun
C14663-RAISIN Sprig
C14664-LETTUCE Perennial
C14664-YAM Perennial
C14665-BASIL Stripe
C14666-CIDER Sunflowers



How to Build a Scarecrow Sew Along Guide

Fabric Cutting Guide (WOF = Width of Fabric, LOF = Length of Fabric)

Always be mindful when cutting pieces from each fabric in your kit by cutting **LARGEST PIECES FIRST**, as well as any WOF strips for the bias tape makers.

FABRIC REQUIREMENTS (cont'd.)

C14667-LATTE Words
C14668-SCHOOL Kerchief

¼ Yard of Each:

C14654-RILEYRED Blossom
C14658-DENIM Stitch
C14661-RAINDROP Homespun
C14663-CLOVER Sprig

⅓ Yard of Each:

C14664-LATTE Perennial
C14670-LATTE Gunny Sack

⅝ Yard of Each:

C14660-BASIL Gingham
C14668-BASIL Kerchief

½ Yard of Each:

C14653-LATTE Squares
C14653-MARIGOLD Squares
C14655-LATTE Posy
C14655-MILKCAN Posy
C14665-DENIM Stripe
C14668-LATTE Kerchief

⅞ Yard of Each:

C14652-LATTE Berries
C14658-LATTE Stitch
C14663-LATTE Sprig
C14667-TEADYE Words
C14669-LATTE Maple

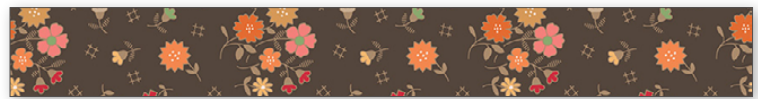
Additional Fabrics:

¾ Yard C14668-CIDER Kerchief (includes binding)
2 ½ Yards C14650-LATTE Floral
2 ¾ Yards WB14673-RAINDROP Floral Wide Back
(suggested backing)

NOTIONS/SUPPLIES

STT-35006 How to Build a Scarecrow Sew Simple Shapes™
Clover Bias Tape Makers: ¼", ½", and ¾"
(1) Package ST-21954 Lori Holt Stitch Cute Little Buttons
(1) Package STB-6023 Lori Holt Cute Little Buttons ¼"
N093-GLUE Sue Daley Designs Appliqué Glue
(2) Packages ST-4913 Sew-in Interfacing
N039-7803 Point 2 Point Turner
TH-LH5080HBE45 Honey Bee Essentials Aurifil Thread Box
ST-8517 Nifty Needles™
ST-33034 Busy Bee Pencils
ST-33029 Flower Power Magnetic Pin Holder
ST-34966 Autumn Bee Keeper Binder
Lori Holt Cute Cuts™ Trim-it™ Rulers: 2 ½", 3 ½", 4 ½", 6 ½",
7 ½", 8 ½", 9 ½", 10 ½", 12 ½", 15 ½", 18 ½", and 20 ½"
Design Boards
Seams Sew Easy™ Seam Guide
Honey Bee 5" Scissors
ST-34011 Sweet Sewing 9" Scissors
STCC-34021 Lori Holt Cute Cuts™ ¼" Marking Ruler Set
RTY-2C-RED Olfa 45mm Rotary Cutter
ST-33034 Lori Holt Busy Bee Mechanical Pencils
ST-13561 Lori Holt Sew Handy Stickers
ST-11311 12" Tailor's Clapper

CUTTING INSTRUCTIONS



C14650-Raisin Floral (Fat ¼)
Cut (13) 2 ½" × 2 ½" squares—(5) C-Pieced Block #8 and
(8) D-Pieced Block #21



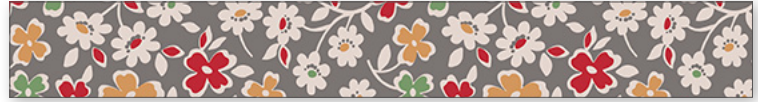
C14651-Lettuce Plaid (Fat ⅛)
Cut (8) 2 ½" × 2 ½" squares—(4) B-Pieced Block #3 and
(4) E-Pieced Block #18

How to Build a Scarecrow Sew Along Guide



C14656-Coral Bouquet (Fat 1/8)

Cut (1) 2 3/4" x 2 3/4" square, use R-22 for Overalls Block
Cut (13) 2 1/2" x 2 1/2" squares—(8) D-Pieced Block #7 and
(5) for C-Pieced Block #16



C14659-Milk Can Cosmos (Fat 1/8)

Cut (1) 2 3/4" x 2 3/4" square, use R-22 for Overalls Block
Cut (9) 2 1/2" x 2 1/2" squares—(5) C-Pieced Block #5 and
(4) E-Pieced Block #12



C14656-Plum Bouquet (Fat 1/8)

Cut (5) 2 1/2" x 2 1/2" squares, label C for Pieced Block #6



C14659-Riley Red Cosmos (Fat 1/8)

Cut (8) 2 1/2" x 2 1/2" squares—(4) B-Pieced Block #9 and
(4) E-Pieced Block #20



C14656-Raindrop Bouquet (Fat 1/8)

Cut (9) 2 1/2" x 2 1/2" squares—(4) E-Pieced Block #10 and
(5) C-Pieced Block #18



C14662-Milk Can Leaves (Fat 1/8)

Cut (1) 2 1/2" x 2 1/2" square, use R-13 for Sunflower Block
Cut (9) 2 1/2" x 2 1/2" squares—(5) C-Pieced Block #1 and
(4) B-Pieced Block #12



C14657-Denim Dots (Fat 1/8)

Cut (1) 4 1/2" x 5 3/4" rectangle, use R-17 for Overalls Block
Cut (1) 3 1/2" x 6" rectangle, use R-1 for Letter S Block
Cut (12) 2 1/2" x 2 1/2" squares—(8) D-Pieced Block #4 and
(4) B-Pieced Block #11



C14662-Plum Leaves (Fat 1/8)

Cut (1) 4" x 6" rectangle, use R-6 for Letter O Block
Cut (1) 2 3/4" x 3" rectangle, use R-53 for Leaves Block
Cut (10) 2 1/2" x 2 1/2" squares—(5) C-Pieced Block #10 and
(5) C-Pieced Block #20



C14658-Autumn Stitch (Fat 1/8)

Cut (1) 7" x 7" square, use R-58 for Hay Bale and Pumpkin Block
Cut (12) 2 1/2" x 2 1/2" squares—(8) D-Pieced Block #1 and
(4) E-Pieced Block #19



C14666-Taffy Sunflowers (Fat 1/8)

Cut (1) 2 3/4" x 3" rectangle, use R-53 for Leaves Block
Cut (13) 2 1/2" x 2 1/2" squares—(5) C-Pieced Block #4 and
(8) D-Pieced Block #14



C14659-Cider Cosmos (Fat 1/8)

Cut (9) 2 1/2" x 2 1/2" squares—(5) C-Pieced Block #2 and
(4) B-Pieced Block #15



C14667-Pumpkin Words (Fat 1/8)

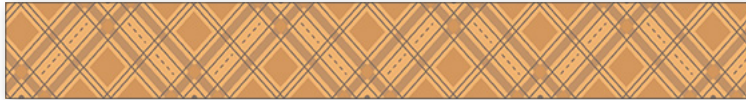
Cut (1) 2 3/4" x 3" rectangle, use R-53 for Leaves Block
Cut (1) 2 3/4" x 2 3/4" square, use R-22 for Overalls Block
Cut (9) 2 1/2" x 2 1/2" squares—(5) C-Pieced Block #17 and
(4) B-Pieced Block #21

How to Build a Scarecrow Sew Along Guide



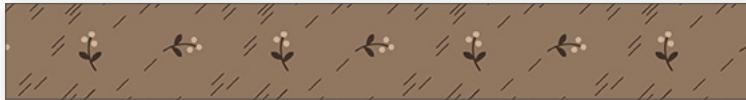
C14668-Raisin Kerchief (Fat ⅛)

Cut (12) $\frac{5}{8}$ " \times 2 $\frac{1}{4}$ " strips; use bias tape maker to make $\frac{1}{4}$ " Straight Bias for Leaves Block
Cut (12) 2 $\frac{1}{2}$ " \times 2 $\frac{1}{2}$ " squares—(4) E-Pieced Block #3 and (8) for D-Pieced Block #11
Cut (2) 2 $\frac{1}{4}$ " \times 4 $\frac{1}{2}$ " rectangles, use R-48 for Crow Block



C14651-Marigold Plaid (Fat ¼)

Cut (4) $\frac{5}{8}$ " \times 4" strips; use bias tape maker to make $\frac{1}{4}$ " Straight Bias for Crow Block
Cut (1) 7 $\frac{1}{2}$ " \times 7 $\frac{1}{2}$ " square, use R-56 for Sunflower Block
Cut (1) 3 $\frac{3}{4}$ " \times 4 $\frac{1}{2}$ " rectangle, use R-44 for Moon and Stars Block
Cut (1) 3" \times 3 $\frac{1}{2}$ " rectangle, use R-45 for Moon and Stars Block
Cut (1) 2 $\frac{3}{4}$ " \times 2 $\frac{3}{4}$ " square, use R-22 for Overalls Block
Cut (1) 2 $\frac{1}{2}$ " \times 14 $\frac{1}{2}$ " rectangle for Hay Bale and Pumpkin Block
Cut (13) 2 $\frac{1}{2}$ " \times 2 $\frac{1}{2}$ " squares—(4) B-Pieced Block #7, (5) C-Pieced Block #12 and (4) B-Pieced Block #18
Cut (2) 1 $\frac{1}{2}$ " \times 1 $\frac{1}{2}$ " squares for Crow Block; use R-47 after piecing



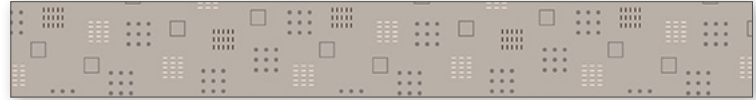
C14652-Chestnut Berries (Fat ¼)

Cut (2) 6 $\frac{1}{4}$ " \times 6 $\frac{1}{4}$ " squares for Boots Block (1 reverse); use R-30 after piecing
Cut (1) 4" \times 6" rectangle, use R-2 for Letter C Block
Cut (1) 3" \times 3 $\frac{3}{4}$ " rectangle, use R-60 for Hay Bale and Pumpkin Block
Cut (12) 2 $\frac{1}{2}$ " \times 2 $\frac{1}{2}$ " squares—(4) B-Pieced Block #4 and (8) D-Pieced Block #13



C14652-Raindrop Berries (Fat ¼)

Cut (1) 5 $\frac{1}{2}$ " \times 6" rectangle, use R-7 for Letter W Block
Cut (13) 2 $\frac{1}{2}$ " \times 2 $\frac{1}{2}$ " squares—(8) D-Pieced Block #3 and (5) C-Pieced Block #21
Cut (1) 2" \times 8 $\frac{3}{4}$ " rectangle, use R-42 for Tools Block



C14653-Pewter Squares (Fat ¼)

Cut (2) $\frac{5}{8}$ " \times 8 $\frac{1}{2}$ " strips; use bias tape maker to make $\frac{1}{4}$ " Straight Bias for Hay Bale and Pumpkin Block
Cut (2) $\frac{5}{8}$ " \times 3 $\frac{1}{2}$ " strips; use bias tape maker to make $\frac{1}{4}$ " Straight Bias for Hay Bale and Pumpkin Block
Cut (1) 2 $\frac{3}{4}$ " \times 3" rectangle, use R-53 for Leaves Block
Cut (21) 2 $\frac{1}{2}$ " \times 2 $\frac{1}{2}$ " squares—(4) B-Pieced Block #1, (4) E-Pieced Block #6, (5) C-Pieced Block #9, (4) B-Pieced Block #13, and (4) E-Pieced Block #15



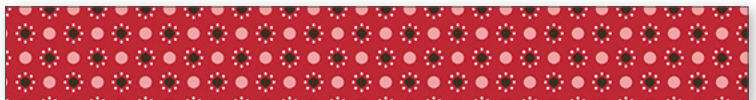
C14654-Cider Blossom (Fat ¼)

Cut (1) 5 $\frac{1}{4}$ " \times 10 $\frac{1}{2}$ " rectangle, use R-43 for Moon and Stars Block
Cut (9) 2 $\frac{1}{2}$ " \times 2 $\frac{1}{2}$ " squares—(5) C-Pieced Block #3 and (4) E-Pieced Block #11



C14655-Coral Posy (Fat ¼)

Cut (1) 2 $\frac{1}{2}$ " \times 3" rectangle, use R-62 for Apples Block
Cut (21) 2 $\frac{1}{2}$ " \times 2 $\frac{1}{2}$ " squares—(8) D-Pieced Block #9, (5) C-Pieced Block #11, and (8) D-Pieced Block #22
Cut (2) 2" \times 2" squares, use R-12 for Face Block



C14657-Schoolhouse Dots (Fat ¼)

Cut (1) 1 $\frac{7}{8}$ " \times 2" strip; use bias tape maker to make 1" Straight Bias for Overalls Block
Cut (6) $\frac{5}{8}$ " \times 2" strips; use bias tape maker to make $\frac{1}{4}$ " Straight Bias for Gunny Sack Block
Cut (1) 4" \times 5 $\frac{3}{4}$ " rectangle, use R-5 for Letter E Block
Cut (1) 2 $\frac{3}{4}$ " \times 3" rectangle, use R-53 for Leaves Block
Cut (1) 2 $\frac{1}{2}$ " \times 3" rectangle, use R-62 for Apples Block
Cut (13) 2 $\frac{1}{2}$ " \times 2 $\frac{1}{2}$ " squares—(5) C-Pieced Block #7 and (8) D-Pieced Block #15
Cut (1) 2" \times 2 $\frac{1}{4}$ " rectangle, use R-35 for Face Block
Cut (1) 1 $\frac{1}{2}$ " \times 1 $\frac{1}{2}$ " square, use R-10 for Bandana Block

How to Build a Scarecrow Sew Along Guide



C14660-Pumpkin Gingham (Fat ¼)

Cut (1) 7 ¼" × 10" rectangle, use R-57 for Hay Bale and Pumpkin Block
Cut (1) 3" × 6" rectangle, use R-4 for Letter R Block
Cut (1) 2 ¾" × 3" rectangle, use R-53 for Leaves Block
Cut (12) 2 ½" × 2 ½" squares—(4) B-Pieced Block #6 and (8) D-Pieced Block #10



C14661-Brown Homespun (Fat ¼)

Cut (5) ⅝" × 1 ½" strips; use bias tape maker to make ¼" Straight Bias for Apples Block
Cut (1) 7 ½" × 14 ½" rectangle for Gunny Sack Block
Cut (1) 2 ¾" × 3" rectangle, use R-53 for Leaves Block
Cut (4) 2 ½" × 2 ½" squares, label E for Pieced Block #17
Cut (2) 2" × 4" rectangles use R-31 (1 reverse) for Boots Block



C14663-Raisin Sprig (Fat ¼)

Cut (2) 4 ½" × 8 ¾" rectangles for Crow Block; use R-47 after piecing
Cut (12) 2 ½" × 2 ½" squares—(4) B-Pieced Block #14 and (8) D-Pieced Block #19
Cut (2) 1 ¾" × 6 ¼" rectangles for Boots Block; use R-30 after piecing



C14664-Lettuce Perennial (Fat ¼)

Cut (2) 3 ¼" × 5" rectangles, use R-32 (1 reverse) for Gloves Block
Cut (2) 3 ¼" × 3 ½" rectangles, use R-51 (1 reverse) for Corn Block
Cut (2) 3 ¼" × 3 ¼" squares, use R-52 (1 reverse) for Corn Block
Cut (1) 2 ¾" × 3" rectangle, use R-53 for Leaves Block
Cut (1) 2 ½" × 3" rectangle, use R-62 for Apples Block
Cut (8) 2 ½" × 2 ½" squares—(4) E-Pieced Block #5 and (4) B-Pieced Block #16
Cut (2) 1 ½" × 3 ¾" rectangles, use R-33 (1 reverse) for Gloves Block



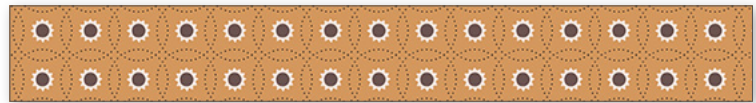
C14664-Yam Perennial (Fat ¼)

Cut (1) 3 ¾" × 7 ¼" rectangle, use R-59 for Hay Bale and Pumpkin Block
Cut (17) 2 ½" × 2 ½" squares—(4) E-Pieced Block #4, (8) D-Pieced Block #8, and (5) C-Pieced Block #13



C14665-Basil Stripe (Fat ¼)

Cut (1) 1 ¼" × 17" strip; use bias tape maker to make ¾" Straight Bias for Shirt Block
Cut (1) 1" × 8 ½" strip; use bias tape maker to make ½" Straight Bias for Gunny Sack Block
Cut (1) 3" × 6" rectangle, use R-4 for Letter R Block
Cut (9) 2 ½" × 2 ½" squares—(5) C-Pieced Block #14 and (4) E-Pieced Block #21
Cut (2) 2 ½" × 2 ¾" rectangles for Shirt Block; use R-24 after piecing
Cut (1) 1 ½" × 3 ½" rectangle, use R-27 for Shirt Block



C14666-Cider Sunflowers (Fat ¼)

Cut (1) 7" × 13 ¾" rectangle, use R-28 for Hat Block
Cut (1) 3 ¾" × 4 ½" rectangle, use R-44 for Crow Block
Cut (1) 2 ¾" × 3" rectangle, use R-53 for Leaves Block
Cut (4) 2 ½" × 2 ½" squares, label B for Pieced Block #20



C14667-Latte Words (Fat ¼)

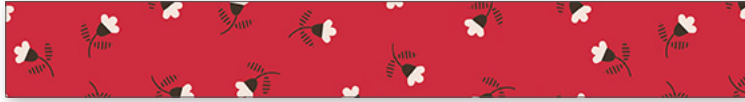
Cut (2) 4 ½" × 4 ½" squares for Leaves Block
Cut (32) 2 ½" × 2 ½" squares—(16) A-Pieced Block #4 and (16) A-Pieced Block #14



C14668-Schoolhouse Kerchief (Fat ¼)

Cut (1) 5 ¾" × 9" rectangle, use R-36 for Bandana Block
Cut (1) 2 ¾" × 3" rectangle, use R-53 for Leaves Block
Cut (1) 2 ½" × 3" rectangle, use R-62 for Apples Block
Cut (12) 2 ½" × 2 ½" squares—(4) B-Pieced Block #2 and (8) D-Pieced Block #18

How to Build a Scarecrow Sew Along Guide



C14654-Riley Red Blossom (¼ yard)

Cut (2) 3 ¼" × 4 ¾" rectangles, use R-37 (1 reverse) for Bandana Block
Cut (1) 2 ¾" × 2 ¾" square, use R-22 for Overalls Block
Cut (16) 2 ½" × 2 ½" squares—(8) D-Pieced Block #5 and (8) D-Pieced Block #12
Cut (2) 1 ¾" × 2 ½" rectangles, use R-38 for Bandana Block



C14658-Denim Stitch (¼ yard)

Cut (1) 4 ½" × 4 ½" square, use R-21 for Overalls Block
Cut (2) 2 ¼" × 5" rectangles, use R-19 for Overalls Block
Cut (2) 1 ¾" × 4 ¼" rectangles, use R-18 (1 reverse) for Overalls Block
Cut (12) 2 ½" × 2 ½" squares—(4) E-Pieced Block #7 and (8) D-Pieced Block #17
Cut (1) 1 ¾" × 8 ¾" rectangle, use R-20 for Overalls Block



C14661-Raindrop Homespun (¼ yard)

Cut (1) 4" × 6" rectangle, use R-3 for Letter A Block
Cut (20) 2 ½" × 2 ½" squares—(4) E-Pieced Block #2, (8) D-Pieced Block #6, and (8) D-Pieced Block #20
Cut (1) 2" × 7" rectangle, use R-29 for Hat Block



C14663-Clover Sprig (¼ yard)

Cut (1) 1" × 30" strip; use bias tape maker to make ½" Straight Bias for Corn Block
Cut (1) 1" × 22 ¾" strip; use bias tape maker to make ½" Straight Bias for Corn Block
Cut (1) 1" × 14 ¼" strip; use bias tape maker to make ½" Straight Bias for Corn Block
Cut (1) 3 ¾" × 3 ¾" square, use R-61 for Hay Bale and Pumpkin Block
Cut (1) 2 ¾" × 3" rectangle, use R-53 for Leaves Block
Cut (8) 2 ½" × 2 ½" squares—(4) E-Pieced Block #1 and (4) B-Pieced Block #17



C14664-Latte Perennial (⅓ yard)

Cut (1) 4 ½" × 4 ½" square for Leaves Block
Cut (34) 2 ½" × 2 ½" squares—(2) for Hay Bale and Pumpkin Block, (16) A-Pieced Block #8, and (16) A-Pieced Block #16
Cut (2) 2" × 16 ½" rectangles for Hay Bale and Pumpkin Block
Cut (2) 1 ½" × 10 ½" rectangles for Hay Bale and Pumpkin Block



C14670-Latte Gunny Sack (⅓ yard)

Cut (1) 1" × 2" strip; use bias tape maker to make ½" Straight Bias for Shirt Block
Cut (1) 4 ½" × 9 ½" rectangle for Face Block
Cut (2) 4 ½" × 4 ½" squares—(1) for Apples Block and (1) for Leaves Block
Cut (32) 2 ½" × 2 ½" squares—(16) A-Pieced Block #1 and (16) A-Pieced Block #11



C14660-Basil Gingham (⅓ yard)

Cut (2) 3 ¾" × 3 ½" rectangles, use R-51 (1 reverse) for Corn Block
Cut (3) 3 ¾" × 3 ¾" squares, use R-52 (1 reverse) for Corn Block
Cut (2) 3" × 4 ¼" rectangles, use R-26 (1 reverse) for Shirt Block
Cut (2) 2 ¾" × 13 ½" rectangles for Shirt Block; use R-24 after piecing
Cut (2) 2 ¾" × 3 ½" rectangles, use R-25 for Shirt Block
Cut (13) 2 ½" × 2 ½" squares—(8) D-Pieced Block #2 and (5) C-Pieced Block #19
Cut (1) 2" × 18 ¼" rectangle, use R-49 for Crow Block



C14668-Basil Kerchief (⅓ Yard)

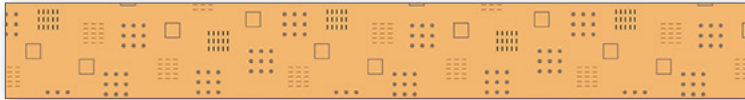
Cut (1) 7 ¾" × 18 ½" rectangle, use R-23 for Shirt Block
Cut (2) 3 ¾" × 3 ¾" squares, use R-52 (1 reverse) for Corn Block
Cut (3) 3 ¾" × 3 ½" rectangles, use R-51 (2 reverse) for Corn Block
Cut (9) 2 ½" × 2 ½" squares—(4) E-Pieced Block #8 and (5) C-Pieced Block #15
Cut (2) 1 ½" × 2 ¼" rectangles, use R-34 for Gloves Block

How to Build a Scarecrow Sew Along Guide



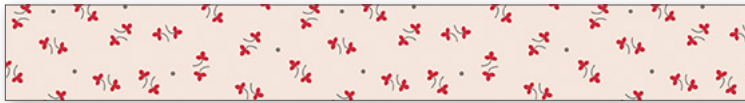
C14653-Latte Squares (½ yard)

Cut (1) 10 ½" × 11 ½" rectangle for Tools Block
Cut (1) 9 ½" × 19 ½" rectangle for Crow Block
Cut (2) 4 ½" × 4 ½" squares—(1) for Apples Block and (1) for Leaves Block
Cut (1) 3 ¼" × 3 ½" rectangle, use R-40 for Tools Block
Cut (32) 2 ½" × 2 ½" squares—(16) A-Pieced Block #6 and (16) A-Pieced Block #22



C14653-Marigold Squares (½ yard)

Cut (1) 8 ½" × 14 ½" rectangle for Hay Bale and Pumpkin Block
Cut (1) 6 ¼" × 6 ¼" square, use R-55 for Sunflower Block
Cut (1) 3" × 3 ½" rectangle, use R-45 for Moon and Stars Block
Cut (1) 2 ¾" × 3" rectangle, use R-53 for Leaves Block
Cut (1) 2 ½" × 3" rectangle, use R-62 for Apples Block
Cut (2) 2 ½" × 3" rectangles, use R-46 for Moon and Stars Block
Cut (16) 2 ½" × 2 ½" squares—(4) B-Pieced Block #5, (4) E-Pieced Block #9, and (8) D-Pieced Block #16
Cut (3) 2 ¼" × 5" rectangles, use R-50 for Corn Block



C14655-Latte Posy (½ yard)

Cut (2) 4 ½" × 4 ½" squares—(1) for Apples Block and (1) for Leaves Block
Cut (2) 2 ½" × 9 ½" rectangles for Gunny Sack Block
Cut (48) 2 ½" × 2 ½" squares—(16) A-Pieced Block #5, (16) A-Pieced Block #9, and (16) A-Pieced Block #18
Cut (2) 1 ½" × 14 ½" rectangles for Gunny Sack Block



C14655-Milk Can Posy (½ yard)

Cut (6) 1 ½" × WOF strips. Sew together end-to-end, then subcut:

(2) 1 ½" × 57 ½" Side Border A strips
(2) 1 ½" × 47 ½" Top/Bottom Border A strips
Cut (1) 4" × 6" rectangle, use R-2 for Letter C Block
Cut (1) 4" × 4" square, use R-14 for Sunflower Block
Cut (4) 2 ½" × 2 ½" squares, label as E for Pieced Block #16
Cut (1) 2 ¼" × 5 ¼" rectangle, use R-41 for Tools Block



C14665-Denim Stripe (½ yard)

Cut (1) 9 ¼" × 18" rectangle, use R-15 for Overalls Block
Cut (1) 6 ¾" × 8" rectangle, use R-16 for Overalls Block
Cut (8) 2 ½" × 2 ½" squares—(4) E-Pieced Block #13 and (4) B-Pieced Block #22



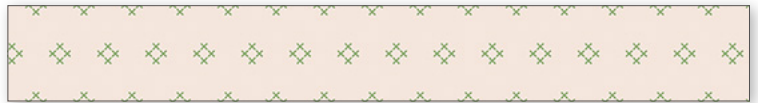
C14668-Latte Kerchief (½ yard)

Cut (1) 9 ½" × 11 ½" rectangle for Gloves Block
Cut (3) 4 ½" × 4 ½" squares—(1) for Apples Block and (2) for Leaves Block
Cut (32) 2 ½" × 2 ½" squares—(16) A-Pieced Block #10 and (16) A-Pieced Block #20



C14652-Latte Berries (⅝ yard)

Cut (1) 13 ½" × 33 ½" rectangle for Overalls Block
Cut (1) 4 ½" × 4 ½" square for Leaves Block
Cut (32) 2 ½" × 2 ½" squares—(16) A-Pieced Block #13 and (16) A-Pieced Block #21



C14658-Latte Stitch (⅝ yard)

Cut (1) 11 ½" × 13 ½" rectangle for Boots Block
Cut (1) 10 ½" × 16 ½" rectangle for Moon and Stars Block
Cut (1) 8 ½" × 16 ½" rectangle for Hat Block
Cut (1) 4 ½" × 4 ½" square for Leaves Block
Cut (32) 2 ½" × 2 ½" squares—(16) A-Pieced Block #3 and (16) A-Pieced Block #15



C14663-Latte Sprig (⅝ yard)

Cut (1) 10 ½" × 33 ½" rectangle for Corn Block
Cut (1) 9 ½" × 9 ½" square for Sunflower Block
Cut (2) 4 ½" × 4 ½" squares—(1) for Apples Block and (1) for Leaves Block
Cut (48) 2 ½" × 2 ½" squares—(16) A-Pieced Block #2, (16) A-Pieced Block #7, and (16) A-Pieced Block #17

How to Build a Scarecrow Sew Along Guide



C14667-Tea Dye Words (5/8 yard)

- Cut (1) 7 1/2" x 8 1/2" rectangle for Letter W Block
- Cut (1) 5" x 7" rectangle, use R-54 for Gunny Sack Block
- Cut (1) 5 3/4" x 7 3/4" rectangle, use R-39 for Tools Block
- Cut (6) 5 1/2" x 8 1/2" rectangles for Letter S, Letter C (2), Letter A, Letter E, and Letter O Blocks
- Cut (2) 4 1/2" x 8 1/2" rectangles for Letter R Block
- Cut (1) 2 1/2" x 4" rectangle, use R-8 for Letter O Block
- Cut (17) 2 1/2" x 2 1/2" squares—(4) B-Pieced Block #8, (4) B-Pieced Block #10, (4) B-Pieced Block #19, and (5) C-Pieced Block #22
- Cut (1) 1 3/4" x 2 1/4" rectangle, use R-9 for Letter E Block
- Cut (1) 1 3/4" x 1 3/4" square, use R-11 for Letter A Block



C14669-Latte Maple (5/8 yard)

- Cut (1) 16 1/2" x 21 1/2" rectangle for Shirt Block
- Cut (1) 10 1/2" x 10 1/2" square for Bandana Block
- Cut (1) 4 1/2" x 4 1/2" square for Leaves Block
- Cut (32) 2 1/2" x 2 1/2" squares—(16) A-Pieced Block #12 and (16) A-Pieced Block #19



C14668-Cider Kerchief (3/4 yard)

- Cut (9) 2 1/2" x WOF strips for binding
- Cut (8) 2 1/2" x 2 1/2" squares—(4) E-Pieced Block #14 and (4) E-Pieced Block #22



C14650-Latte Floral (2 1/2 yards)

- Cut (4) 2 1/2" x LOF* strips. Sew together end-to-end, then subcut:
 - (2) 2 1/2" x 82 1/2" Side Border D strips
 - (2) 2 1/2" x 74 1/2" Side Top/Bottom Border D strips
- Cut (4) 2" x LOF strips. Sew together end-to-end, then subcut:
 - (2) 2" x 59 1/2" Side Border B strips
 - (2) 2" x 50 1/2" Top/Bottom Border B strips
- From remaining fabric, cut (11) 2 1/2" x WOF strips; subcut:
 - (22) 2 1/2" x 10 1/2" sashing strips

Note: These strips are cut LOF, not WOF.



Cutting Guide for How to Build a Scarecrow Sew Simple Shapes

Use when cutting sew-in interfacing
for the How to Build a Scarecrow Sew Along



R-1
3 1/2" x 6"
Cut 1



R-2
4" x 6"
Cut 2



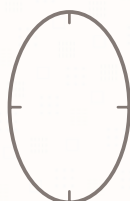
R-3
4" x 6"
Cut 1



R-4
3" x 6"
Cut 2



R-5
4" x 5 3/4"
Cut 1



R-6
4" x 6"
Cut 1



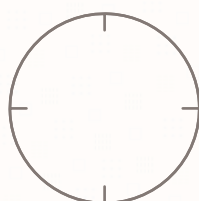
R-7
5 1/2" x 6"
Cut 1



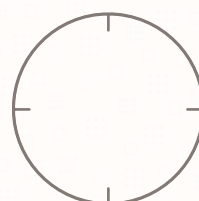
R-8
2 1/2" x 4"
Cut 1



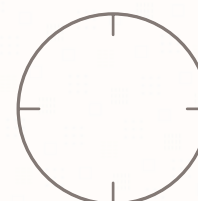
R-9
2 1/4" x 1 3/4"
Cut 1



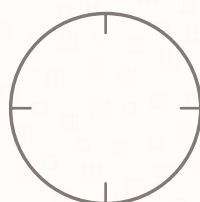
R-10
1 1/2" x 1 1/2"
Cut 1



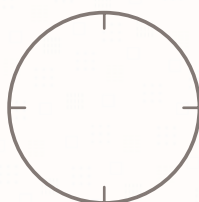
R-11
1 3/4" x 1 3/4"
Cut 1



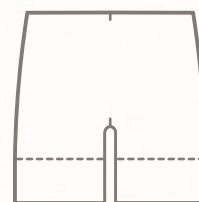
R-12
2" x 2"
Cut 2



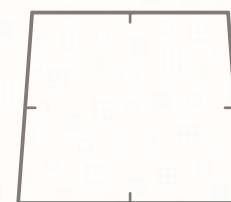
R-13
2 1/2" x 2 1/2"
Cut 1



R-14
4" x 4"
Cut 1



R-15*
9 1/4" x 18"
Cut 1



R-16
6 3/4" x 8"
Cut 1

*See Sew Simple Shape for specific cutting details.

Cutting Guide for How to Build a Scarecrow Sew Simple Shapes

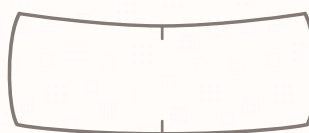
Use when cutting sew-in interfacing
for the How to Build a Scarecrow Sew Along



R-17
4 1/2" x 5 3/4"
Cut 1



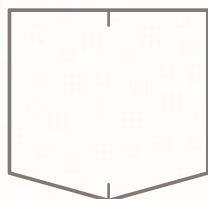
R-18
1 3/4" x 4 1/4"
Cut 2



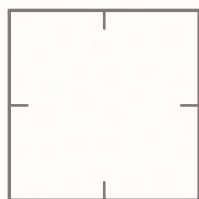
R-19
2 1/4" x 5"
Cut 2



R-20
1 3/4" x 8 1/4"
Cut 1



R-21
4 1/2" x 4 1/2"
Cut 1



R-22
2 3/4" x 2 3/4"
Cut 5



R-23*
7 3/4" x 18 1/2"
Cut 1



R-24*
2 3/4" x 14"
Cut 2



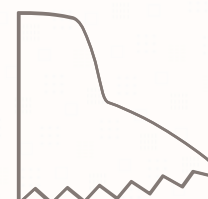
R-25
2 3/4" x 3 1/2"
Cut 2



R-26
3" x 4 1/4"
Cut 2



R-27
1 1/2" x 3 1/2"
Cut 1



R-28*
7" x 13 3/4"
Cut 1



R-29
2" x 7"
Cut 1



R-30
6 3/4" x 7 1/2"
Cut 2



R-31
2" x 4"
Cut 2



R-32*
3 3/4" x 5"
Cut 2

*See Sew Simple Shape for specific cutting details.

Cutting Guide for How to Build a Scarecrow Sew Simple Shapes

Use when cutting sew-in interfacing
for the How to Build a Scarecrow Sew Along



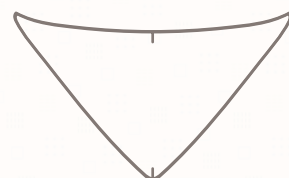
R-33
1 1/2" x 3 3/4"
Cut 2



R-34
1 1/2" x 2 1/4"
Cut 2



R-35
2" x 2 1/4"
Cut 1



R-36
5 3/4" x 9"
Cut 1



R-37
3 1/4" x 4 3/4"
Cut 2



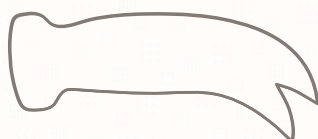
R-38
1 3/4" x 2 1/2"
Cut 2



R-39
5 3/4" x 7 3/4"
Cut 1



R-40
3 1/4" x 3 1/2"
Cut 1



R-41
2 1/4" x 5 1/4"
Cut 1



R-42
2" x 8 3/4"
Cut 1



R-43
5 1/4" x 10 1/2"
Cut 1



R-44
3 3/4" x 4 1/2"
Cut 2



R-45
3" x 3 1/2"
Cut 2



R-46
2 1/2" x 3"
Cut 2



R-47
4 1/2" x 9"
Cut 2



R-48
2 1/4" x 4 1/2"
Cut 2

Cutting Guide for How to Build a Scarecrow Sew Simple Shapes

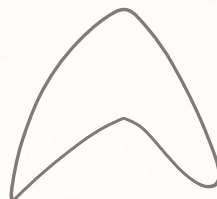
Use when cutting sew-in interfacing
for the How to Build a Scarecrow Sew Along



R-49*
2" x 18 1/4"
Cut 1



R-50
2 1/4" x 5"
Cut 3



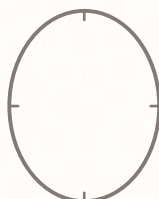
R-51
3 1/4" x 3 1/2"
Cut 7



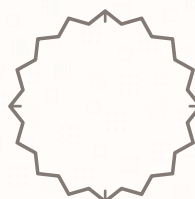
R-52
3 1/4" x 3 1/4"
Cut 7



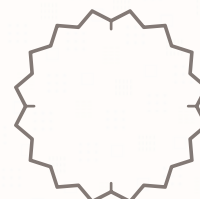
R-53
2 3/4" x 3"
Cut 12



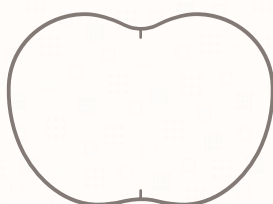
R-54
5" x 7"
Cut 1



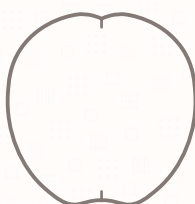
R-55
6 1/4" x 6 1/4"
Cut 1



R-56
7 1/2" x 7 1/2"
Cut 1



R-57
7 1/4" x 10"
Cut 1



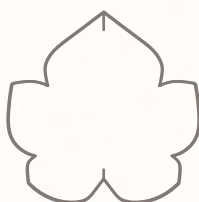
R-58
7" x 7"
Cut 1



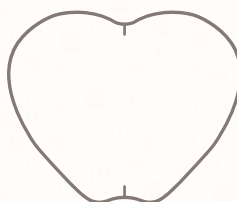
R-59
3 3/4" x 7 1/4"
Cut 1



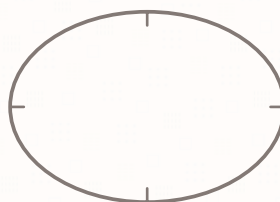
R-60
3" x 3 3/4"
Cut 1



R-61
3 3/4" x 3 3/4"
Cut 1



R-62
2 1/2" x 3"
Cut 5



R-63
6 1/4" x 8"
Bonus Shape!

*See Sew Simple Shape for specific cutting details.

Clover Bias Tape Makers

For $\frac{1}{4}$ "
Bias Tape Maker

...
Cut
 $\frac{5}{8}$ " Wide

For $\frac{1}{2}$ "
Bias Tape Maker

...
Cut
1" Wide

For $\frac{3}{4}$ "
Bias Tape Maker

...
Cut
1 $\frac{1}{4}$ " Wide

DMC Embroidery Floss

DMC Gray 646 Floss

Mouth

Nails

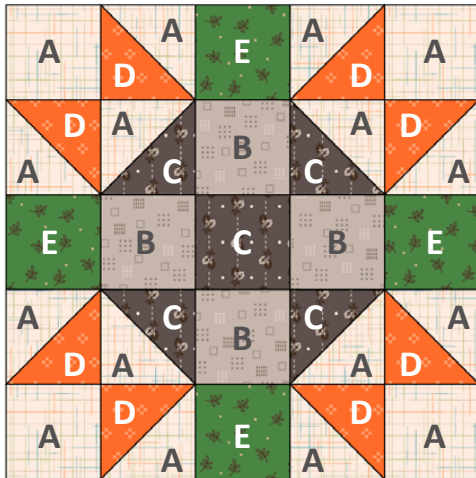
Gunny Sack Block

*When sewing on buttons, use matching embroidery floss from your stash or thread from the Honey Bee Essentials Aurifil Thread Box.



How to Build a Scarecrow Sew Along Guide

Pieced Block #1



Unfinished Block Size: 10 ½" × 10 ½"

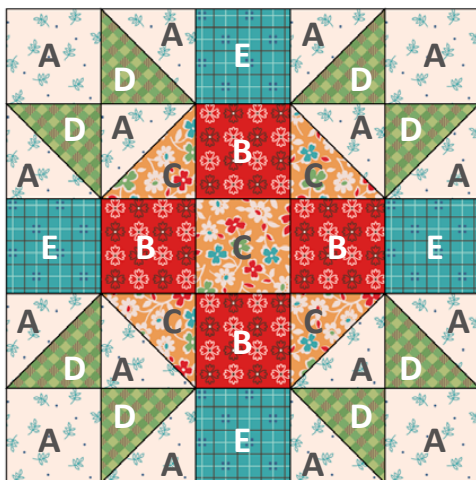
Fabrics Required:

- A-squares: (16) 2 ½" × 2 ½"—C14670-Latte Gunny Sack
- B-squares: (4) 2 ½" × 2 ½"—C14653-Pewter Squares
- C-squares: (5) 2 ½" × 2 ½"—C14662-Milk Can Leaves
- D-squares: (8) 2 ½" × 2 ½"—C14658-Autumn Stitch
- E-squares: (4) 2 ½" × 2 ½"—C14663-Clover Sprig

Other Materials Required:

- STCC-5534 Lori Holt Cute Cuts™ Trim-it™ Ruler 2 ½" × 2 ½"
- STCC-5536 Lori Holt Cute Cuts™ Trim-it™ Ruler 4 ½" × 4 ½"
- STTI-5531 Lori Holt Cute Cuts™ Trim-it™ Ruler 10 ½" × 10 ½"

Pieced Block #2



Unfinished Block Size: 10 ½" × 10 ½"

Fabrics Required:

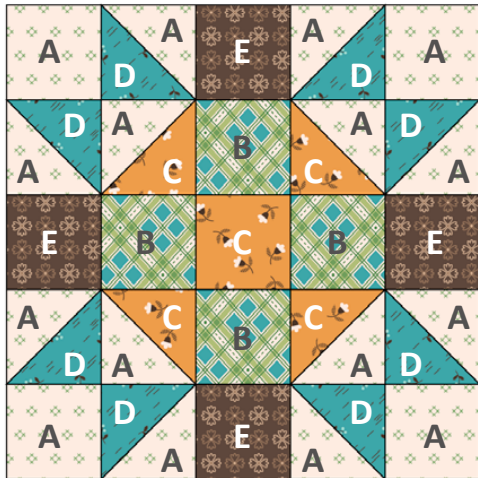
- A-squares: (16) 2 ½" × 2 ½"—C14663-Latte Sprig
- B-squares: (4) 2 ½" × 2 ½"—C14668-Schoolhouse Kerchief
- C-squares: (5) 2 ½" × 2 ½"—C14659-Cider Cosmos
- D-squares: (8) 2 ½" × 2 ½"—C14660-Basil Gingham
- E-squares: (4) 2 ½" × 2 ½"—C14661-Raindrop Homespun

Other Materials Required:

- STCC-5534 Lori Holt Cute Cuts™ Trim-it™ Ruler 2 ½" × 2 ½"
- STCC-5536 Lori Holt Cute Cuts™ Trim-it™ Ruler 4 ½" × 4 ½"
- STTI-5531 Lori Holt Cute Cuts™ Trim-it™ Ruler 10 ½" × 10 ½"

How to Build a Scarecrow Sew Along Guide

Pieced Block #3



Unfinished Block Size: 10 ½" × 10 ½"

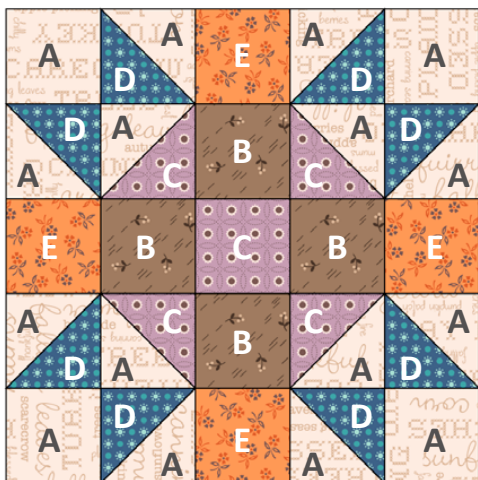
Fabrics Required:

- A-squares: (16) 2 ½" × 2 ½"—C14658-Latte Stitch
- B-squares: (4) 2 ½" × 2 ½"—C14651-Lettuce Plaid
- C-squares: (5) 2 ½" × 2 ½"—C14654-Cider Blossom
- D-squares: (8) 2 ½" × 2 ½"—C14652-Raindrop Berries
- E-squares: (4) 2 ½" × 2 ½"—C14668-Raisin Kerchief

Other Materials Required:

- STCC-5534 Lori Holt Cute Cuts™ Trim-it™ Ruler 2 ½" × 2 ½"
- STCC-5536 Lori Holt Cute Cuts™ Trim-it™ Ruler 4 ½" × 4 ½"
- STTI-5531 Lori Holt Cute Cuts™ Trim-it™ Ruler 10 ½" × 10 ½"

Pieced Block #4



Unfinished Block Size: 10 ½" × 10 ½"

Fabrics Required:

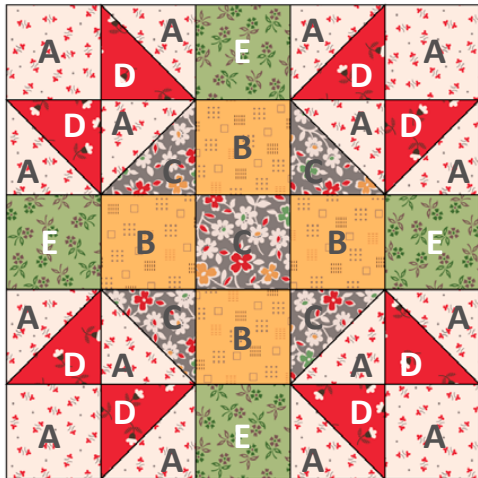
- A-squares: (16) 2 ½" × 2 ½"—C14667-Latte Words
- B-squares: (4) 2 ½" × 2 ½"—C14652-Chestnut Berries
- C-squares: (5) 2 ½" × 2 ½"—C14666-Taffy Sunflowers
- D-squares: (8) 2 ½" × 2 ½"—C14657-Denim Dots
- E-squares: (4) 2 ½" × 2 ½"—C14664-Yam Perennial

Other Materials Required:

- STCC-5534 Lori Holt Cute Cuts™ Trim-it™ Ruler 2 ½" × 2 ½"
- STCC-5536 Lori Holt Cute Cuts™ Trim-it™ Ruler 4 ½" × 4 ½"
- STTI-5531 Lori Holt Cute Cuts™ Trim-it™ Ruler 10 ½" × 10 ½"

How to Build a Scarecrow Sew Along Guide

Pieced Block #5



Unfinished Block Size: 10 ½" × 10 ½"

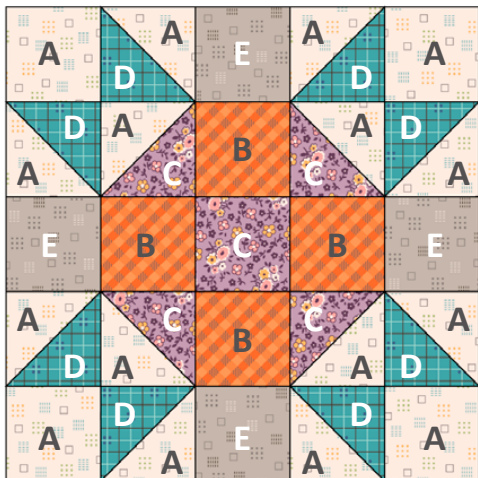
Fabrics Required:

- A-squares: (16) 2 ½" × 2 ½"—C14655-Latte Posy
- B-squares: (4) 2 ½" × 2 ½"—C14653-Marigold Squares
- C-squares: (5) 2 ½" × 2 ½"—C14659-Milk Can Cosmos
- D-squares: (8) 2 ½" × 2 ½"—C14654-Riley Red Blossom
- E-squares: (4) 2 ½" × 2 ½"—C14664-Lettuce Perennial

Other Materials Required:

- STCC-5534 Lori Holt Cute Cuts™ Trim-it™ Ruler 2 ½" × 2 ½"
- STCC-5536 Lori Holt Cute Cuts™ Trim-it™ Ruler 4 ½" × 4 ½"
- STTI-5531 Lori Holt Cute Cuts™ Trim-it™ Ruler 10 ½" × 10 ½"

Pieced Block #6



Unfinished Block Size: 10 ½" × 10 ½"

Fabrics Required:

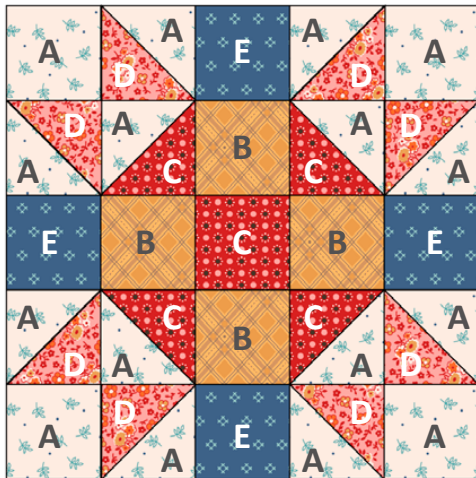
- A-squares: (16) 2 ½" × 2 ½"—C14653-Latte Squares
- B-squares: (4) 2 ½" × 2 ½"—C14660-Pumpkin Gingham
- C-squares: (5) 2 ½" × 2 ½"—C14656-Plum Bouquet
- D-squares: (8) 2 ½" × 2 ½"—C14661-Raindrop Homespun
- E-squares: (4) 2 ½" × 2 ½"—C14653-Pewter Squares

Other Materials Required:

- STCC-5534 Lori Holt Cute Cuts™ Trim-it™ Ruler 2 ½" × 2 ½"
- STCC-5536 Lori Holt Cute Cuts™ Trim-it™ Ruler 4 ½" × 4 ½"
- STTI-5531 Lori Holt Cute Cuts™ Trim-it™ Ruler 10 ½" × 10 ½"

How to Build a Scarecrow Sew Along Guide

Pieced Block #7



Unfinished Block Size: 10 ½" × 10 ½"

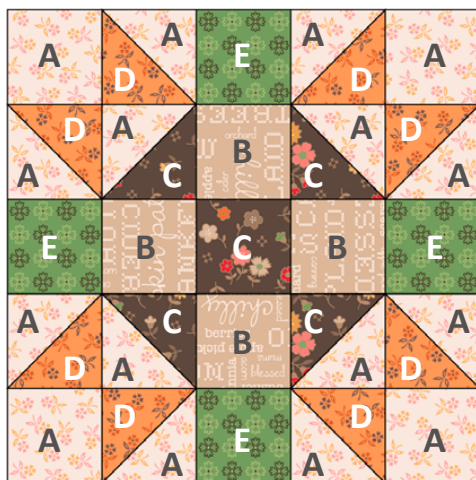
Fabrics Required:

- A-squares: (16) 2 ½" × 2 ½"—C14663-Latte Sprig
- B-squares: (4) 2 ½" × 2 ½"—C14651-Marigold Plaid
- C-squares: (5) 2 ½" × 2 ½"—C14657-Schoolhouse Dots
- D-squares: (8) 2 ½" × 2 ½"—C14656-Coral Bouquet
- E-squares: (4) 2 ½" × 2 ½"—C14658-Denim Stitch

Other Materials Required:

- STCC-5534 Lori Holt Cute Cuts™ Trim-it™ Ruler 2 ½" × 2 ½"
- STCC-5536 Lori Holt Cute Cuts™ Trim-it™ Ruler 4 ½" × 4 ½"
- STTI-5531 Lori Holt Cute Cuts™ Trim-it™ Ruler 10 ½" × 10 ½"

Pieced Block #8



Unfinished Block Size: 10 ½" × 10 ½"

Fabrics Required:

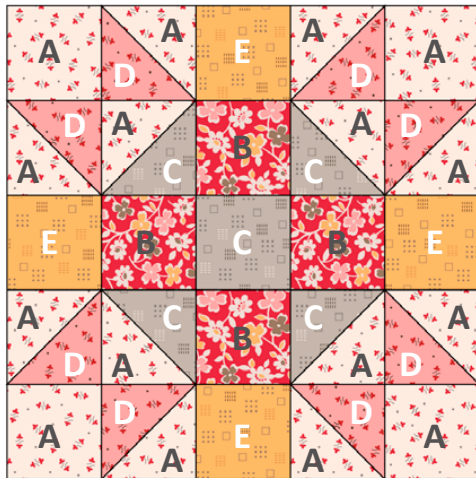
- A-squares: (16) 2 ½" × 2 ½"—C14664-Latte Perennial
- B-squares: (4) 2 ½" × 2 ½"—C14667-Tea Dye Words
- C-squares: (5) 2 ½" × 2 ½"—C14650-Raisin Floral
- D-squares: (8) 2 ½" × 2 ½"—C14664-Yam Perennial
- E-squares: (4) 2 ½" × 2 ½"—C14668-Basil Kerchief

Other Materials Required:

- STCC-5534 Lori Holt Cute Cuts™ Trim-it™ Ruler 2 ½" × 2 ½"
- STCC-5536 Lori Holt Cute Cuts™ Trim-it™ Ruler 4 ½" × 4 ½"
- STTI-5531 Lori Holt Cute Cuts™ Trim-it™ Ruler 10 ½" × 10 ½"

How to Build a Scarecrow Sew Along Guide

Pieced Block #9



Unfinished Block Size: 10 ½" × 10 ½"

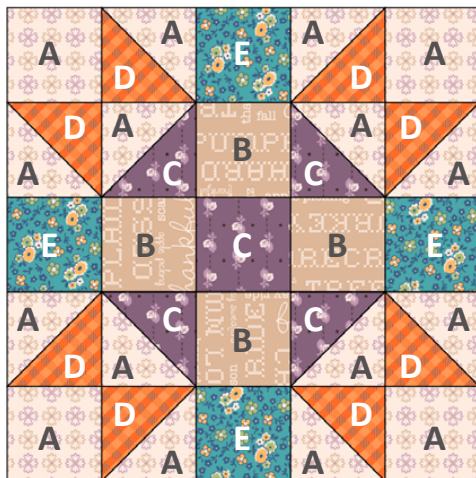
Fabrics Required:

- A-squares: (16) 2 ½" × 2 ½"—C14655-Latte Posy
- B-squares: (4) 2 ½" × 2 ½"—C14659-Riley Red Cosmos
- C-squares: (5) 2 ½" × 2 ½"—C14653-Pewter Squares
- D-squares: (8) 2 ½" × 2 ½"—C14655-Coral Posy
- E-squares: (4) 2 ½" × 2 ½"—C14653-Marigold Squares

Other Materials Required:

- STCC-5534 Lori Holt Cute Cuts™ Trim-it™ Ruler 2 ½" × 2 ½"
- STCC-5536 Lori Holt Cute Cuts™ Trim-it™ Ruler 4 ½" × 4 ½"
- STTI-5531 Lori Holt Cute Cuts™ Trim-it™ Ruler 10 ½" × 10 ½"

Pieced Block #10



Unfinished Block Size: 10 ½" × 10 ½"

Fabrics Required:

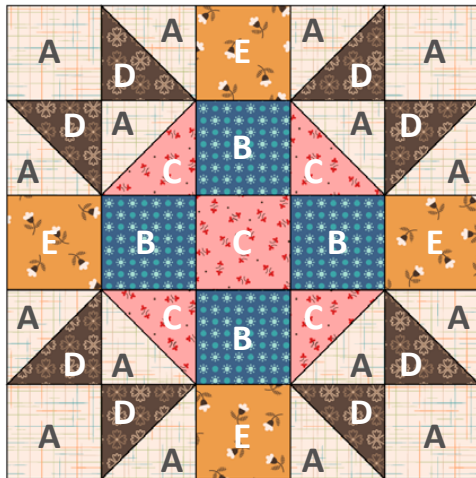
- A-squares: (16) 2 ½" × 2 ½"—C14668-Latte Kerchief
- B-squares: (4) 2 ½" × 2 ½"—C14667-Tea Dye Words
- C-squares: (5) 2 ½" × 2 ½"—C14662-Plum Leaves
- D-squares: (8) 2 ½" × 2 ½"—C14660-Pumpkin Gingham
- E-squares: (4) 2 ½" × 2 ½"—C14656-Raindrop Bouquet

Other Materials Required:

- STCC-5534 Lori Holt Cute Cuts™ Trim-it™ Ruler 2 ½" × 2 ½"
- STCC-5536 Lori Holt Cute Cuts™ Trim-it™ Ruler 4 ½" × 4 ½"
- STTI-5531 Lori Holt Cute Cuts™ Trim-it™ Ruler 10 ½" × 10 ½"

How to Build a Scarecrow Sew Along Guide

Pieced Block #11



Unfinished Block Size: 10 ½" × 10 ½"

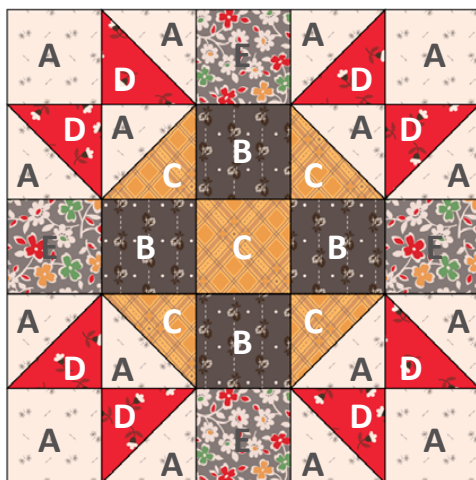
Fabrics Required:

- A-squares: (16) 2 ½" × 2 ½"—C14670-Latte Gunny Sack
- B-squares: (4) 2 ½" × 2 ½"—C14657-Denim Dots
- C-squares: (5) 2 ½" × 2 ½"—C14655-Coral Posy
- D-squares: (8) 2 ½" × 2 ½"—C14668-Raisin Kerchief
- E-squares: (4) 2 ½" × 2 ½"—C14654-Cider Blossom

Other Materials Required:

- STCC-5534 Lori Holt Cute Cuts™ Trim-it™ Ruler 2 ½" × 2 ½"
- STCC-5536 Lori Holt Cute Cuts™ Trim-it™ Ruler 4 ½" × 4 ½"
- STTI-5531 Lori Holt Cute Cuts™ Trim-it™ Ruler 10 ½" × 10 ½"

Pieced Block #12



Unfinished Block Size: 10 ½" × 10 ½"

Fabrics Required:

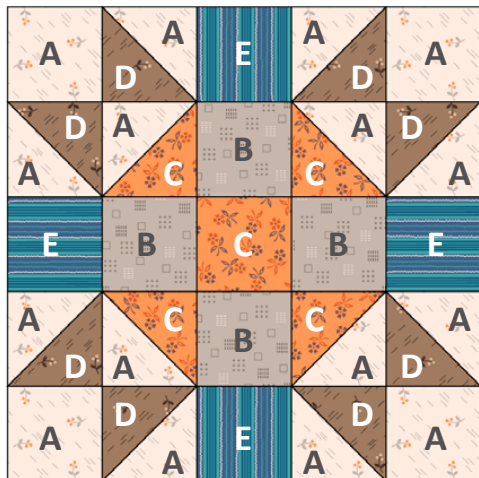
- A-squares: (16) 2 ½" × 2 ½"—C14669-Latte Maple
- B-squares: (4) 2 ½" × 2 ½"—C14662-Milk Can Leaves
- C-squares: (5) 2 ½" × 2 ½"—C14651-Marigold Plaid
- D-squares: (8) 2 ½" × 2 ½"—C14654-Riley Red Blossom
- E-squares: (4) 2 ½" × 2 ½"—C14659-Milk Can Cosmos

Other Materials Required:

- STCC-5534 Lori Holt Cute Cuts™ Trim-it™ Ruler 2 ½" × 2 ½"
- STCC-5536 Lori Holt Cute Cuts™ Trim-it™ Ruler 4 ½" × 4 ½"
- STTI-5531 Lori Holt Cute Cuts™ Trim-it™ Ruler 10 ½" × 10 ½"

How to Build a Scarecrow Sew Along Guide

Pieced Block #13



Unfinished Block Size: 10 ½" × 10 ½"

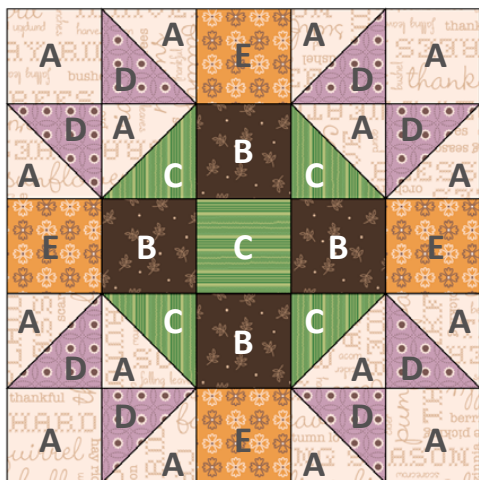
Fabrics Required:

- A-squares: (16) 2 ½" × 2 ½"—C14652-Latte Berries
- B-squares: (4) 2 ½" × 2 ½"—C14653-Pewter Squares
- C-squares: (5) 2 ½" × 2 ½"—C14664-Yam Perennial
- D-squares: (8) 2 ½" × 2 ½"—C14652-Chestnut Berries
- E-squares: (4) 2 ½" × 2 ½"—C14665-Denim Stripe

Other Materials Required:

- STCC-5534 Lori Holt Cute Cuts™ Trim-it™ Ruler 2 ½" × 2 ½"
- STCC-5536 Lori Holt Cute Cuts™ Trim-it™ Ruler 4 ½" × 4 ½"
- STTI-5531 Lori Holt Cute Cuts™ Trim-it™ Ruler 10 ½" × 10 ½"

Pieced Block #14



Unfinished Block Size: 10 ½" × 10 ½"

Fabrics Required:

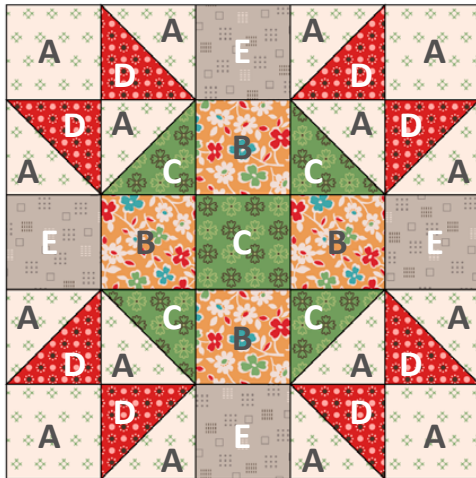
- A-squares: (16) 2 ½" × 2 ½"—C14667-Latte Words
- B-squares: (4) 2 ½" × 2 ½"—C14663-Raisin Sprig
- C-squares: (5) 2 ½" × 2 ½"—C14665-Basil Stripe
- D-squares: (8) 2 ½" × 2 ½"—C14666-Taffy Sunflowers
- E-squares: (4) 2 ½" × 2 ½"—C14668-Cider Kerchief

Other Materials Required:

- STCC-5534 Lori Holt Cute Cuts™ Trim-it™ Ruler 2 ½" × 2 ½"
- STCC-5536 Lori Holt Cute Cuts™ Trim-it™ Ruler 4 ½" × 4 ½"
- STTI-5531 Lori Holt Cute Cuts™ Trim-it™ Ruler 10 ½" × 10 ½"

How to Build a Scarecrow Sew Along Guide

Pieced Block #15



Unfinished Block Size: 10 ½" × 10 ½"

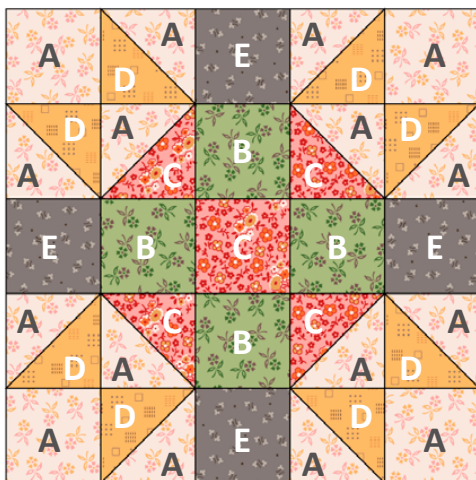
Fabrics Required:

- A-squares: (16) 2 ½" × 2 ½"—C14658-Latte Stitch
- B-squares: (4) 2 ½" × 2 ½"—C14659-Cider Cosmos
- C-squares: (5) 2 ½" × 2 ½"—C14668-Basil Kerchief
- D-squares: (8) 2 ½" × 2 ½"—C14657-Schoolhouse Dots
- E-squares: (4) 2 ½" × 2 ½"—C14653-Pewter Squares

Other Materials Required:

- STCC-5534 Lori Holt Cute Cuts™ Trim-it™ Ruler 2 ½" × 2 ½"
- STCC-5536 Lori Holt Cute Cuts™ Trim-it™ Ruler 4 ½" × 4 ½"
- STTI-5531 Lori Holt Cute Cuts™ Trim-it™ Ruler 10 ½" × 10 ½"

Pieced Block #16



Unfinished Block Size: 10 ½" × 10 ½"

Fabrics Required:

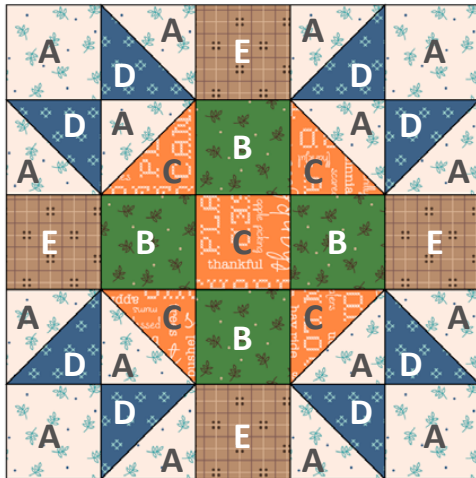
- A-squares: (16) 2 ½" × 2 ½"—C14664-Latte Perennial
- B-squares: (4) 2 ½" × 2 ½"—C14664-Lettuce Perennial
- C-squares: (5) 2 ½" × 2 ½"—C14656-Coral Bouquet
- D-squares: (8) 2 ½" × 2 ½"—C14653-Marigold Squares
- E-squares: (4) 2 ½" × 2 ½"—C14655-Milk Can Posy

Other Materials Required:

- STCC-5534 Lori Holt Cute Cuts™ Trim-it™ Ruler 2 ½" × 2 ½"
- STCC-5536 Lori Holt Cute Cuts™ Trim-it™ Ruler 4 ½" × 4 ½"
- STTI-5531 Lori Holt Cute Cuts™ Trim-it™ Ruler 10 ½" × 10 ½"

How to Build a Scarecrow Sew Along Guide

Pieced Block #17



Unfinished Block Size: 10 ½" × 10 ½"

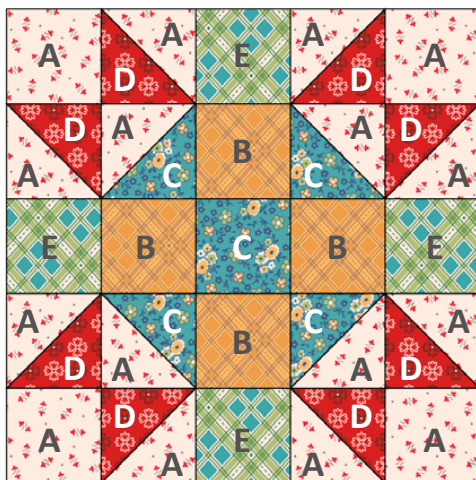
Fabrics Required:

- A-squares: (16) 2 ½" × 2 ½"—C14663-Latte Sprig
- B-squares: (4) 2 ½" × 2 ½"—C14663-Clover Sprig
- C-squares: (5) 2 ½" × 2 ½"—C14667-Pumpkin Words
- D-squares: (8) 2 ½" × 2 ½"—C14658-Denim Stitch
- E-squares: (4) 2 ½" × 2 ½"—C14661-Brown Homespun

Other Materials Required:

- STCC-5534 Lori Holt Cute Cuts™ Trim-it™ Ruler 2 ½" × 2 ½"
- STCC-5536 Lori Holt Cute Cuts™ Trim-it™ Ruler 4 ½" × 4 ½"
- STTI-5531 Lori Holt Cute Cuts™ Trim-it™ Ruler 10 ½" × 10 ½"

Pieced Block #18



Unfinished Block Size: 10 ½" × 10 ½"

Fabrics Required:

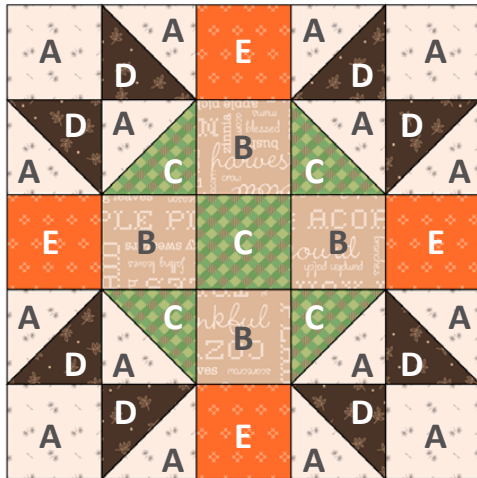
- A-squares: (16) 2 ½" × 2 ½"—C14655-Latte Posy
- B-squares: (4) 2 ½" × 2 ½"—C14651-Marigold Plaid
- C-squares: (5) 2 ½" × 2 ½"—C14656-Raindrop Bouquet
- D-squares: (8) 2 ½" × 2 ½"—C14668-Schoolhouse Kerchief
- E-squares: (4) 2 ½" × 2 ½"—C14651-Lettuce Plaid

Other Materials Required:

- STCC-5534 Lori Holt Cute Cuts™ Trim-it™ Ruler 2 ½" × 2 ½"
- STCC-5536 Lori Holt Cute Cuts™ Trim-it™ Ruler 4 ½" × 4 ½"
- STTI-5531 Lori Holt Cute Cuts™ Trim-it™ Ruler 10 ½" × 10 ½"

How to Build a Scarecrow Sew Along Guide

Pieced Block #19



Unfinished Block Size: 10 ½" × 10 ½"

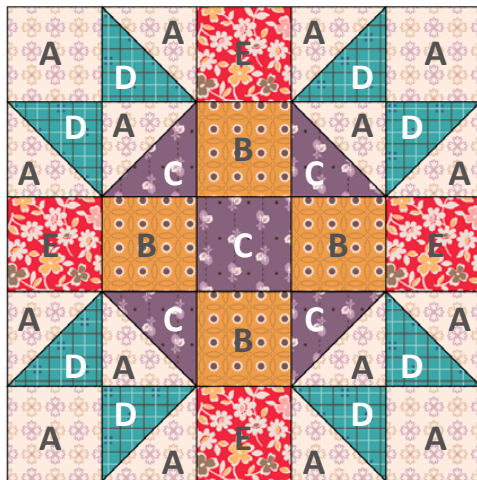
Fabrics Required:

- A-squares: (16) 2 ½" × 2 ½"—C14669-Latte Maple
- B-squares: (4) 2 ½" × 2 ½"—C14667-Tea Dye Words
- C-squares: (5) 2 ½" × 2 ½"—C14660-Basil Gingham
- D-squares: (8) 2 ½" × 2 ½"—C14663-Raisin Sprig
- E-squares: (4) 2 ½" × 2 ½"—C14658-Autumn Stitch

Other Materials Required:

- STCC-5534 Lori Holt Cute Cuts™ Trim-it™ Ruler 2 ½" × 2 ½"
- STCC-5536 Lori Holt Cute Cuts™ Trim-it™ Ruler 4 ½" × 4 ½"
- STTI-5531 Lori Holt Cute Cuts™ Trim-it™ Ruler 10 ½" × 10 ½"

Pieced Block #20



Unfinished Block Size: 10 ½" × 10 ½"

Fabrics Required:

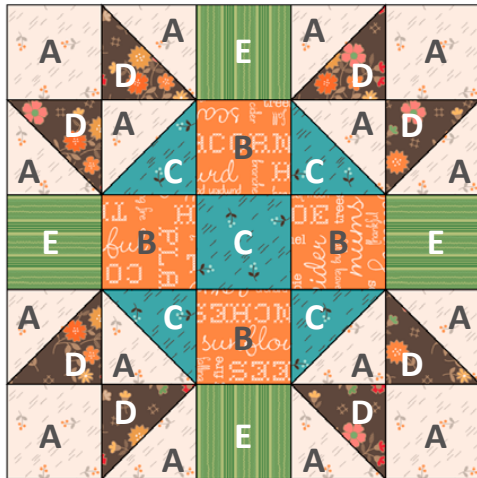
- A-squares: (16) 2 ½" × 2 ½"—C14668-Latte Kerchief
- B-squares: (4) 2 ½" × 2 ½"—C14666-Cider Sunflowers
- C-squares: (5) 2 ½" × 2 ½"—C14662-Plum Leaves
- D-squares: (8) 2 ½" × 2 ½"—C14661-Raindrop Homespun
- E-squares: (4) 2 ½" × 2 ½"—C14659-Riley Red Cosmos

Other Materials Required:

- STCC-5534 Lori Holt Cute Cuts™ Trim-it™ Ruler 2 ½" × 2 ½"
- STCC-5536 Lori Holt Cute Cuts™ Trim-it™ Ruler 4 ½" × 4 ½"
- STTI-5531 Lori Holt Cute Cuts™ Trim-it™ Ruler 10 ½" × 10 ½"

How to Build a Scarecrow Sew Along Guide

Pieced Block #21



Unfinished Block Size: 10 ½" × 10 ½"

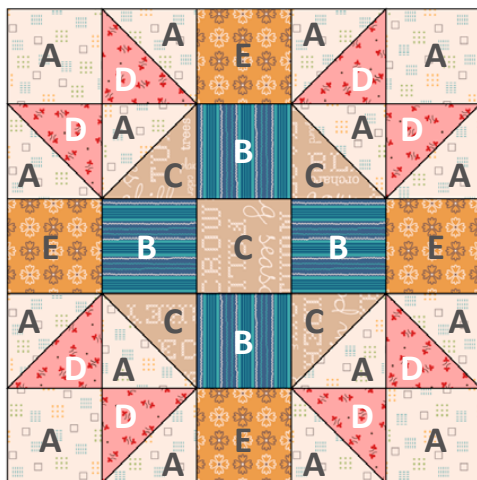
Fabrics Required:

- A-squares: (16) 2 ½" × 2 ½"—C14652-Latte Berries
- B-squares: (4) 2 ½" × 2 ½"—C14667-Pumpkin Words
- C-squares: (5) 2 ½" × 2 ½"—C14652-Raindrop Berries
- D-squares: (8) 2 ½" × 2 ½"—C14650-Raisin Floral
- E-squares: (4) 2 ½" × 2 ½"—C14665-Basil Stripe

Other Materials Required:

- STCC-5534 Lori Holt Cute Cuts™ Trim-it™ Ruler 2 ½" × 2 ½"
- STCC-5536 Lori Holt Cute Cuts™ Trim-it™ Ruler 4 ½" × 4 ½"
- STTI-5531 Lori Holt Cute Cuts™ Trim-it™ Ruler 10 ½" × 10 ½"

Pieced Block #22



Unfinished Block Size: 10 ½" × 10 ½"

Fabrics Required:

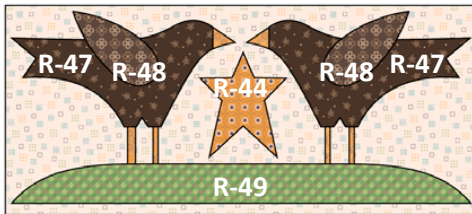
- A-squares: (16) 2 ½" × 2 ½"—C14653-Latte Squares
- B-squares: (4) 2 ½" × 2 ½"—C14665-Denim Stripe
- C-squares: (5) 2 ½" × 2 ½"—C14667-Tea Dye Words
- D-squares: (8) 2 ½" × 2 ½"—C14655-Coral Posy
- E-squares: (4) 2 ½" × 2 ½"—C14668-Cider Kerchief

Other Materials Required:

- STCC-5534 Lori Holt Cute Cuts™ Trim-it™ Ruler 2 ½" × 2 ½"
- STCC-5536 Lori Holt Cute Cuts™ Trim-it™ Ruler 4 ½" × 4 ½"
- STTI-5531 Lori Holt Cute Cuts™ Trim-it™ Ruler 10 ½" × 10 ½"

How to Build a Scarecrow Sew Along Guide

Crow Block



Unfinished Block Size: 8 ½" × 18 ½"

Fabrics Required:

- (4) ⅝" × 4" strips; use bias tape maker to make ¼" Straight Bias—C14651-Marigold Plaid
- (2) 1 ½" × 1 ½"—C14651-Marigold Plaid
- (1) 2" × 18 ¼"—C14660-Basil Gingham
- (2) 2 ¼" × 4 ½"—C14668-Raisin Kerchief
- (1) 3 ¾" × 4 ½"—C14666-Cider Sunflowers
- (2) 4 ½" × 8 ¼"—C14663-Raisin Sprig
- (1) 9 ½" × 19 ½"—C14653-Latte Squares

Cut From Interfacing:

- (1) 2" × 18 ¼", use Sew Simple Shape R-49
- (2) 2 ¼" × 4 ½", use Sew Simple Shape R-48
- (1) 3 ¾" × 4 ½", use Sew Simple Shape R-44
- (2) 4 ½" × 9", use Sew Simple Shape R-47 after piecing

Other Materials Required:

- STTI-5529 Lori Holt Cute Cuts™ Trim-it™ Ruler 8 ½" × 8 ½"
- STTI-5555 Lori Holt Cute Cuts™ Trim-it™ Ruler 18 ½" × 18 ½"

Moon and Stars Block



Unfinished Block Size: 9 ½" × 15 ½"

Fabrics Required:

- (1) 5 ¼" × 10 ½"—C14654-Cider Blossom
- (1) 3 ¾" × 4 ½"—C14651-Marigold Plaid
- (1) 3" × 3 ½"—C14651-Marigold Plaid
- (1) 3" × 3 ½"—C14653-Marigold Squares
- (2) 2 ½" × 3"—C14653-Marigold Squares
- (1) 10 ½" × 16 ½"—C14658-Latte Stitch

Cut From Interfacing:

- (1) 5 ¼" × 10 ½", use Sew Simple Shape R-43
- (1) 3 ¾" × 4 ½", use Sew Simple Shape R-44
- (2) 3" × 3 ½", use Sew Simple Shape R-45
- (2) 2 ½" × 3", use Sew Simple Shape R-46

Other Materials Required:

- STTI-5530 Lori Holt Cute Cuts™ Trim-it™ Ruler 9 ½" × 9 ½"
- STTI-22276 Lori Holt Cute Cuts™ Trim-it™ Ruler 15 ½" × 15 ½"

How to Build a Scarecrow Sew Along Guide

Gloves Block



Unfinished Block Size: 8 ½" × 10 ½"

Fabrics Required:

- (2) 1 ½" × 2 ¼"—C14668-Basil Kerchief
- (2) 1 ½" × 3 ¾"—C14664-Lettuce Perennial
- (2) 3 ¼" × 5"—C14664-Lettuce Perennial
- (1) 9 ½" × 11 ½"—C14668-Latte Kerchief

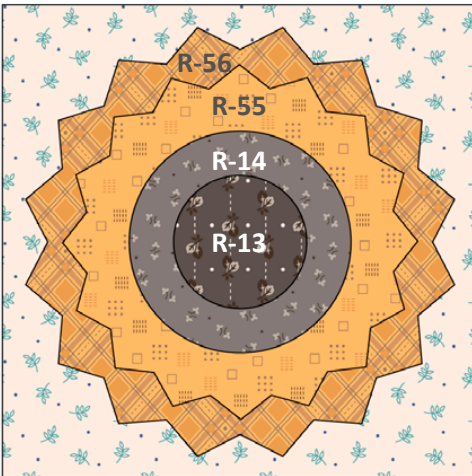
Cut From Interfacing:

- (2) 1 ½" × 2 ¼", use Sew Simple Shape R-34
- (2) 1 ½" × 3 ¾", use Sew Simple Shape R-33 (1 reverse)
- (2) 3 ¼" × 5", use Sew Simple Shape R-32 (1 reverse)

Other Materials Required:

- STTI-5529 Lori Holt Cute Cuts™ Trim-it™ Ruler 8 ½" × 8 ½"
- STTI-5531 Lori Holt Cute Cuts™ Trim-it™ Ruler 10 ½" × 10 ½"

Sunflower Block



Unfinished Block Size: 8 ½" × 8 ½"

Fabrics Required:

- (1) 2 ½" × 2 ½"—C14662-Milk Can Leaves
- (1) 4" × 4"—C14655-Milk Can Posy
- (1) 6 ¼" × 6 ¼"—C14653-Marigold Squares
- (1) 7 ½" × 7 ½"—C14651-Marigold Plaid
- (1) 9 ½" × 9 ½"—C14663-Latte Sprig

Cut From Interfacing:

- (1) 2 ½" × 2 ½", use Sew Simple Shape R-13
- (1) 4" × 4", use Sew Simple Shape R-14
- (1) 6 ¼" × 6 ¼", use Sew Simple Shape R-55
- (1) 7 ½" × 7 ½", use Sew Simple Shape R-56

Other Materials Required:

- STTI-5529 Lori Holt Cute Cuts™ Trim-it™ Ruler 8 ½" × 8 ½"

How to Build a Scarecrow Sew Along Guide

Letter S Block



Unfinished Block Size: 4 ½" × 7 ½"

Fabrics Required:

- (1) 3 ½" × 6"—C14657-Denim Dots
- (1) 5 ½" × 8 ½"—C14667-Tea Dye Words

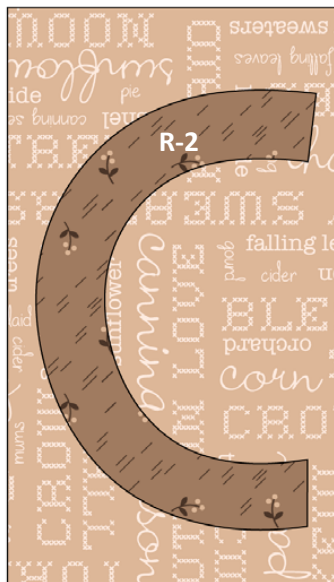
Cut From Interfacing:

- (1) 3 ½" × 6", use Sew Simple Shape R-1

Other Materials Required:

- STCC-5536 Lori Holt Cute Cuts™ Trim-it™ Ruler 4 ½" × 4 ½"
- STTI-21863 Lori Holt Cute Cuts™ Trim-it™ Ruler 7 ½" × 7 ½"

Letter C Block



Unfinished Block Size: 4 ½" × 7 ½"

Fabrics Required:

- (1) 4" × 6"—C14652-Chestnut Berries
- (1) 5 ½" × 8 ½"—C14667-Tea Dye Words

Cut From Interfacing:

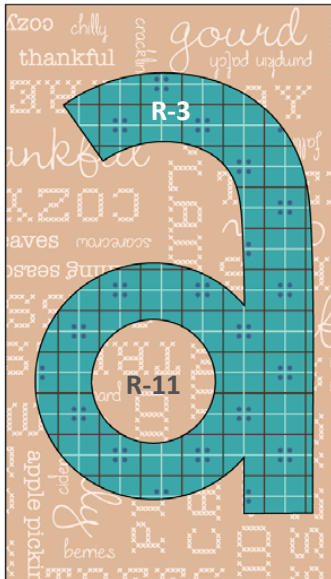
- 4" × 6", use Sew Simple Shape R-2

Other Materials Required:

- STCC-5536 Lori Holt Cute Cuts™ Trim-it™ Ruler 4 ½" × 4 ½"
- STTI-21863 Lori Holt Cute Cuts™ Trim-it™ Ruler 7 ½" × 7 ½"

How to Build a Scarecrow Sew Along Guide

Letter A Block



Unfinished Block Size: 4 ½" × 7 ½"

Fabrics Required:

- (1) 1 ¾" × 1 ¾" —C14667-Tea Dye Words
- (1) 5 ½" × 8 ½" —C14667-Tea Dye Words
- (1) 4" × 6" —C14661-Raindrop Homespun

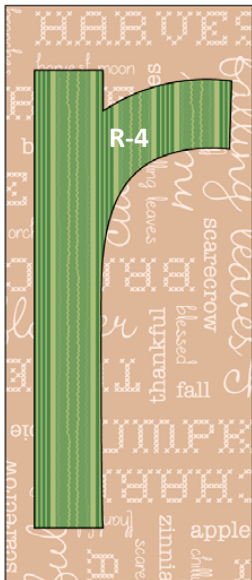
Cut From Interfacing:

- (1) 1 ¾" × 1 ¾", use Sew Simple Shape R-11
- (1) 4" × 6", use Sew Simple Shape R-3

Other Materials Required:

- STCC-5536 Lori Holt Cute Cuts™ Trim-it™ Ruler 4 ½" × 4 ½"
- STTI-21863 Lori Holt Cute Cuts™ Trim-it™ Ruler 7 ½" × 7 ½"

Letter R Block



Unfinished Block Size: 3 ½" × 7 ½"

Fabrics Required:

- (1) 3" × 6" —C14665-Basil Stripe
- (1) 4 ½" × 8 ½" —C14667-Tea Dye Words

Cut From Interfacing:

- (1) 3" × 6", use Sew Simple Shape R-4

Other Materials Required:

- STTI-5525 Lori Holt Cute Cuts™ Trim-it™ Ruler 3 ½" × 3 ½"
- STTI-21863 Lori Holt Cute Cuts™ Trim-it™ Ruler 7 ½" × 7 ½"

How to Build a Scarecrow Sew Along Guide

Letter E Block



Unfinished Block Size: 4 ½" × 7 ½"

Fabrics Required:

- (1) 1 ¾" × 2 ¼"—C14667-Tea Dye Words
- (1) 5 ½" × 8 ½"—C14667-Tea Dye Words
- (1) 4" × 5 ¾"—C14657-Schoolhouse Dots

Cut From Interfacing:

- (1) 1 ¾" × 2 ¼", use Sew Simple Shape R-9
- (1) 4" × 5 ¾", use Sew Simple Shape R-5

Other Materials Required:

- STCC-5536 Lori Holt Cute Cuts™ Trim-it™ Ruler 4 ½" × 4 ½"
- STTI-21863 Lori Holt Cute Cuts™ Trim-it™ Ruler 7 ½" × 7 ½"

Letter C Block



Unfinished Block Size: 4 ½" × 7 ½"

Fabrics Required:

- (1) 4" × 6"—C14655-Milk Can Posy
- (1) 5 ½" × 8 ½"—C14667-Tea Dye Words

Cut From Interfacing:

- (1) 4" × 6", use Sew Simple Shape R-2

Other Materials Required:

- STCC-5536 Lori Holt Cute Cuts™ Trim-it™ Ruler 4 ½" × 4 ½"
- STTI-21863 Lori Holt Cute Cuts™ Trim-it™ Ruler 7 ½" × 7 ½"

How to Build a Scarecrow Sew Along Guide

Letter W Block



Unfinished Block Size: 6 ½" × 7 ½"

Fabrics Required:

- (1) 5 ½" × 6"—C14652-Raindrop Berries
- (1) 7 ½" × 8 ½"—C14667-Tea Dye Words

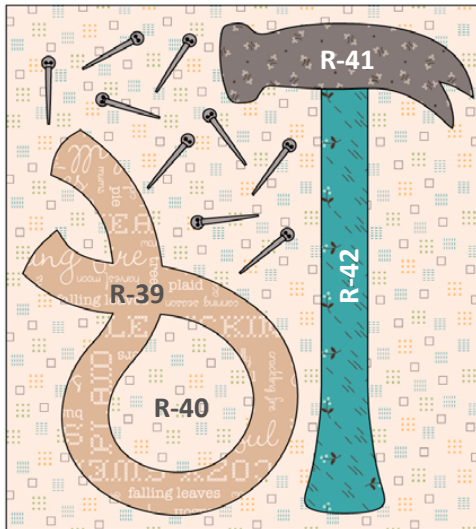
Cut From Interfacing:

- (1) 5 ½" × 6", use Sew Simple Shape R-7

Other Materials Required:

- STTI-21863 Lori Holt Cute Cuts™ Trim-it™ Ruler 7 ½" × 7 ½"

Tools Block



Unfinished Block Size: 9 ½" × 10 ½"

Fabrics Required:

- (1) 2" × 8 ¾"—C14652-Raindrop Berries
- (1) 2 ¼" × 5 ¼"—C14655-Milk Can Posy
- (1) 3 ¼" × 3 ½"—C14653-Latte Squares
- (1) 10 ½" × 11 ½"—C14653-Latte Squares
- (1) 5 ¾" × 7 ¾"—C14667-Tea Dye Words

Cut From Interfacing:

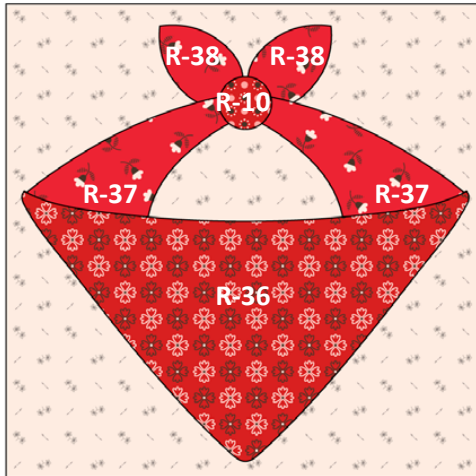
- (1) 2" × 8 ¾", use Sew Simple Shape R-42
- (1) 2 ¼" × 5 ¼", use Sew Simple Shape R-41
- (1) 3 ¼" × 3 ½", use Sew Simple Shape R-40
- (1) 5 ¾" × 7 ¾", use Sew Simple Shape R-39

Other Materials Required:

- STTI-5531 Lori Holt Cute Cuts™ Trim-it™ Ruler 10 ½" × 10 ½"
- DMC Gray 646 Floss
- Buttons

How to Build a Scarecrow Sew Along Guide

Bandana Block



Unfinished Block Size: 9 ½" × 9 ½"

Fabrics Required:

- (1) 1 ½" × 1 ½"—C14657-Schoolhouse Dots
- (2) 1 ¾" × 2 ½"—C14654-Riley Red Blossom
- (2) 3 ¼" × 4 ¾"—C14654-Riley Red Blossom
- (1) 5 ¾" × 9"—C14668-Schoolhouse Kerchief
- (1) 10 ½" × 10 ½"—C14669-Latte Maple

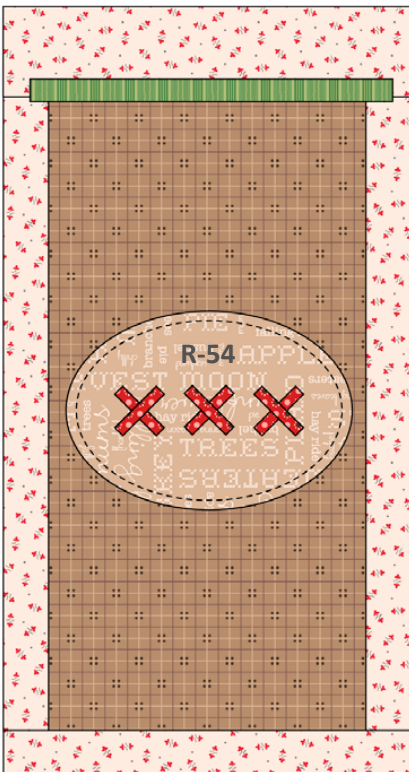
Cut From Interfacing:

- (1) 1 ½" × 1 ½", use Sew Simple Shape R-10
- (2) 1 ¾" × 2 ½", use Sew Simple Shape R-38
- (2) 3 ¼" × 4 ¾", use Sew Simple Shape R-37 (1 reverse)
- (1) 5 ¾" × 9", use Sew Simple Shape R-36

Other Materials Required:

- STTI-5530 Lori Holt Cute Cuts™ Trim-it™ Ruler 9 ½" × 9 ½"

Gunny Sack Block



Unfinished Block Size: 9 ½" × 17 ½"

Fabrics Required:

- (6) ⅝" × 2" strips; use bias tape maker to make ¼" Straight Bias—C14657-Schoolhouse Dots
- (1) 1" × 8 ½" strip; use bias tape maker to make ½" Straight Bias—C14665-Basil Stripe
- (2) 1 ½" × 14 ½"—C14655-Latte Posy
- (2) 2 ½" × 9 ½"—C14655-Latte Posy
- (1) 6 ¼" × 8"—C14667-Tea Dye Words
- (1) 7 ½" × 14 ½"—C14661-Brown Homespun

Cut From Interfacing:

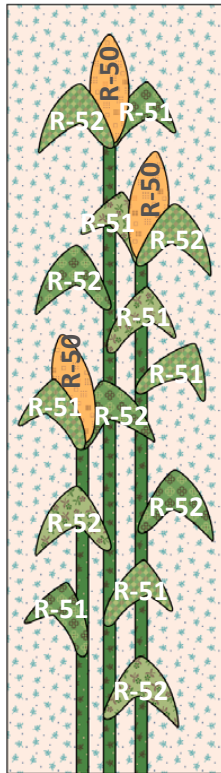
- (1) 5" × 7", use Sew Simple Shape R-54

Other Materials Required:

- STTI-5530 Lori Holt Cute Cuts™ Trim-it™ Ruler 9 ½" × 9 ½"
- DMC Gray 646 Floss

How to Build a Scarecrow Sew Along Guide

Corn Block



Unfinished Block Size: 9 ½" × 32 ½"

Fabrics Required:

- (1) 1" × 14 ¼" strip; use bias tape maker to make ½" Straight Bias—C14663-Clover Sprig
- (1) 1" × 22 ¾" strip; use bias tape maker to make ½" Straight Bias—C14663-Clover Sprig
- (1) 1" × 30" strip; use bias tape maker to make ½" Straight Bias—C14663-Clover Sprig
- (3) 2 ¼" × 5"—C14653-Marigold Squares
- (2) 3 ¼" × 3 ¼"—C14664-Lettuce Perennial
- (2) 3 ¼" × 3 ½"—C14664-Lettuce Perennial
- (2) 3 ¼" × 3 ¼"—C14660-Basil Gingham

- (2) 3 ¼" × 3 ½"—C14660-Basil Gingham
- (2) 3 ¼" × 3 ¼"—C14668-Basil Kerchief
- (3) 3 ¼" × 3 ½"—C14668-Basil Kerchief
- (1) 10 ½" × 33 ½"—C14663-Latte Sprig

Cut From Interfacing:

- (3) 2 ¼" × 5", use Sew Simple Shape R-50
- (7) 3 ¼" × 3 ¼", use Sew Simple Shape R-52 (3 reverse)
- (7) 3 ¼" × 3 ½", use Sew Simple Shape R-51 (4 reverse)

Other Materials Required:

- STTI-5530 Lori Holt Cute Cuts™ Trim-it™ Ruler 9 ½" × 9 ½"

Leaves Block



Unfinished Block Size: 9 ½" × 12 ½"

Fabrics Required:

- (1) 2 ¾" × 3"—C14653-Marigold Squares
- (1) 2 ¾" × 3"—C14653-Pewter Squares
- (1) 2 ¾" × 3"—C14657-Schoolhouse Dots
- (1) 2 ¾" × 3"—C14660-Pumpkin Gingham
- (1) 2 ¾" × 3"—C14661-Brown Homespun
- (1) 2 ¾" × 3"—C14662-Plum Leaves
- (1) 2 ¾" × 3"—C14663-Clover Sprig
- (1) 2 ¾" × 3"—C14664-Lettuce Perennial
- (1) 2 ¾" × 3"—C14666-Cider Sunflowers
- (1) 2 ¾" × 3"—C14666-Taffy Sunflowers
- (1) 2 ¾" × 3"—C14667-Pumpkin Words
- (1) 2 ¾" × 3"—C14668-Schoolhouse Kerchief

- (12) ¾" × 2 ¼" strips; use bias tape maker to make ¼" Straight Bias—C14668-Raisin Kerchief
- (1) 4 ½" × 4 ½"—C14652-Latte Berries
- (1) 4 ½" × 4 ½"—C14653-Latte Squares
- (1) 4 ½" × 4 ½"—C14658-Latte Stitch
- (1) 4 ½" × 4 ½"—C14655-Latte Posy
- (1) 4 ½" × 4 ½"—C14663-Latte Sprig
- (1) 4 ½" × 4 ½"—C14664-Latte Perennial
- (2) 4 ½" × 4 ½"—C14667-Latte Words
- (2) 4 ½" × 4 ½"—C14668-Latte Kerchief
- (1) 4 ½" × 4 ½"—C14669-Latte Maple
- (1) 4 ½" × 4 ½"—C14670-Latte Gunny Sack

Cut From Interfacing:

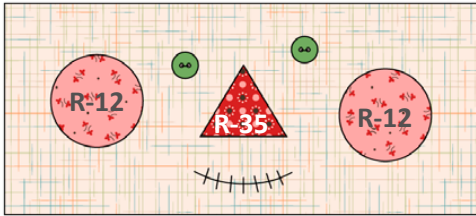
- (12) 2 ¾" × 3", use Sew Simple Shape R-53

Other Materials Required:

- STCC-5536 Lori Holt Cute Cuts™ Trim-it™ Ruler 4 ½" × 4 ½"
- STTI-5532 Lori Holt Cute Cuts™ Trim-it™ Ruler 12 ½" × 12 ½"

How to Build a Scarecrow Sew Along Guide

Face Block



Unfinished Block Size: 4 1/2" x 9 1/2"

Fabrics Required:

- (2) 2" x 2"—C14655-Coral Posy
- (1) 2" x 2 1/4"—C14657-Schoolhouse Dots
- (1) 4 1/2" x 9 1/2"—C14670-Latte Gunny Sack

Cut From Interfacing:

- (2) 2" x 2", use Sew Simple Shape R-12
- (1) 2" x 2 1/4", use Sew Simple Shape R-35

Other Materials Required:

- STCC-5536 Lori Holt Cute Cuts™ Trim-it™ Ruler 4 1/2" x 4 1/2"
- STTI-5530 Lori Holt Cute Cuts™ Trim-it™ Ruler 9 1/2" x 9 1/2"
- DMC Gray 646 Floss
- Buttons

Overalls Block



Unfinished Block Size: 12 1/2" x 32 1/2"

Fabrics Required:

- (2) 1 3/4" x 4 1/4"—C14658-Denim Stitch
- (1) 1 3/4" x 8 1/4"—C14658-Denim Stitch
- (2) 2 1/4" x 5"—C14658-Denim Stitch
- (1) 4 1/2" x 4 1/2"—C14658-Denim Stitch
- (1) 1 7/8" x 2" strip; use bias tape maker to make 1" Straight Bias—C14657-Schoolhouse Dots
- (1) 2 3/4" x 2 3/4"—C14651-Marigold Plaid
- (1) 2 3/4" x 2 3/4"—C14654-Riley Red Blossom
- (1) 2 3/4" x 2 3/4"—C14656-Coral Bouquet
- (1) 2 3/4" x 2 3/4"—C14659-Milk Can Cosmos
- (1) 2 3/4" x 2 3/4"—C14667-Pumpkin Words
- (1) 4 1/2" x 5 3/4"—C14657-Denim Dots
- (1) 6 3/4" x 8"—C14665-Denim Stripe
- (1) 9 1/4" x 18"—C14665-Denim Stripe
- (1) 13 1/2" x 33 1/2"—C14652-Latte Berries

Cut From Interfacing:

- (1) 9 1/4" x 18", use Sew Simple Shape R-15
- (1) 6 3/4" x 8", use Sew Simple Shape R-16
- (1) 4 1/2" x 4 1/2", use Sew Simple Shape R-21
- (1) 4 1/2" x 5 3/4", use Sew Simple Shape R-17
- (5) 2 3/4" x 2 3/4", use Sew Simple Shape R-22
- (2) 2 1/4" x 5", use Sew Simple Shape R-19
- (1) 1 3/4" x 8 1/4", use Sew Simple Shape R-20
- (2) 1 3/4" x 4 1/4", use Sew Simple Shape R-18 (1 reverse)

Other Materials Required:

- STTI-5532 Lori Holt Cute Cuts™ Trim-it™ Ruler 12 1/2" x 12 1/2"

How to Build a Scarecrow Sew Along Guide

Boots Block



Unfinished Block Size: 10 ½" × 12 ½"

Fabrics Required:

- (2) 1 ¾" × 6 ¼"—C14663-Raisin Sprig
- (2) 2" × 4"—C14661-Brown Homespun
- (2) 6 ¼" × 6 ¼"—C14652-Chestnut Berries
- (1) 11 ½" × 13 ½"—C14658-Latte Stitch

Cut From Interfacing:

- (2) 2" × 4", use Sew Simple Shape R-31 (1 reverse) after piecing
- (2) 6 ¾" × 7 ½", use Sew Simple Shape R-30 (1 reverse) after piecing

Other Materials Required:

- STTI-5531 Lori Holt Cute Cuts™ Trim-it™ Ruler 10 ½" × 10 ½"
- STTI-5532 Lori Holt Cute Cuts™ Trim-it™ Ruler 12 ½" × 12 ½"

Hat Block



Unfinished Block Size: 7 ½" × 15 ½"

Fabrics Required:

- (1) 8 ½" × 16 ½"—C14658-Latte Stitch
- (1) 7" × 13 ¾"—C14666-Cider Sunflowers
- (1) 2" × 7"—C14661-Raindrop Homespun

Cut From Interfacing:

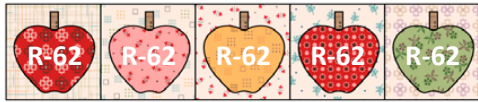
- (1) 7" × 13 ¾", use Sew Simple Shape R-28
- (1) 2" × 7", use Sew Simple Shape R-29

Other Materials Required:

- STTI-21863 Lori Holt Cute Cuts™ Trim-it™ Ruler 7 ½" × 7 ½"
- STTI-22276 Lori Holt Cute Cuts™ Trim-it™ Ruler 15 ½" × 15 ½"

How to Build a Scarecrow Sew Along Guide

Apples Block



Unfinished Block Size: 3 ½" × 15 ½"

Fabrics Required:

- (5) ⅝" × 1 ½" strips; use bias tape maker to make ¼" Straight Bias—C14661-Brown Homespun
- (1) 2 ½" × 3"—C14653-Marigold Squares
- (1) 2 ½" × 3"—C14655-Coral Posy
- (1) 2 ½" × 3"—C14657-Schoolhouse Dots
- (1) 2 ½" × 3"—C14664-Lettuce Perennial
- (1) 2 ½" × 3"—C14668-Schoolhouse Kerchief
- (2) 3" × 4 ¼"—C14660-Basil Gingham
- (1) 4 ½" × 4 ½"—C14653-Latte Squares
- (1) 4 ½" × 4 ½"—C14655-Latte Posy
- (1) 4 ½" × 4 ½"—C14663-Latte Sprig

- (1) 4 ½" × 4 ½"—C14668-Latte Kerchief
- (1) 4 ½" × 4 ½"—C14670-Latte Gunny Sack

Cut From Interfacing:

- (5) 2 ½" × 3", use Sew Simple Shape R-62

Other Materials Required:

- STTI-5525 Lori Holt Cute Cuts™ Trim-it™ Ruler 3 ½" × 3 ½"
- STTI-22276 Lori Holt Cute Cuts™ Trim-it™ Ruler 15 ½" × 15 ½"

Shirt Block



Unfinished Block Size: 15 ½" × 20 ½"

Fabrics Required:

- (1) 1" × 2" strip; use bias tape maker to make ½" Straight Bias—C14670-Latte Gunny Sack
- (1) 1 ¼" × 17" strip; use bias tape maker to make ¾" Straight Bias—C14665-Basil Stripe
- (1) 1 ½" × 3 ½"—C14665-Basil Stripe
- (2) 2 ½" × 2 ¾"—C14665-Basil Stripe
- (2) 2 ¾" × 3 ½"—C14660-Basil Gingham
- (2) 2 ¾" × 13 ½"—C14660-Basil Gingham
- (2) 3" × 4 ¼"—C14660-Basil Gingham
- (1) 7 ¾" × 18 ½"—C14668-Basil Kerchief
- (1) 16 ½" × 21 ½"—C14669-Latte Maple

Cut From Interfacing:

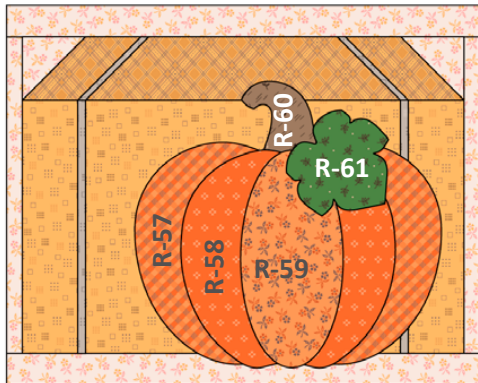
- (1) 1 ½" × 3 ½", use Sew Simple Shape R-27
- (2) 3" × 4 ¼", use Sew Simple Shape R-26 (1 reverse)
- (2) 2 ¾" × 3 ½", use Sew Simple Shape R-25
- (2) 2 ¾" × 14", use Sew Simple Shape R-24 after piecing
- (1) 7 ¾" × 18 ½", use Sew Simple Shape R-23

Other Materials Required:

- STTI-22276 Lori Holt Cute Cuts™ Trim-it™ Ruler 15 ½" × 15 ½"
- STTI-21861 Lori Holt Cute Cuts™ Trim-it™ Ruler 20 ½" × 20 ½"

How to Build a Scarecrow Sew Along Guide

Hay and Pumpkin Block



Unfinished Block Size: 12 ½" × 15 ½"

Fabrics Required:

- (2) ⅝" × 3 ½" strips; use bias tape maker to make ¼" Straight Bias—C14653-Pewter Squares
- (2) ⅝" × 8 ½" strips; use bias tape maker to make ¼" Straight Bias—C14653-Pewter Squares
- (2) 1 ½" × 10 ½"—C14664-Latte Perennial
- (2) 2" × 16 ½"—C14664-Latte Perennial
- (2) 2 ½" × 2 ½"—C14664-Latte Perennial
- (1) 2 ½" × 14 ½"—C14651-Marigold Plaid
- (1) 3" × 3 ¾"—C14652-Chestnut Berries
- (1) 3 ¾" × 3 ¾"—C14663-Clover Sprig
- (1) 3 ¾" × 7 ¼"—C14664-Yam Perennial
- (1) 7" × 7"—C14658-Autumn Stitch

- (1) 7 ¼" × 10"—C14660-Pumpkin Gingham
- (1) 8 ½" × 14 ½"—C14653-Marigold Squares

Cut From Interfacing:

- (1) 3" × 3 ¾", use Sew Simple Shape R-60
- (1) 3 ¾" × 3 ¾", use Sew Simple Shape R-61
- (1) 3 ¾" × 7 ¼", use Sew Simple Shape R-59
- (1) 7 ¼" × 10", use Sew Simple Shape R-57
- (1) 7" × 7", use Sew Simple Shape R-58

Other Materials Required:

- STTI-5532 Lori Holt Cute Cuts™ Trim-it™ Ruler 12 ½" × 12 ½"
- STTI-22276 Lori Holt Cute Cuts™ Trim-it™ Ruler 15 ½" × 15 ½"

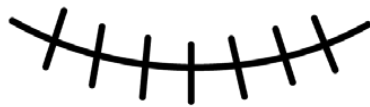
How to Build a Scarecrow Sew Along Guide

Embroidery Guide

*Lori uses 3 strands of floss

This should
measure
1 inch.

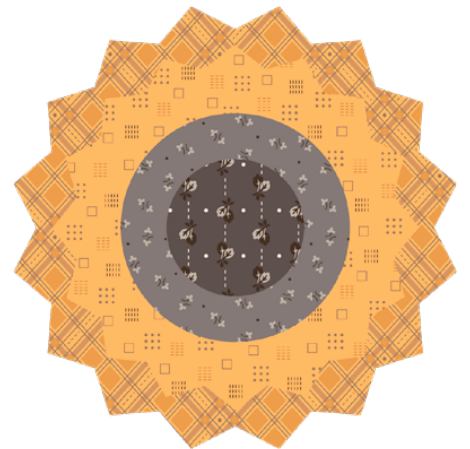
*Tape these patterns onto Lori's Easy Trace™ Light Box.
Trace lines directly onto fabric with a mechanical pencil.
Your embroidery will cover the pencil lines!



Smile

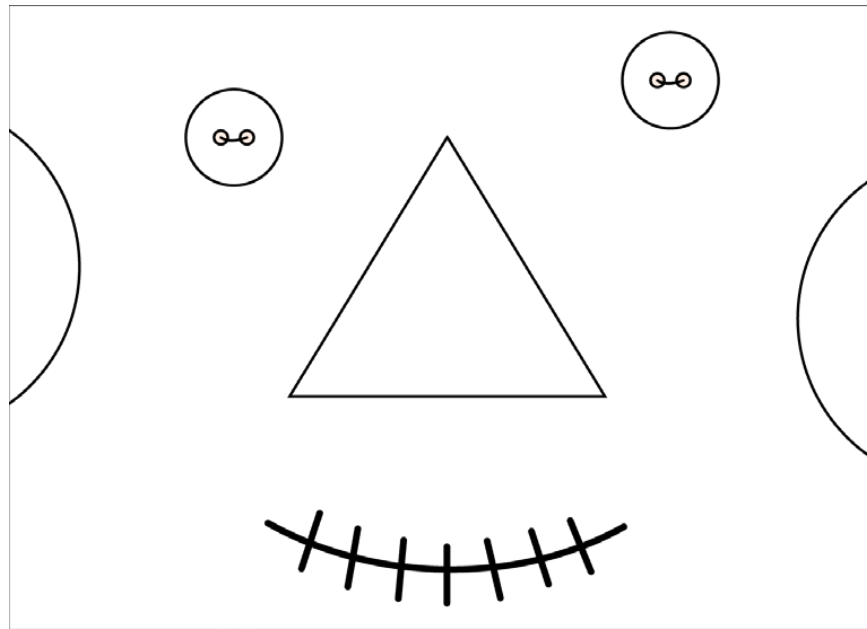


Nail

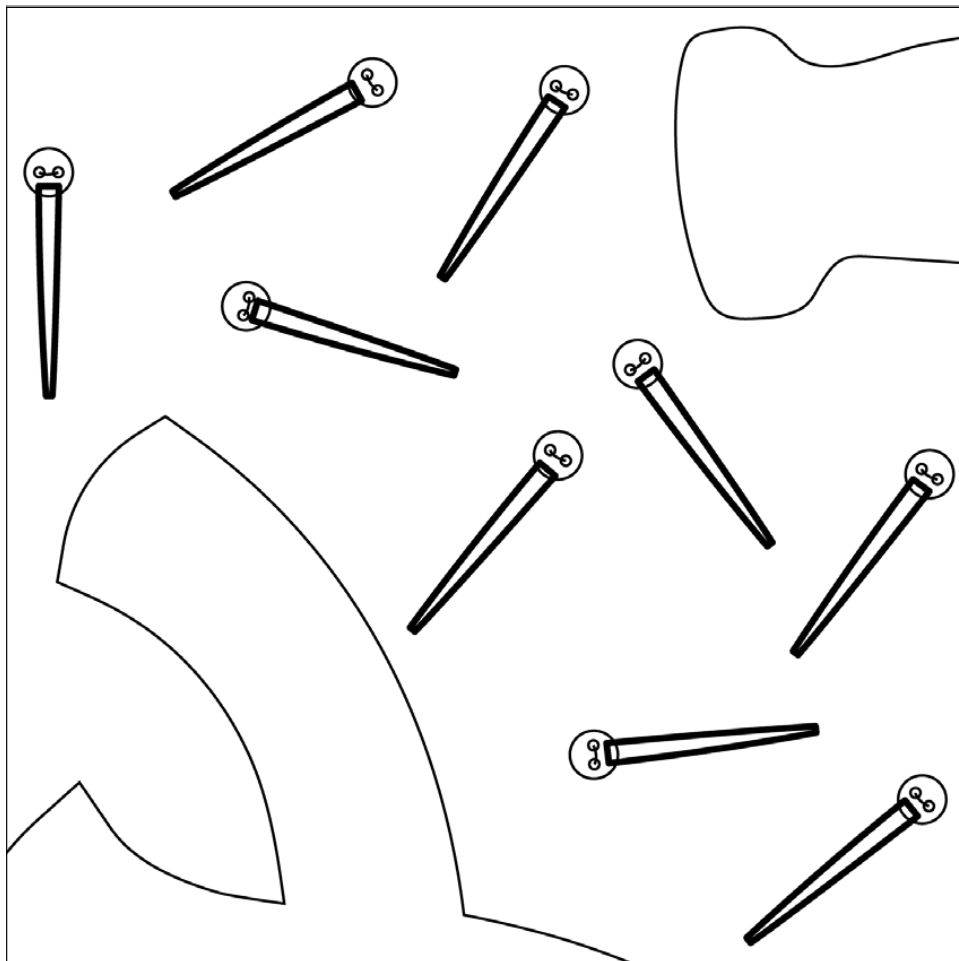


How to Build a Scarecrow Sew Along Guide

Embroidery Guide (cont'd.)



Face Placement Guide



Nails Placement Guide

How to Build a Scarecrow Sew Along Guide

Sewing Blocks Together

The blocks in the center of the quilt are pieced by groups. Once the groups are completed, they are then pieced together as units to form the quilt center. Press all seams open. The quilt center should measure 45 ½" × 57 ½".



How to Build a Scarecrow Sew Along Guide

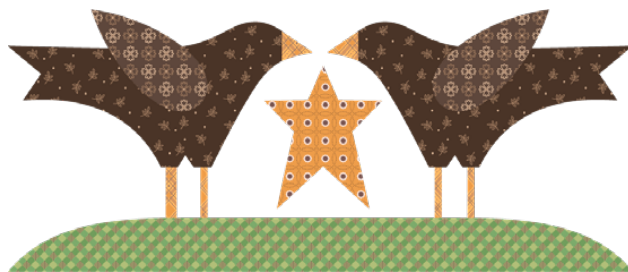
Borders

The measurements given are the UNFINISHED SIZE of each section shown.



Attaching the Borders:

After sewing the quilt center together, sew the Pieced Blocks into Left, Right, Top and Bottom borders as shown. Then, use the diagram above to add the borders, working from the inside out. Always add the side borders first, then the top/bottom borders. Press all seams open. The quilt top should measure $74\frac{1}{2}'' \times 86\frac{1}{2}''$ unfinished.



Finishing

Enjoy your How to Build a Scarecrow Quilt!!



