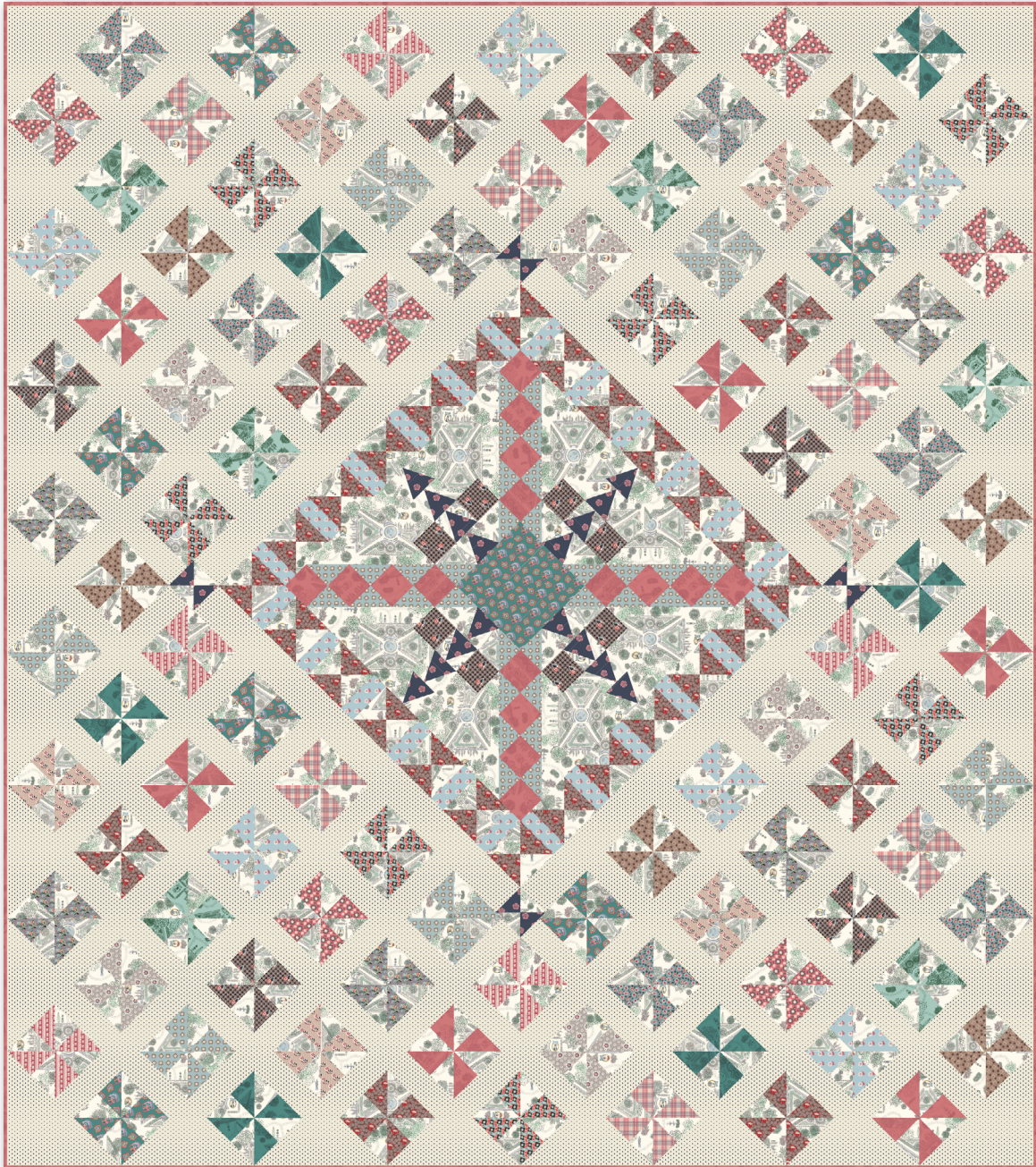


# EDMUND AND FANNY



77" × 86 ¾"

A  
JANE AUSTEN'S  
HOUSE

*Mansfield Park*



08/01/2024



# EDMUND AND FANNY

FINISHED QUILT SIZE 77" × 86 ¾"

Please read all instructions before beginning this project.  
Yardage calculated using a 42" usable width of fabric.

## GENERAL INSTRUCTIONS

Please check [www.rileyblakedesigns.com/pattern-updates](http://www.rileyblakedesigns.com/pattern-updates) or scan the QR Code for any revisions before starting this project. This pattern requires a basic knowledge of quilting techniques and terminology. The quilt and block diagrams portrayed are virtual images. The layout and look of your project may differ when using actual fabric. It is not recommended to prewash fabric before cutting and assembling.

WOF = Width of Fabric  
RST = Right Sides Together  
HST = Half Square Triangle  
QST = Quarter Square Triangle

## FABRIC REQUIREMENTS

All fabrics from the Mansfield Park collection unless stated otherwise.

⅞ yard of each:

C15193-EDMUND Edmund  
C15194-CRAWFORD Crawford  
C15195-LADYBERTRAM Lady Bertram  
C15196-MRSNORRIS Mrs. Norris  
C15197-BETSEY Betsey  
C15198-RUSHWORTH Rushworth  
C15199-ADMIRAL Admiral  
C15201-YATES Yates  
C15205-GREEN Mansfield Park Landscape  
C15205-MINT Mansfield Park Landscape

¼ yard of each:

C15191-PRICE Price  
C15202-MRSGRANT Mrs. Grant  
C15203-SOTHERTON Sotherton Court  
C15204-ANTIGUA Antigua  
C15190-SUSAN Susan

⅓ yard C15192-WILLIAM William

⅝ yard C15200-SIRTHOMAS Sir Thomas

1 yard C15205-BERRY Mansfield Park Landscape

2 ½ yards C15205-CREAM Mansfield Park Landscape

3 ¼ yards C10019-NAVY Dot (Background)

© 2024 Riley Blake Designs. All Rights Reserved.

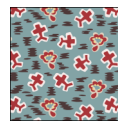


## OTHER SUPPLIES

Basic Sewing Supplies  
2 ⅝ yards Wide Back backing fabric of your choice  
(suggested WB10020-ACCOMPLISHED Woman)  
Batting

## CUTTING INSTRUCTIONS

When cutting fabrics, use a straight edge ruler and rotary cutter. Measurements include ¼" seam allowance. Label, allocate, and organize all cuts as noted.



**Edmund**

Cut (1) 3 ½" × WOF strip; subcut:  
(12) 3 ½" × 3 ½" squares. Label as A.



**Crawford**

Cut (1) 3 ½" × WOF strip; subcut:  
(12) 3 ½" × 3 ½" squares. Label as A.



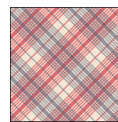
**Lady Bertram**

Cut (1) 3 ½" × WOF strip; subcut:  
(10) 3 ½" × 3 ½" squares. Label as A.



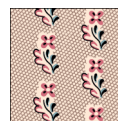
**Mrs. Norris**

Cut (1) 3 ½" × WOF strip; subcut:  
(12) 3 ½" × 3 ½" squares. Label as A.



**Betsey**

Cut (1) 3 ½" × WOF strip; subcut:  
(12) 3 ½" × 3 ½" squares. Label as A.



**Rushworth**

Cut (1) 3 ½" × WOF strip; subcut:  
(12) 3 ½" × 3 ½" squares. Label as A.



**Admiral**

Cut (1) 3 ½" × WOF strip; subcut:  
(12) 3 ½" × 3 ½" squares. Label as A.



**Yates**

Cut (1) 3 ½" × WOF strip; subcut:  
(10) 3 ½" × 3 ½" squares. Label as A.



**Green Mansfield Park Landscape**

Cut (1) 3 ½" × WOF strip; subcut:  
(12) 3 ½" × 3 ½" squares. Label as A.



**Mint Mansfield Park Landscape**

Cut (1) 3 ½" × WOF strip; subcut:  
(12) 3 ½" × 3 ½" squares. Label as A.

# EDMUND AND FANNY



## Price

Cut (1) 4" x WOF strip; subcut:  
 (16) 1 3/4" x 4" rectangles. Label as B.  
 (8) 1 5/8" x 4" rectangles. Label as C.  
 Cut (1) 3 1/2" x WOF strip; subcut:  
 (12) 3 1/2" x 3 1/2" squares. Label as A.



## Mrs. Grant

Cut (2) 3 1/2" x WOF strips; subcut:  
 (14) 3 1/2" x 3 1/2" squares. Label as A.



## Sotherton Court

Cut (1) 3 1/2" x WOF strip; subcut:  
 (10) 3 1/2" x 3 1/2" squares. Label as A.  
 Cut (1) 2 3/4" x WOF strip; subcut:  
 (8) 2 3/4" x 2 3/4" squares. Label as D.



## Antigua

Cut (1) 4 1/8" x WOF strip; subcut:  
 (2) 4 1/8" x 4 1/8" squares. Label as E.  
 Cut (1) 2 3/4" x WOF strip; subcut:  
 (16) Center Triangles using the template on page 7.



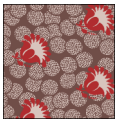
## Susan

Cut (1) 7 1/4" x WOF strip; subcut:  
 (1) 7 1/4" x 7 1/4" square. Label as F.  
 (12) 3 1/2" x 3 1/2" squares. Label as A.



## William

Cut (1) 3 1/2" x WOF strip; subcut:  
 (12) 3 1/2" x 3 1/2" squares. Label as A.  
 Cut (2) 3 1/4" x WOF strips; subcut:  
 (16) 3 1/4" x 3 1/4" squares. Label as G.



## Sir Thomas

Cut (2) 5" x WOF strips; subcut:  
 (12) 5" x 5" squares. Label as H.  
 Cut (2) 3 1/2" x WOF strips; subcut:  
 (14) 3 1/2" x 3 1/2" squares. Label as A.



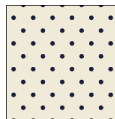
## Berry Mansfield Park Landscape

Cut (2) 3 1/2" x WOF strips; subcut:  
 (14) 3 1/2" x 3 1/2" squares. Label as A.  
 (1) 2 3/4" x 2 3/4" square. Label as I.  
 Cut (1) 2 3/4" x WOF strip; subcut:  
 (15) 2 3/4" x 2 3/4" squares. Label as I.  
 Cut (9) 2 1/2" x WOF strips. Set aside for binding.  
**Note: You will have a total of (16) I-squares.**



## Cream Mansfield Park Landscape

Cut (3) 5" x WOF strips; subcut:  
 (12) 5" x 5" squares. Label as J.  
 (16) 2 3/4" x 5" rectangles. Label as K.  
 (2) 4 1/8" x 4 1/8" squares. Label as L.  
 Cut (17) 3 1/2" x WOF strips; subcut:  
 (204) 3 1/2" x 3 1/2" squares. Label as M.  
 Cut (2) 3 1/4" x WOF strips; subcut:  
 (16) 3 1/4" x 3 1/4" squares. Label as N.  
 Cut (2) 2 3/4" x WOF strips; subcut:  
 (8) 2 3/4" x 2 3/4" squares. Label as O.  
 Fold (1) strip in half, RST. Use the Side Triangle template on page 7 to cut  
 (16) mirrored pairs of Side Triangles.



## Navy Dot

Cut (1) 9 1/2" x WOF strip; subcut:  
 (2) 9 1/2" x 9 1/2" squares. Cut each once on the diagonal.   
 Label each triangle P.  
 (1) 7 7/8" x 7 7/8" square. Cut once on the diagonal.   
 Label each triangle Q.  
 Cut (3) 7 7/8" x WOF strips; subcut:  
 (12) 7 7/8" x 7 7/8" squares. Cut each once on the diagonal.   
 Label each triangle Q.

**Note: You will have a total of (26) Q-triangles.**

Cut (4) 3 1/8" x WOF strips; subcut:  
 (4) 3 1/8" x 32 1/4" strips. Label R for medallion outer border.  
 Cut (27) 2 1/2" x WOF strips.  
 Sew (3) strips together and subcut  
 (2) 2 1/2" x 54 1/2" strips. Label as S.  
 From (2) strips, subcut a total of  
 (2) 2 1/2" x 40 1/2" strips. Label as T.  
 From (2) strips, subcut a total of  
 (2) 2 1/2" x 33 1/2" strips. Label as U.  
 From (6) strips, subcut a total of  
 (6) 2 1/2" x 26 1/2" rectangles. Label as V.  
 (4) 2 1/2" x 12 1/2" rectangles.  
 Label as W.  
 From (2) strips, subcut a total of  
 (4) 2 1/2" x 19 1/2" rectangles. Label as X.  
 From (12) strips, subcut a total of  
 (82) 2 1/2" x 5 1/2" rectangles. Label as Y.

**Note: Keep all A-squares organized in (102) sets of (2) matching squares.**

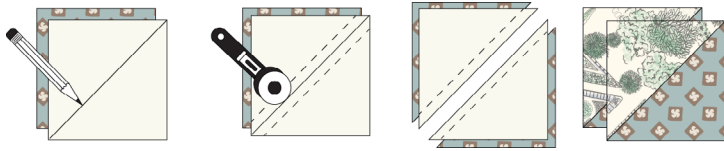
**Note: Set all Navy Dot pieces aside for Quilt Assembly.**

## SEWING TECHNIQUES

Sew all seams RST and with a  $\frac{1}{4}$ " seam allowance unless stated otherwise. Refer to the quilt layout diagram for placement of the prints. Press seams as desired unless stated otherwise. Dimensions listed in steps are unfinished sizes. Please refer to the following general sewing techniques as these methods are referenced throughout the pattern in their abbreviated form.

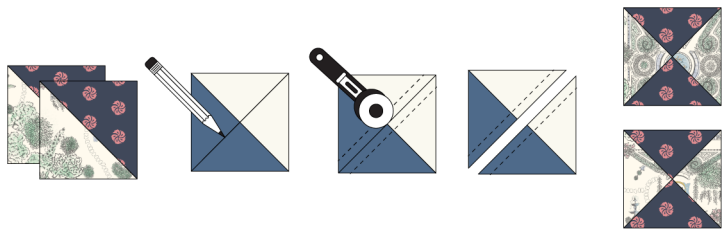
### 2-AT-A-TIME HALF SQUARE TRIANGLE METHOD (HST)

Place (2) squares RST. Draw a diagonal line on the wrong side of (1) square. Stitch  $\frac{1}{4}$ " on each side of the drawn line. Cut on the drawn line to create (2) HSTs. Press toward the darker fabric. Trim HSTs to the indicated size.



### 2-AT-A-TIME QUARTER SQUARE TRIANGLE (QST)

Place (2) prepared HSTs, RST paying close attention to color blocking and matching seams. Draw a diagonal line on the wrong side of (1) HST, so the drawn line is perpendicular to the HST seam to create an "X" with the HST seam. Stitch  $\frac{1}{4}$ " on each side of the drawn line. Cut on the drawn line to create (2) QSTs. Press open and trim the QST units to the indicated size.



## BLOCK ASSEMBLY

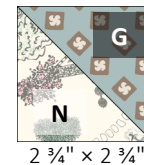
1. Gather (1) set of (2) matching **A**-squares and (2) **M**-squares. Using the HST method, make (4) HST units. Trim each to 3" x 3".



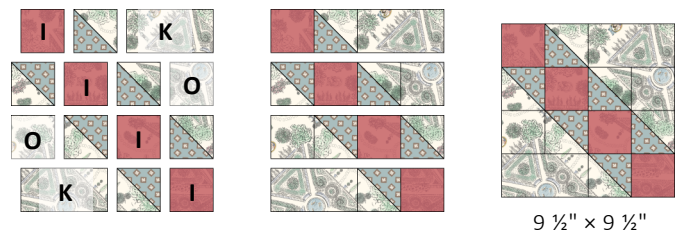
2. Sew the HST units as shown to make (1) pinwheel block that measures 5 1/2" x 5 1/2". Repeat to make (102) total pinwheel blocks. Set aside for Quilt Assembly.



3. Gather (16) **G**-squares and (16) **N**-squares. Using the HST method, make (32) HST units. Trim each to 2 3/4" x 2 3/4" square.



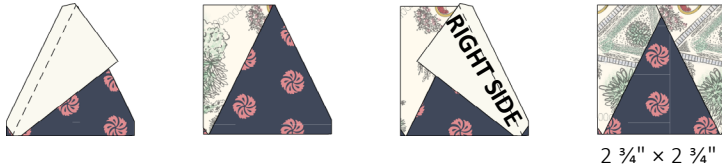
4. Sew (6) HST units, (4) **I**-squares, (2) **K**-rectangles, and (2) **O**-squares as shown to make (1) Corner Unit. Repeat to make (4) total Corner Units that each measure 9 1/2" x 9 1/2".



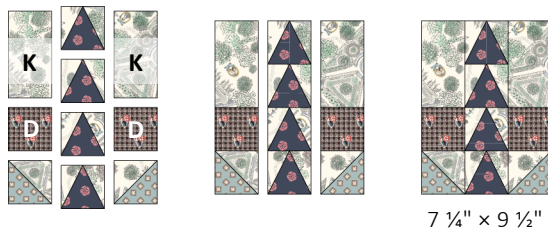


# EDMUND AND FANNY

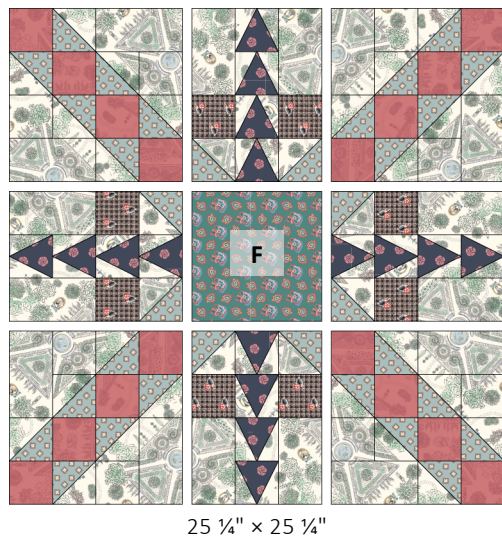
5. Gather (16) Center Triangles and (16) pairs of mirrored Side Triangles. Lay (1) Left Side Triangle on top of (1) Center Triangle and align the bottom and left side edges as shown. Sew along the left edge, then press open. Repeat for the Right Side Triangle. If needed, trim unit to  $2\frac{3}{4}" \times 2\frac{3}{4}"$ , making sure  $\frac{1}{4}"$  seam allowance is left above the top point. The bottom corners will not have matched edges, but they will not show once sewn in the seam. Repeat to make (16) total triangle units.



6. Sew (4) triangle units, (2) HST units, (2) **D**-squares, and (2) **K**-rectangles together as shown. Repeat to make (4) total Side Units that measure  $7\frac{1}{4}" \times 9\frac{1}{2}"$ .



7. Sew (4) Corner Units, (4) Side Units, and (1) **F**-square together as shown to make (1) Medallion that measures  $25\frac{1}{4}" \times 25\frac{1}{4}"$ .



8. Gather (12) **H**-squares and (12) **J**-squares. Use the HST and QST methods to make (24) Large QST units. Trim each to  $4" \times 4"$  square.

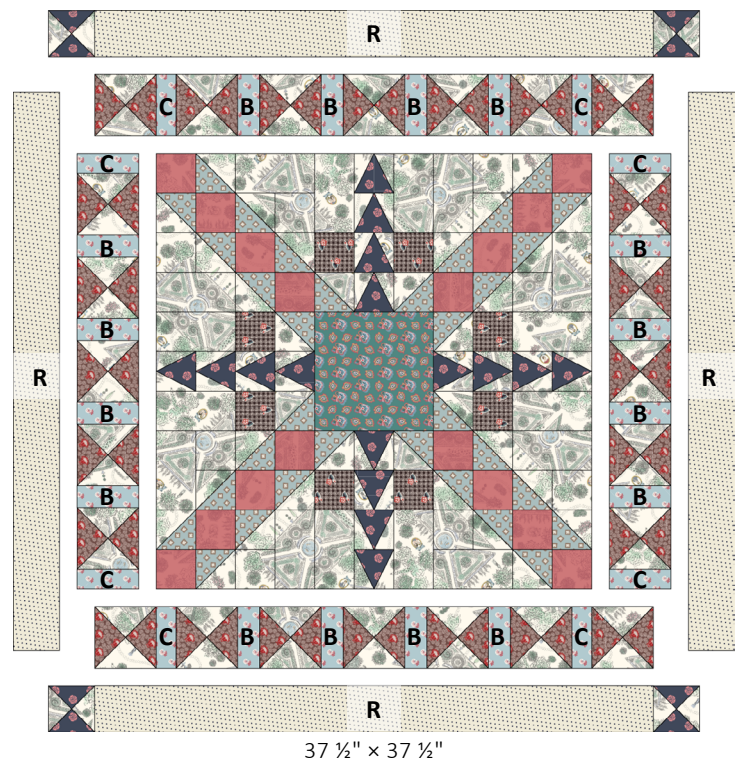


9. Gather (2) **E**-squares and (2) **L**-squares. Use the HST and QST methods to make (4) Small QST units. Trim each to  $3\frac{1}{8}" \times 3\frac{1}{8}"$  square.



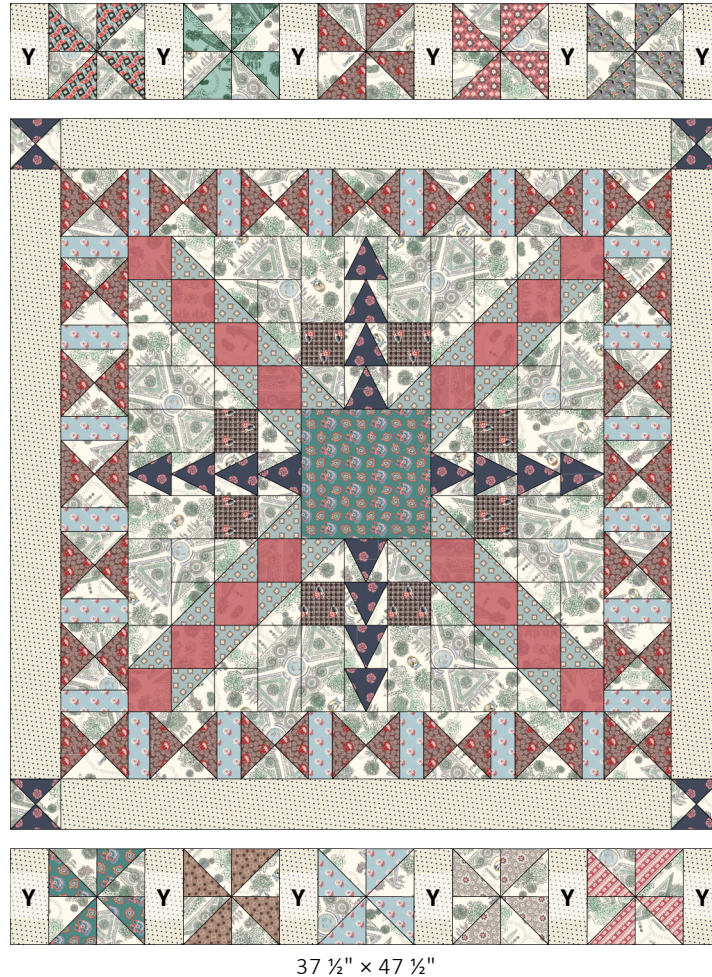
## QUILT ASSEMBLY

10. Arrange the Medallion, (24) Large QST units, (4) Small QST units, (16) **B**-rectangles, (8) **C**-rectangles, and (4) **R**-strips as shown. Sew the Large QST units, **B**-rectangles, and **C**-rectangles together to create the pieced border. Sew a Small QST unit to each side of an **R**-strip. Repeat to make (2) total outer top/bottom borders. Sew the side outer borders to each side of the quilt center. Then, sew the top/bottom outer borders to the top and bottom. The quilt center should measure  $37\frac{1}{2}" \times 37\frac{1}{2}"$ .



## EDMUND AND FANNY

11. Gather (5) Pinwheel blocks and (6) **Y**-rectangles. Sew into a row as shown below. Repeat to make (2) total pinwheel rows. Sew to the top and bottom of the quilt center, which should measure  $37\frac{1}{2}" \times 47\frac{1}{2}"$ .



12. Referencing the quilt layout diagram on page 6, arrange the units in diagonal rows. Sew the pinwheel blocks and **Y**-rectangles together, then add longer sashing rectangles when shown, to form rows. Add **P**- and **Q**-triangles to the ends of rows as shown. Sew the rows to the right and left sides of the quilt center together first, then add those to the sides of the quilt center. Add the rows to the top and bottom of the quilt center.

13. Trim the edges as needed, leaving  $\frac{1}{4}"$  seam allowance past the points of the **P**- and **Q**-triangles.

### FINISHING INSTRUCTIONS

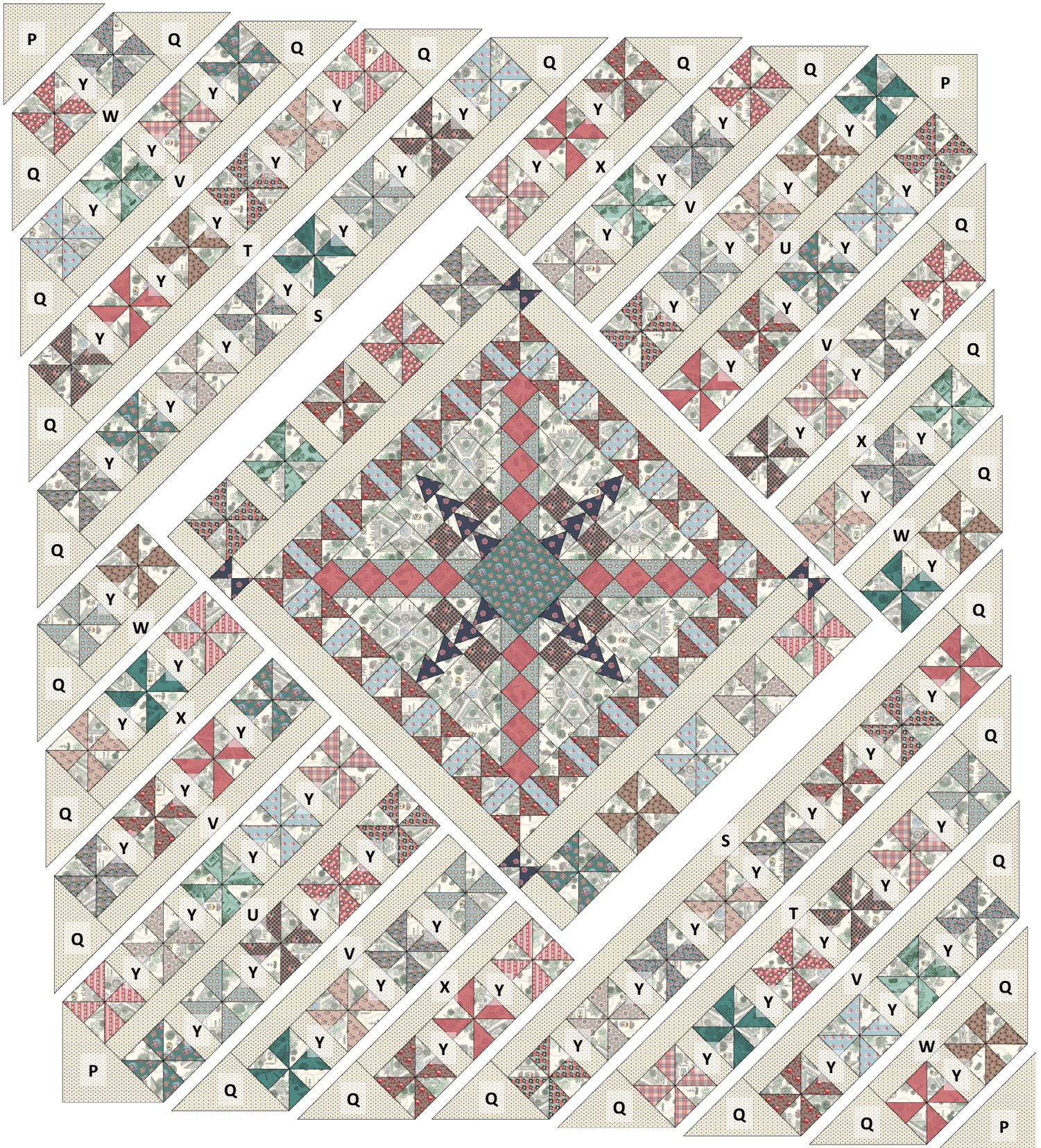
14. Finish the quilt by layering the quilt top, batting, and backing. Baste the quilt layers together and quilt as desired. Sew the Berry Mansfield Park Landscape binding strips together end-to-end. Then bind the trimmed, finished quilt using your favorite binding method.

Enjoy and share your quilt using the hashtags [#mansfieldparkfabric](#), [#edmundandfannyquilt](#), [#rileyblakedesigns](#), and [#iloverileyblake](#).



# EDMUND AND FANNY

## QUILT LAYOUT DIAGRAM



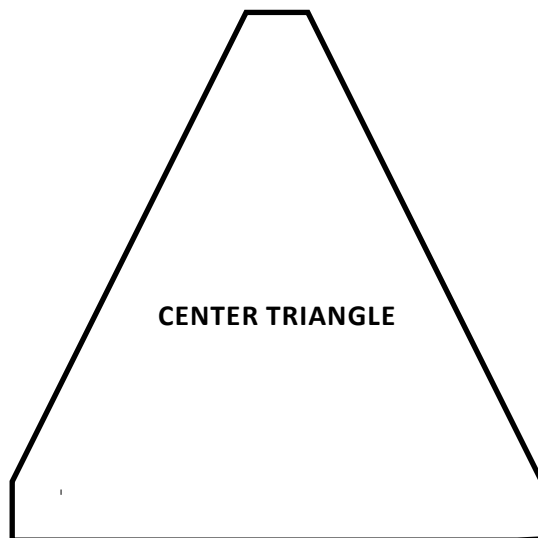
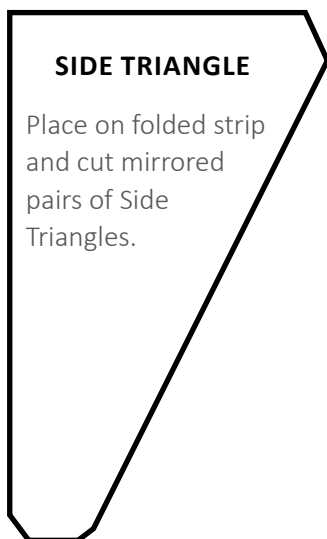
77" x 86 3/4"



# EDMUND AND FANNY

## TEMPLATES

Print at 100%. Carefully cut each template, being sure to get the small angles on corners. Follow pattern instructions to cut and piece triangle pieces.



**PRINT AT  
100%  
1"**