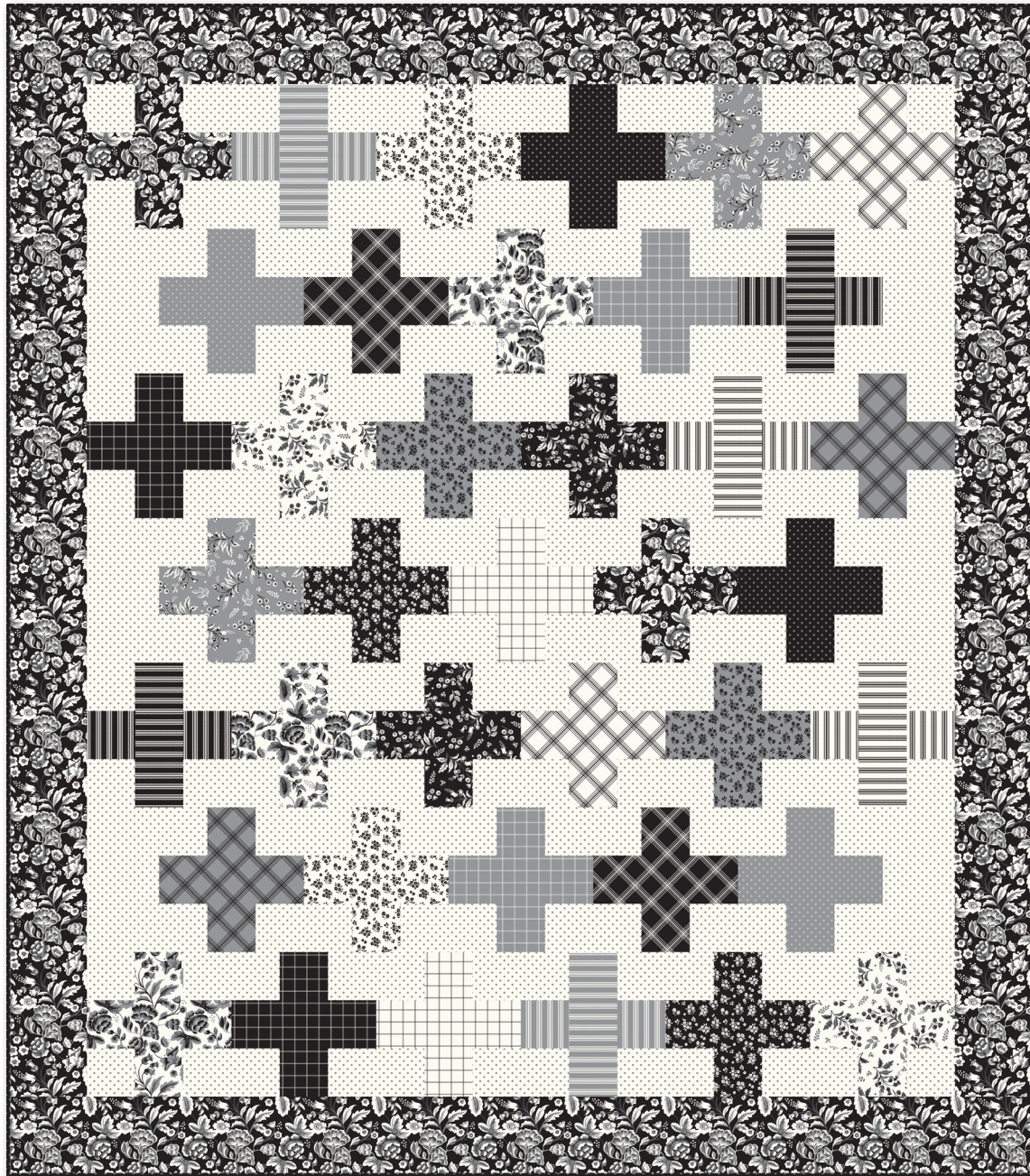


CONNECTION


Riley Blake
DESIGNS®



64 ½" x 73 ½"



= Beginner

10/01/2024

CONNECTION

FINISHED QUILT SIZE 64 ½" × 73 ½"

Please read all instructions before beginning this project.
Yardage calculated using a 42" usable width of fabric.

GENERAL INSTRUCTIONS

Please check www.rileyblakedesigns.com/pattern-updates or scan the QR code for any revisions before starting this project. This pattern requires a basic knowledge of quilting techniques and terminology. The quilt and block diagrams portrayed are virtual images. The layout and look of your project may differ when using actual fabric. It is not recommended to prewash fabric before cutting and assembling.



WOF = Width of Fabric
RST = Right Sides Together

FABRIC REQUIREMENTS

All fabrics from the Midnight Meadow collection unless stated otherwise.

(1) 10-15320-42 10-inch Stacker
1 ⅞ yards C15320-BLACK Main
1 ⅞ yard C15325-CREAM Calico
⅔ yard C15326-BLACK Grid (Binding)

OTHER SUPPLIES

Basic Sewing Supplies
2 yards Wide Back backing fabric of your choice
(suggested WB13870-BLACK Sew Text)
Batting

CUTTING INSTRUCTIONS

When cutting fabrics, use a straight edge ruler and rotary cutter. Measurements include ¼" seam allowance. Label, allocate, and organize all cuts as noted.



10-Inch Stacker

From each of (39) 10" × 10" squares, cut (2) 3 ½" × 10" strips; subcut:

- (1) 3 ½" × 9 ½" rectangle. Label as A.
- (2) 3 ½" × 3 ½" squares. Label as B.

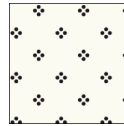
Organize in (39) matching sets of (1) **A**-rectangle and (2) **B**-squares.



Black Main

Cut (7) 5 ½" × WOF strips. Piece together end-to-end; subcut:

- (2) 5 ½" × 63 ½" Label as C.
- (2) 5 ½" × 64 ½" Label as D.



Cream Calico

Cut (1) 9 ½" × WOF strip; subcut:

- (6) 5" × 9 ½" rectangles. Label as E

Cut (13) 3 ½" × WOF strips; subcut:

- (156) 3 ½" × 3 ½" squares. Label as F.



Black Grid

Cut (8) 2 ½" × WOF strips. Set aside for binding.

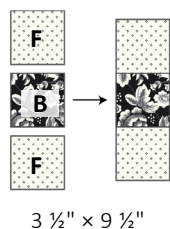
CONNECTION

SEWING TECHNIQUES

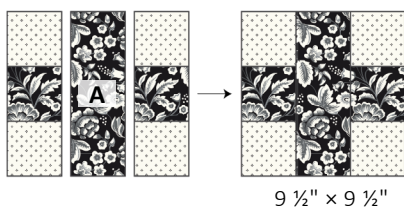
Sew all seams RST and with a ¼" seam allowance unless stated otherwise. Refer to the quilt layout diagram for placement of the prints. Press seams as desired unless stated otherwise. Dimensions listed in steps are unfinished sizes.

BLOCK ASSEMBLY

1. Select (1) matching set of (1) **A**-rectangle and (2) **B**-squares, plus (4) **F**-squares. Sew (2) **F**-squares to (1) **B**-square as shown. Make (2) Side units which should each measure $3\frac{1}{2}" \times 9\frac{1}{2}"$.

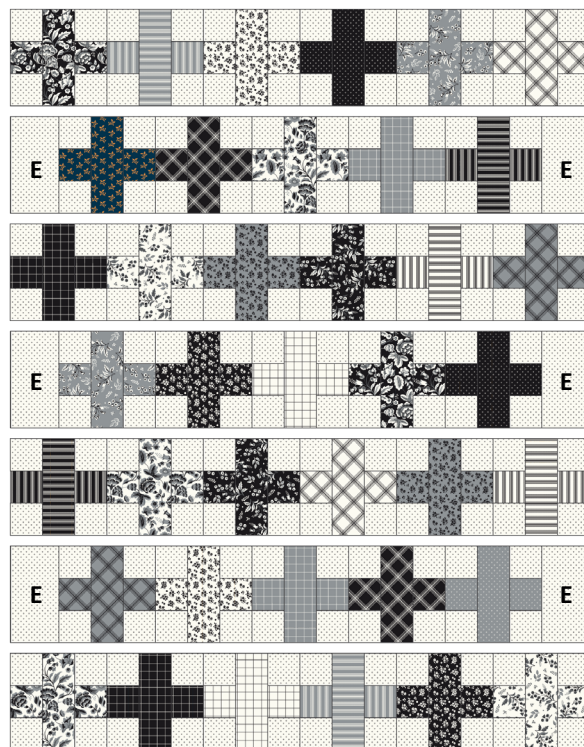


2. Sew the (2) Side units to (1) **A**-rectangle as shown. Repeat to make (39) total blocks which should each measure $9\frac{1}{2}" \times 9\frac{1}{2}"$.

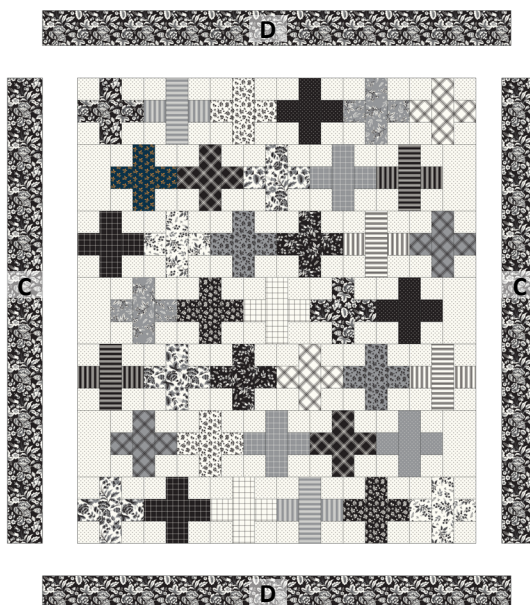


QUILT ASSEMBLY

3. Arrange the blocks and **E**-rectangles as shown in the quilt layout diagram. Sew the blocks into rows, then sew the rows together to form the quilt top which should measure $54\frac{1}{2}'' \times 63\frac{1}{2}''$.



4. Sew **C**-strips to the sides of the quilt center. Next, sew **D**-strips to the top and bottom to complete the quilt top. The quilt top should measure 64 ½" x 73 ½".



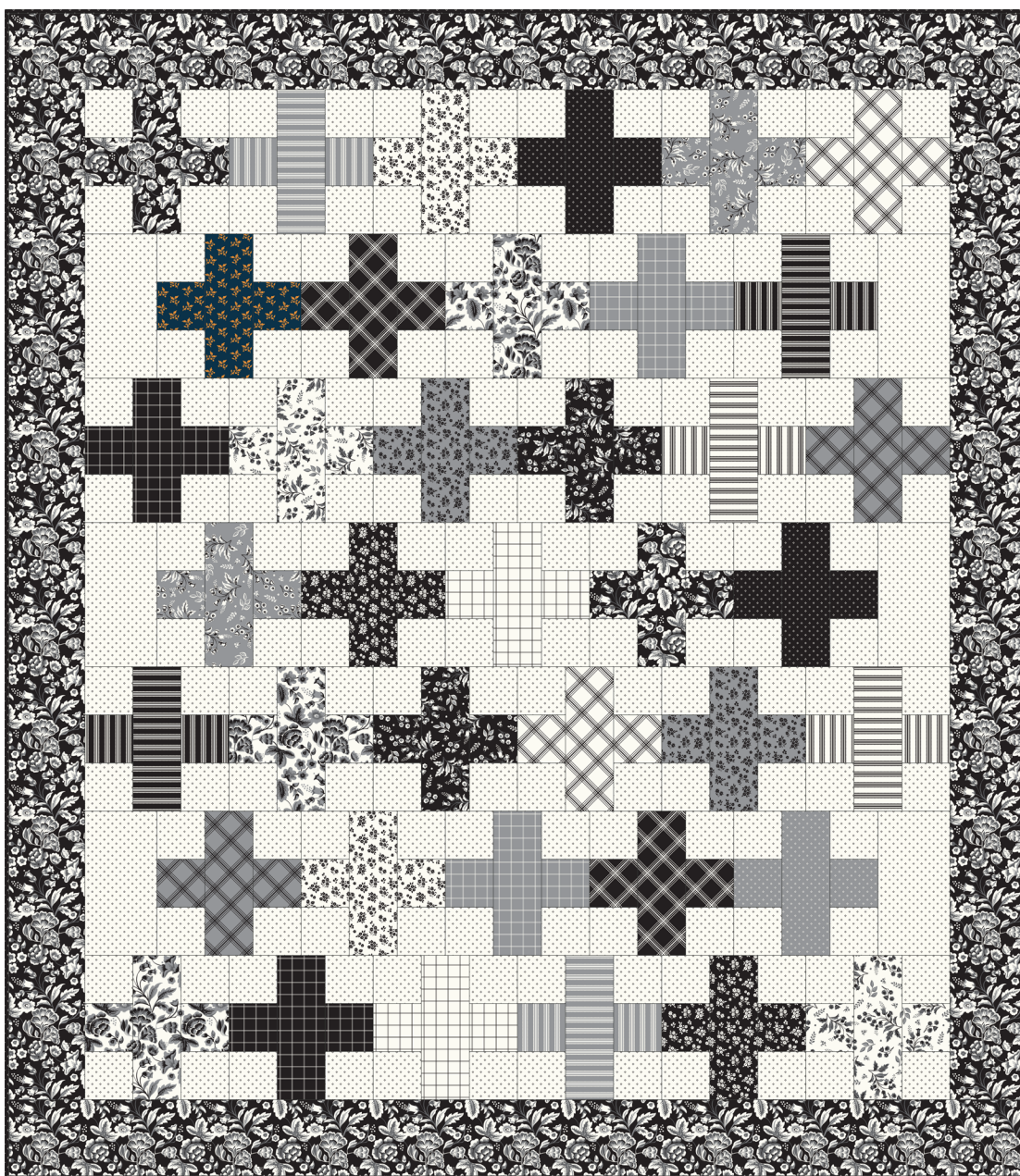
CONNECTION

FINISHING INSTRUCTIONS

5. Finish the quilt by layering the quilt top, batting, and backing. Baste the quilt layers together and quilt as desired. Sew the Black Grid binding strips together end-to-end. Then bind the trimmed, finished quilt using your favorite binding method.

Enjoy and share your quilt using the hashtags #midnight meadowfabric, #connectionquilt, #rileyblakedesigns, and #iloverileyblake.

QUILT LAYOUT DIAGRAM



64 ½" x 73 ½"