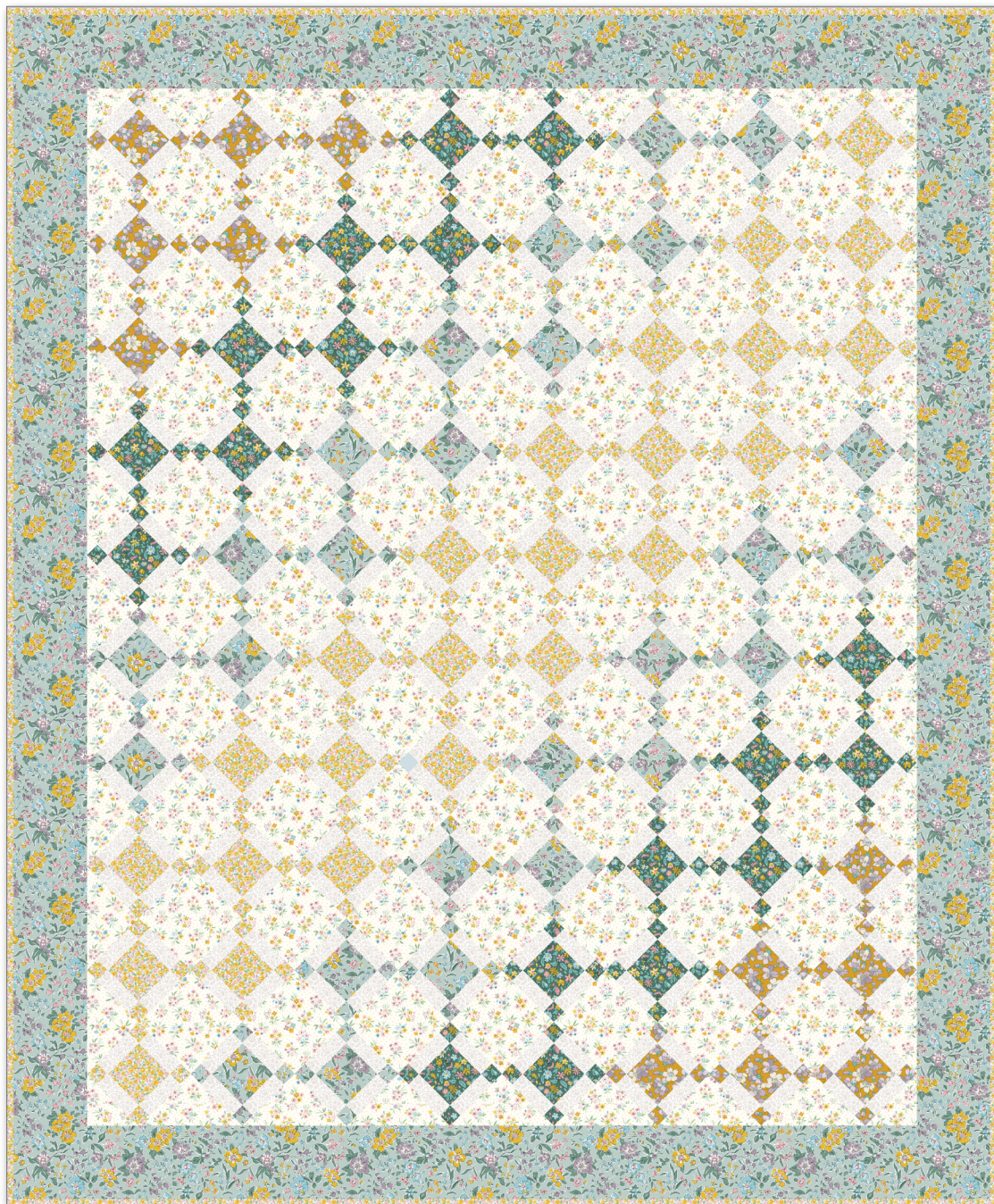


SPRINGTIME



67" x 81 1/4"

LIBERTY.

FABRICS



= Confident Beginner

11/01/2024

SPRINGTIME

FINISHED QUILT SIZE 67" × 81 ¼"

Please read all instructions before beginning this project.
Yardage calculated using a 42" usable width of fabric.

Pattern designed by The RBD Designers.

GENERAL INSTRUCTIONS

Please check www.rileyblakedesigns.com/pattern-updates or scan the QR Code for any revisions before starting this project. This pattern requires a basic knowledge of quilting techniques and terminology. The quilt and block diagrams portrayed are virtual images. The layout and look of your project may differ when using actual fabric. It is not recommended to prewash fabric before cutting and assembling.

WOF = Width of Fabric

RST = Right Sides Together

FABRIC REQUIREMENTS

All fabrics from the Heirloom Spring collection unless stated otherwise.

⅔ yard 016673104A Morning Meadow
½ yard 016673103A Etty Rose
1 ¼ yards 01666847C Garden Walk Cream
1 ⅔ yards 016673100A Spring Petal
2 yards 016673102A Beatrice Bouquet
⅔ yard 016673101A Anemone Charm (includes binding)

OTHER SUPPLIES

Basic Sewing Supplies
2 ½ yards 0166W68205B Mamie Field Wide Back backing
Batting

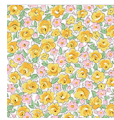
CUTTING INSTRUCTIONS

When cutting fabrics, use a straight edge ruler and rotary cutter. Measurements include ¼" seam allowance. Label, allocate, and organize all cuts as noted.



Morning Meadow

Cut (2) 3 ½" × WOF strips; subcut:
(18) 3 ½" × 3 ½" squares. Label as A.
Cut (3) 1 ½" × WOF strips; subcut:
(72) 1 ½" × 1 ½" squares. Label as B.



Etty Rose

Cut (2) 3 ½" × WOF strips; subcut:
(24) 3 ½" × 3 ½" squares. Label as A.
Cut (4) 1 ½" × WOF strips; subcut:
(96) 1 ½" × 1 ½" squares. Label as B.



Garden Walk Cream

Cut (27) 1 ½" × WOF strips; subcut:
(320) 1 ½" × 3 ½" rectangles. Label as C.



Spring Petal

Cut (7) 5 ½" × WOF strips. Piece together end-to-end; subcut:
(2) 5 ½" × 71 ¼" strips. Label as D.
(2) 5 ½" × 67" strips. Label as E.
Cut (3) 3 ½" × WOF strips; subcut:
(26) 3 ½" × 3 ½" squares. Label as A.
Cut (4) 1 ½" × WOF strips; subcut:
(104) 1 ½" × 1 ½" squares. Label as B.



Beatrice Bouquet

Cut (2) 8 ⅜" × WOF strips. Subcut:
(8) 8 ⅜" × 8 ⅜" squares, cutting each in half diagonally twice for (32) total triangles. Label as F.
(2) 4 ½" × 4 ½" squares, cutting each in half diagonally once for (4) total triangles. Label as G.
Cut (9) 5 ½" × WOF strips. Subcut:
(63) 5 ½" × 5 ½" squares. Label as H.

SPRINGTIME



Anemone Charm

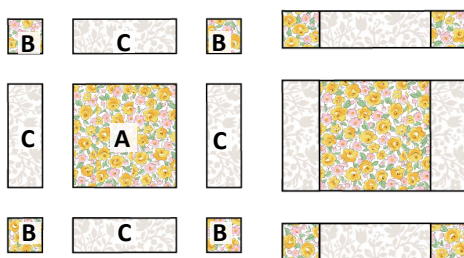
- Cut (1) $3\frac{1}{2}$ " \times WOF strip; subcut:
 (12) $3\frac{1}{2}$ " \times $3\frac{1}{2}$ " squares. Label as A.
 Cut (8) $2\frac{1}{2}$ " \times WOF strips. Set aside for binding.
 Cut (2) $1\frac{1}{2}$ " \times WOF strips; subcut:
 (48) $1\frac{1}{2}$ " \times $1\frac{1}{2}$ " squares. Label as B.

SEWING TECHNIQUES

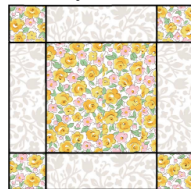
Sew all seams RST and with a $\frac{1}{4}$ " seam allowance unless stated otherwise. Refer to the quilt layout diagram for placement of the prints. Press seams as desired unless stated otherwise. Dimensions listed in steps are unfinished sizes.

BLOCK ASSEMBLY

1. Gather (1) **A**-square and (4) **B**-squares from one print, and (4) **C**-rectangles.
2. Arrange the Step 1 pieces as shown below. Sew pieces together into rows. Next, sew the rows together to make (1) block.
3. Repeat steps 1-2 to make (80) total blocks in the fabrics shown below.

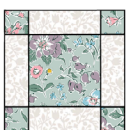


Make (24)
Etty Rose



$5\frac{1}{2}$ " \times $5\frac{1}{2}$ "

Make (26)
Spring Petal



Make (18)
Morning Meadow



Make (12)
Anemone Charm



QUILT ASSEMBLY

4. Arrange (80) blocks, (63) **H**-squares, (32) **F**-triangles, and (4) **G**-triangles into (19) diagonal rows as shown in the Quilt Layout Diagram on page 4. Pay careful attention to the position of the blocks to get a cascading color effect across the quilt top.

5. Sew the blocks and pieces together into rows. Next, sew the rows together to make the quilt center, which should measure 57 " \times $71\frac{1}{4}$ ".

6. Sew (1) **D**-strip to the sides of the quilt center. Next, sew (1) **E**-strip to the top and bottom to complete the quilt top.

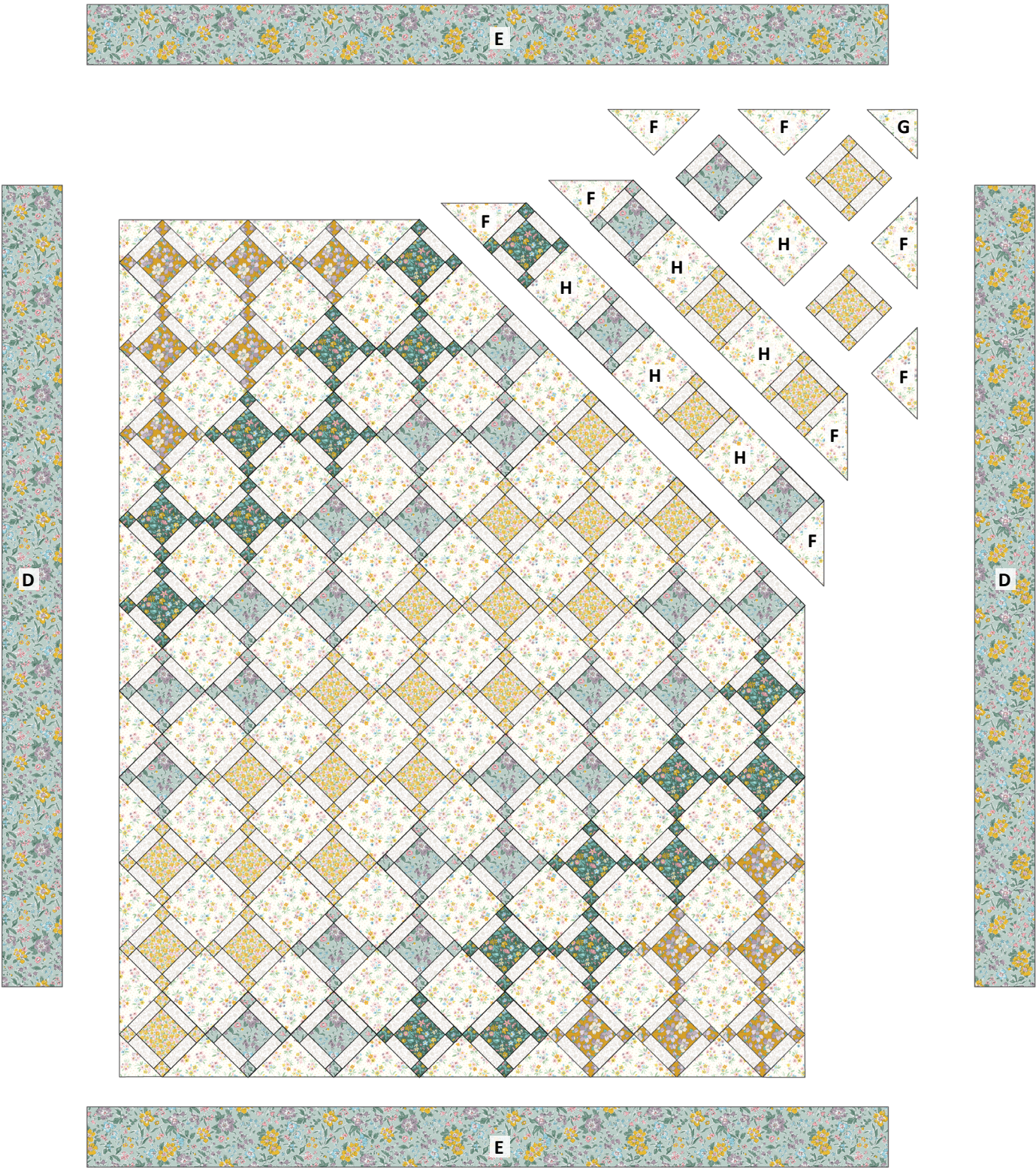
FINISHING INSTRUCTIONS

7. Finish the quilt by layering the quilt top, batting, and backing. Baste the quilt layers together and quilt as desired. Sew the Anemone Charm binding strips together end-to-end. Then bind the trimmed, finished quilt using your favorite binding method.

Enjoy and share your quilt using the hashtags [#heirloomspringfabric](#), [#springtimequilt](#), [#rileyblakedesigns](#), and [#iloverileyblake](#).

SPRINGTIME

QUILT LAYOUT DIAGRAM



67" × 81 ¼"