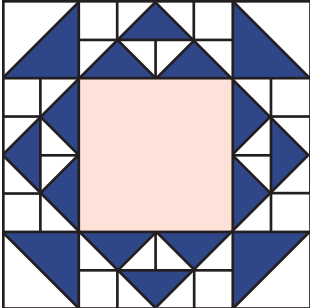




Grandmother's Favorite

Block Pattern

Fat Quarter Shop Exclusive

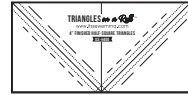


Unfinished size: 16 1/2" x 16 1/2".



Pattern for Tablerunner, Lap,
Twin & Queen size quilt available
at www.FatQuarterShop.com.



Cutting Instructions	One Block
Block Print	1 - 5 1/2" x 11" rectangle (A) 3 - 5 1/4" squares (B)
Accent Print	1 - 8 1/2" square (C)
Background	1 - 5 1/2" x 11" rectangle (D) 12 - 2 7/8" squares (E) 8 - 2 1/2" squares (F)
4" Half Square Triangle Paper Triangles on a Roll #H400	1 - one by two section (2 squares) 

Use 1/4" seams and press as arrows indicate throughout.

Block Assembly:

With right sides facing, layer a Fabric D rectangle with a Fabric A rectangle.

Place a one by two section of 4" Finished Half Square Triangle Paper on top and pin in place.

Set stitch length to 1.5 and sew on the dotted lines.

Cut apart on the solid lines.

Half Square Triangle Unit should measure 4 1/2" x 4 1/2".



Make 4.

#Grandmothersfavoritequilt

www.FatQuarterShop.com



© 2020 Fat Quarter Shop, LLC. All rights reserved. Duplication of any kind is prohibited. This pattern may be used for personal purposes only and may not be reproduced without the express written permission from Fat Quarter Shop. This pattern may not be used for commercial purposes. This pattern may only be hosted, accessed, and downloaded from www.FatQuarterShop.com.



Grandmother's Favorite

Block Pattern

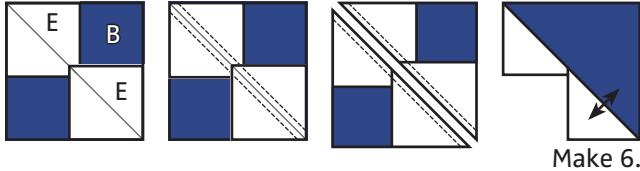
Fat Quarter Shop Exclusive

Draw a diagonal line on the wrong side of the Fabric E squares.

With right sides facing, layer two Fabric E squares on opposite corners of a Fabric B square.

Stitch $\frac{1}{4}$ " from each side of the drawn lines.

Cut apart on the marked line, to make the Partial Flying Geese Unit.



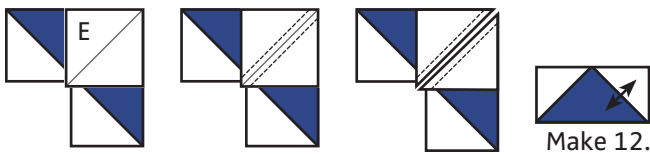
With right sides facing, layer a Fabric E square on the top right corner of a Partial Flying Geese Unit.

Pay close attention to square placement.

Stitch $\frac{1}{4}$ " from each side of the drawn line.

Cut apart on the marked line.

Flying Geese Unit should measure $2\frac{1}{2}$ " x $4\frac{1}{2}$ ".



Assemble two Fabric F squares and three Flying Geese Units.

Favorite Unit should measure $4\frac{1}{2}$ " x $8\frac{1}{2}$ ".



Assemble Block.

Grandmother's Favorite Block should measure $16\frac{1}{2}$ " x $16\frac{1}{2}$ ".

