

# GHOUL FRIENDS PANEL QUILT

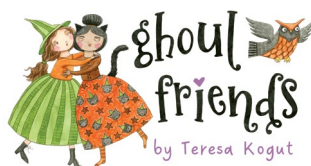
Riley Blake  
DESIGNS®



51 1/2" x 62"



= Confident Beginner



04/01/2025



# GHOUL FRIENDS PANEL QUILT

## FINISHED QUILT SIZE 51 ½" × 62"

Please read all instructions before beginning this project.  
Yardage calculated using a 42" usable width of fabric.

Pattern designed by The RBD Designers.

## GENERAL INSTRUCTIONS

Please check [www.rileyblakedesigns.com/pattern-updates](http://www.rileyblakedesigns.com/pattern-updates) or scan the QR Code for any revisions before starting this project. This pattern requires a basic knowledge of quilting techniques and terminology. The quilt and block diagrams portrayed are virtual images. The layout and look of your project may differ when using actual fabric. It is not recommended to prewash fabric before cutting and assembling.



Always verify your panel size before beginning. If your panel measurements differ from those given in the pattern, trim to the desired size or use coping strips to alter the size of your panel. If coping strips are needed, add oversized, coordinating strips of fabric to the necessary edges of the panel, then trim to the size specified in the pattern.

WOF = Width of Fabric

RST = Right Sides Together

## FABRIC REQUIREMENTS

All fabrics from the Ghoul Friends collection unless stated otherwise.

(1) P16058-PANEL Ghoul Friends Panel

### 10" Square Each:

C16050-GREEN Main  
C16051-BLACK Gourds Toss  
C16052-PURPLE Boots Toss  
C16053-BLACK Pumpkin Vine  
C16054-PURPLE Stars and Moon  
C16055-BLACK Stars  
C16055-ORANGE Stars

### ¼ Yard Each:

C16053-GREEN Pumpkin Vine  
C16054-BLACK Stars and Moon

### ⅓ Yard Each:

C16056-ORANGE Stripes  
C16057-ORANGE Dots

## Additional Fabrics:

¾ yard C16050-BLACK Main  
1 yard C200-02 CREAM Shade  
½ yard C16056-MULTI Stripes (binding)

## OTHER SUPPLIES

### Basic Sewing Supplies

1 ¾ yards WB16017-BLACK Web Costume Maker's Act II  
(wide back backing)

Batting

Lightweight Fusible Web

## CUTTING INSTRUCTIONS

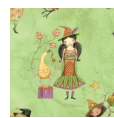
When cutting fabrics, use a straight edge ruler and rotary cutter. Measurements include ¼" seam allowance. Label, allocate, and organize all cuts as noted. Templates are on page 5.



### Ghoul Friends Panel

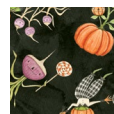
Fussy cut (1) 33 ½" × 42 ½" Panel rectangle, centered over the motif.\*

*\*Note: If the panel motif does not reach the edge of the required cut, add coping strips first and then trim to the required size.*



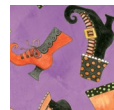
### Green Main

Cut (1) Medium Star Template



### Black Gourds Toss

Cut (1) Extra-Large Star Template



### Purple Boots Toss

Cut (1) Reversed Medium Star Template

# GHOUL FRIENDS PANEL QUILT



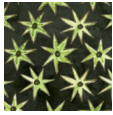
## Black Pumpkin Vine

Cut (1) Reversed Large Star Template



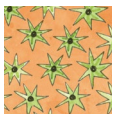
## Purple Stars and Moon

Cut (1) Reversed Extra-Large Star Template



## Black Stars

Cut (1) Large Star Template



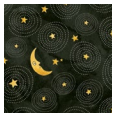
## Orange Stars

Cut (1) Reversed Extra-Large Star Template  
Cut (1) Reversed Small Star Template



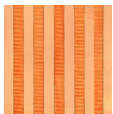
## Green Pumpkin Vine

Cut (1)  $3\frac{1}{4}$ " x WOF strip. Subcut:  
(2)  $3\frac{1}{4}$ " x  $9\frac{1}{2}$ " rectangles. Label as A.  
Cut (1) Large Star Template



## Black Stars and Moon

Cut (2)  $3\frac{1}{2}$ " x WOF strips. Subcut:  
(2)  $3\frac{1}{2}$ " x  $32\frac{1}{2}$ " rectangles. Label as B.  
From remainder of strips, subcut:  
(2)  $1\frac{1}{2}$ " x  $9\frac{1}{2}$ " rectangles. Label as C.



## Orange Stripes

Cut (2)  $2\frac{1}{2}$ " x WOF strips. Piece together end-to-end; subcut:  
(1)  $2\frac{1}{2}$ " x  $51\frac{1}{2}$ " strip. Label as D.  
Cut (1) Reversed Large Star Template



## Orange Dots

Cut (2)  $3\frac{1}{2}$ " x WOF strips. Subcut:  
(2)  $3\frac{1}{2}$ " x  $32\frac{1}{2}$ " rectangles. Label as E.  
From remainder of strips, subcut:  
(2)  $1\frac{1}{2}$ " x  $9\frac{1}{2}$ " rectangles. Label as F.  
Cut (1) Small Star Template



## Black Main

Cut (2)  $5\frac{1}{2}$ " x WOF strips. Piece together end-to-end; subcut:  
(1)  $5\frac{1}{2}$ " x  $51\frac{1}{2}$ " strip. Label as G.



## Cream Shade

Cut (2)  $9\frac{1}{2}$ " x WOF strips. Subcut:  
(2)  $9\frac{1}{2}$ " x  $37\frac{3}{4}$ " rectangles. Label as H.  
Cut (2) 7" x WOF strips. Piece together end-to-end; subcut:  
(1) 7" x  $51\frac{1}{2}$ " strip. Label as I.



## Multi Stripes

Cut (6)  $2\frac{1}{2}$ " x WOF strips for binding.

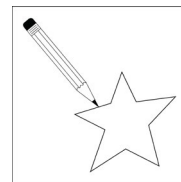
## SEWING TECHNIQUES

Sew all seams RST and with a  $\frac{1}{4}$ " seam allowance unless stated otherwise. Refer to the Quilt Layout Diagram for placement of the prints. Press seams as desired unless stated otherwise. Dimensions listed in steps are unfinished sizes.

## APPLIQUÉ PREPARATION

Instructions are provided for raw edge fusible appliqué. Seam allowances are not included on the Templates; add them if using another applique technique. To prepare and cut the appliqué pieces:

- Place the Template right side up on a light table or window (or right side down for reversed shapes).
- Trace the individual labeled shapes onto the paper side of the fusible web, leaving at least  $\frac{1}{4}$ " of space around each traced shape.
- Roughly cut outside the drawn line of each shape, leaving at least  $\frac{1}{4}$ " of fusible web. Note: For softer finished appliqué, also remove the interior of the drawn shape, leaving at least  $\frac{1}{2}$ " of fusible web inside the drawn line. Discard or reuse any excess for smaller shapes.
- Fuse the traced shapes to the WRONG side of the specified fabric following the manufacturer's instructions. Once cool, cut out each shape exactly on the drawn lines. Do NOT remove the paper backing until ready to fuse in place.

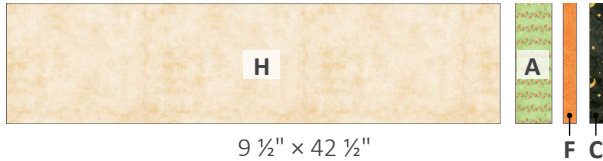


# GHOUL FRIENDS PANEL QUILT

## QUILT ASSEMBLY

1. Sew (1) **H**-rectangle, (1) **A**-rectangle, (1) **F**-rectangle, and (1) **C**-rectangle as shown below to make (1) Side Border. Repeat to make a second Side Border.

Make (2)



9 1/2" x 42 1/2"

2. Sew (1) Side Border to each side of the Panel. Next, add (1) **I**-strip to the top as shown below to make the Quilt Center.



51 1/2"

3. Sew (1) **E**-rectangle and (1) **B**-rectangle together. Repeat to make a second strip set. Next, cut the strip sets into (17) 3 1/2"-wide segments.

Make (2)



6 1/2" x 32 1/2"

Make (17)



3 1/2"

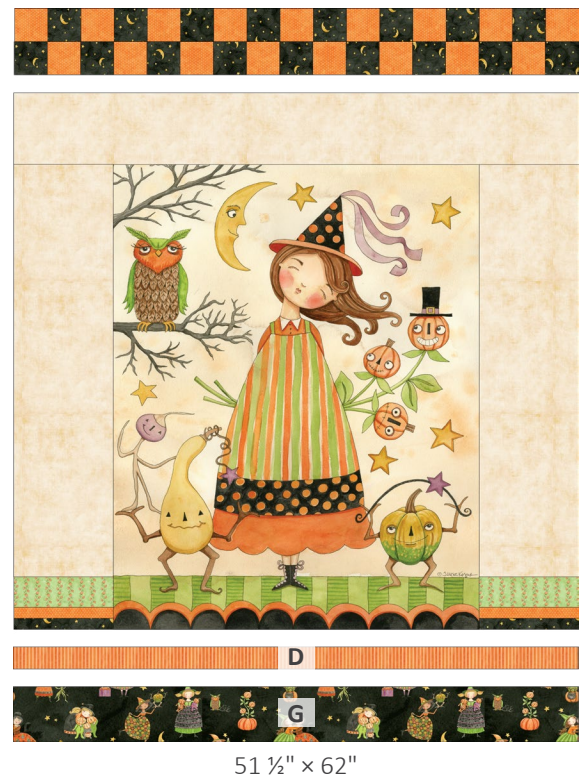
4. Sew (17) Step 3 segments into a row as shown below, rotating every other segment 180°, to make (1) Top Border.



6 1/2" x 51 1/2"

5. Arrange (1) Top Border, the Quilt Center, (1) **D**-strip, and (1) **G**-strip as shown below. Sew the pieces together to complete the quilt top.

## QUILT LAYOUT DIAGRAM



51 1/2" x 62"

6. Arrange the Star Templates on the quilt top, using the cover image as a guide.
7. Remove the paper backing from each template. Fuse all the appliqué shapes in place following the manufacturer's instructions. Once cool, stitch around the edge of each shape using a straight or small zigzag stitch in your choice of matching, contrasting, or invisible thread.

# GHOUL FRIENDS PANEL QUILT

## FINISHING INSTRUCTIONS

8. Layer the quilt top, batting, and backing. Baste the quilt layers together and quilt as desired. Sew the Multi Stripes binding strips together end-to-end. Then bind the trimmed, finished quilt using your favorite binding method.

Enjoy and share your quilt using the hashtags: [#ghoulfriendsfabric](#), [#ghoulfriendspanelquilt](#), [#rileyblakedesigns](#), and [#iloverileyblake](#).

