

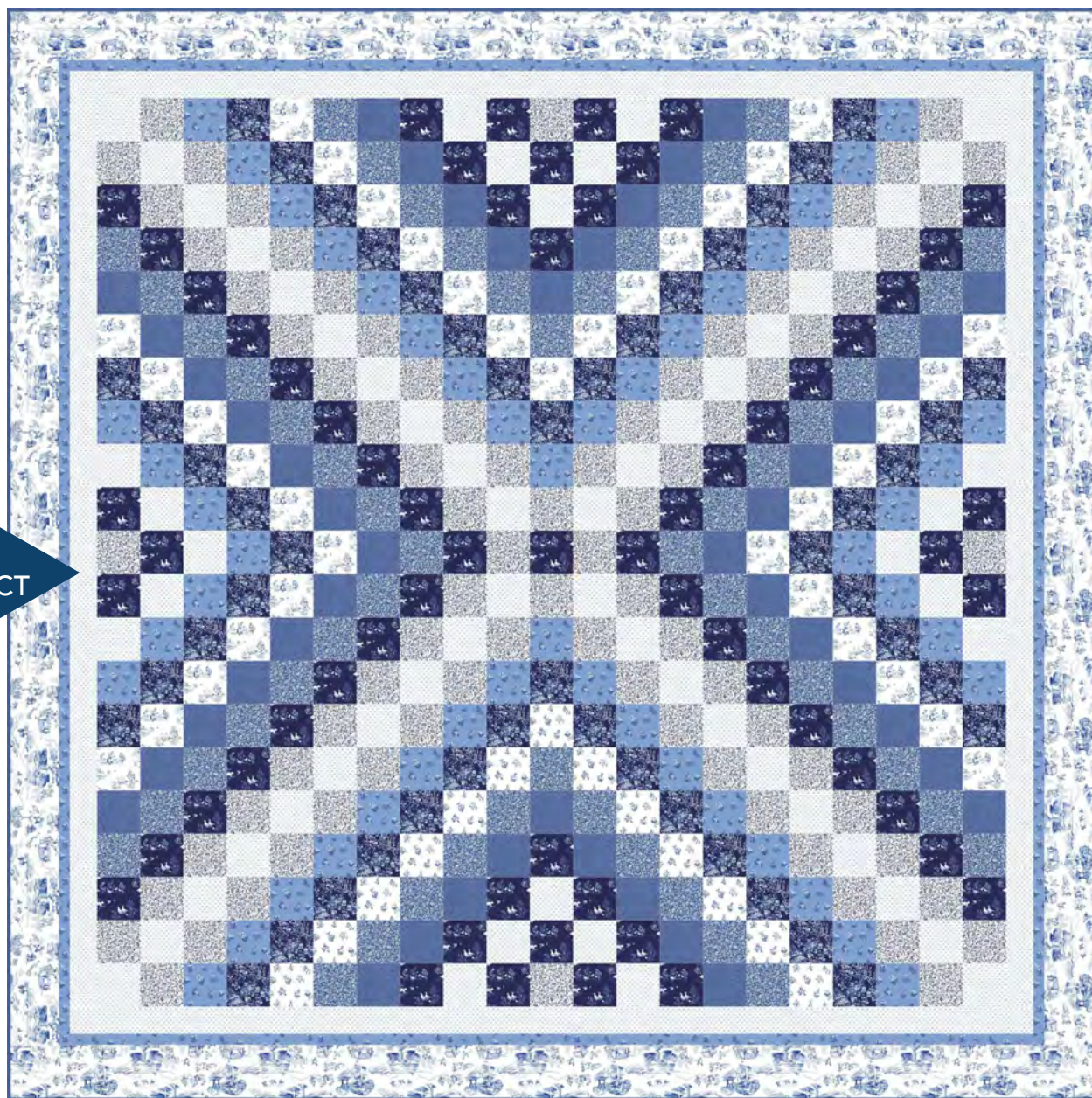
Blue Cluster

Designed by Wendy Sheppard

Featuring *English Garden* by Clare Therese Gray

SIZE: 101" x 101"

FREE
PROJECT



THIS IS A DIGITAL REPRESENTATION OF THE QUILT TOP, FABRIC MAY VARY.

PLEASE NOTE: BEFORE MAKING YOUR PROJECT, CHECK FOR ANY PATTERN UPDATES AT WINDHAMFABRICS.COM'S FREE PROJECTS SECTION.



Blue Cluster

Cutting Notes: Mark and store your cutting pieces, as this will make matching fabrics easier when piecing begins. Be sure to read the entire pattern before you begin.

KEY	FABRIC	SKU	YD	CUTTING INSTRUCTIONS
A		51830-1 White	1 3/4	OUTER BORDER: (10) 5 1/2" x WOF strips. Piece strips and subcut (2) 5 1/2" x 91 1/2" strips and (2) 5 1/2" x 101 1/2" strips.
B		51831-2 Navy	7/8	QUILT CENTER: (6) 4 1/2" x WOF strips. Subcut (48) 4 1/2" squares.
C		51832-1 White	7/8	QUILT CENTER: (6) 4 1/2" x WOF strips. Subcut (48) 4 1/2" squares.
D		51832-2 Navy	1 1/8	QUILT CENTER: (8) 4 1/2" x WOF strips. Subcut (61) 4 1/2" squares.
E		51833-3 Blue	1 1/4	QUILT CENTER: (6) 4 1/2" x WOF strips. Subcut (48) 4 1/2" squares. INNER BORDER #2: (9) 1 1/2" x WOF strips. Piece strips and subcut (2) 1 1/2" x 89 1/2" strips and (2) 1 1/2" x 91 1/2" strips.
F		51834-1 White	1 3/8	QUILT CENTER: (9) 4 1/2" x WOF strips. Subcut (80) 4 1/2" squares.
G		51834-3 Blue	7/8	QUILT CENTER: (6) 4 1/2" x WOF strips. Subcut (52) 4 1/2" squares.
H		51835-1 White	1 7/8	QUILT CENTER: (8) 4 1/2" x WOF strips. Subcut (60) 4 1/2" squares. INNER BORDER #1: (9) 3" x WOF strips. Piece strips and subcut (2) 3" x 84 1/2" strips and (2) 3" x 89 1/2" strips.
I		40171-23 Blue/White	3/4	QUILT CENTER: (5) 4 1/2" x WOF strips. Subcut (44) 4 1/2" squares.
J		51835-2 Navy FOR BINDING	7/8	BINDING: (10) 2 1/4" x WOF strips. Piece strips together to form a continuous binding strip.
		Backing	9	108" x 108" piece of batting.

PROJECT DISCLAIMER: Every effort has been made to ensure that all projects are error free. All the information is presented in good faith, however, no warranty can be given nor results guaranteed. Therefore, we assume no responsibility nor damages that may occur when referring to this pattern. When errors are brought to our attention, we make every effort to correct and post a revision as soon as possible. We suggest you check windhamfabrics.com for pattern updates and to test the pattern prior to making the project. Test templates first, before cutting all the pieces. Free projects are not for resale.



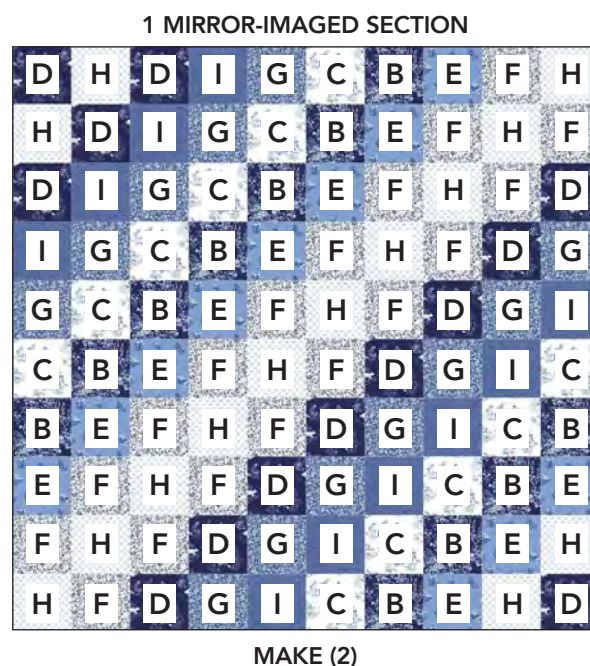
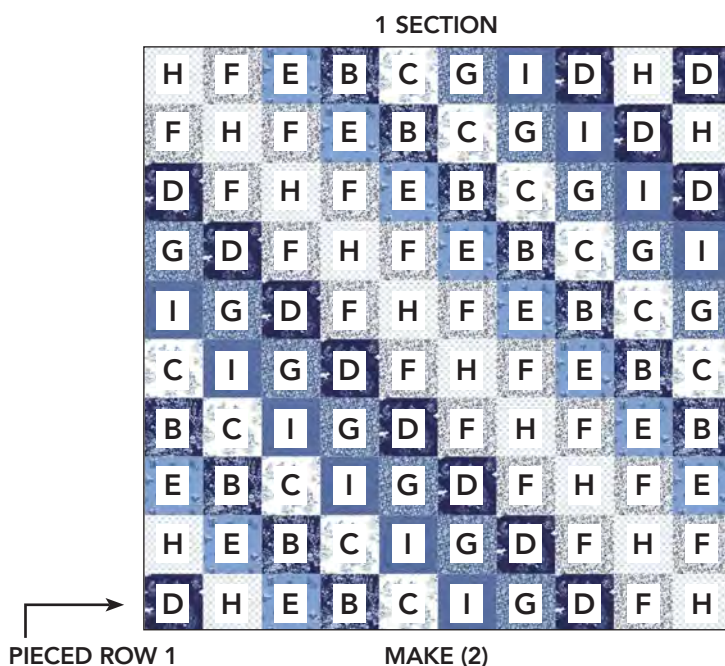
Blue Cluster

Quilt Center Assembly

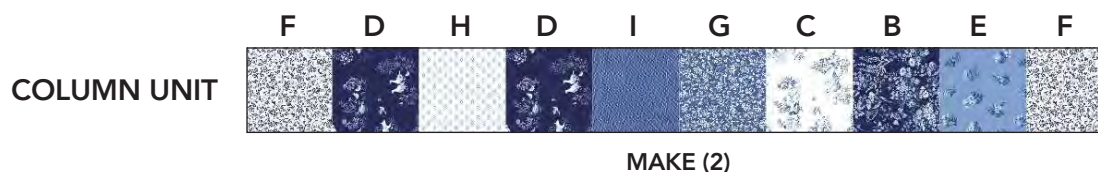
1. *Pieced sections.* Sections are constructed by sewing together (10) unique pieced rows. Arrange and sew (10) 4½" squares to make a pieced row, as shown below. Make a total of (10) unique pieced rows. Refer to quilt image for fabric placement guide on the additional pieced rows.



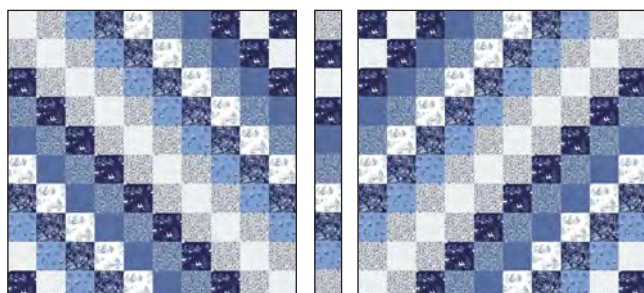
2. Sew together (10) pieced rows to make (1) section. Make (2) sections. Repeat to make (2) mirror-imaged sections.



3. Arrange and sew together (10) 4½" squares to make a column unit. Make (2) column units.



4. Sew pieced section to the left and mirror-imaged section to the right of column unit to complete (1) quilt half. Repeat to make (2) quilt halves.



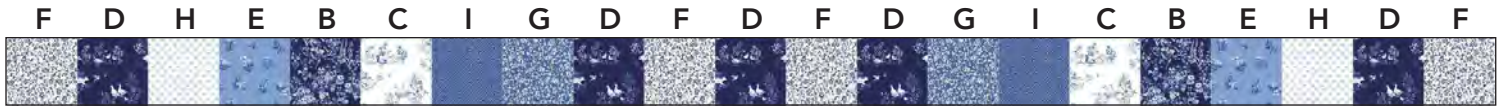
MAKE (2)



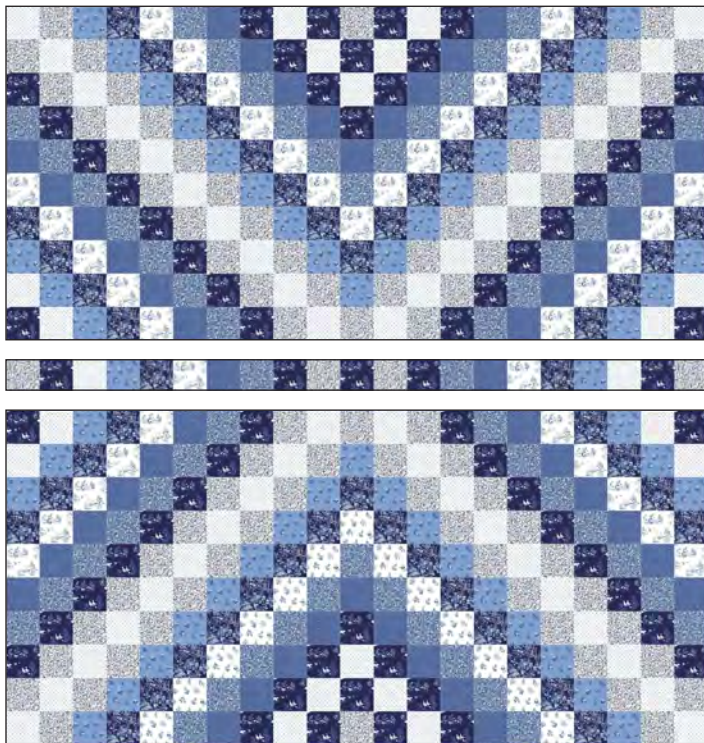
Blue Cluster

5. Arrange and sew together (21) $4\frac{1}{2}$ " squares to make a pieced row, as shown below.

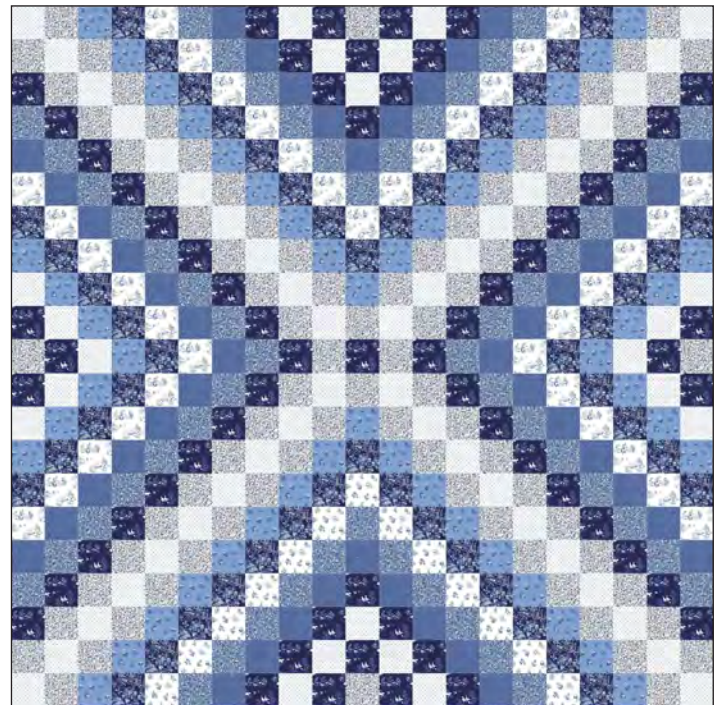
PIECED ROW



6. Sew quilt halves to the opposite long sides of previously sewn pieced row to complete quilt center.



QUILT CENTER



Quilt Top Assembly

USE THE QUILT ASSEMBLY DIAGRAM ON PAGE 4 AS REFERENCE.

7. *Inner border #1.* Sew (2) $3" \times 84\frac{1}{2}"$ **Fabric H** strips to the left and right sides of quilt center, followed by (2) $3" \times 89\frac{1}{2}"$ **Fabric H** strips to the top and bottom of quilt center.

8. *Inner border #2.* Sew (2) $1\frac{1}{2}" \times 89\frac{1}{2}"$ **Fabric E** strips to the left and right sides of quilt center, followed by (2) $1\frac{1}{2}" \times 91\frac{1}{2}"$ **Fabric E** strips to the top and bottom of quilt center.

9. *Outer border.* Sew (2) $5\frac{1}{2}" \times 91\frac{1}{2}"$ **Fabric A** strips to the left and right sides of quilt center, followed by (2) $5\frac{1}{2}" \times 101\frac{1}{2}"$ **Fabric A** strips to the top and bottom of quilt center to complete quilt top.

Finishing

10. With the backing fabric laying taut, place batting and then quilt top to form quilt sandwich.

11. Baste sandwich. Quilt as desired.

12. Bind with **Fabric J** to finish quilt.



Blue Cluster

QUILT ASSEMBLY DIAGRAM

