

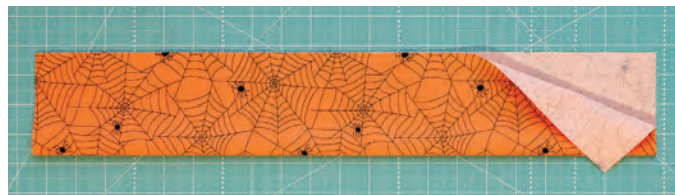
# Trick or Treat Carry Along Bag

## FREE PATTERN

Trick or Treat Carry Along Bag featured Dot Dot Boo  
by Me and My Sister Designs for Moda Fabrics

### Handles

Fold a Handle rectangle in half, lengthwise. Press.



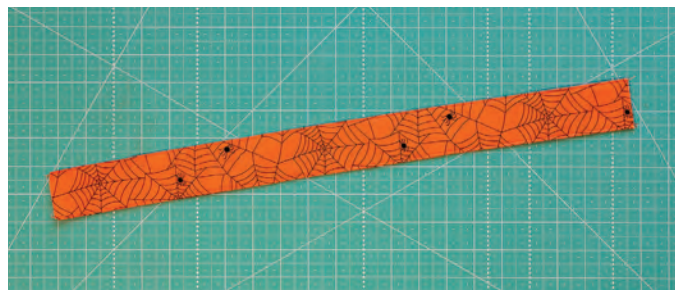
Open and fold each edge in to meet the fold mark in the middle. Press.

Fold in half again. Press.



Topstitch an  $\frac{1}{8}$ " away from edge on both sides of the Handle Unit.

Make two Handle Units.



Finished Size: 13  $\frac{1}{4}$ " x 15  $\frac{3}{4}$ "

Designed by Leslie Rutland of the Seasoned Homemaker  
for Fat Quarter Shop. ([www.SeasonedHomemaker.com](http://www.SeasonedHomemaker.com))

### Fabric Requirements

$\frac{1}{2}$  yard for Body (SKU# 22330-25)

1 yard for Top, Lining and Handles (SKU# 22331-13)

$\frac{1}{4}$  yard for Flange (SKU# 22332-12)

### Cutting

From Body fabric cut:

2 - 12" x 16" rectangles (Body)

From Top, Lining and Handles fabric cut:

2 - 16" squares (Lining)

2 - 7" x 21" strips (Handles)

2 - 4  $\frac{1}{2}$ " x 16" rectangles (Top)

From Flange fabric cut:

2 - 3" x 16" rectangles (Flange)



1-866-826-2069

[www.FatQuarterShop.com](http://www.FatQuarterShop.com)

[www.YouTube.com/FatQuarterShop](http://www.YouTube.com/FatQuarterShop)





# Trick or Treat Carry Along Bag

## Bag Assembly

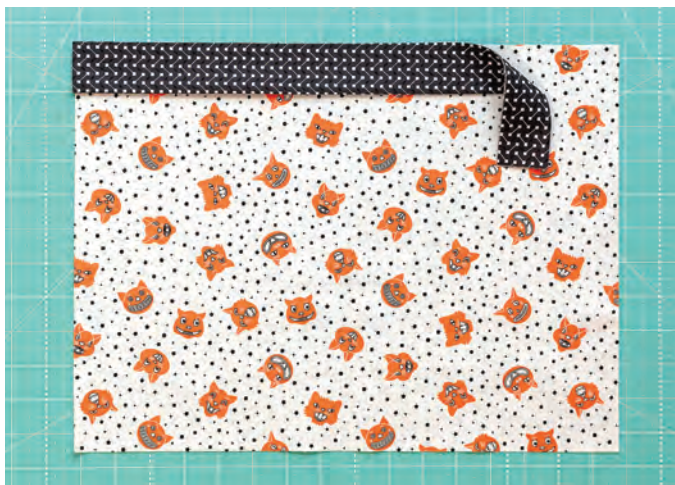
With wrong sides together, fold Flange strip in half lengthwise and press.

Make two Folded Flange Strips.

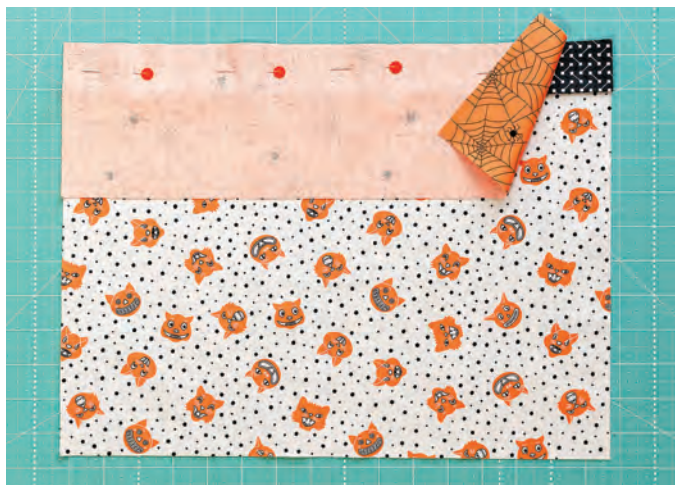


Matching raw edges, layer a Folded Flange Strip on the top of a Body rectangle.

Make two Flange/Body Units.

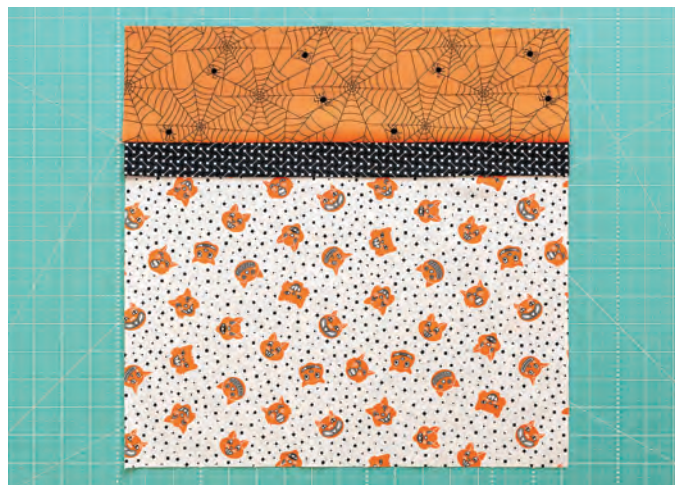


With right sides together, layer a Top rectangle with a Flange/Body Unit. Pin in place.



Using a  $\frac{1}{4}$ " seam, stitch along the top edge. Press toward the Top.

Make two Half Bag Body Units



With right sides together, layer the Half Bag Body Units together matching seams and Flanges. Pin in place.

Stitch along the sides and bottom, leaving the top open.

Make one Bag Body Unit.

Repeat with the Lining. Make one Bag Lining Unit.





# Trick or Treat Carry Along Bag

Fold the bottom corner of the Bag Body Unit so that it creates a triangle. Match the side and bottom seams. Pin in place.

Draw a line 2" away from the pointed edge.

Repeat on the other end of the Bag Body Unit.

Repeat with Bag Lining Unit.



Turn the Bag Body Unit right side out and press. To iron the box corners, fold each seam flat and press.

Repeat with the Bag Lining Unit.



Matching raw edges, layer a Handle Unit on top of the Bag Body Unit. Position each end of the Handle Unit 3 1/2" from the side seams with approximately 5" in between.

Pin in place and stitch using a 1/4" seam.

Repeat on the other side of the Bag Body Unit with the other Handle Unit.

Stitch on the drawn line and trim 1/4" away from the seam.

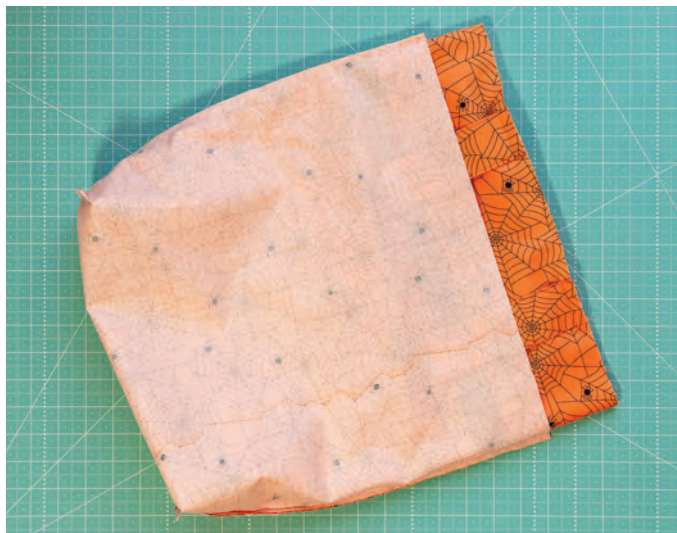
Repeat on the other end of the Bag Body Unit.

Repeat with Bag Lining Unit.



# Trick or Treat Carry Along Bag

With right sides facing, place the Bag Body Unit inside the Bag Lining Unit.

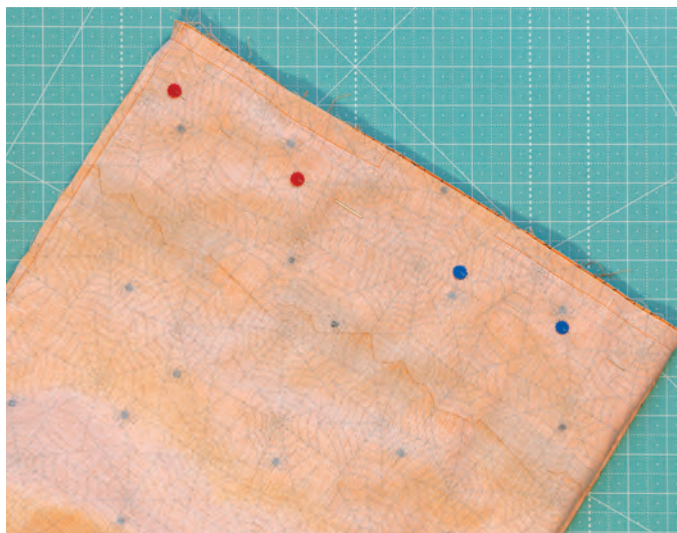


Pull the Bag Body Unit through the opening between the Handles.



Matching raw edges and side seams, pin the Bag Lining Unit and Bag Body Unit together.

Using a  $\frac{1}{2}$ " seam, stitch around the outer edge leaving a 3" opening between one of the Handles for turning.



Tuck the Bag Lining Unit inside.

Press the top edge, making sure the seam edges are tucked in.

Topstitch  $\frac{1}{8}$ " away from the edge all around the top edge of the bag.



Copyright 2018 Fat Quarter Shop, LLC. All rights reserved. Duplication of any kind is prohibited.

This pattern may be used for personal purposes only and may not be reproduced without the express written permission from the Fat Quarter Shop. These patterns may not be used for commercial purposes.