

## This image displays a highly detailed and colorful quilt pattern, likely a traditional patchwork design. The pattern is composed of numerous small, irregular geometric shapes, primarily squares and triangles, which are arranged in a complex, non-repeating grid. The color palette is rich and varied, featuring deep blues, vibrant greens, bright reds, sunny yellows, and stark whites, all set against a dark background. The shapes are often filled with intricate floral or abstract patterns, creating a dense and visually stimulating effect. The overall composition is balanced yet dynamic, with the various colors and patterns interlocking to form a cohesive and beautiful textile design.



# Shuttered

QUILT DESIGNED BY AGFstudio

THIS PATTERN IS FABRIC WONDERS FRIENDLY

fabric  
wonders  
COLLECTION PRE-CUTS



10"

10W-OHM 42 PIECES

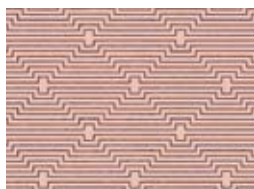
TROUVAILLE

FABRICS DESIGNED BY AGF STUDIO

STROKE OF LUCK



TRV-58125  
MOON GLOW GLISTEN



TRV-58127  
FOUND PATHS ROSE



TRV-58126  
DANCING LEAVES TEAL



TRV-58122  
ANEMONE FALLS



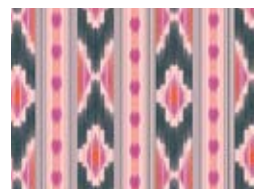
TRV-58125  
MOON GLOW GLISTEN



TRV-58127  
FOUND PATHS ROSE



TRV-58126  
DANCING LEAVES TEAL



TRV-58122  
ANEMONE FALLS

WONDERMENT



TRV-58125  
MOON GLOW GLISTEN



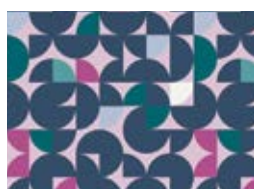
TRV-58127  
FOUND PATHS ROSE



TRV-58126  
DANCING LEAVES TEAL



TRV-58122  
ANEMONE FALLS



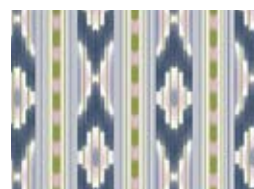
TRV-58125  
MOON GLOW GLISTEN



TRV-58127  
FOUND PATHS ROSE



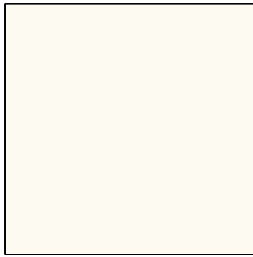
TRV-58126  
DANCING LEAVES TEAL



TRV-58122  
ANEMONE FALLS



FEEL THE DIFFERENCE © 2020 Courtesy of Art Gallery Quilts LLC. All Rights Reserved.



PE-408  
WHITE LINEN



FINISHED SIZE | 69" x 80½"

## FABRIC REQUIREMENTS

Fabric <b>A</b>	TRV-58120	(3) 10" squares
Fabric <b>B</b>	TRV-58121	(3) 10" squares
Fabric <b>C</b>	TRV-58122	(3) 10" squares
Fabric <b>D</b>	TRV-58123	(2) 10" squares
Fabric <b>E</b>	TRV-58124	(2) 10" squares
Fabric <b>F</b>	TRV-58125	(2) 10" squares
Fabric <b>G</b>	TRV-58126	(3) 10" squares
Fabric <b>H</b>	TRV-58127	(2) 10" squares
Fabric <b>I</b>	TRV-68120	(3) 10" squares
Fabric <b>J</b>	TRV-68121	(3) 10" squares
Fabric <b>K</b>	TRV-68122	(2) 10" squares
Fabric <b>L</b>	TRV-68123	(3) 10" squares
Fabric <b>M</b>	TRV-68124	(3) 10" squares
Fabric <b>N</b>	TRV-68125	(3) 10" squares
Fabric <b>O</b>	TRV-68126	(3) 10" squares
Fabric <b>P</b>	TRV-68128	(2) 10" squares
Fabric <b>Q</b>	PE-408	3½ yd.

### BACKING FABRIC

TRV-58123 5½ yd. (Suggested)

### BINDING FABRIC

Fabric **Q** PE-408 (Included)

## CUTTING DIRECTIONS

¼" seam allowances are included.  
WOF means width of fabric.

- Forty two (42) 10" squares from fabric **Q**.

## CONSTRUCTION

*Sew all rights sides together with ¼" seam allowance.*

- Take every 10" square from fabrics **A - P** and align them face to face with one (1) 10" square from fabric **Q**.
- Join them stitching at ¼" from the right and left edges.
- Cut on the diagonal following diagram 1.



DIAGRAM 1

- You will get two (2) quarter square triangles.
- Open them and press the seam towards the dark color.
- Join the two triangles making a big hourglass block.

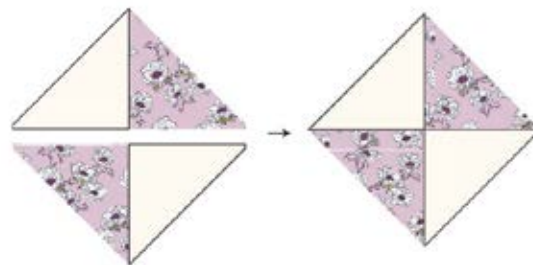


DIAGRAM 2

- Trim the four edges of the block so if measures 13" on each side.

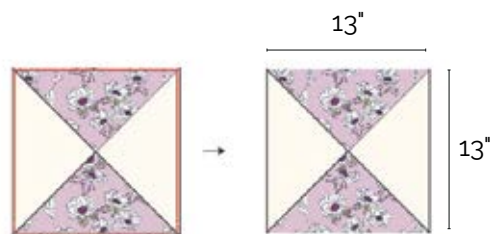


DIAGRAM 3

- Cut 3" from the top and bottom edge of the block.
- Cut 3" from the right and left edges of the three resulting rectangles.

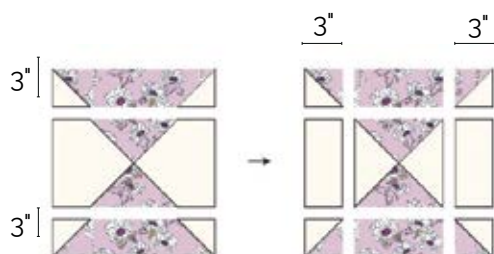


DIAGRAM 4

- Turn the 7" hourglass square 90 degrees, so the white fabric is next to a rectangle with a print.
- Turn the four (4) 3" half square triangle squares 180 degrees, so the white fabric is next to a rectangle with a print.
- For fabric placement follow diagram 5.

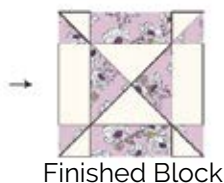
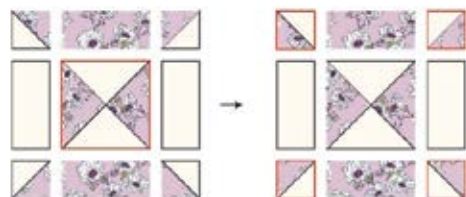


DIAGRAM 5

- As a result you will have three (3) blocks from fabrics **A, B, C, G, I, J, L, M, N**, and **O**, and two (2) blocks from fabrics **D, E, F, H, K**, and **P**.

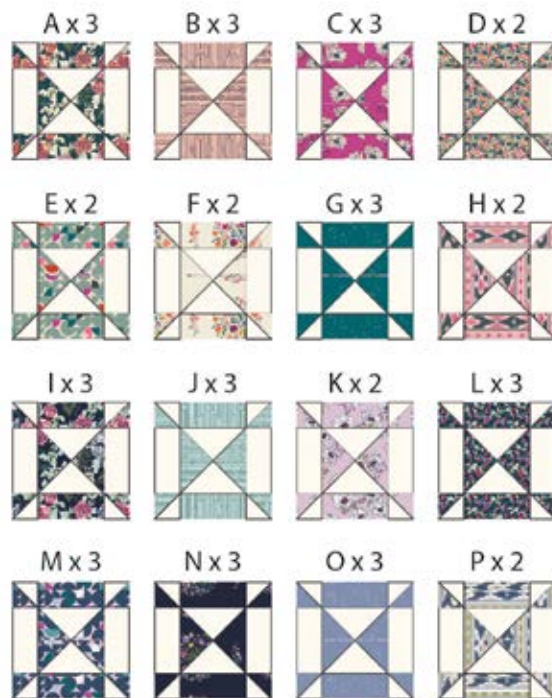


DIAGRAM 6

- Join the blocks into the following rows:

Row 1: **O - M - N - L - I - J**

Row 2: **C - G - A - B - E - D**

Row 3: **H - F - P - K - O - M**

Row 4: **N - L - I - J - C - G**

Row 5: **A - B - E - D - H - F**

Row 6: **P - K - O - M - N - L**

Row 7: **I - J - C - G - A - B**

- For fabric placement and attachment follow diagram 7.

- When joining the blocks make sure the white fabric is always next to a fabric with print.



DIAGRAM 6



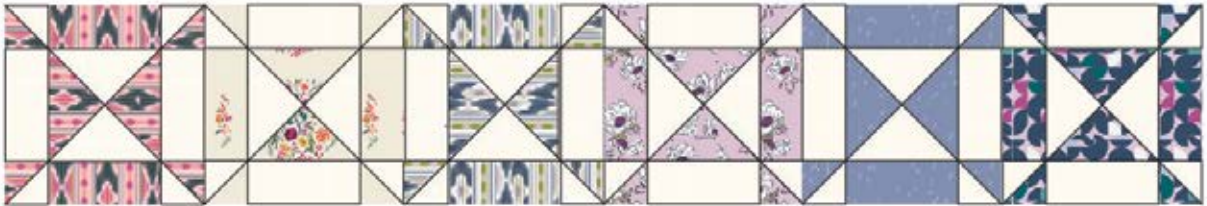
Row 1



Row 2



Row 3



Row 4



Row 5



Row 6



Row 7



DIAGRAM 7

- Join the rows into the quilt top.


## QUILT ASSEMBLY

*Sew rights sides together.*

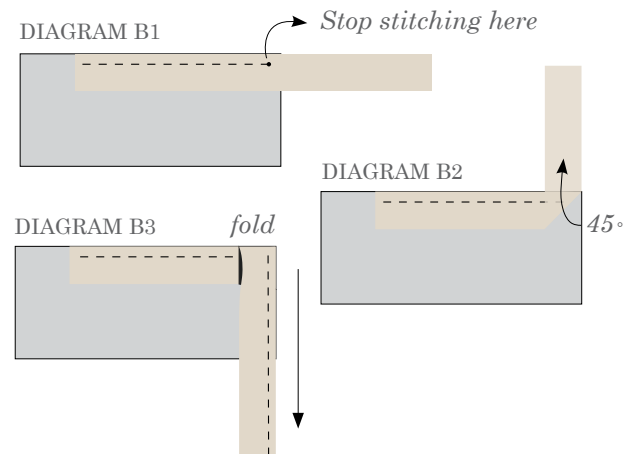
- Place BACKING FABRIC on a large surface wrong side up. Stretch it with masking tape against that surface.
- Place BATTING on top of backing fabric.
- Place TOP on top of the batting with right side facing up. Smooth away wrinkles using your hands.
- Pin all layers together and baste with basting thread, using long stitches. You can also use safety pins to join the layers.
- Machine or hand quilt starting at the center and working towards the corners. Remember that quilting motifs are a matter of personal preference. Have fun choosing yours!
- After you finished, trim excess of any fabric or batting, squaring the quilt to proceed to bind it.

## BINDING

*Sew rights sides together.*

- Cut enough strips  $1\frac{1}{2}$ " wide by the width of the fabric  to make a final strip 309" long. Start sewing the binding strip in the middle of one of the sides of the quilt, placing the strip right side down and leaving an approximated 5" tail. Sew with  $\frac{1}{4}$ " seam allowance (using straight stitch), aligning the strip's raw edge with the quilt top's raw edge.
- Stop stitching  $\frac{1}{4}$ " before the edge of the quilt (DIAGRAM B 1). Clip the threads. Remove the quilt from under the machine presser foot. Fold the strip in a motion of  $45^\circ$  and upward, pressing with your fingers (DIAGRAM B2). Hold this fold with your finger, bring the strip down in line with the next edge, making a horizontal fold that aligns with the top edge of the quilt (DIAGRAM B3). Start sewing at  $\frac{1}{4}$ " of the border, stitching all the layers. Do the same in the four corners of the quilt.

- Stop stitching before you reach the last 5 or 6 inches. Cut the threads and remove the quilt from under the machine presser foot. Lay the loose ends of the binding flat along the quilt edge, folding the ends back on themselves where they meet. Press them together to form a crease. Using this crease as the stitching line, sew the two open ends of the binding with right sides together (you can help yourself marking with a pencil if the crease is difficult to see).
- Trim seam to  $\frac{1}{4}$ " and press open. Complete the sewing. Turn binding to back of the quilt, turn raw edge inside and stitch by hand using blind stitch.



XXXXXXXXXXXXXXXXXXXXXXXXXXXXXXXXXXXX

*Congratulations*  
*& enjoy*

XXXXXXXXXXXXXXXXXXXXXXXXXXXXXXXXXXXX



[artgalleryfabrics.com](http://artgalleryfabrics.com)

NOTE: While all possible care has been taken to ensure the accuracy of this pattern, We are not responsible for printing errors or the way in which individual work varies.

Please read instructions carefully before starting the construction of this quilt. If desired, wash and iron your fabrics before starting to cut.

© 2020 Courtesy of Art Gallery Quilts LLC. All Rights Reserved.