

X  
X  
X  
X  
X  
X  
X  
X  
X  
X  
X  
X

## This image shows a quilt panel with a dark navy blue background. It features three large, stylized floral motifs arranged in a triangular pattern. Each motif is composed of many leaf-shaped segments radiating from a central point. The segments are made of various fabrics, including solid colors like red, yellow, pink, and green, as well as patterned fabrics like polka dots, stripes, and floral prints. The segments are arranged in a way that creates a sense of depth and movement, with some segments overlapping others. The overall effect is a vibrant and intricate design.

XXXXXXXXXXXXXXXXXXXX





# Petal Sparks

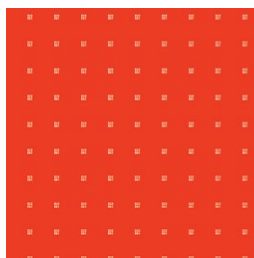
QUILT DESIGNED BY AGFstudio



FABRICS DESIGNED BY AGF STUDIO



**FWR-34884**  
POPPY HILL



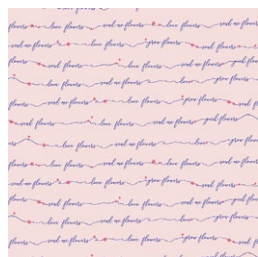
**FWR-34883**  
SEED PACKETS



**FWR-34882**  
FLOWER TIES



**FWR-34885**  
DANCING DITSY



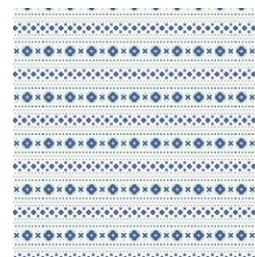
**FWR-34887**  
SEND ME FLOWERS



**FWR-34880**  
FLOURISHING PEONIES



**FWR-34889**  
Freshly Cut



**FWR-34891**  
GREENHOUSE BLOOMS



**FWR-34881**  
GARDENING JOY



FEEL THE DIFFERENCE © 2020 Courtesy of Art Gallery Quilts LLC. All Rights Reserved.

## ADDITIONAL BLENDERS FOR THIS PROJECT



**FE-535**  
FLAME



**PE-436**  
CREME DE LA CREME



**PE-438**  
CORAL REEF



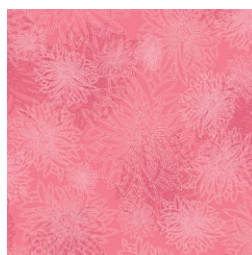
**FE-502**  
BLUSH



**PE-420**  
CRYSTAL PINK



**FE-504**  
SAND



**FE-528**  
BUBBLEGUM



**FE-518**  
BALLERINA



**PE-478**  
JADE CREAM



**FE-519**  
ICY BLUE



**FE-508**  
AQUA HAZE



**PE-417**  
EMERALD



**DEN-S-2001**  
INDIGO SHADOW



FINISHED SIZE | 80" x 80"

## FABRIC REQUIREMENTS

Fabric <b>A</b>	FWR-34884	FQ
Fabric <b>B</b>	FE-535	FQ
Fabric <b>C</b>	FWR-34883	FQ
Fabric <b>D</b>	FWR-34882	FQ
Fabric <b>E</b>	PE-436	FQ
Fabric <b>F</b>	PE-438	FQ
Fabric <b>G</b>	FE-502	FQ
Fabric <b>H</b>	FWR-34885	FQ
Fabric <b>I</b>	PE-420	FQ
Fabric <b>J</b>	FE-504	$\frac{3}{4}$ yd.
Fabric <b>K</b>	FE-528	FQ
Fabric <b>L</b>	FWR-34887	FQ
Fabric <b>M</b>	PE-474	FQ
Fabric <b>N</b>	FE-518	FQ
Fabric <b>O</b>	FWR-34880	FQ
Fabric <b>P</b>	PE-478	FQ
Fabric <b>Q</b>	FWR-34889	FQ
Fabric <b>R</b>	FWR-34891	FQ
Fabric <b>S</b>	FE-519	FQ
Fabric <b>T</b>	FE-508	FQ

XXXXXXXXXXXXXXXXXXXXXXXXXXXX

Fabric <b>U</b>	FWR-34881	FQ
Fabric <b>V</b>	PE-417	FQ
Fabric <b>W</b>	DEN-S-2001	5½ yds.

BACKING FABRIC  
FWR-34889 5 ½ yds (*Suggested*)

BINDING FABRIC  
Fabric **J**- FE-504 (*Included*)

## CUTTING DIRECTIONS

*¼" seam allowances are included.  
WOF means width of fabric.*

- One (1) 80½" x 80½" square from Fabric **W**

### TEMPLATE 1

- Four (4) fabric **A**
- Eight (8) fabric **C**
- Eight (8) fabric **D**
- Six (6) fabric **E**
- Four (4) fabric **H**
- Six (6) fabric **J**
- Five (5) fabrics **K**
- Six (6) fabric **L**
- Four (4) fabric **O**
- Eight (8) fabric **Q**
- Five (5) fabrics **R**
- Three (3) fabric **S**
- Six (6) fabric **V**

## TEMPLATE 2

- Four (4) fabric **B**
- Four (4) fabric **I**
- Four (4) fabric **P**

## TEMPLATE 3

- Six (6) fabric **F**
- Seven (7) fabric **G**
- Four (4) fabric **M**
- Six (6) fabric **N**
- Four (4) fabric **T**
- Five (5) fabric **U**

## CONSTRUCTION

*Sew all rights sides together with ¼" seam allowance.*

- Quilt as desired your quilt top from Fabric **W** and then follow the diagram on the next page for each fabric petal template placement.
- This quilt is based on applique technique so feel free to place your petals as similar as possible, or play around with the positions.
- Place safety pins or regular pins in order to hold each fabric petals.
- Top stitch each petal using regular stitch, leaving a small opening to insert a small amount of pillow stuffing.
- Finish top stitching.
- Continue the same instruction for all the fabric petals.





DIAGRAM 1

## QUILT ASSEMBLY

*Sew rights sides together.*

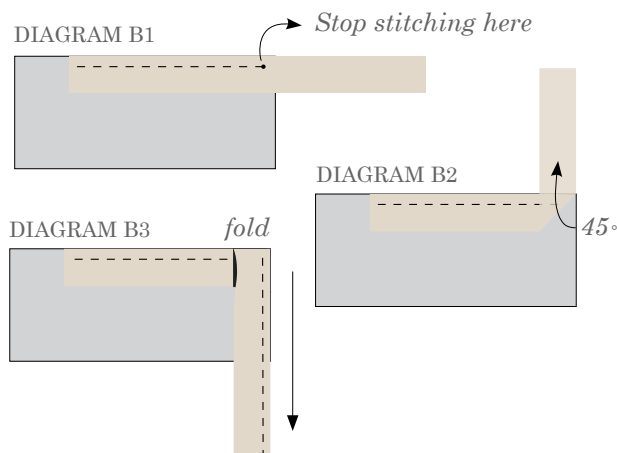
- Place BACKING FABRIC on a large surface wrong side up. Stretch it with masking tape against that surface.
- Place BATTING on top of backing fabric.
- Place TOP on top of the batting with right side facing up. Smooth away wrinkles using your hands.
- Pin all layers together and baste with basting thread, using long stitches. You can also use safety pins to join the layers.
- Machine or hand quilt starting at the center and working towards the corners. Remember that quilting motifs are a matter of personal preference. Have fun choosing yours!
- After you finished, trim excess of any fabric or batting, squaring the quilt to proceed to bind it.

- Stop stitching before you reach the last 5 or 6 inches. Cut the threads and remove the quilt from under the machine presser foot. Lay the loose ends of the binding flat along the quilt edge, folding the ends back on themselves where they meet. Press them together to form a crease. Using this crease as the stitching line, sew the two open ends of the binding with right sides together (you can help yourself marking with a pencil if the crease is difficult to see).
- Trim seam to  $\frac{1}{4}$ " and press open. Complete the sewing. Turn binding to back of the quilt, turn raw edge inside and stitch by hand using blind stitch.

## BINDING

*Sew rights sides together.*

- Cut enough strips  $1\frac{1}{2}$ " wide by the width of the fabric  to make a final strip 330" long. Start sewing the binding strip in the middle of one of the sides of the quilt, placing the strip right side down and leaving an approximated 5" tail. Sew with  $\frac{1}{4}$ " seam allowance (using straight stitch), aligning the strip's raw edge with the quilt top's raw edge.
- Stop stitching  $\frac{1}{4}$ " before the edge of the quilt (DIAGRAM B 1). Clip the threads. Remove the quilt from under the machine presser foot. Fold the strip in a motion of  $45^\circ$  and upward, pressing with your fingers (DIAGRAM B2). Hold this fold with your finger, bring the strip down in line with the next edge, making a horizontal fold that aligns with the top edge of the quilt (DIAGRAM B3). Start sewing at  $\frac{1}{4}$ " of the border, stitching all the layers. Do the same in the four corners of the quilt.



XXXXXXXXXXXXXXXXXXXXXXXXXXXXXXXXXXXX

*Congratulations  
& enjoy*

XXXXXXXXXXXXXXXXXXXXXXXXXXXXXXXXXXXX



[artgalleryfabrics.com](http://artgalleryfabrics.com)

NOTE: While all possible care has been taken to ensure the accuracy of this pattern, We are not responsible for printing errors or the way in which individual work varies.

Please read instructions carefully before starting the construction of this quilt. If desired, wash and iron your fabrics before starting to cut.

© 2020 Courtesy of Art Gallery Quilts LLC. All Rights Reserved.



Printer Test

