

Off Stripe

Featuring Artisan Collection by Kaffe Fassett

Show off the simplicity and boldness of the glorious Artisan Collection in this strip pieced quilt. Whether you're a beginning quilter, or an experienced one looking for a quick project, this fits the bill.

Collection:	Artisan Collection by Kaffe Fassett
Technique:	Strip Piecing
Skill Level:	Beginner
Finished Size:	80" x 94 1/8" (203.20cm x 239.07cm)

Off Stripe



Project designed by Liza Prior Lucy

Fabric Requirements

DESIGN	COLOR	ARTICLE CODE	YARDAGE
(A) Lightening	Navy	BKKF004.0NAVY	5/8 yard (57.15cm)
(B) Squiggle	Green	PWKF005.GREEN	1/2 yard (45.72cm)
(C) Mad Plaid	Cobalt	PWBM037.COBAL	5/8 yard (57.15cm)
(D) Embroidered Flower	Blue	PWKF001.BLUEX	1 1/8 yards (1.03m)
(E) Chess	Cobalt	BKKF006.0COBA	7/8 yard (80.01cm)
(F) Big Stripe	Blue	BKKF005.0BLUE	5/8 yard (57.15cm)
(G) Layered Stripe	Blue	PWKF003.BLUEX	2 yards (1.83m)*
(H) Tiddlywinks	Blue	PWK171.BLUEX	5/8 yard (57.15cm)
(I) Flags	Brown	BKKF003.0BROW	1/2 yard (45.72cm)
(J) Gerbera	Brown	PWKF006.BROWN	1/2 yard (45.72cm)
(K) Raked	Cobalt	PWKF004.COBAL	1/3 yard (30.48cm)

* includes binding

Backing (Purchased Separately)

44" (111.76cm) Wide

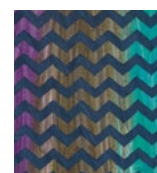
OR

108" (274.32cm) Wide

Circles Blue QBGP002.BLUEX

Additional Requirements

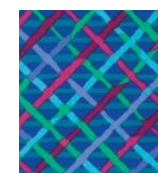
- The Kaffe Collective Aurifil thread 100% cotton 50wt
- 88" x 102" (223.52cm x 259.08cm)



(A)



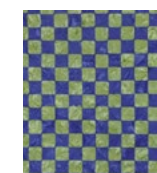
(B)



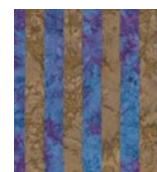
(C)



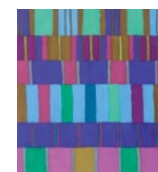
(D)



(E)



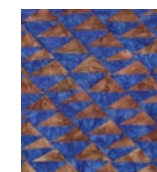
(F)



(G)



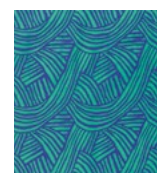
(H)



(I)



(J)



(K)



Backing
108"
(274.32cm)

Off Stripe



Cutting

WOF=width of fabric; LOF=length of fabric

Fabric A, cut:

(2) 5 $\frac{5}{8}$ " x WOF (14.29cm x WOF);
sub-cut (2) 5 $\frac{5}{8}$ " x 40 $\frac{1}{2}$ " (14.29cm x 102.87cm)
(2) 4" x WOF (10.2cm x WOF);
sub-cut (2) 4" x 40 $\frac{1}{2}$ " (10.16cm x 102.87cm)

Fabric B, cut:

(2) 3 $\frac{1}{8}$ " x WOF (7.94cm x WOF);
sub-cut (2) 3 $\frac{1}{8}$ " x 40 $\frac{1}{2}$ " (7.94cm x 102.87cm)
(2) 3 $\frac{1}{4}$ " x WOF (8.26cm x WOF);
sub-cut (2) 3 $\frac{1}{4}$ " x 40 $\frac{1}{2}$ " (8.26cm x 102.87cm)

Fabric C, cut:

(2) 3 $\frac{1}{2}$ " x WOF (8.89cm x WOF);
sub-cut (2) 3 $\frac{1}{2}$ " x 40 $\frac{1}{2}$ " (8.89cm x 102.87cm)
(2) 5 $\frac{1}{4}$ " x WOF (13.36cm x WOF);
sub-cut (2) 5 $\frac{1}{4}$ " x 40 $\frac{1}{2}$ " (13.36cm x 102.87cm)

Fabric D, cut:

(2) 12" x WOF (30.48cm x WOF);
sub-cut (2) 12" x 40 $\frac{1}{2}$ " (30.48cm x 102.87cm)
(2) 5 $\frac{3}{4}$ " x WOF (14.61cm x WOF);
sub-cut (2) 5 $\frac{3}{4}$ " x 40 $\frac{1}{2}$ " (14.61cm x 102.87cm)

Fabric E, cut:

(2) 5 $\frac{1}{2}$ " x WOF (13.97cm x WOF);
sub-cut (2) 5 $\frac{1}{2}$ " x 40 $\frac{1}{2}$ " (13.97cm x 102.87cm)
(2) 4" x WOF (10.16cm x WOF);
sub-cut (2) 4" x 40 $\frac{1}{2}$ " (10.16cm x 102.87cm)
(2) 3 $\frac{5}{8}$ " x WOF (9.21cm x WOF);
sub-cut (2) 3 $\frac{5}{8}$ " x 40 $\frac{1}{2}$ " (9.21cm x 102.87cm)

Fabric F, cut:

(2) 3 $\frac{5}{8}$ " x WOF (9.21cm x WOF);
sub-cut (2) 3 $\frac{5}{8}$ " x 40 $\frac{1}{2}$ " (9.21cm x 102.87cm)
(2) 5 $\frac{1}{2}$ " x WOF (13.97cm x WOF);
sub-cut (2) 5 $\frac{1}{2}$ " x 40 $\frac{1}{2}$ " (13.97cm x 102.87cm)

Fabric G, cut:

(2) 10" x WOF (25.40cm x WOF);
sub-cut (2) 10" x 40 $\frac{1}{2}$ " (25.40cm x 102.87cm)
(2) 5 $\frac{5}{8}$ " x WOF (14.29cm x WOF);
sub-cut (2) 5 $\frac{5}{8}$ " x 40 $\frac{1}{2}$ " (14.29cm x 102.87cm)
(11) 2 $\frac{1}{2}$ " x 36" LOF (6.35cm x WOF), for binding

Fabric H, cut:

(2) 4 $\frac{1}{2}$ " x WOF (11.43cm x WOF);
sub-cut (2) 4 $\frac{1}{2}$ " x 40 $\frac{1}{2}$ " (11.43cm x 102.87cm)
(2) 4" x WOF (10.20cm x WOF);
sub-cut (2) 4" x 40 $\frac{1}{2}$ " (10.20cm x 102.87cm)

Fabric I, cut:

(2) 6 $\frac{1}{4}$ " x WOF (15.88cm x WOF);
sub-cut (2) 6 $\frac{1}{4}$ " x 40 $\frac{1}{2}$ " (15.88cm x 102.87cm)

Fabric J, cut:

(2) 4 $\frac{1}{2}$ " x WOF (11.43cm x WOF), centering flowers along the strip;
sub-cut (2) 4 $\frac{1}{2}$ " x 40 $\frac{1}{2}$ " (11.43cm x 102.87cm)

Fabric K, cut:

(2) 4 $\frac{1}{2}$ " x WOF (11.43cm x WOF);
sub-cut (2) 4 $\frac{1}{2}$ " x 40 $\frac{1}{2}$ " (11.43cm x 102.87cm)

Sewing

Note: Use a $\frac{1}{4}$ " (.64cm) seam allowance. Sew all pieces with right sides together. Follow the **Quilt Layout** for strip placement and orientation.

Left Panel

1. Sew (1) 5 $\frac{5}{8}$ " x 40 $\frac{1}{2}$ " (14.29cm x 102.87cm) **Fabric A** strip and (1) 3 $\frac{1}{8}$ " x 40 $\frac{1}{2}$ " (7.94cm x 102.87cm) **Fabric B** strip together along one long edge (**Fig. 1**).

Fig. 1



2. Sew (1) 3 $\frac{1}{2}$ " x 40 $\frac{1}{2}$ " (8.89cm x 102.87cm) **Fabric C** strip to the **Fabric B** strip sewn in Step 1 (**Fig. 2**).

Fig. 2



Off Stripe



- Continue to add strips in the order shown in the **Quilt Layout** to complete the Left Panel. Press all seams in one direction.

Right Panel

- In the same manner, sew the strips together in the order shown in the **Quilt Layout** to complete the Right Panel. Press the seams in the opposite direction from the Left Panel.

Quilt Assembly

- Sew the Left and Right Panels together along one long edge to complete the quilt top. Press the seam to one side.

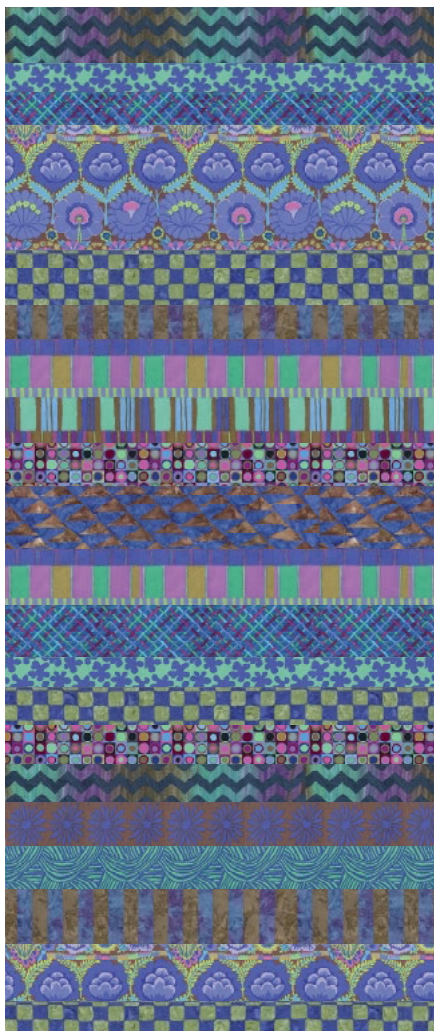
Finishing

- Layer the backing (wrong side up), batting, and quilt top (right side up). Baste and quilt as desired. Trim excess batting and backing even with the quilt top.
- Sew the (11) 2½" x LOF (6.35cm x WOF) **Fabric G** strips together end to end using straight seams. Press seams open. Press the strip in half with wrong sides together.
- Leaving an 8" (20.32cm) tail of binding, sew the binding to the top of the quilt through all layers with raw edges matching. Miter corners. Stop approximately 12" (30.48cm) from where you started. Lay both loose ends of binding flat along the quilt edge. Where the loose ends meet, fold them back on themselves and press to form a crease. Using this crease as your stitching line, sew the two open ends of the binding right sides together. Trim seam to ¼" (.64cm) and press open. Finish sewing binding to the quilt.
- Turn binding to back of quilt and hand-stitch in place.

Quilt Layout

Left Panel

Fabric	Strip
A	5 5/8" (14.3cm)
B	3 1/8" (7.9cm)
C	3 1/2" (8.9cm)
D	12" (30.5cm)
E	5 1/2" (14.0cm)
F	3 5/8" (9.2cm)
G	10" (25.4cm)
H	4 1/2" (11.4cm)
I	6 1/4" (15.9cm)
G	5 5/8" (14.3cm)
C	5 1/4" (13.3cm)
B	3 1/4" (8.3cm)
E	4" (10.2cm)
H	4" (10.2cm)
A	4" (10.2cm)
J	4 1/2" (11.4cm)
K	4 1/2" (11.4cm)
F	5 1/2" (14.0cm)
D	5 3/4" (14.6cm)
E	3 5/8" (9.2cm)



Right Panel

Fabric	Strip
H	4" (10.2cm)
E	4" (10.2cm)
A	4" (10.2cm)
B	3 1/4" (8.3cm)
I	6 1/4" (15.9cm)
G	5 5/8" (14.3cm)
C	5 1/4" (13.3cm)
F	5 1/2" (14.0cm)
D	5 3/4" (14.6cm)
E	3 5/8" (9.2cm)
J	4 1/2" (11.4cm)
K	4 1/2" (11.4cm)
C	3 1/2" (8.9cm)
B	3 1/8" (7.9cm)
D	12" (30.5cm)
E	5 1/2" (14.0cm)
F	3 5/8" (9.2cm)
G	10" (25.4cm)
A	5 5/8" (14.3cm)
H	4 1/2" (11.4cm)

