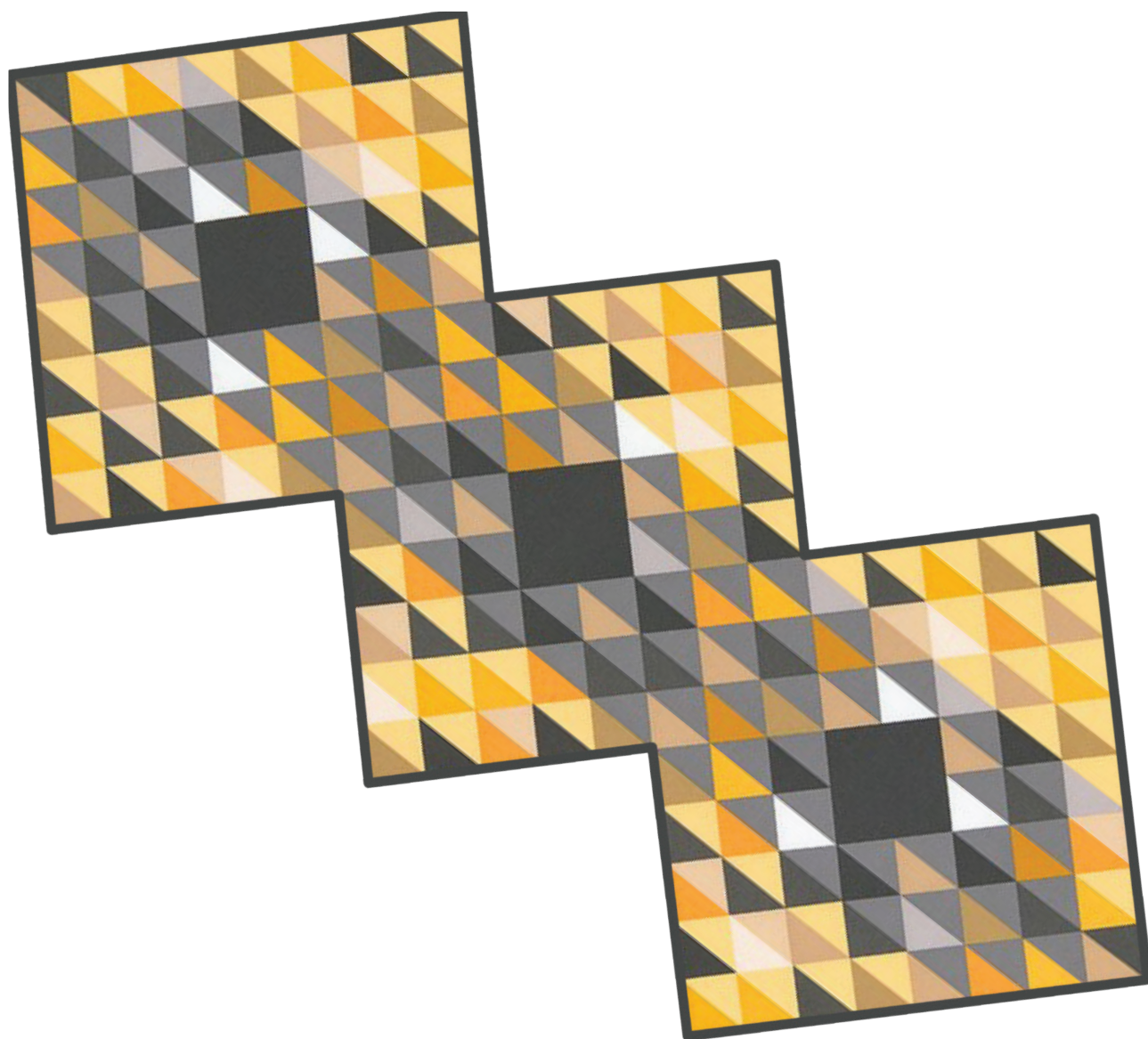


Honeycomb Tablerunner

www.ItsSewEmma.com • www.FatQuarterShop.com

check out our
YouTube tutorial



Finished size: 19" x 42 ½"

Features the Fragmental collection by Angela Walters for Robert Kaufman Fabrics.



Copyright 2015 Fat Quarter Shop, LLC. All rights reserved. Duplication of any kind is prohibited.

by It's Sew Emma

This pattern may be used for personal purposes only and may not be reproduced without the express written permission from It's Sew Emma. This pattern may not be used for commercial purposes.

Honeycomb Tablerunner

check out our
YouTube tutorial

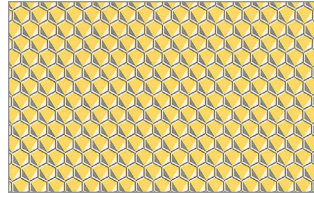
Fabrics Used:



15829-125
One Panel



K001-295
1 yard
Binding



15834-125
1 yard
Backing

Cutting Instructions:

Fabric	Quantity - Size
Binding	150" of 2" wide bias binding (refer to page 3 for cutting diagram)

Tablerunner Center:

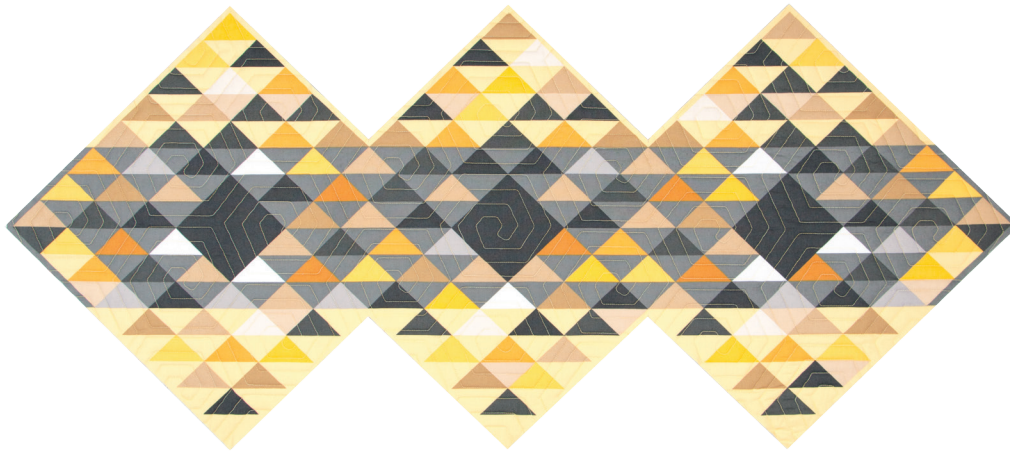
Layer the Panel (right side up), batting and backing (right side down). Quilt as desired.



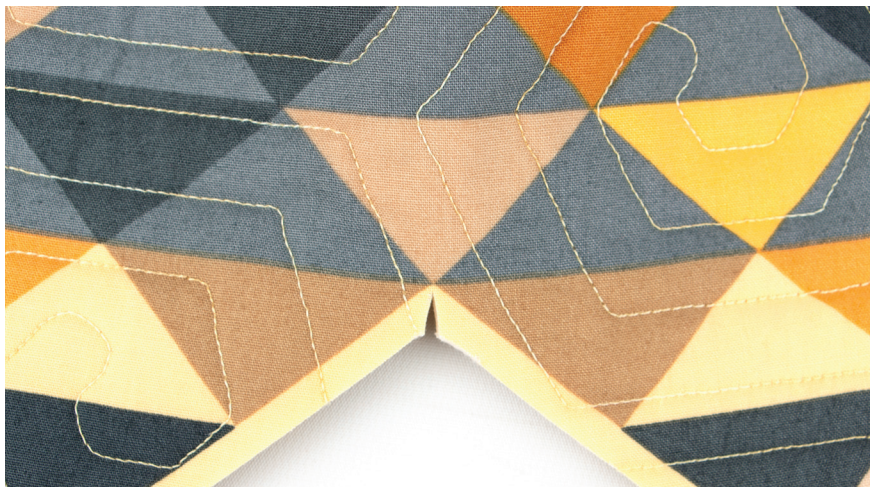
Honeycomb Tablerunner

check out our
YouTube tutorial

Trim $\frac{1}{4}$ " around the edge of the panel design.

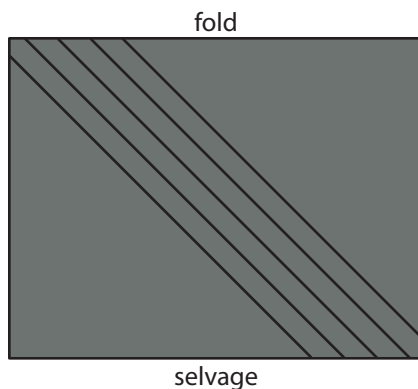


Clip inside corners $\frac{1}{4}$ ".



Finishing:

Cut 150" of 2" wide bias binding (approximately 4 strips across the bias).



Honeycomb Tablerunner

check out our
YouTube tutorial

Attach bias binding following our free YouTube tutorial – “How to Bias Bind a Quilt – Fat Quarter Shop”.
www.youtube.com/FatQuarterShop

