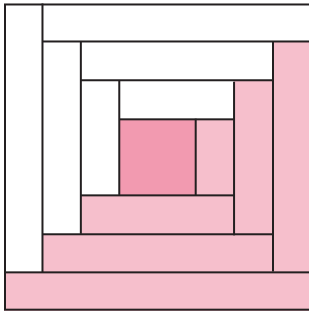


Hope Blooms Log Cabin Block

Check out our
YouTube tutorial





Unfinished size: 8 1/2" x 8 1/2".

"Classic and Vintage Series"

We have turned a traditional log cabin block into a perfectly pieced block with the Log Cabin Trim Tool Ruler.

Cutting Instructions:

<p>Seven Pinks*</p> 	<p>One Block</p> <p>1 - 2 1/2" square (A)</p> <p>1 - 2" x 9 1/2" rectangle (B)</p> <p>2 - 2" x 7 1/2" rectangles (C)</p> <p>2 - 2" x 5 1/2" rectangles (D)</p> <p>1 - 2" x 3 1/2" rectangle (E)</p>
<p>Six Whites*</p> 	<p>2 - 2" x 8 1/2" rectangles (F)</p> <p>2 - 2" x 6 1/2" rectangles (G)</p> <p>2 - 2" x 4 1/2" rectangles (H)</p>

8" Creative Grids Log Cabin Trim Tool Ruler

*Use each fabric one time.



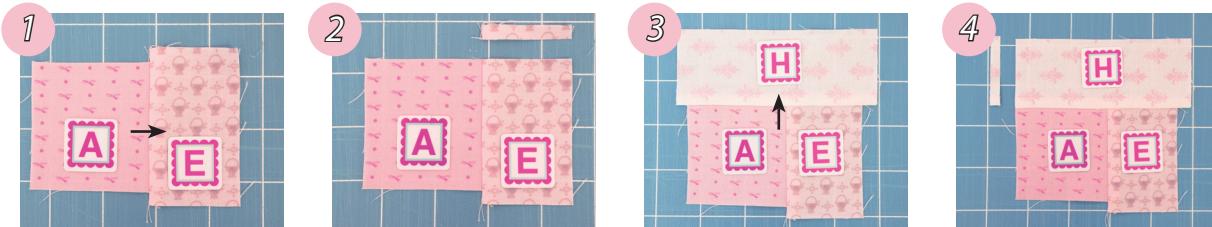
Pattern for Crib, Lap & Queen
size quilts available at
www.FatQuarterShop.com.

Sew using a 1/4" seam allowance and press as shown by arrows.

Block Assembly:

Assemble the Fabric A square, the Fabric E rectangle and one Fabric H rectangle.

Make one Log Cabin One Unit.



Make one.



1-866-826-2069

www.FatQuarterShop.com

www.YouTube.com/FatQuarterShop

Hope Blooms Log Cabin Block

Assemble the Log Cabin One Unit, the remaining Fabric H rectangle and one Fabric D rectangle.

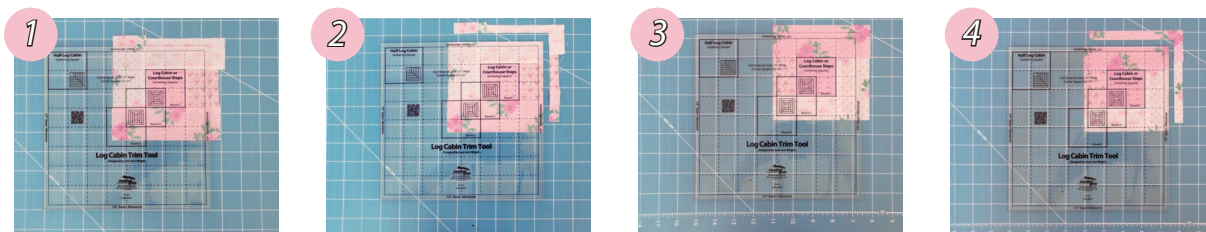
Make one Log Cabin Two Unit.



Make one.

Using the 8" Creative Grids Log Cabin Trim Tool, trim the Log Cabin Two Unit to 4 1/2" x 4 1/2".

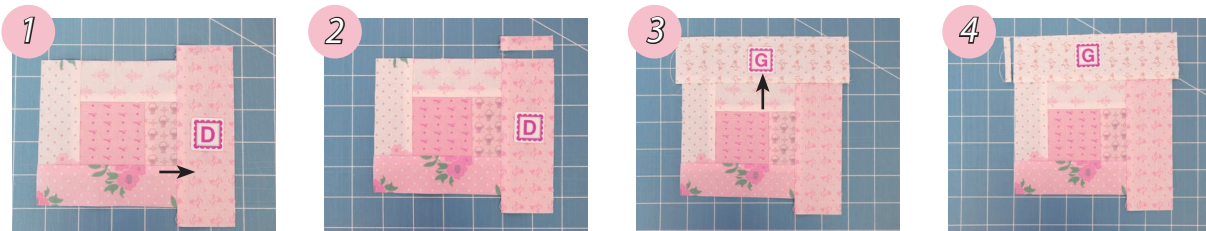
See video
for tips



Make one.

Assemble the Trimmed Log Cabin Two Unit, the remaining Fabric D rectangle and one Fabric G rectangle.

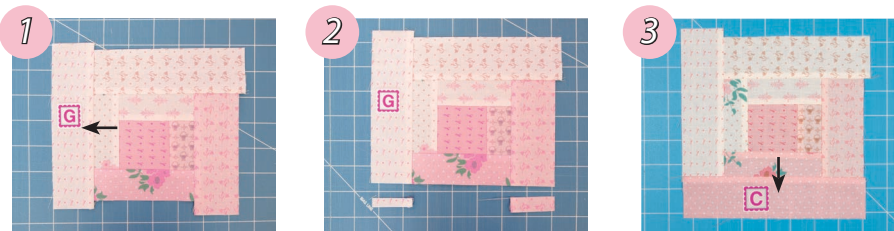
Make one Log Cabin Three Unit.



Make one.

Assemble the Log Cabin Three Unit, the remaining Fabric G rectangle and one Fabric C rectangle.

Make one Log Cabin Four Unit.

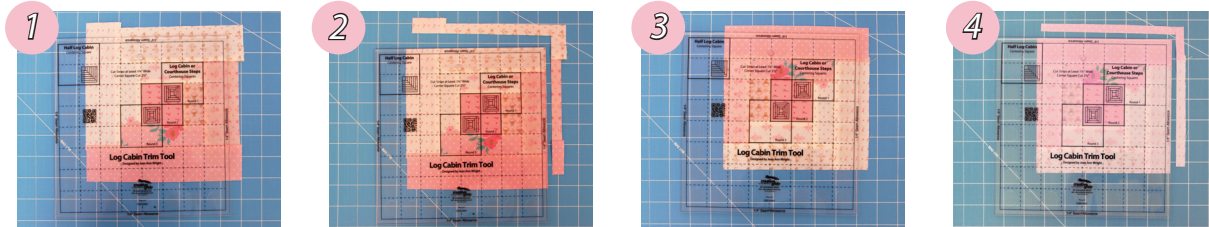


Make one.

Hope Blooms Log Cabin Block

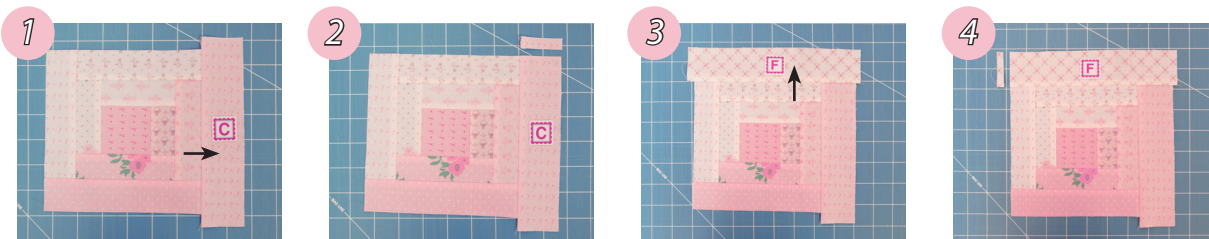
Using the 8" Creative Grids Log Cabin Trim Tool, trim the Log Cabin Four Unit to 6 ½" x 6 ½".

See video
for tips



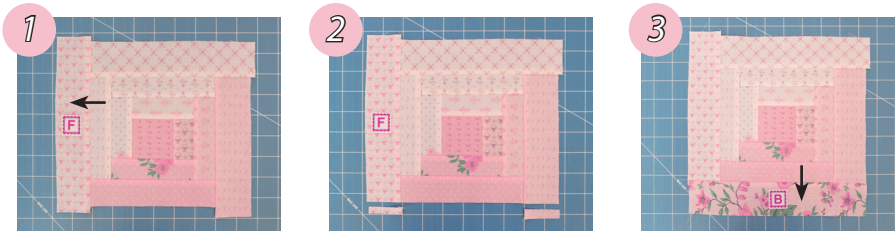
Make one.

Assemble the Trimmed Log Cabin Four Unit, the remaining Fabric C rectangle and one Fabric F rectangle.
Make one Log Cabin Five Unit.



Make one.

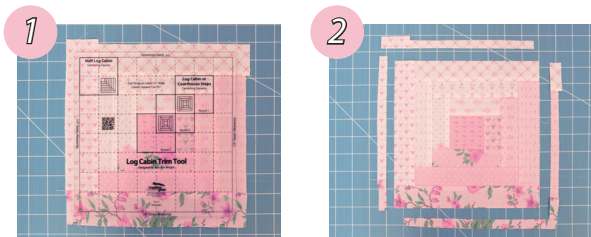
Assemble the Log Cabin Five Unit, the remaining Fabric F rectangle and the Fabric B rectangle.



Make one.

Using the 8" Creative Grids Log Cabin Trim Tool, trim the Log Cabin Block to 8 ½" x 8 ½".

See video
for tips



Make one.