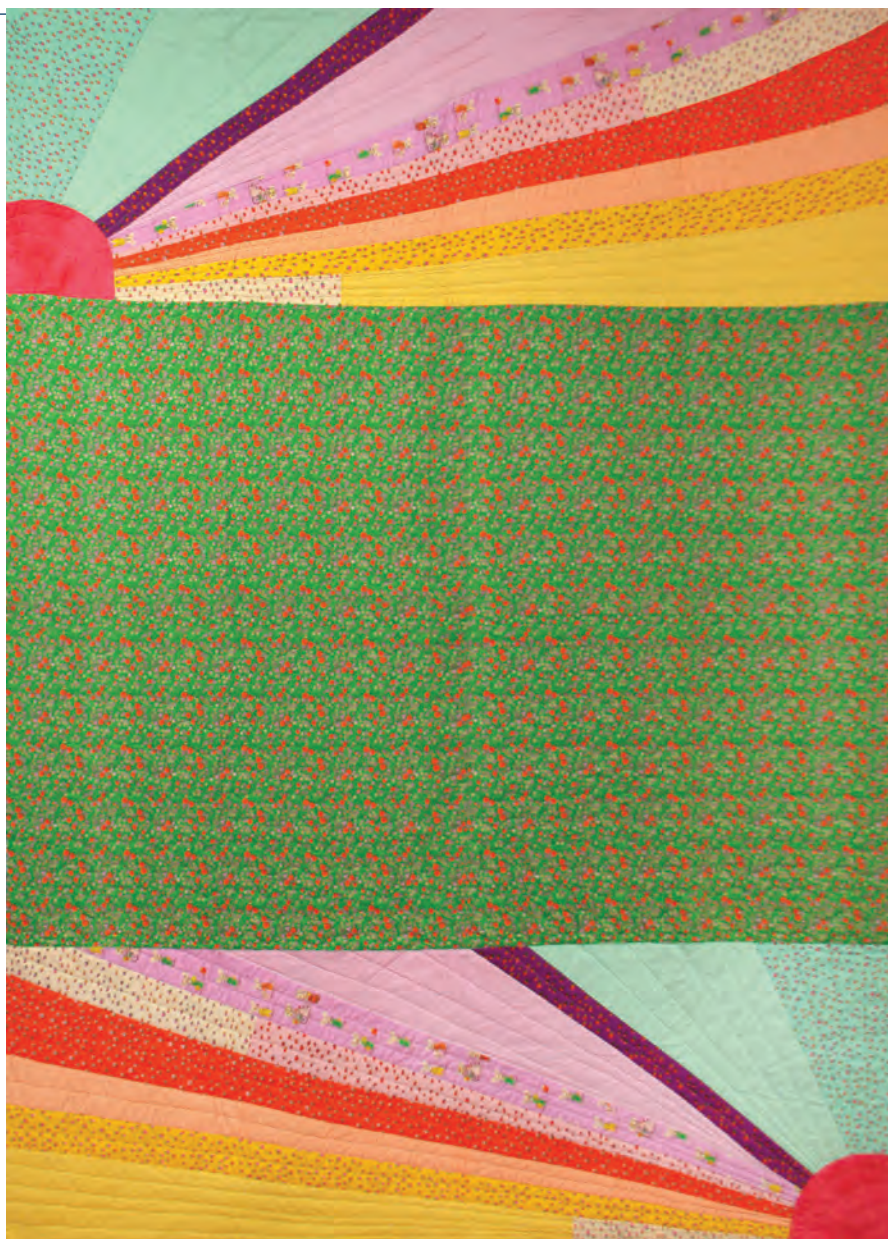


Sunbeam

designed by Josie Kate Snyder

featuring the *Trixie* collection by Heather Ross

QUILT SIZE: 57-1/2" x 80"



THIS IS A DIGITAL REPRESENTATION OF THE QUILT TOP, FABRIC MAY VARY.

FREE
PROJECT

PLEASE NOTE: BEFORE MAKING YOUR PROJECT, CHECK FOR ANY PATTERN UPDATES AT [WINDHAMFABRICS.COM](http://windhamfabrics.com)'S FREE PROJECTS SECTION.



Sunbeam

KEY	FABRIC	SKU	YD	CUTTING INSTRUCTIONS
A		50899-8 aqua	3/8	• (1) 10-1/2" x width of fabric (WOF) strip. Sub-cut the strip into (2) 10-1/2" x 17-1/2" strips.
B		50900-8 aqua	7/8	• (2) 11" x 24-1/2" WOF strips.
C		50899-11 plum	1/4	• (2) 3" x 29" WOF strips.
D		50900-9 pink	1-1/2	• (2) 9" x 45" length of fabric (LOF) strips.
E		50897-5 light purple	1-2/3	• (2) 4-1/2" x 53" LOF strips.
F		50899-9 pink	1/4	• (2) 3" x 36-1/2" WOF strips.
G		50899-2 blush	1/2	• (1) 13" x 15-1/2" WOF strip. • (2) 3" x 18-1/2" WOF strips from the remaining fabric.
H		50899-10 orange	1-2/3	• (2) 5-1/2" x 54" LOF strips.
I		50900-13 tangerine	1-2/3	• (2) 4-1/2" x 54" LOF strips.
J		50899-12 gold	1-2/3	• (2) 3-1/2" x 54" LOF strips.
K		50900-12 gold	1/2	• (1) 13" x 37" WOF strip.
L		37098-?54 radish	1/3	• See instructions to cut (1) Sun.
M		50898-6 kelly	1-3/4	• (1) 41-1/2" x 57-1/2" LOF strip.
N		50900-5 light purple	2/3	Binding • (7) 2-1/2" x WOF strips for the binding.
		Backing 50896-1 green	5	• (2) 88" x WOF strips. Sew the strips together and trim to 66 x 88" for the pieced back.
				Batting 66" x 88"



Sunbeam

Note: Each quilt will be unique, depending on how the rays are cut at each step. There are no templates and no suggested angle measurements other than in Figure 1 which can be used as an example.

Block Assembly

1. Sew (1) **G** 13" x 15-1/2" strip to the top of (1) **K** 13" x 37" strip. At the top of the strip, measure in 5-1/4" from each side and mark. Draw a line from the mark to the bottom corner of the **K** strip on each side. Cut on the line to make the beginning block (**Fig. 1**).

2. Sew (1) **J** strip to each side of the block from **Step 1**. Draw a line on a diagonal from the top to the bottom on each side and cut on the line (**Fig. 2**).

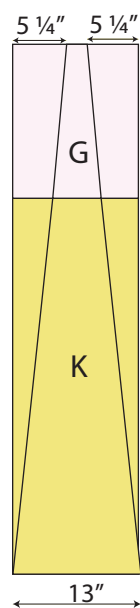


Fig. 1

Draw a diagonal line to create a ray on either side and cut

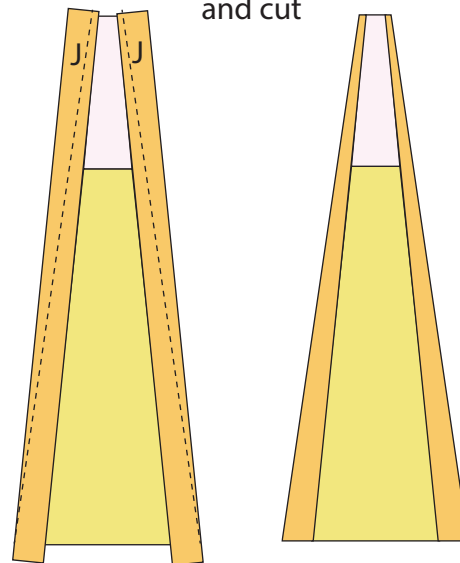


Fig. 2

3. Repeat **Step 2** and refer to **Figures 3-4** for fabric identification, placement and approximate angles.

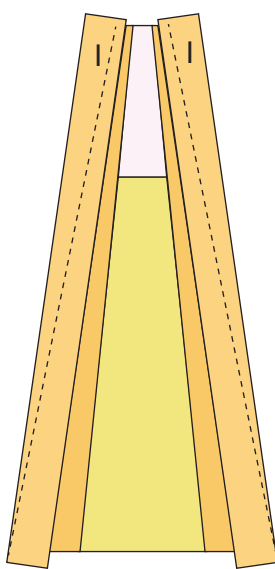


Fig. 3

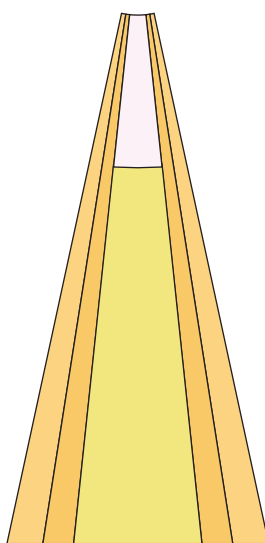


Fig. 4



Sunbeam

4. Sew (1) **F** 3" x 36-1/2" strip to the top of (1) **G** 3" x 18-1/2" strip (**Fig. 5**). Repeat to make a second strip.
5. Sew the strips from **Step 4** to the block as in Step 2 (**Fig. 6**).
6. Trim the bottom sides of the block to make 90-degree corners on each side (**Fig. 7**).

make 2

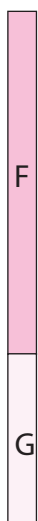


Fig. 5

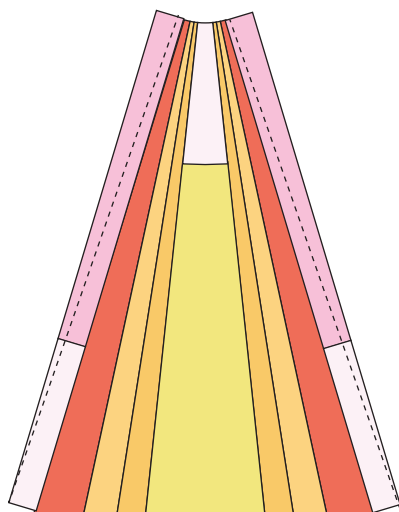
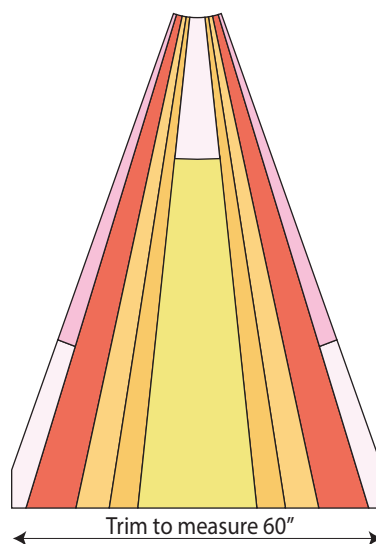


Fig. 6



Trim the strips
to make 90
degree corners
on both sides

Trim to measure 60"

Fig. 7

7. Repeat **Step 2** and refer to **Figures 8-13** for fabric identification, placement and approximate angles.

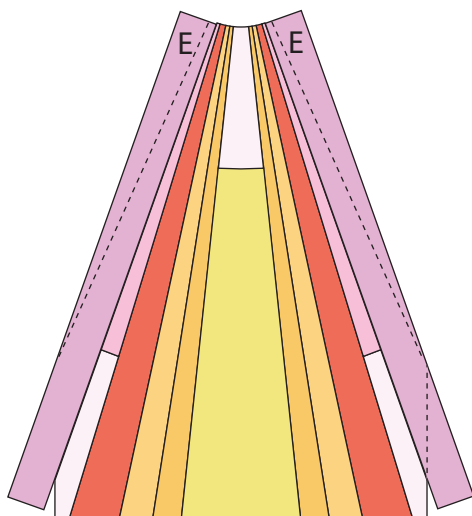


Fig. 8

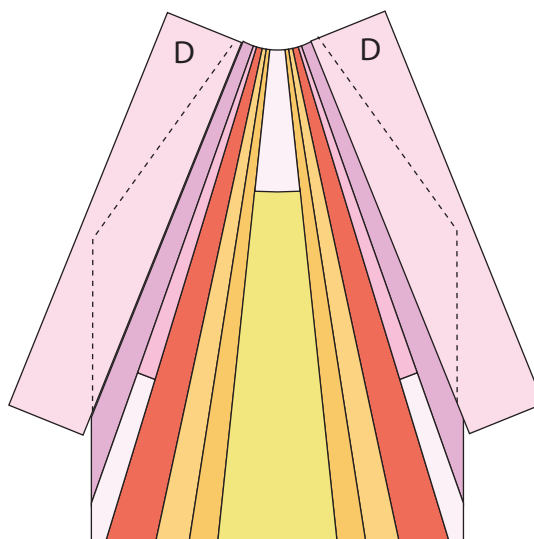


Fig. 9



Sunbeam

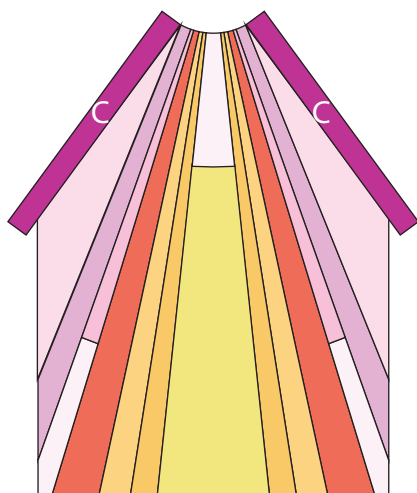


Fig. 10

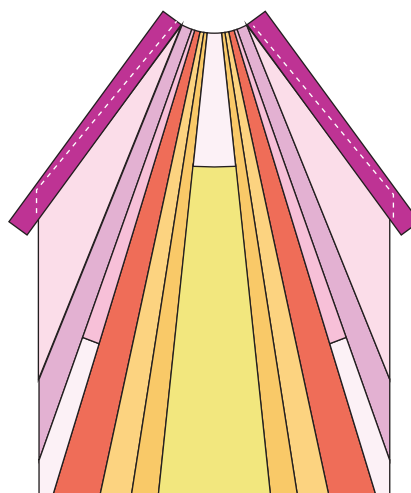


Fig. 11

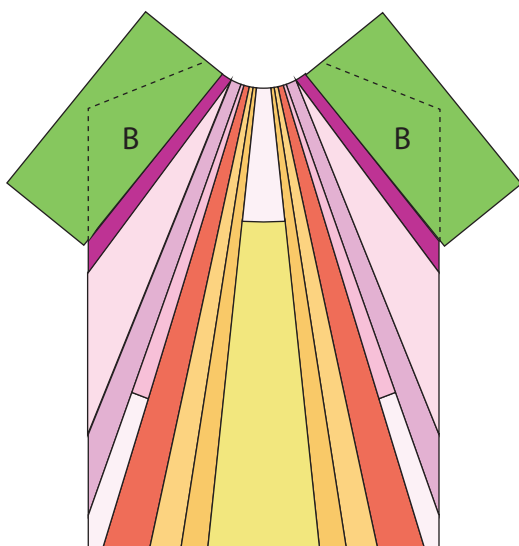


Fig. 12

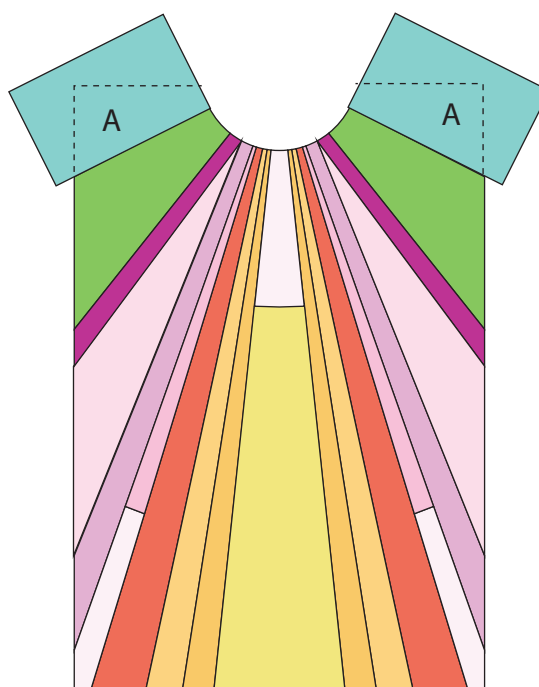


Fig. 13

8. Following the manufacturer's instructions, trace the sun template onto the paper side of the fusible web. Roughly cut out the sun template about 1/8" outside the drawn lines.

9. Press the sun template onto the wrong side of the **L** strip. Cut out the sun template on the drawn lines.



Sunbeam

10. Refer to **Figure 14** to arrange and press the **L** sun onto the block.
11. Finish the raw edges of each shape with a decorative stitch such as a buttonhole or satin stitch and trim the block to measure 39-1/2" x 58".
12. Cut the panel in half from the top to the bottom as shown in **Figure 15**.

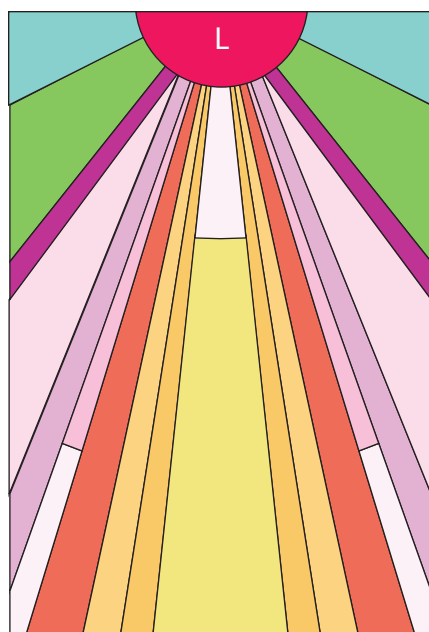


Fig. 14

Trim to measure
39 1/2" x 58"
after appliqueing
on the sun.

Cut the panel in half
to make the top and bottom blocks.

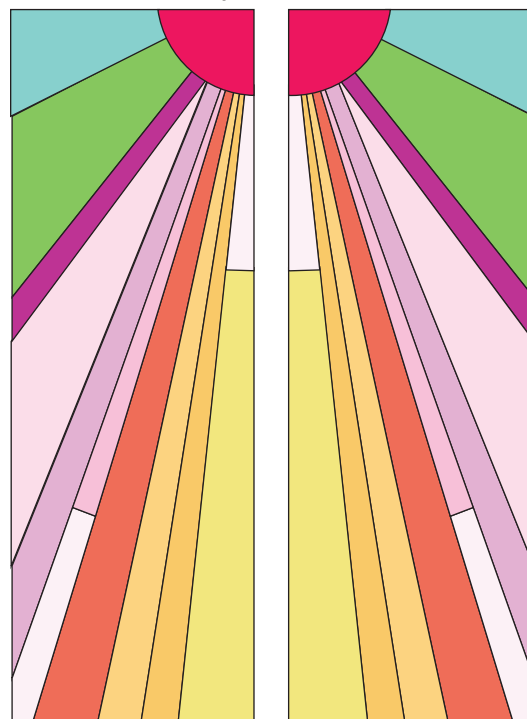


Fig. 15

Quilt Top Assembly

(Refer to the Quilt Diagram while assembling the quilt top.)

13. Sew (1) half of the panel to the top of the **M** 41-1/2" x 57-1/2" strip and (1) half to the bottom of the **M** strip. Pay attention to the orientation of the panel halves. Trim the top to measure 58" x 80-1/2" to make the quilt top.

Finishing

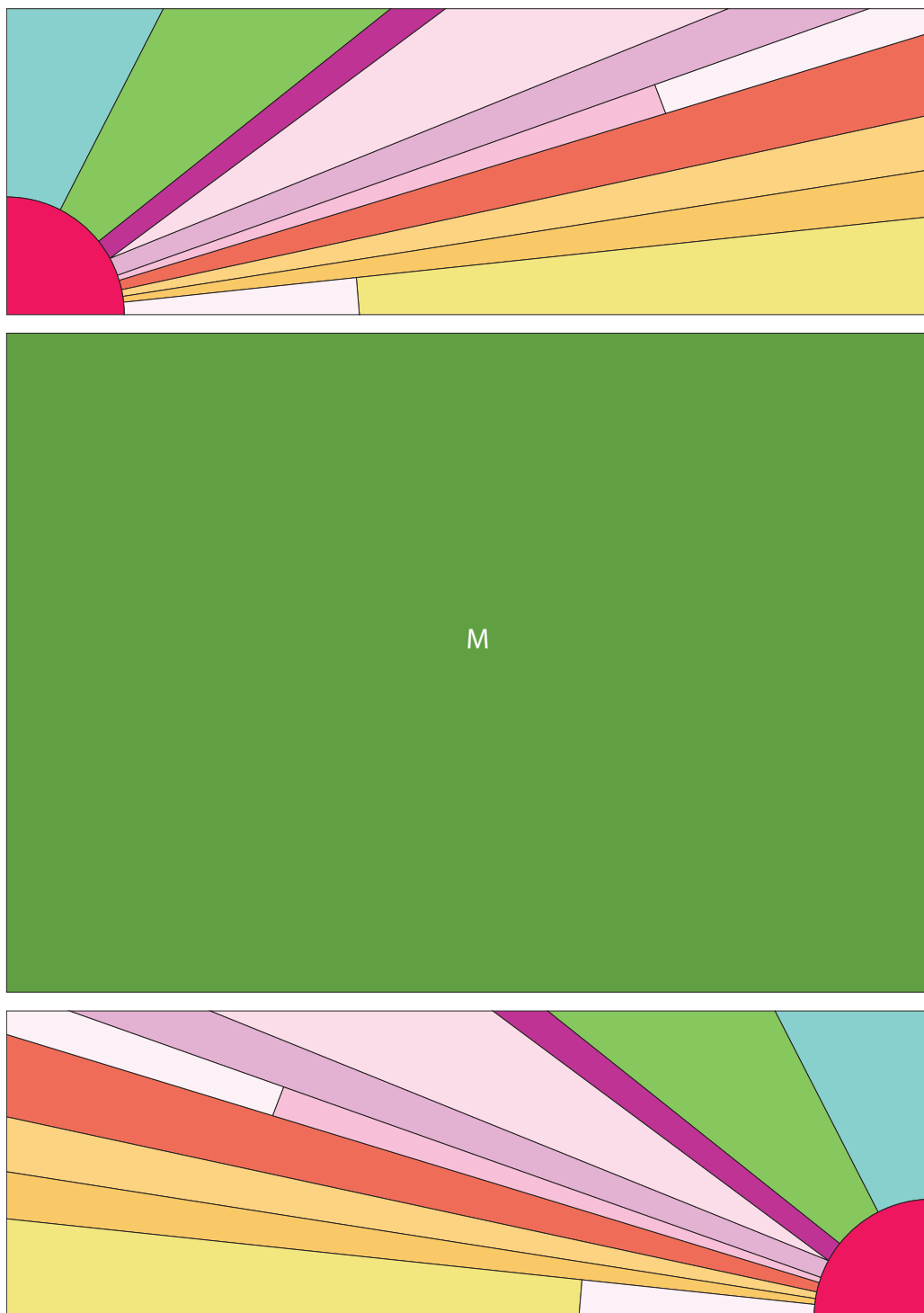
14. Layer and quilt as desired.
15. Sew the (7) **N** 2-1/2" x WOF strips together end-to-end with 45-degree seams to make the binding. Fold this long strip in half lengthwise with wrong sides together and press.
16. Bind as desired.



Sunbeam

SIZE: 57-1/2" X 80"

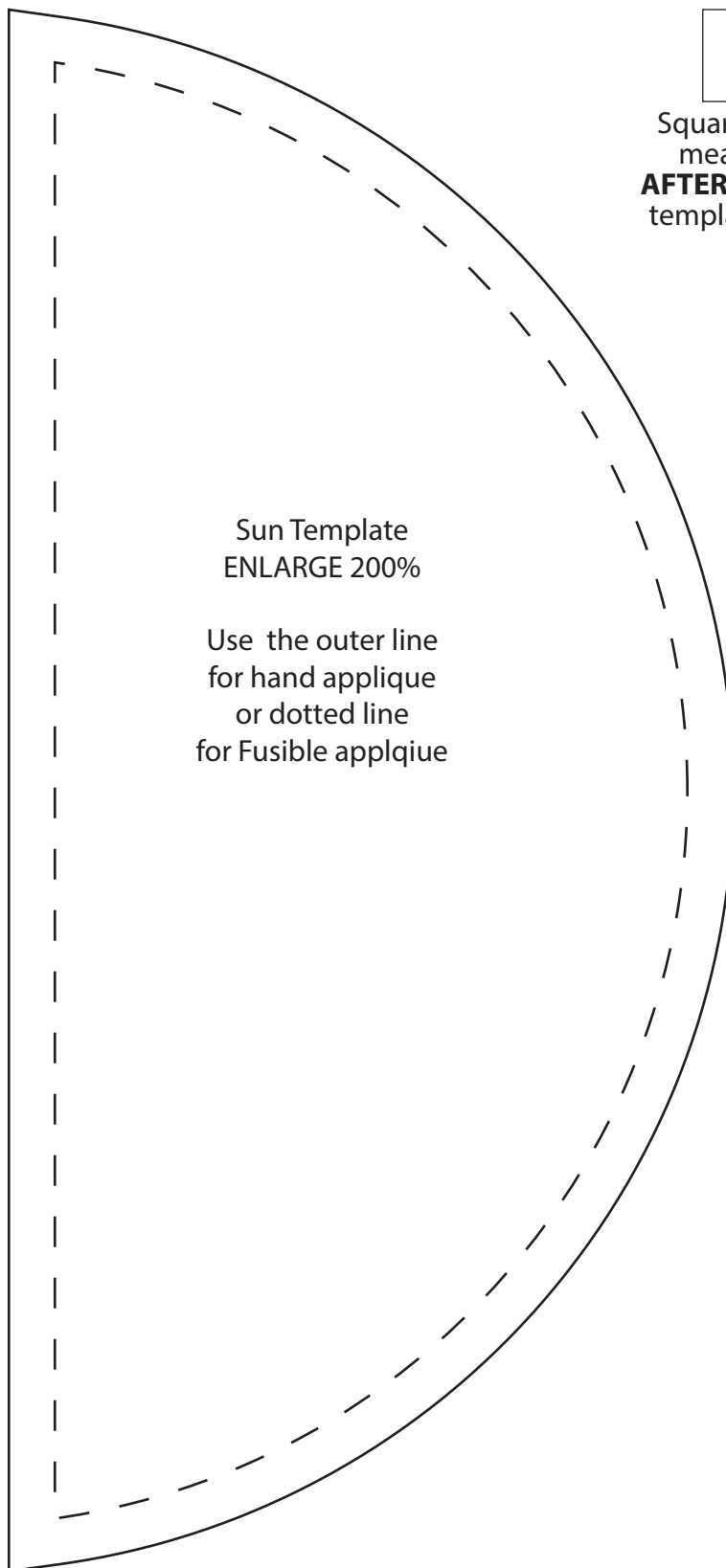
Quilt Diagram





Sunbeam

Templates



Square should
measure 1"
AFTER enlarging
template 200%.

Sun Template
ENLARGE 200%

Use the outer line
for hand applique
or dotted line
for Fusible applique