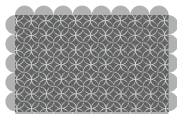


Make one.
5" x 56" unfinished

Fabrics:



Fabrics A, B & C
48626-94



Fabric D
29116-13



Fabric D
29110-18



Fabric D
29116-14



Fabric D
29112-17




Fabric D
29115-22

Choose the Flying Geese Method that works best for you. The cutting on the left uses the Traditional Method and the cutting on the right uses the Foundation Paper Method.

Cutting:

Traditional Method:

Foundation Paper Method:

Background	7 - 2" x 8" rectangles	7 - 2" x 8" rectangles	A
	2 - 2" x 5" rectangles	2 - 2" x 5" rectangles	B
	70 - 2" squares	40 - 3" squares (Placements 2 & 3)	C
Block Prints	<i>From each print cut:</i>	<i>From each print cut:</i>	
	7 - 2" x 3 1/2" rectangles (35 total)	4 - 4 1/4" x 5" rectangles (20 total) (Placement 1)	D
		1 1/2" x 3" Flying Geese Foundation Paper: 20 sheets	

Donate to *Make a Wish!*

#SerendipityQAL

<http://site.wish.org/goto/serendipity>



Use ¼" seams and press as arrows indicate throughout.

Block Assembly:

Flying Geese Traditional Method:

Draw a diagonal line on the wrong side of the Fabric C squares.

With right sides facing, layer a Fabric C square on the top end of a Fabric D rectangle.

Stitch on the drawn line and trim ¼" away from the seam.



Repeat on the bottom end.

Flying Geese Unit should measure 2" x 3 ½".



Make seven.



Make seven.



Make seven.



Make seven.

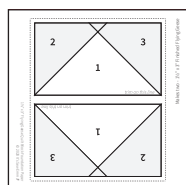
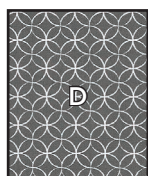


Make seven.



Flying Geese Foundation Paper Method:

Following the instructions on the Flying Geese Foundation Paper, layer a Fabric D rectangle in the Placement 1 position on the Flying Geese paper.



Cut the Fabric C squares on the diagonal once.



Make eighty.

Following the instructions on the Flying Geese Foundation Paper, layer the Fabric C triangles in the Placements 2 and 3 positions on the Flying Geese paper.

Flying Geese Unit should measure 2" x 3 ½".

You will not use one Flying Geese Unit from each print.



Make eight.



Make eight.



Make eight.



Make eight.



Make eight.

Assemble Unit using one Flying Geese Unit from each Block Print.

Happy Chance Unit should measure 3 1/2" x 8".



Assemble Block.

Top Happy Chance Block should measure 5" x 8".



Assemble Block.

Bottom Happy Chance Block should measure 5" x 8".



Assemble Row.

Happy Chance Row should measure 5" x 56".

