

# BLISSFUL Blooms



FREE PATTERN

XXXXXXXXXXXXXXXXXXXXXXXXXXXX

ANGLES

A DIVISION OF AGF



# BLISSFUL Blooms

QUILT DESIGNED BY AGFstudio



# POLLINATE

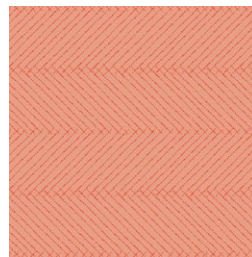
FABRICS DESIGNED BY JESSICA SWIFT



PLN-94500  
ABUNDANT MEADOW



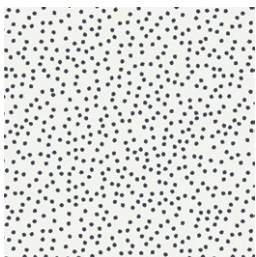
PLN-94502  
WINDSONG



PLN-94503  
PLANTED PERFECTION



PLN-94511  
GARDEN GEOMETRY



PLN-94505  
WINDSCATTER



PLN-94509  
FEATHERSWEPT



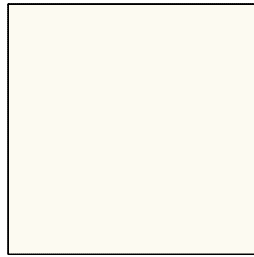
PLN-94508  
NECTARLOVE



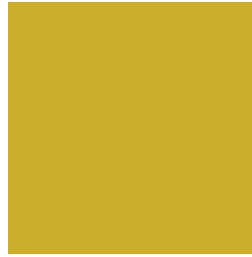
PLN-94507  
HONEYLEAF



PE-451  
ICY MINT



PE-408  
WHITE LINEN



PE-407  
EMPIRE YELLOW



FINISHED SIZE | 72" x 72"

## FABRIC REQUIREMENTS

Fabric <b>A</b>	PLN-94500	1 yd.
Fabric <b>B</b>	PE-451	1 ½ yd.
Fabric <b>C</b>	PLN-94502	⅞ yd.
Fabric <b>D</b>	PLN-94503	1¼ yds.
Fabric <b>E</b>	PLN-94511	⅝ yd.
Fabric <b>F</b>	PLN-94505	1¼ yds.
Fabric <b>G</b>	PLN-94509	½ yd.
Fabric <b>H</b>	PE-408	⅞ yd.
Fabric <b>I</b>	PLN-94508	⅜ yd.
Fabric <b>J</b>	PLN-94507	½ yd.
Fabric <b>K</b>	PE-407	¼ yd.

**BACKING FABRIC**  
PLN-94508 4 ½ yds (*Suggested*)

**BINDING FABRIC**  
Fabric **F** PLN-94505 (*Included*)

## CUTTING DIRECTIONS

¼" seam allowances are included.  
WOF means width of fabric.

- Forty four (44) petal templates from fabric **A**.
- Forty four (44) 6½" squares from fabric **B**.
- Forty (40) petal templates from fabric **C**.
- Thirty six (36) 6½" squares from fabric **D**.
- Twenty eight (28) petal templates from fabric **E**.

- Twenty eight (28) 6½" squares from fabric **F**.
- Twenty (20) petal templates from fabric **G**.
- Twenty (20) 6½" squares from fabric **H**.
- Twelve (12) petal templates from fabric **I**.
- Twelve (12) 6½" squares from fabric **J**.
- Four (4) 6½" squares from fabric **K**.

## CONSTRUCTION

*Sew all rights sides together with ¼" seam allowance.*

- Take forty four (44) 6½" squares from fabric **B** and forty four (44) petal templates from fabric **A**.
- Using a zig zag stitch of any preferred top stitch method, place one petal on top of one 6½" square from fabric **B**, wrong side facing down and right side of the square facing up.
- Join forty four **AB** units.

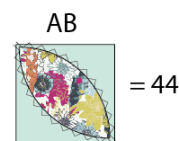


DIAGRAM 1

- Repeat the same assembling process by taking thirty six (36) 6½" squares from fabric **D**, forty (40) petal templates from fabric **C**, twenty eight (28) petal templates from fabric **E**, twenty eight (28) 6½" squares from fabric **F**, twenty (20) petal templates from fabric **G**, twenty (20) 6½" squares from fabric **H**, twelve (12) petal templates from fabric **I**, twelve (12) 6½" squares from fabric **J**, and four (4) 6½" squares from fabric **K**.

- Follow the diagram below for each unit assembly.

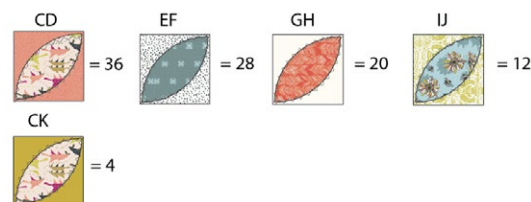


DIAGRAM 2



- To assemble each row, follow the diagram below.
- Then, sew rows 1-12.

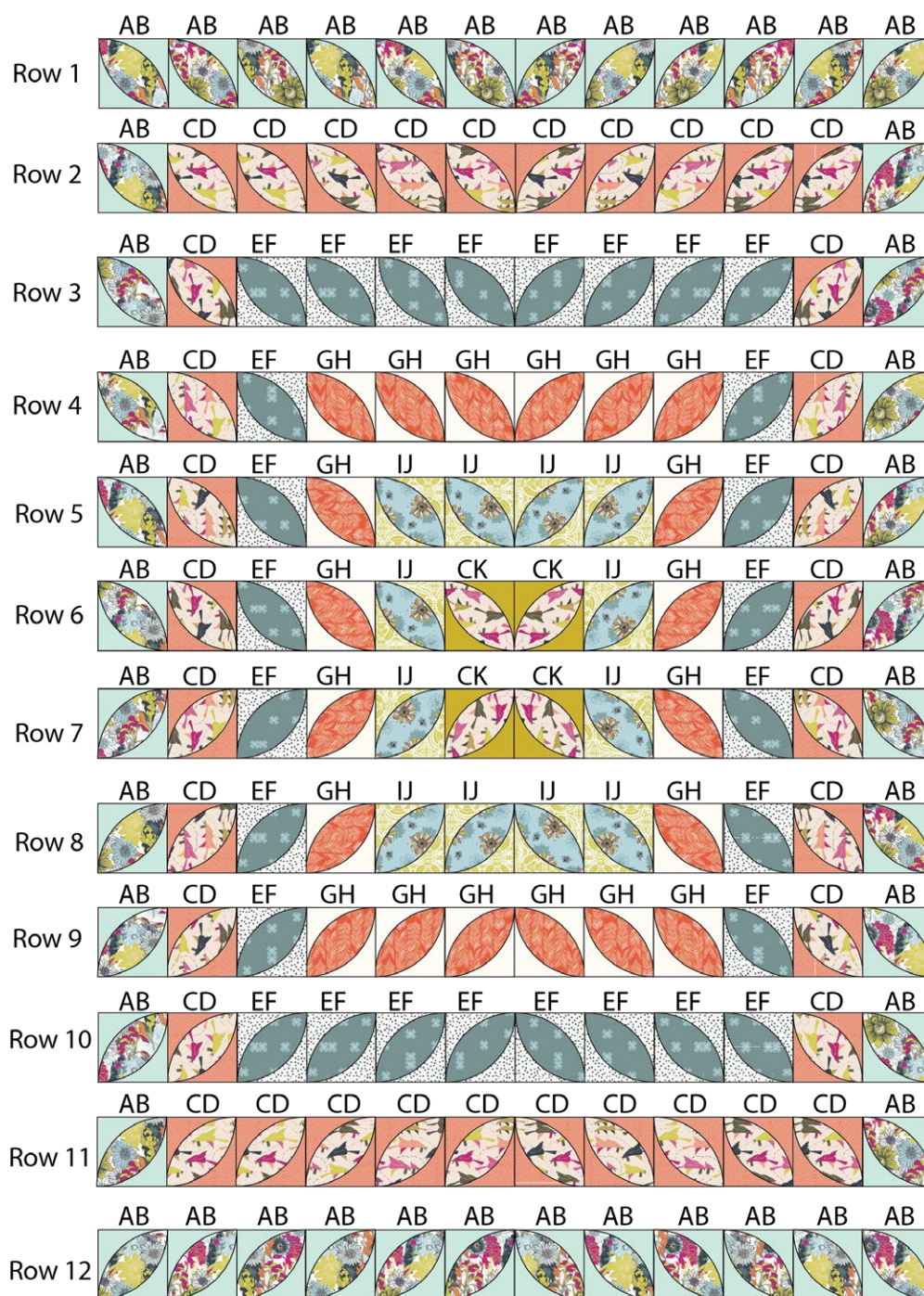


DIAGRAM 3

## QUILT ASSEMBLY

*Sew rights sides together.*

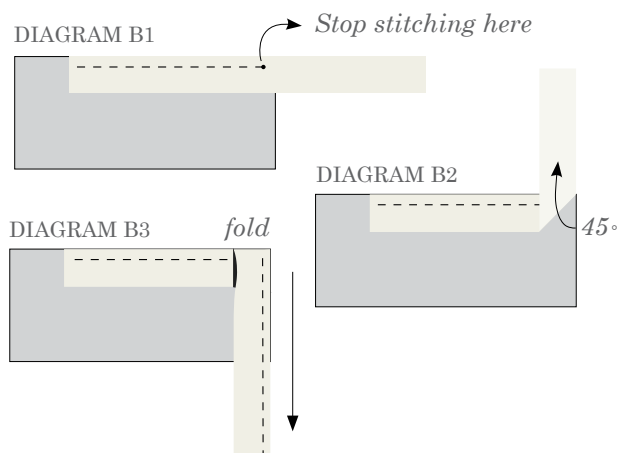
- Place BACKING FABRIC on a large surface wrong side up. Stretch it with masking tape against that surface.
- Place BATTING on top of backing fabric.
- Place TOP on top of the batting with right side facing up. Smooth away wrinkles using your hands.
- Pin all layers together and baste with basting thread, using long stitches. You can also use safety pins to join the layers.
- Machine or hand quilt starting at the center and working towards the corners. Remember that quilting motifs are a matter of personal preference. Have fun choosing yours!
- After you finished, trim excess of any fabric or batting, squaring the quilt to proceed to bind it.

- Stop stitching before you reach the last 5 or 6 inches. Cut the threads and remove the quilt from under the machine presser foot. Lay the loose ends of the binding flat along the quilt edge, folding the ends back on themselves where they meet. Press them together to form a crease. Using this crease as the stitching line, sew the two open ends of the binding with right sides together (you can help yourself marking with a pencil if the crease is difficult to see).
- Trim seam to  $\frac{1}{4}$ " and press open. Complete the sewing. Turn binding to back of the quilt, turn raw edge inside and stitch by hand using blind stitch.

## BINDING

*Sew rights sides together.*

- Cut enough strips  $1\frac{1}{2}$ " wide by the width of the fabric **F** to make a final strip 298" long. Start sewing the binding strip in the middle of one of the sides of the quilt, placing the strip right side down and leaving an approximated 5" tail. Sew with  $\frac{1}{4}$ " seam allowance (using straight stitch), aligning the strip's raw edge with the quilt top's raw edge.
- Stop stitching  $\frac{1}{4}$ " before the edge of the quilt (DIAGRAM B 1). Clip the threads. Remove the quilt from under the machine presser foot. Fold the strip in a motion of  $45^\circ$  and upward, pressing with your fingers (DIAGRAM B2). Hold this fold with your finger, bring the strip down in line with the next edge, making a horizontal fold that aligns with the top edge of the quilt (DIAGRAM B3). Start sewing at  $\frac{1}{4}$ " of the border, stitching all the layers. Do the same in the four corners of the quilt.



XXXXXXXXXXXXXXXXXXXXXXXXXXXXXXXXXXXX

*Congratulations  
& enjoy*

XXXXXXXXXXXXXXXXXXXXXXXXXXXXXXXXXXXX



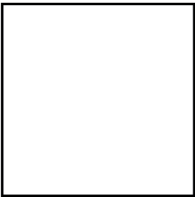
[artgalleryfabrics.com](http://artgalleryfabrics.com)

NOTE: While all possible care has been taken to ensure the accuracy of this pattern, We are not responsible for printing errors or the way in which individual work varies.

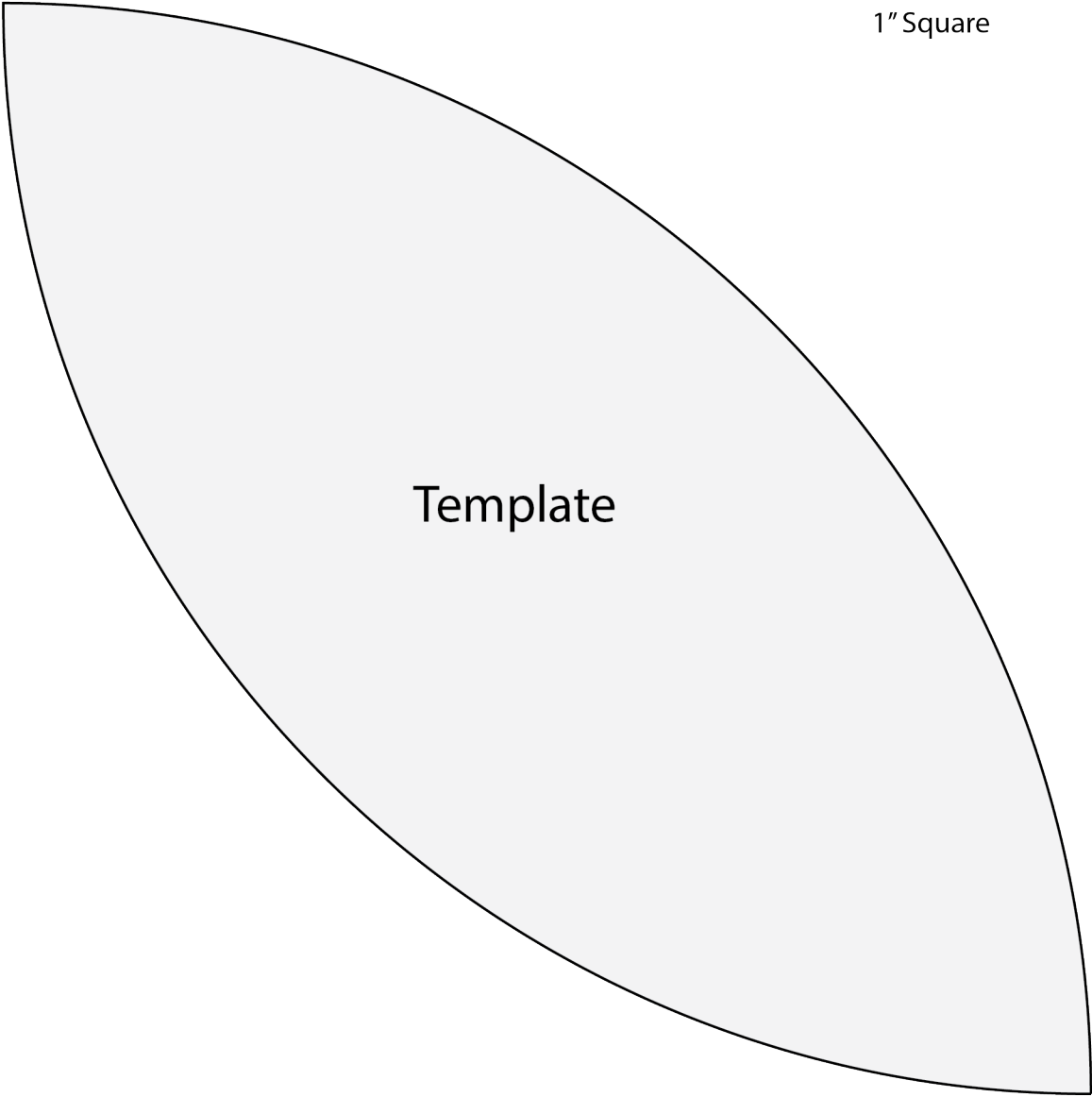
Please read instructions carefully before starting the construction of this quilt. If desired, wash and iron your fabrics before starting to cut.

© 2020 Courtesy of Art Gallery Quilts LLC. All Rights Reserved.

Printer Test



1" Square



Template