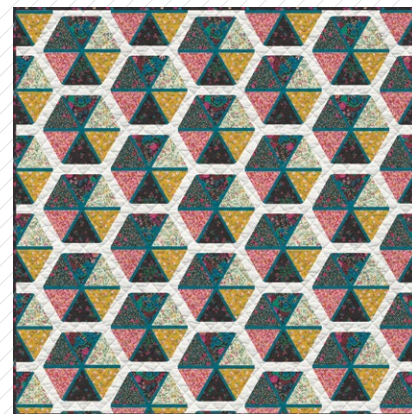


Hexie Soiree

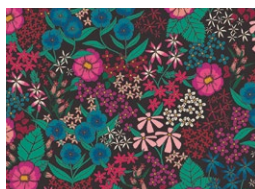


Hexie Soiree

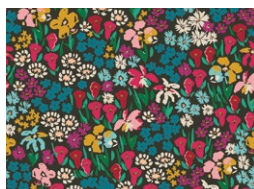
QUILT DESIGNED BY AGFstudio



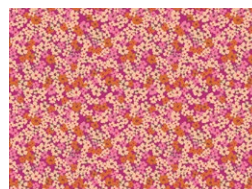
FABRICS DESIGNED BY AGFstudio



TFS-99100
PERENNIAL SOIREE



TFS-99102
BLOOMKIND MEADOW



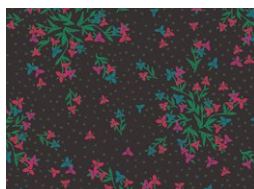
TFS-99106
RETRO PRAIRIE BLUSH



TFS-99108
WINDSWEPT ILLUMINATED



TFS-99110
GATHERING DITZY



TFS-99112
WILD AT HEART

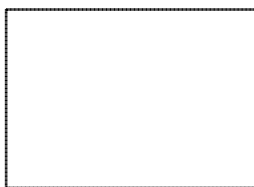


TFS-99113
GENTLE ROSEBUDS SOLAR

ADDITIONAL BLENDERS FOR THIS PROJECT



PE-418
TILE BLUE



PE-433
SNOW



Hexie Soiree

FINISHED SIZE | 48" x 48"

FABRIC REQUIREMENTS

Fabric A	TFS-99112	½ yd.
Fabric B	TFS-99106	½ yd.
Fabric C	TFS-99113	½ yd.
Fabric D	TFS-99100	½ yd.
Fabric E	TFS-99108	½ yd.
Fabric F	TFS-99110	½ yd.
Fabric G	TFS-99102	¼ yd.
Fabric H	PE-418	1 yd.
Fabric I	PE-433	1 ¼ yd.

BACKING FABRIC
TFS-99109 3 ¼ yds (Suggested)

BINDING FABRIC
Fabric **G** TFS-99102 (Included)

CUTTING DIRECTIONS

¼" seam allowances are included.
WOF means width of fabric.

- Thirty-five (35) triangle template from fabrics **A, B, C, D, E & F**
- Twenty-four (24) ¾" x WOF strips from fabric **H**, sub-cut into one hundred and forty (140) 6 ½" x ¾" strips.
- Twenty-four (24) ⅝" x WOF strips from fabric **H**, subcut into seventy (70) 12 ½" x ⅝" strips.
- Forty-two (42) 1" x WOF strips from fabric **I**, sub-cut into two hundred and ten (210) 8" x 1" strips.

CONSTRUCTION

Sew all rights sides together with ¼" seam allowance.

- Start with one (1) triangle template from fabric **B** and one (1) 6 ½" x ¾" strip from fabric **H**.
- Attach the fabric **H** strip to the right side of the triangle, align it and make sure that the ends of fabric **H** strip are even on both sides.
- Trim the excess fabric from the strip and press open.
- You'll end up with one **HB** triangle.
- Make a total of thirty five (35) **HB** triangles.

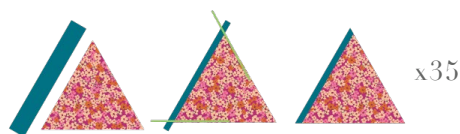


DIAGRAM 1

- Repeat the previous steps but this time with one (1) triangle template from fabric **E** and one (1) 6 ½" x ¾" strip from fabric **H**.
- Make a total of thirty five (35) **HE** triangles.



DIAGRAM 2

- Repeat the previous steps but this time with one (1) triangle template from fabric **C** and one 6 ½" x ¾" strip from fabric **H**.
- Attach the strip to the left side of the triangle this time.
- Make a total of thirty five (35) **CH** triangles.



DIAGRAM 3

- Repeat the previous steps but this time with one (1) triangle template from fabric **F** and one (1) $6\frac{1}{2} \times \frac{3}{4}$ " strip from fabric **H**.
- Attach the strip to the left side of the triangle this time.
- Make a total of thirty five (35) **FH** triangles.



DIAGRAM 4

HEXIE TOP CONSTRUCTION

- Bring one (1) **FH** triangle and one triangle template from fabric **D**.
- Attach the triangles together as shown in the diagram below.
- Make sure to attach triangle template from fabric **D** to the top of **FH** triangle, the triangles are not the same size so you won't be able to go all the way down triangle **FH**, no worries, just trim down the excess fabric on the left bottom corner.
- When trimming, follow the left side of triangle **D** to align with your ruler.



DIAGRAM 5

- Bring one **HE** triangle and attach it to the left side of the previously made piece as shown in the diagram below.



DIAGRAM 6

- Bring one (1) $12\frac{1}{2} \times \frac{5}{8}$ " strip from fabric **H** and attach it to the bottom of the previously made piece as shown in the diagram below.
- Make sure that the ends of fabric **H** strip are even on both sides and trim the excess fabric from the fabric **H** strip using the right and left sides of the block to align with your ruler.



DIAGRAM 7

- Bring three (3) 8×1 " strips from fabric **I**.
- Attach one (1) of the strips to the top edge of the previously made piece as shown in the diagram below.
- Make sure that the ends of fabric **I** strip are even on both sides and trim the excess fabric from the fabric **I** strip using the right and left sides of the block to align with your ruler.



DIAGRAM 8

- Attach the other two (2) 8×1 " strips from fabric **I** to the left and right sides of the previously made piece.
- Make sure that the ends of fabric **I** strips are even on both sides and trim the excess fabric from the fabric **I** strips using the top and bottom sides of the block to align with your ruler.
- Make a total of thirty five (35).



DIAGRAM 9

HEXIE BOTTOM CONSTRUCTION

- Bring one **CH** triangle and one template triangle from fabric **A**.
- Attach the triangles together as shown in the diagram below.
- Make sure to attach template triangle **A** from the top of **CH** triangle, the triangles are not the same size so you won't be able to go all the way down triangle **CH**, no worries, just trim down the excess fabric on the left bottom corner.
- When trimming, follow the left side of triangle **A** to align with your ruler.



DIAGRAM 10

- Bring one (1) **HB** triangle and attach it to the left side of the previously made piece as shown in the diagram below.



DIAGRAM 11

- Bring one (1) 12 1/2" X 5/8" strip from fabric **H** and attach it to the bottom of the previously made piece as shown in the diagram below.
- Make sure that the ends of fabric **H** strip are even on both sides and trim the excess fabric from the fabric **H** strip using the right and left sides of the block to align with your ruler.



DIAGRAM 12

- Bring three 8" x 1" strips from fabric **I**.
- Attach one of the strips to the top edge of the previously made piece as shown in the diagram below.
- Make sure that the ends of fabric **I** strip are even on both sides and trim the excess fabric from the fabric **I** strip using the right and left sides of the block to align with your ruler.

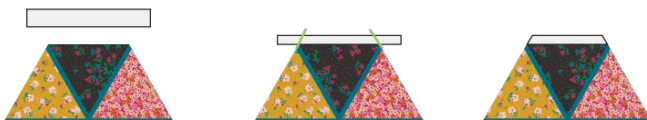


DIAGRAM 13

- Attach the other two 8" x 1" strips from fabric **I** to the left and right sides of the previously made piece.
- Make sure that the ends of fabric **I** strips are even on both sides and trim the excess fabric from the fabric **I** strips using the top and bottom sides of the block to align with your ruler.
- Make a total of thirty five (35).



DIAGRAM 14

- Take thirty one (31) top and bottom hexies and attach them together as shown in the diagram below.

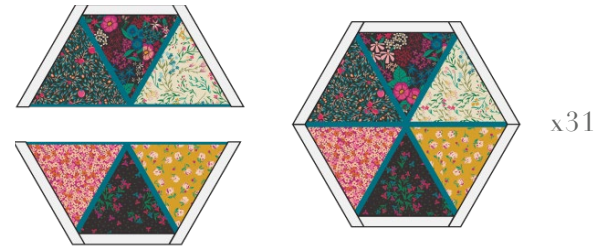


DIAGRAM 15

- You should remain with four (4) top and bottom hexies.

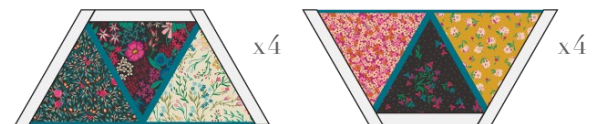


DIAGRAM 16

ASSEMBLING THE QUILT TOP

- Two (2) sets of columns are needed to construct this quilt top.
- It is very important to stop 1/4" before the end of each side of the hexagon. You can trace dots on the wrong side of the previously made hexagons 1/4" away from each corner, use the diagram as a reference.
- Sew the seams, beginning and ending at the dots (backstitch to secure the stitching at each end).
- Do not sew past the dot in either direction, stop just shy of the dot.
- You don't need to mark all the dots on each hexagon if you are comfortable with your 1/4" seam allowance, but accurate sewing is important in order for your hexagon seams to lay flat.
- Each column of hexagons will be sewn together in this manner.

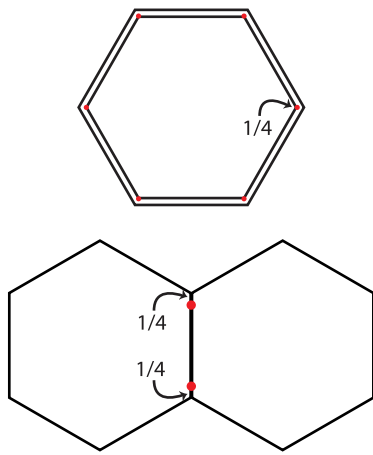


DIAGRAM 17

- For Column #1 take five (5) hexie blocks and attach them together.
- Sew the hexis together in columns by aligning the raw edges that are on the straight of grain, right sides together, and stitching with a $\frac{1}{4}$ " seam allowance.
- Sew together in pairs of two, then press the seams open.
- Sew pairs together, continuing until the desired number of hexis are sewn together.
- Press.
- Make a total of three (3) Columns #1.



DIAGRAM 18

- For Column #2 take four (4) hexie blocks and one (1) top and bottom hexies.
- Attach them together, starting with the bottom hexie, followed by the four (4) hexies and finally attach the top hexie.
- Make a total of four (4) Columns #2

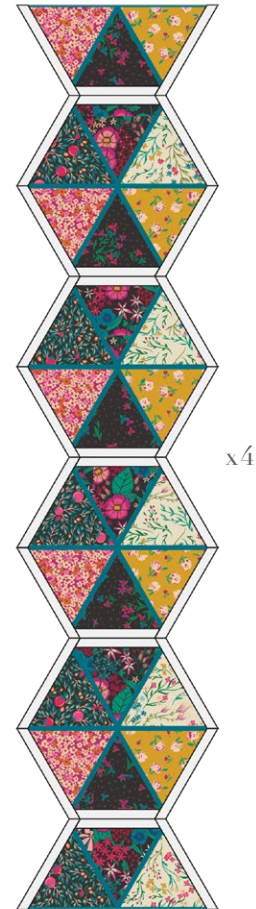


DIAGRAM 19

- Attach the columns , alternating #2 and #1 as shown in the diagram below.



DIAGRAM 20

- Trim it to 48" x 48"

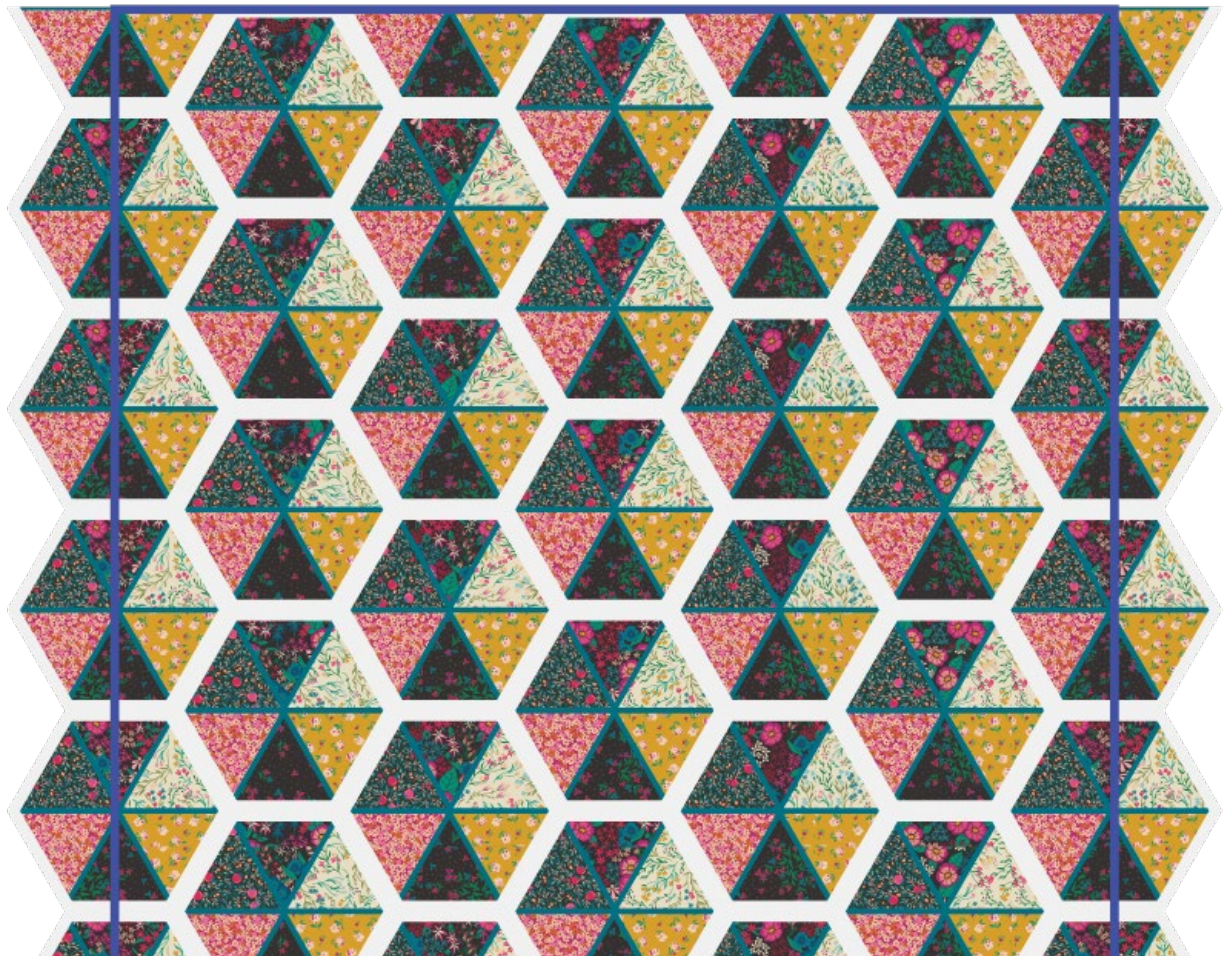


DIAGRAM 21

QUILT ASSEMBLY

Sew rights sides together.

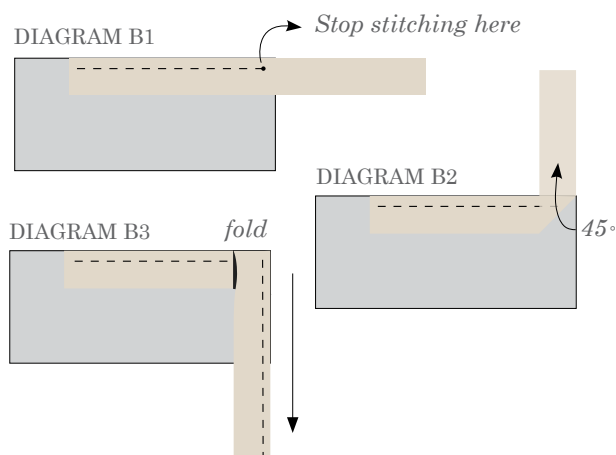
- Place BACKING FABRIC on a large surface wrong side up. Stretch it with masking tape against that surface.
- Place BATTING on top of backing fabric.
- Place TOP on top of the batting with right side facing up. Smooth away wrinkles using your hands.
- Pin all layers together and baste with basting thread, using long stitches. You can also use safety pins to join the layers.
- Machine or hand quilt starting at the center and working towards the corners. Remember that quilting motifs are a matter of personal preference. Have fun choosing yours!
- After you finished, trim excess of any fabric or batting, squaring the quilt to proceed to bind it.

- Stop stitching before you reach the last 5 or 6 inches. Cut the threads and remove the quilt from under the machine presser foot. Lay the loose ends of the binding flat along the quilt edge, folding the ends back on themselves where they meet. Press them together to form a crease. Using this crease as the stitching line, sew the two open ends of the binding with right sides together (you can help yourself marking with a pencil if the crease is difficult to see).
- Trim seam to $\frac{1}{4}$ " and press open. Complete the sewing. Turn binding to back of the quilt, turn raw edge inside and stitch by hand using blind stitch.

BINDING

Sew rights sides together.

- Cut enough strips $1\frac{1}{2}$ " wide by the width of the fabric **G** to make a final strip 202" long. Start sewing the binding strip in the middle of one of the sides of the quilt, placing the strip right side down and leaving an approximated 5" tail. Sew with $\frac{1}{4}$ " seam allowance (using straight stitch), aligning the strip's raw edge with the quilt top's raw edge.
- Stop stitching $\frac{1}{4}$ " before the edge of the quilt (DIAGRAM B 1). Clip the threads. Remove the quilt from under the machine presser foot. Fold the strip in a motion of 45° and upward, pressing with your fingers (DIAGRAM B2). Hold this fold with your finger, bring the strip down in line with the next edge, making a horizontal fold that aligns with the top edge of the quilt (DIAGRAM B3). Start sewing at $\frac{1}{4}$ " of the border, stitching all the layers. Do the same in the four corners of the quilt.



XXXXXXXXXXXXXXXXXXXXXXXXXXXXXXXXXXXX

*Congratulations
& enjoy*

XXXXXXXXXXXXXXXXXXXXXXXXXXXXXXXXXXXX



artgalleryfabrics.com

NOTE: While all possible care has been taken to ensure the accuracy of this pattern, We are not responsible for printing errors or the way in which individual work varies.

Please read instructions carefully before starting the construction of this quilt. If desired, wash and iron your fabrics before starting to cut.

© 2020 Courtesy of Art Gallery Quilts LLC. All Rights Reserved.

TEMPLATE

1" TEST SQUARE

