

Finished Size: 30 1/2" x 30 1/2".

## Fabrics:



Fabrics A to L  
1 yard



Fabrics M & N  
Fat Eighth



Fabrics M & N  
Fat Eighth



Fabrics O & P  
Fat Eighth



Fabrics Q, R & S  
Fat Eighth



Fabrics T to W  
Fat Quarter



Fabric X  
Fat Eighth



Fabric Y  
Fat Eighth



Fabrics Z & AA  
5/8 yard



Fabric BB  
1/2 yard



Backing  
1 1/8 yards

## Cutting:

Background	2 - 3 1/2" squares	A
	2 - 3" x 3 1/2" rectangles	B
	2 - 2 1/2" squares	C
	2 - 2" x 24 1/2" strips	D
	2 - 2" x 21 1/2" strips	E
	2 - 2" x 15 1/2" strips	F
	2 - 2" x 12 1/2" strips	G
	1 - 1 3/4" x 3 1/2" rectangle	H
	48 - 1 1/2" x 1 3/4" rectangles	I
	60 - 1 1/2" squares	J
	4 - 1 1/4" squares	K
48 - 1" squares	L	
Blue Flowers	<i>From each print cut:</i>	
	8 - 1 1/2" x 3 1/2" rectangles	M
Yellow Flowers	8 - 1 1/2" squares	N
	14 - 1 1/2" x 3 1/2" rectangles	O
Basket Handel & Flower Centers	14 - 1 1/2" squares	P
	1 - 2" x 12 1/2" rectangle	Q
Stem	2 - 2" x 6" rectangles	R
	15 - 1 1/2" squares	S
	2 - 1 3/4" squares	T
	24 - 1 1/2" x 1 3/4" rectangles	U
Basket Accent	12 - 1" x 3 1/2" rectangles	V
	1 - 1" x 1 3/4" rectangle	W
	1 - 1 1/2" x 12 1/2" rectangle	X
Basket	1 - 4 1/2" x 12 1/2" rectangle	Y
Outer Border	2 - 3 1/2" x 24 1/2" strips	Z
	2 - 3 1/2" x 30 1/2" strips	AA
Binding	4 - 2 1/4" x width of fabric strips	BB

Donate to *Make a Wish!*

#SerendipityQAL

<http://site.wish.org/goto/serendipity>



Use 1/4" seams and press as arrows indicate throughout.

## Block Assembly:

Draw a diagonal line on the wrong side of the Fabric J squares.

With right sides facing, layer a Fabric J square on one end of a Fabric O rectangle.

Stitch on the drawn line and trim 1/4" away from the seam.



Repeat on the opposite end.

Yellow Outer Flower Unit should measure 1 1/2" x 3 1/2".



Assemble two Fabric P squares and one Fabric S square.

Yellow Middle Flower Unit should measure 1 1/2" x 3 1/2".



Assemble two Yellow Outer Flower Units and one Yellow Middle Flower Unit.

Yellow Flower Unit should measure 3 1/2" x 3 1/2".



With right sides facing, layer a Fabric J square on one end of a Fabric M rectangle.

Stitch on the drawn line and trim 1/4" away from the seam.



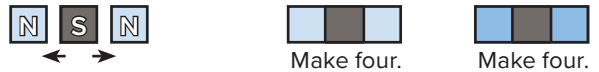
Repeat on the opposite end.

Blue Outer Flower Unit should measure 1 1/2" x 3 1/2".



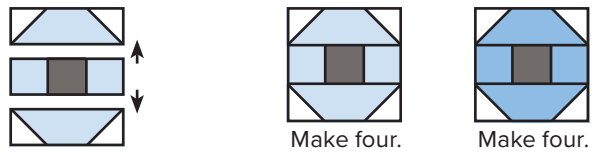
Assemble two matching Fabric N squares and one Fabric S square.

Blue Middle Flower Unit should measure 1 1/2" x 3 1/2".



Assemble two matching Blue Outer Flower Units and one matching Blue Middle Flower Unit.

Blue Flower Unit should measure 3 1/2" x 3 1/2".



Draw a diagonal line on the wrong side of the Fabric K squares.

With right sides facing, layer a Fabric K square on the top right corner of a Fabric T square.

Stitch on the drawn line and trim 1/4" away from the seam.



Repeat on the bottom left corner.

Large Leaf Unit should measure 1 3/4" x 1 3/4".



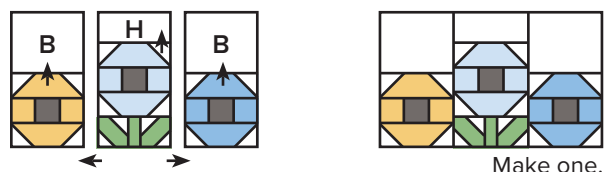
Assemble two Large Leaf Units and the Fabric W rectangle.

Large Leaf Unit should measure 1 3/4" x 3 1/2".



Assemble Unit.

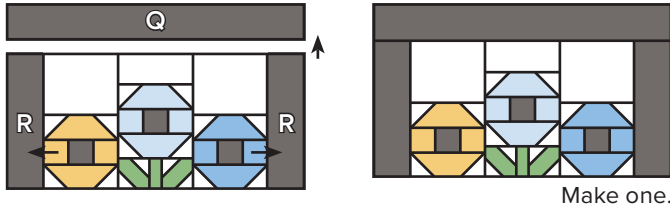
Middle Flower Basket Unit should measure 6" x 9 1/2".





Assemble two Fabric R rectangles, the Middle Flower Basket Unit and the Fabric Q rectangle.

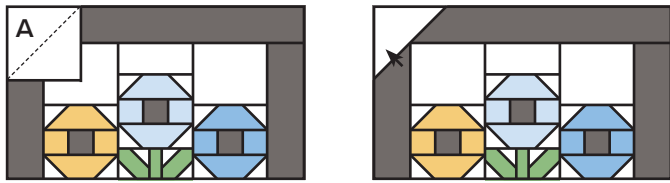
Partial Top Basket Unit should measure 7 1/2" x 12 1/2".



Draw a diagonal line on the wrong side of the Fabric A squares.

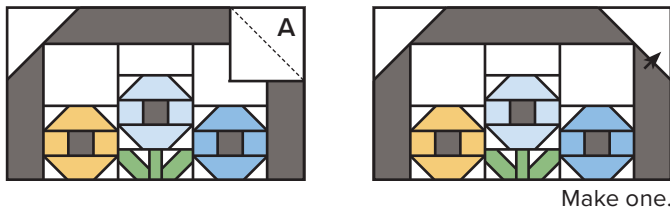
With right sides facing, layer a Fabric A square on the top left corner of the Partial Top Basket Unit.

Stitch on the drawn line and trim 1/4" away from the seam.



Repeat on the top right corner.

Top Basket Unit should measure 7 1/2" x 12 1/2".



Draw a diagonal line on the wrong side of the Fabric C squares.

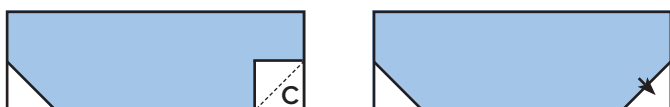
With right sides facing, layer a Fabric C square on the bottom left corner of the Fabric Y rectangle.

Stitch on the drawn line and trim 1/4" away from the seam.



Repeat on the bottom right corner.

Bottom Basket Unit should measure 4 1/2" x 12 1/2".

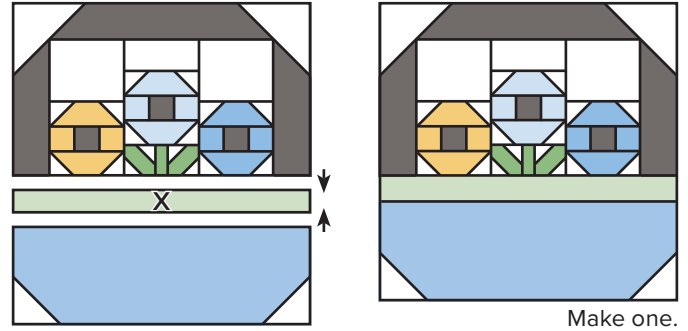


Make one. 3 of 5

## Quilt Center:

Assemble Quilt Center.

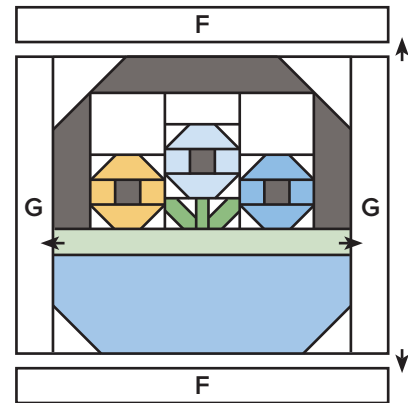
Quilt Center should measure 12 1/2" x 12 1/2".



## First Borders:

Attach side first borders using the Fabric G strips.

Attach top and bottom first borders using the Fabric F strips.

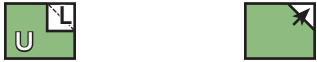


## Second Borders:

Draw a diagonal line on the wrong side of the Fabric L squares.

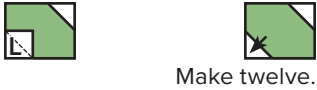
With right sides facing, layer a Fabric L square on the top right corner of a Fabric U rectangle.

Stitch on the drawn line and trim  $\frac{1}{4}$ " away from the seam.



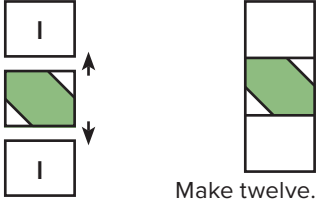
Repeat on the bottom left corner.

Partial Left Leaf Unit should measure  $1\frac{1}{2}$ " x  $1\frac{3}{4}$ ".



Assemble two Fabric I rectangles and one Partial Left Leaf Unit.

Left Leaf Unit should measure  $1\frac{3}{4}$ " x  $3\frac{1}{2}$ ".



With right sides facing, layer a Fabric L square on the top left corner of a Fabric U rectangle.

Stitch on the drawn line and trim  $\frac{1}{4}$ " away from the seam.



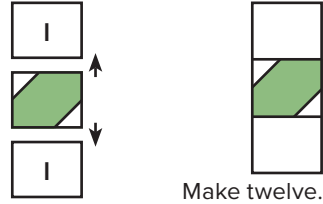
Repeat on the bottom right corner.

Partial Right Leaf Unit should measure  $1\frac{1}{2}$ " x  $1\frac{3}{4}$ ".



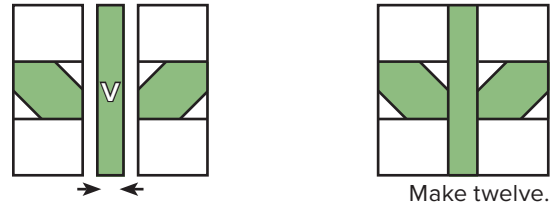
Assemble two Fabric I rectangles and one Partial Right Leaf Unit.

Right Leaf Unit should measure  $1\frac{3}{4}$ " x  $3\frac{1}{2}$ ".



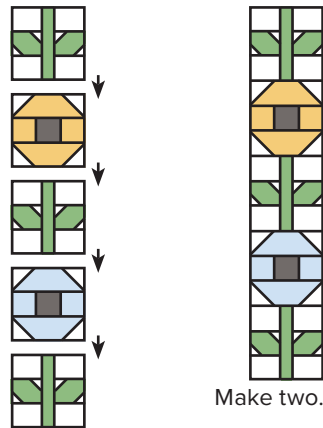
Assemble one Left Leaf Unit, one Fabric V rectangle and one Right Leaf Unit.

Stem Unit should measure  $3\frac{1}{2}$ " x  $3\frac{1}{2}$ ".



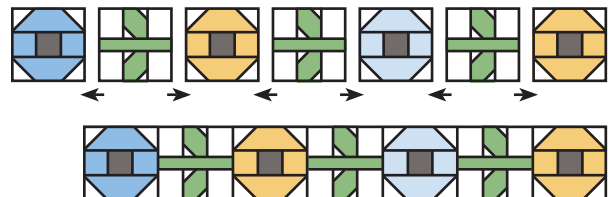
Assemble three Stem Units, one Yellow Flower Unit and one Blue Flower Unit.

Side Second Border should measure  $3\frac{1}{2}$ " x  $15\frac{1}{2}$ ".



Assemble two Blue Flower Units, three Stem Units and two Yellow Flower Units.

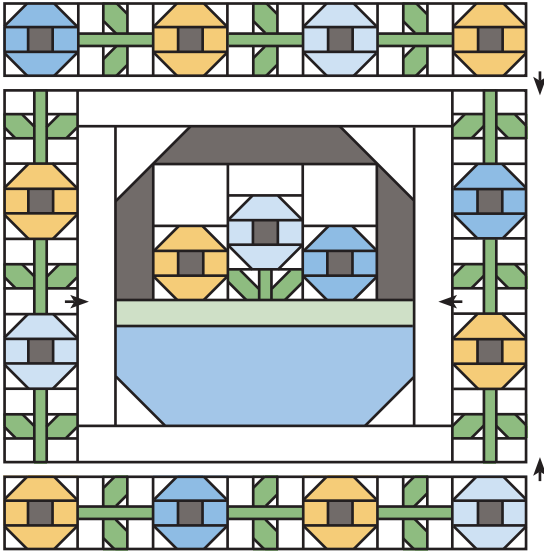
Top and Bottom Second Border should measure  $3\frac{1}{2}$ " x  $21\frac{1}{2}$ ".





Attach the Side Second Borders.

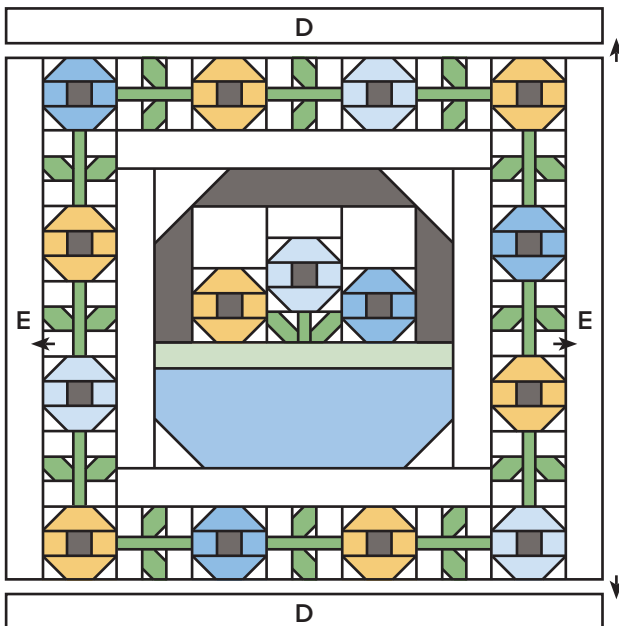
Attach the Top and Bottom Second Borders.



*Third Borders:*

Attach third side borders using the Fabric E strips.

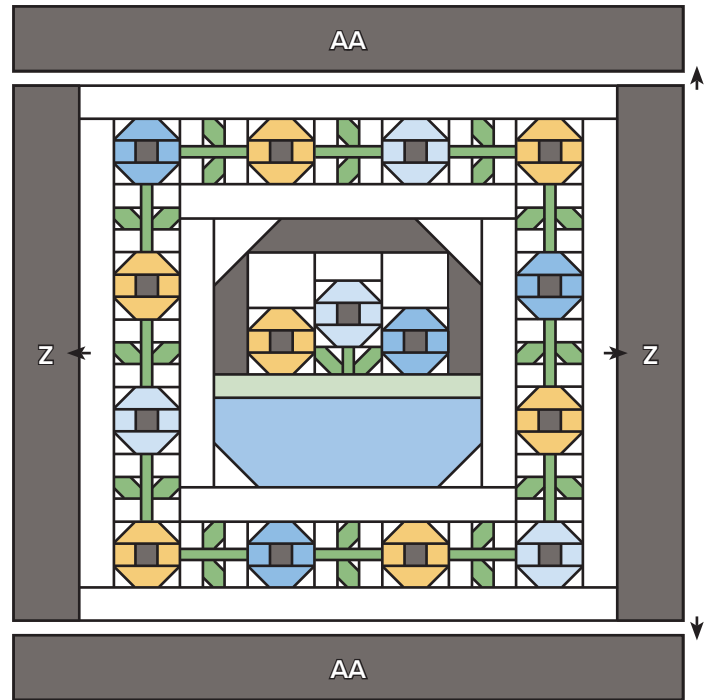
Attach third top and bottom borders using the Fabric D strips.



*Fourth Borders:*

Attach fourth side borders using the Fabric Z strips.

Attach fourth top and bottom borders using the Fabric AA strips.



*Finishing:*

Piece the Fabric BB strips end to end for binding.

Quilt and bind as desired.