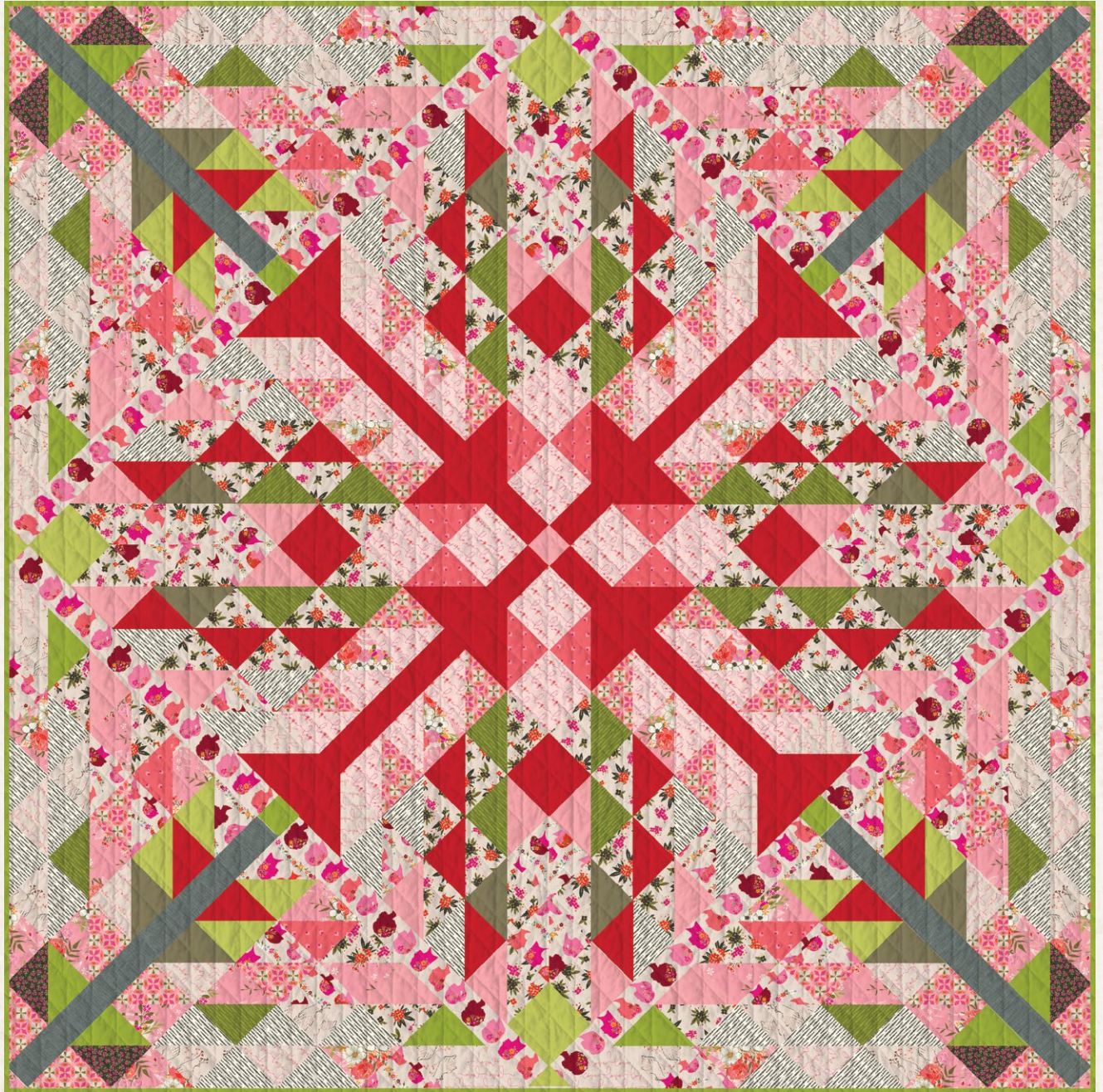


featuring OPEN HEART COLLECTION BY MAUREEN CRACKNELL

KINDRED Souls



FREE PATTERN

XXXXXXXXXXXXXXXXXXXXXXXXXXXX



KINDRED Souls

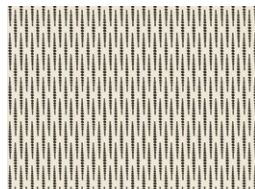
QUILT DESIGNED BY AGFstudio



FABRICS DESIGNED BY MAUREEN CRACKNELL



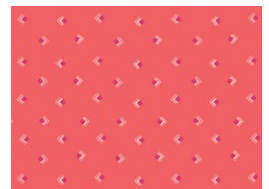
OPH-14350
FLOWERING LOVE



OPH-14351
REFLECTIONS TINTED



OPH-14352
CHERISHED GATHERINGS
GLOOM



OPH-14353
EVERLASTING TOKENS
CORAL



OPH-14354
BETTER TOGETHER



OPH-14356
WRITTEN LOVE LOUD



OPH-14357
SWEET FLORET CERISE



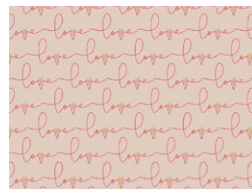
OPH-14358
UNIQUE BEAUTY VIVID



OPH-24351
REFLECTIONS VERDANT



OPH-24355
BLOOMING ESSENCE



OPH-24356
WRITTEN LOVE SOFT



FEEL THE DIFFERENCE © 2021 Courtesy of Art Gallery Quilts LLC. All Rights Reserved.

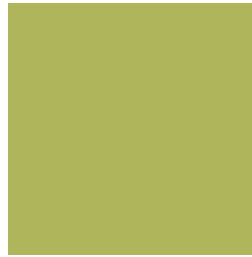
ADDITIONAL BLENDERS FOR THIS PROJECT



PE-411
QUARTZ PINK



PE-414
DARK CITRON



PE-423
APPLETINI



PE-468
DRIED MOSS



PE-490
RUBY



DEN-S-2002
COOL FOLIAGE

FABRIC REQUIREMENTS

Fabric A	OPH-24356	½ yd.
Fabric B	OPH-14350	¾ yd.
Fabric C	OPH-14351	¾ yd.
Fabric D	OPH-14353	FQ.
Fabric E	PE-468	FQ.
Fabric F	PE-423	½ yd.
Fabric G	OPH-14354	FQ.
Fabric H	OPH-14357	FQ.
Fabric I	DEN-S-2002	⅜ yd.
Fabric J	PE-414	⅝ yd.
Fabric K	OPH-14358	1½ yd.
Fabric L	OPH-14352	⅞ yd.
Fabric M	PE-490	⅞ yd.
Fabric N	OPH-24355	½ yd.
Fabric O	OPH-24351	⅜ yd.
Fabric P	PE-411	⅜ yd.
Fabric Q	OPH-14356	⅝ yd.

BACKING FABRIC
OPH-14351 5 yds *(Suggested)*

BINDING FABRIC
Fabric **J** PE-414 *(Included)*

CUTTING DIRECTIONS

¼" seam allowances are included.
WOF means width of fabric.

- Fussy cut eight (8) 26½" x 2½" strips from fabric **K**.
- Cut ½" above the fuschia girl, and from there cut 2½" below. You will end up with four (4) strips with the girls looking to the right, and four (4) to the left.
- For fabric placement and cut, follow diagram 1:

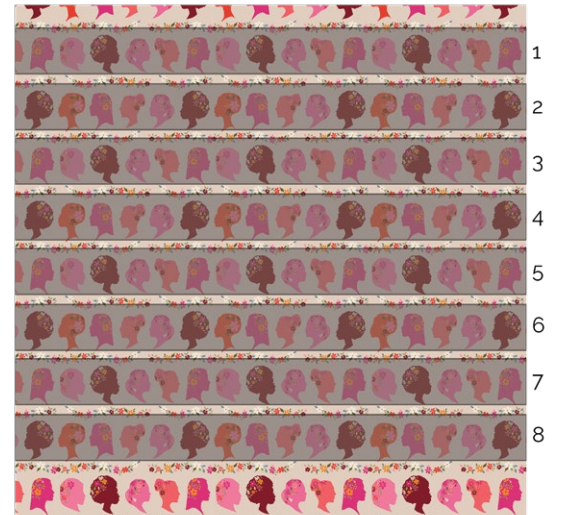


DIAGRAM 1

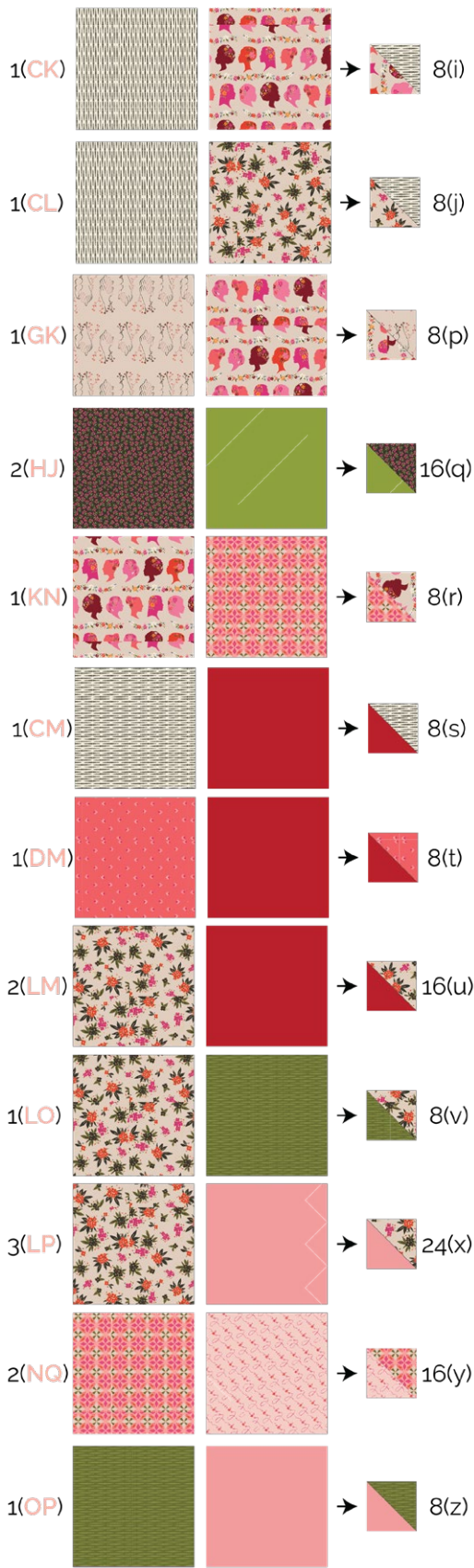


DIAGRAM 2

- Take all the 4½" squares and the HSTs to make four (4) of Block 1, Block 2, Block 3, and Block 4. Then trim them to a perfect triangle:

Block 1 (x 4)

- Row 1: **N**
- Row 2: **B** - q
- Row 3: **C** - h - l
- Row 4: **C** - a - f - b
- Row 5: **K** - d - p - r - o
- Row 6: **A** - q - x - k - e - n

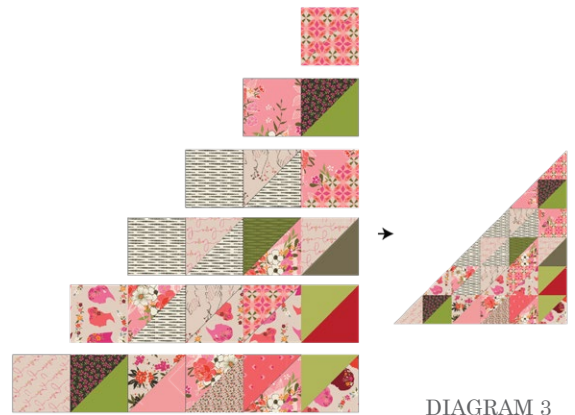


DIAGRAM 3

Block 2 (x 4)

- Row 1: **N**
- Row 2: q - **B**
- Row 3: l - h - **C**
- Row 4: b - f - a - **C**
- Row 5: o - r - p - d - **K**
- Row 6: n - e - k - x - q - **A**

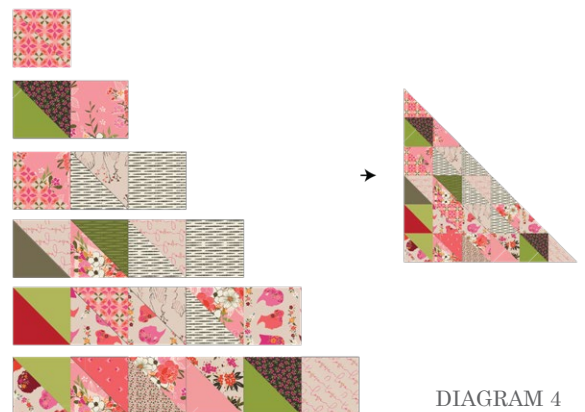


DIAGRAM 4

Block 3 (x 4)

- Row 1: F - x - s - x - i - c
- Row 2: K - m - u - s - y
- Row 3: K - z - u - g
- Row 4: M - v - y
- Row 5: Q - t
- Row 6: Q

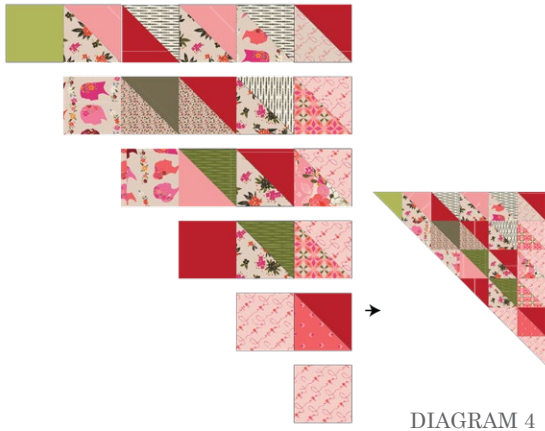


DIAGRAM 4

Block 4 (x 4)

- Row 1: c - i - x - s - x - F
- Row 2: y - s - u - m - K
- Row 3: g - u - z - K
- Row 4: y - v - M
- Row 5: t - Q
- Row 6: Q

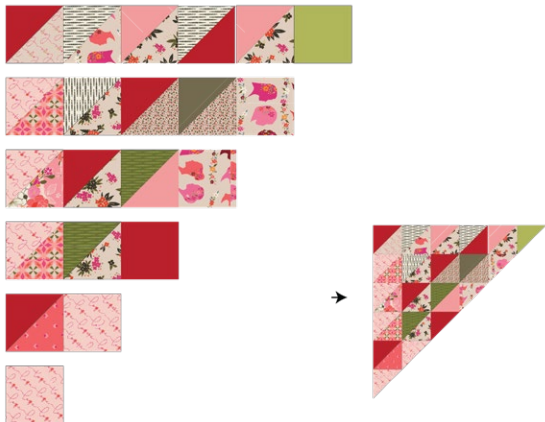


DIAGRAM 5

Block 5 (x 4)

- Take four (4) 2½" squares from fabric J, four (4) 26½" x 2½" strips from fabrics I and M, eight (8) 26½" x 2½" strips from fabric K and all the blocks.
- Join them as follows:
 - Row 1: Block 1 - I - Block 2
 - Row 1: K - J - K
 - Row 1: Block 3 - M - Block 4
- Make sure the square from fabric J is aligned with the strips from fabrics I and M.
- Follow the lines of the blocks to trim the tips of the strips from fabrics I, K, and M.

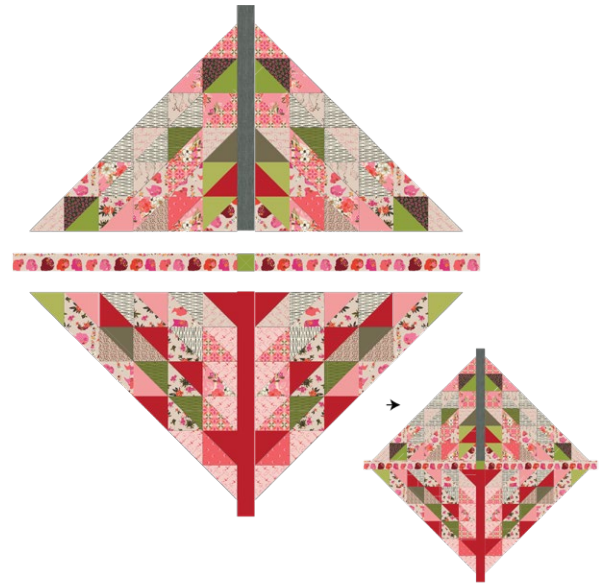


DIAGRAM 6

- Take four (4) 2" squares from fabrics B and P, and eight (8) 2" squares from fabric F.
- Use the corner square triangle technique to attach them to the corners of block 5 following diagram 7.

QUILT ASSEMBLY

Sew rights sides together.

- Place BACKING FABRIC on a large surface wrong side up. Stretch it with masking tape against that surface.
- Place BATTING on top of backing fabric.
- Place TOP on top of the batting with right side facing up. Smooth away wrinkles using your hands.
- Pin all layers together and baste with basting thread, using long stitches. You can also use safety pins to join the layers.
- Machine or hand quilt starting at the center and working towards the corners. Remember that quilting motifs are a matter of personal preference. Have fun choosing yours!
- After you finished, trim excess of any fabric or batting, squaring the quilt to proceed to bind it.



DIAGRAM 7

QUILT TOP

- Join all four (4) block 5, following diagram 8.

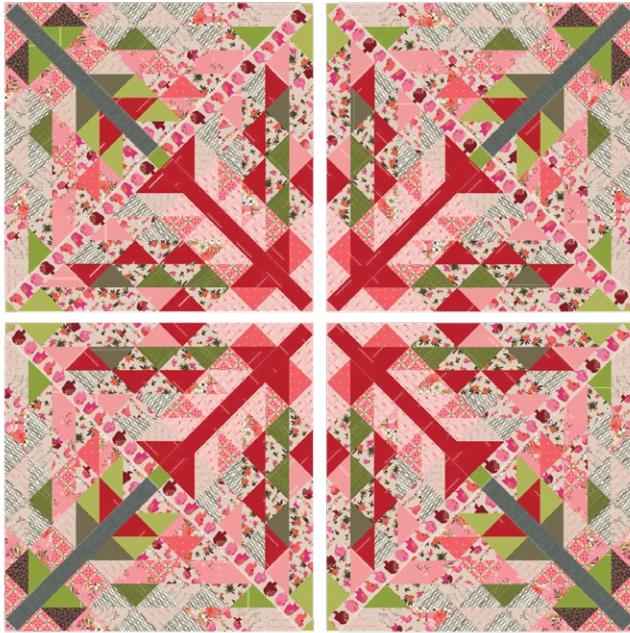


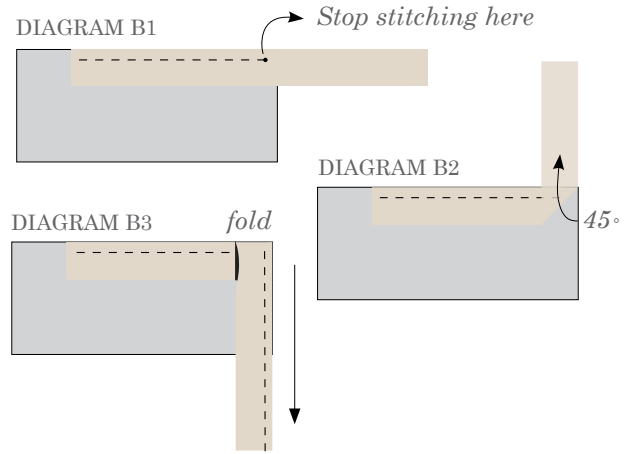
DIAGRAM 8

BINDING

Sew rights sides together.

- Cut enough strips 1½" wide by the width of the fabric **J** to make a final strip 306" long. Start sewing the binding strip in the middle of one of the sides of the quilt, placing the strip right side down and leaving an approximated 5" tail. Sew with ¼" seam allowance (using straight stitch), aligning the strip's raw edge with the quilt top's raw edge.
- Stop stitching ¼" before the edge of the quilt (DIAGRAM B 1). Clip the threads. Remove the quilt from under the machine presser foot. Fold the strip in a motion of 45° and upward, pressing with your fingers (DIAGRAM B2). Hold this fold with your finger, bring the strip down in line with the next edge, making a horizontal fold that aligns with the top edge of the quilt (DIAGRAM B3). Start sewing at ¼" of the border, stitching all the layers. Do the same in the four corners of the quilt.

- Stop stitching before you reach the last 5 or 6 inches. Cut the threads and remove the quilt from under the machine presser foot. Lay the loose ends of the binding flat along the quilt edge, folding the ends back on themselves where they meet. Press them together to form a crease. Using this crease as the stitching line, sew the two open ends of the binding with right sides together (you can help yourself marking with a pencil if the crease is difficult to see).
- Trim seam to $\frac{1}{4}$ " and press open. Complete the sewing. Turn binding to back of the quilt, turn raw edge inside and stitch by hand using blind stitch.



XXXXXXXXXXXXXXXXXXXXXXXXXXXXXXXXXXXX

Congratulations & enjoy

XXXXXXXXXXXXXXXXXXXXXXXXXXXXXXXXXXXX



artgalleryfabrics.com

NOTE: While all possible care has been taken to ensure the accuracy of this pattern, We are not responsible for printing errors or the way in which individual work varies.

Please read instructions carefully before starting the construction of this quilt. If desired, wash and iron your fabrics before starting to cut.