



Mini Charm Chiffon

Quilt Pattern
Fat Quarter Shop Exclusive



Finished Size: 36 1/2" x 36 1/2"

CRIB QUILT

FABRIC REQUIREMENTS

- Four Mini Charm Packs or 140 - 2 1/2" squares
Shop Mini Charm Packs at:
www.fatquartershop.com/mini-charm-packs
- 1 yard background
- 1/2 yard binding
- 2 5/8 yards backing

CUTTING

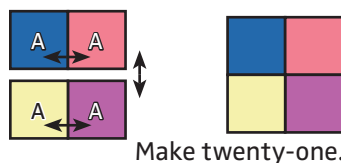
- 140 - 2 1/2" squares (Fabric A)
- Cut background fabric into:
24 - 4 1/2" squares (Fabric B)
36 - 2 1/2" x 4 1/2" rectangles (Fabric C)
16 - 2 1/2" squares (Fabric D)
- Cut binding fabric into:
5 - 2 1/2" x width of fabric strips (Fabric E)

Use 1/4" seams and press as arrows indicate throughout.

BLOCK ASSEMBLY:

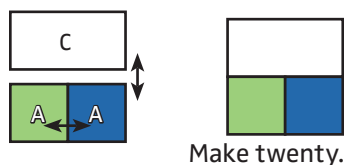
Assemble four Fabric A squares.

Four Patch Unit should measure 4 1/2" x 4 1/2".



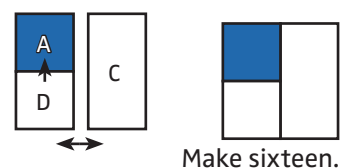
Assemble two Fabric A squares and one Fabric C rectangle.

Middle Unit should measure 4 1/2" x 4 1/2".



Assemble one Fabric A square, one Fabric D square and one Fabric C rectangle.

Corner Unit should measure 4 1/2" x 4 1/2".



Check out the
Tutorial on **YouTube**

Ready. Set. Sew!

#MiniCharmChiffonQuilt

www.FatQuarterShop.com

© 2021 Fat Quarter Shop, LLC. All rights reserved. Duplication of any kind is prohibited. This pattern may be used for personal purposes only and may not be reproduced without the express written permission from Fat Quarter Shop. This pattern may not be used for commercial purposes. This pattern may only be hosted, accessed, and downloaded from www.FatQuarterShop.com.

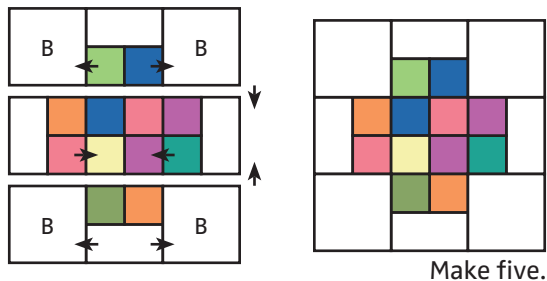


Mini Charm Chiffon

Quilt Pattern
Fat Quarter Shop Exclusive

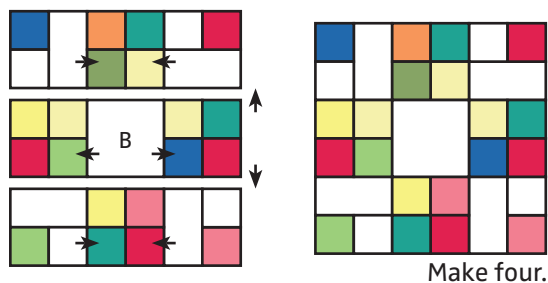
Assemble Block.

Mini Charm Chiffon Plus Block should measure 12 1/2" x 12 1/2".



Assemble Block.

Mini Charm Chiffon Patchwork Block should measure 12 1/2" x 12 1/2".

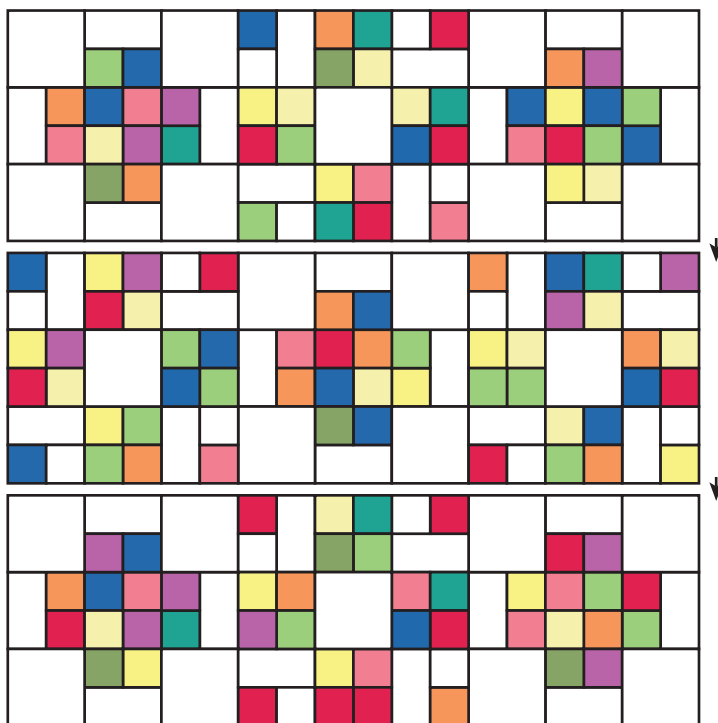


QUILT CENTER:

Assemble Quilt Center. Pay close attention to block placement.

Press rows in opposite directions.

Quilt Center should measure 36 1/2" x 36 1/2".



FINISHING:

Piece the Fabric E strips end to end.

Quilt and bind as desired.



Mini Charm Chiffon

Quilt Pattern
Fat Quarter Shop Exclusive

EXTRA QUILT SIZES

To make the quilt in different sizes, follow the Cutting and Quilt Assembly Instructions here and refer back to pages 1 - 2 for the Block Assembly.

LAP QUILT

Finished Size: 48 1/2" x 60 1/2"

FABRIC REQUIREMENTS

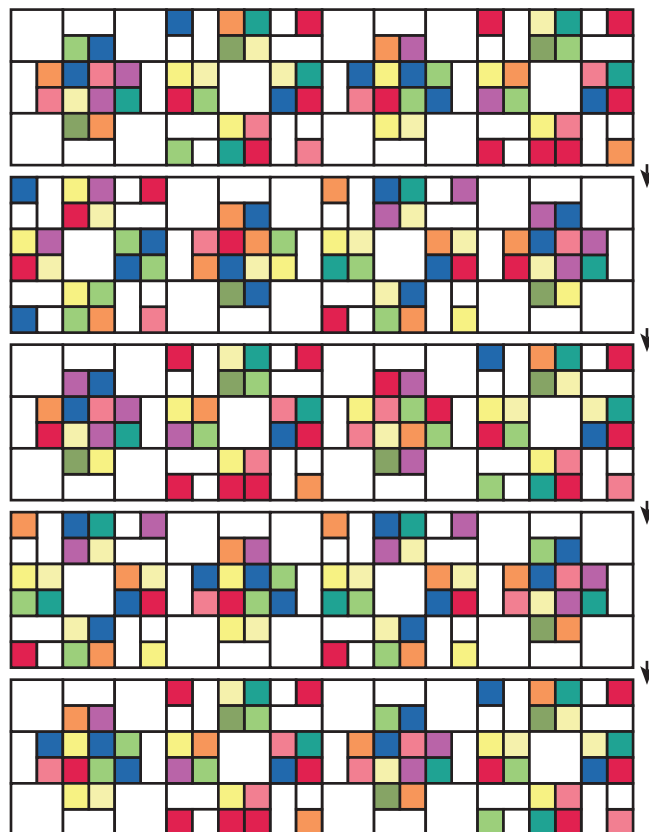
- Eight Mini Charm Packs or 320 - 2 1/2" squares
Shop Mini Charm Packs at:
www.fatquartershop.com/mini-charm-packs
- 2 yards background
- 5/8 yard binding
- 3 1/4 yards backing

CUTTING

- 320 - 2 1/2" squares (Fabric A)
- Cut background fabric into:
50 - 4 1/2" squares (Fabric B)
80 - 2 1/2" x 4 1/2" rectangles (Fabric C)
40 - 2 1/2" squares (Fabric D)
- Cut binding fabric into:
7 - 2 1/2" x width of fabric strips (Fabric E)

QUILT ASSEMBLY:

Make ten Mini Charm Chiffon Plus Blocks and ten Mini Charm Chiffon Patchwork Blocks.



FINISHING:

Piece the Fabric E strips end to end.
Quilt and bind as desired.



Mini Charm Chiffon

Quilt Pattern
Fat Quarter Shop Exclusive

TWIN QUILT

Finished Size: 72 1/2" x 84 1/2"

FABRIC REQUIREMENTS

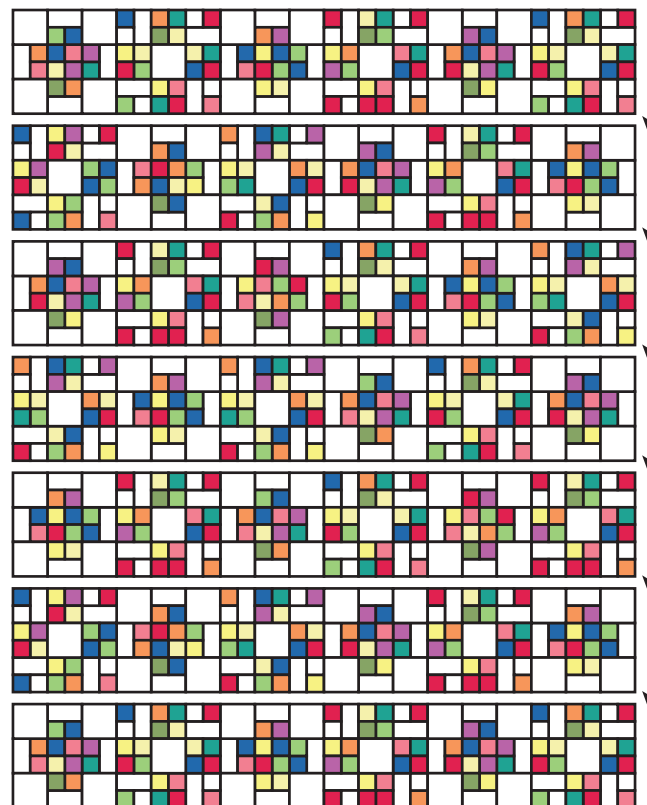
- Sixteen Mini Charm Packs or
672 - 2 1/2" squares
Shop Mini Charm Packs at:
www.fatquartershop.com/mini-charm-packs
- 3 7/8 yards background
- 7/8 yard binding
- 5 1/4 yards backing

CUTTING

- 672 - 2 1/2" squares (Fabric A)
- Cut background fabric into:
105 - 4 1/2" squares (Fabric B)
168 - 2 1/2" x 4 1/2" rectangles (Fabric C)
84 - 2 1/2" squares (Fabric D)
- Cut binding fabric into:
9 - 2 1/2" x width of fabric strips (Fabric E)

QUILT ASSEMBLY:

Make twenty-one Mini Charm Chiffon Plus Blocks and twenty-one Mini Charm Chiffon Patchwork Blocks.



FINISHING

Piece the Fabric E strips end to end.
Quilt and bind as desired.



Mini Charm Chiffon

Quilt Pattern
Fat Quarter Shop Exclusive

QUEEN QUILT

Finished Size: 84 1/2" x 96 1/2"

FABRIC REQUIREMENTS

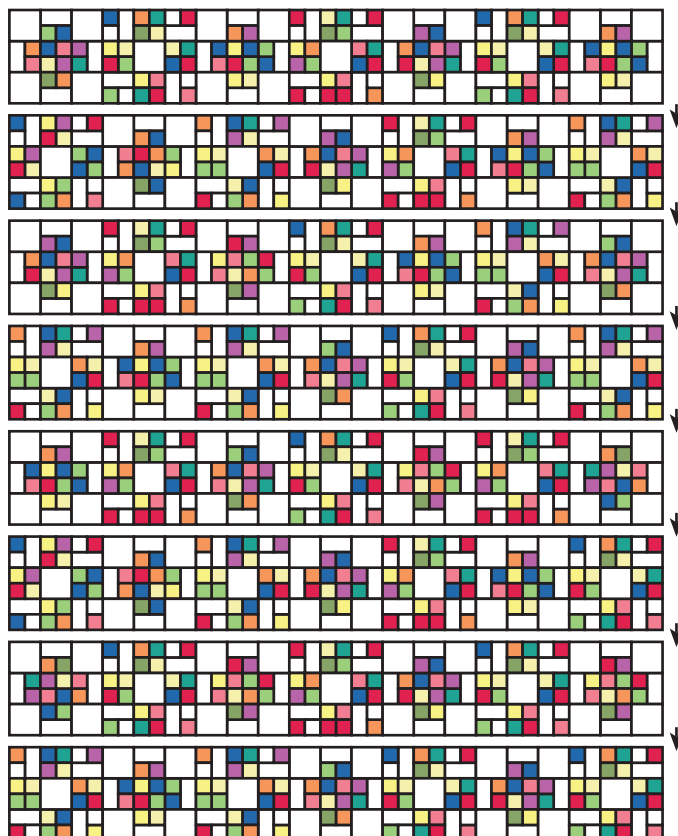
- Twenty-two Mini Charm Packs or 896 - 2 1/2" squares
Shop Mini Charm Packs at:
www.fatquartershop.com/mini-charm-packs
- 5 yards background
- 7/8 yard binding
- 7 7/8 yards backing

CUTTING

- 896 - 2 1/2" squares (Fabric A)
- Cut background fabric into:
140 - 4 1/2" squares (Fabric B)
224 - 2 1/2" x 4 1/2" rectangles (Fabric C)
112 - 2 1/2" squares (Fabric D)
- Cut binding fabric into:
10 - 2 1/2" x width of fabric strips (Fabric E)

QUILT ASSEMBLY:

Make twenty-eight Mini Charm Chiffon Plus Blocks and twenty-eight Mini Charm Chiffon Patchwork Blocks.



FINISHING

Piece the Fabric E strips end to end.
Quilt and bind as desired.