

FIGO

COLLECTION

PATTERN NAME

PATTERN DESIGNER

FABRIC DESIGNER

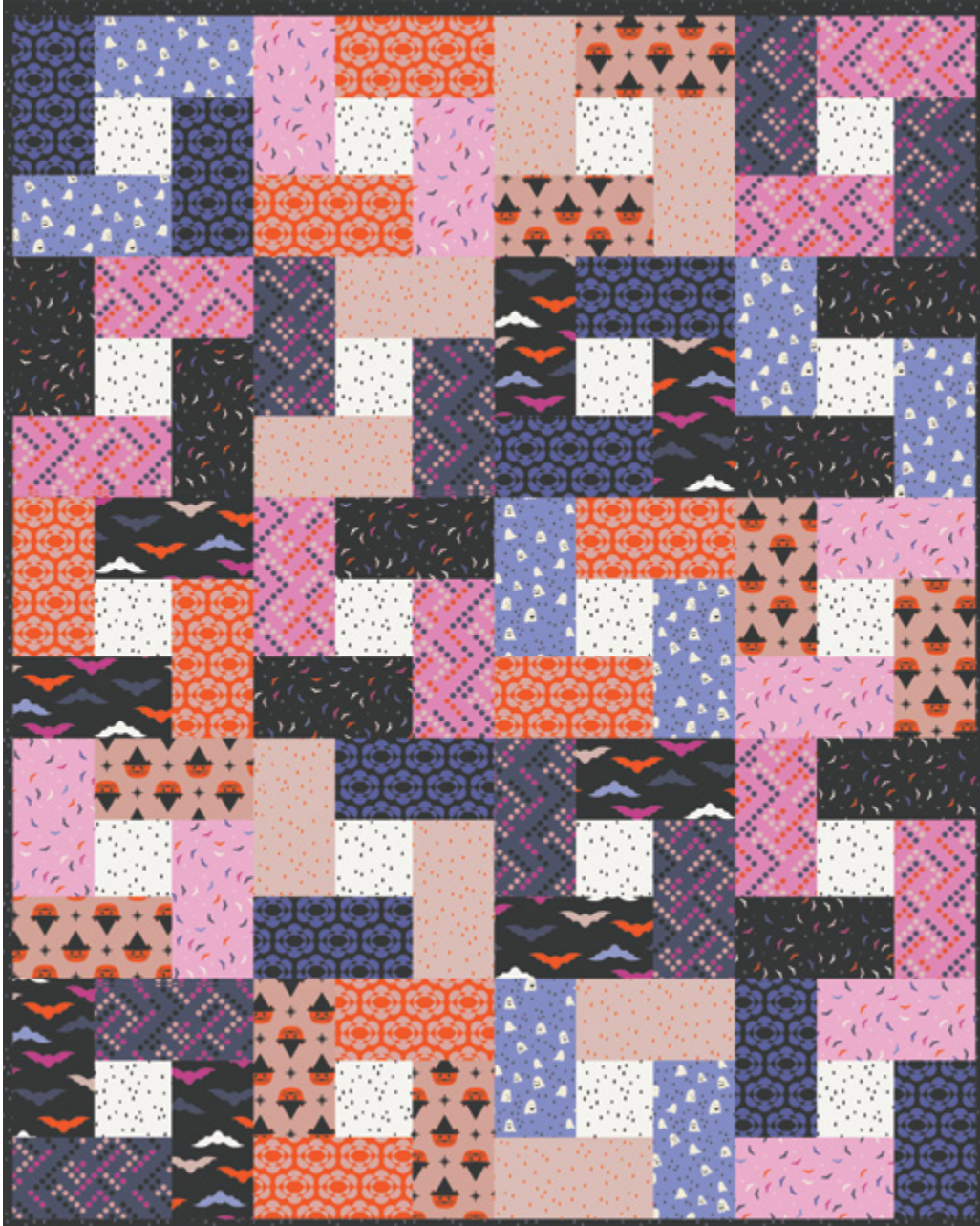
GHOST TOWN

AROUND THE BLOCK
- 12 FQS

[FIGO STUDIO](#)

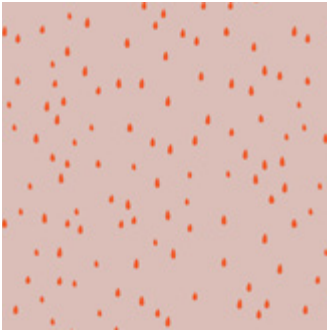
[DANA WILLARD](#) X FIGO

FQ FRIENDLY



48" x 60"

FABRIC REQUIREMENTS AND CUTTING



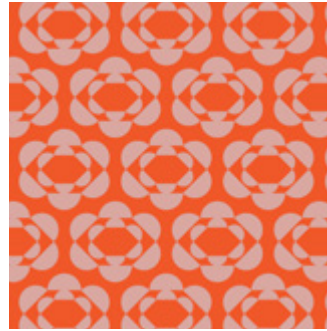
90523-14

¼ Yard | 0.3 Meter



90519-56

¼ Yard | 0.3 Meter



90522-56

¼ Yard | 0.3 Meter



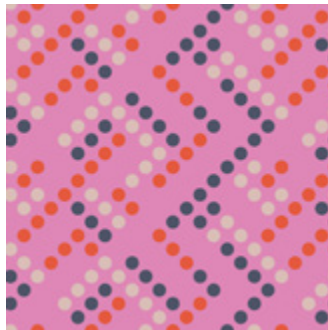
90521-56

¼ Yard | 0.3 Meter



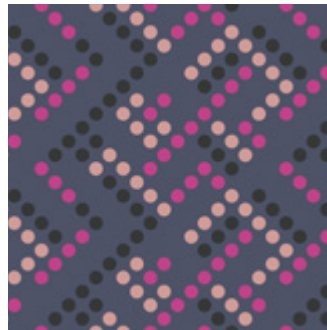
90518-21

¼ Yard | 0.3 Meter



90520-21

¼ Yard | 0.3 Meter



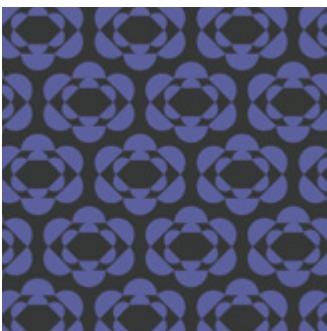
90520-45

¼ Yard | 0.3 Meter



90521-42

¼ Yard | 0.3 Meter



90522-99

¼ Yard | 0.3 Meter



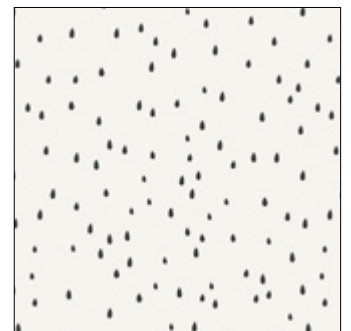
90517-99

¼ Yard | 0.3 Meter



90518-99

¼ Yard | 0.3 Meter



90523-10

¼ Yard | 0.3 Meter

*Backing fabric 3 yds | 2.8 meters 90519-56 recommended

Do not use requirements to cut kits

FABRIC REQUIREMENTS AND CUTTING



90523-99

½ Yard | 0.5 Meter Binding



90519-10

3 Yards | 2.8 Meters
Backing Fabric

*Backing fabric 3 yds | 2.8 meters 90519-10 recommended

Do not use requirements to cut kits

CURATED CUTS – AROUND THE BLOCK PATTERN SERIES

Around the Block in Fat Quarters

Finished Size 48" x 60"

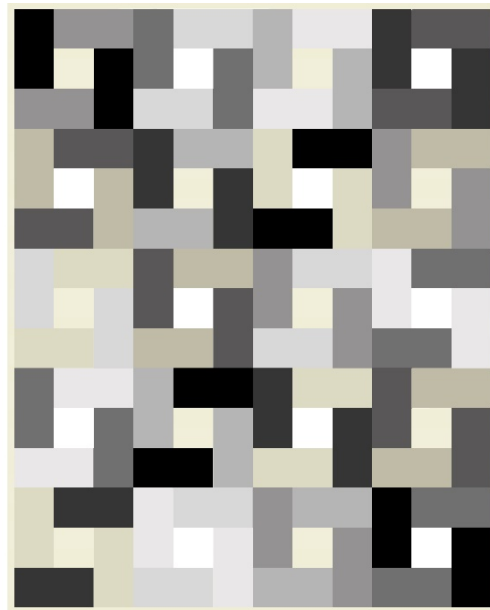
All seams are sewn using a $\frac{1}{4}$ " seam allowance

Requirements:

12 Coordinating Fat Quarters to complete the quilt top & optional scrappy binding

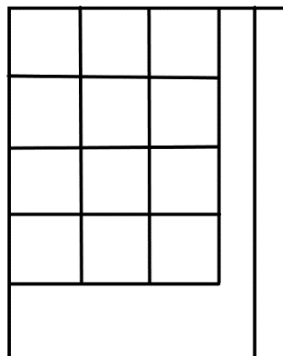
Solid Color Binding – $\frac{1}{2}$ yd (optional)

Crosswise Backing – 3 yds

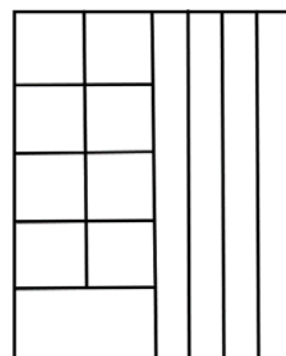


Cutting Instructions:

1. From the two lightest FQ's, cut 20 – $4\frac{1}{2}$ " x $4\frac{1}{2}$ " squares. (See Step 1a & 1b Cutting Diagrams).

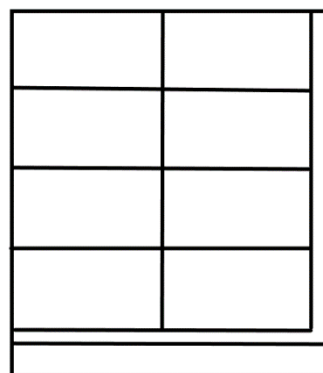


Step 1a Cutting Diagram (includes optional binding strip)



Step 1b Cutting Diagram (includes binding strips)

2. From each of the ten remaining FQ's, cut 4 – $8\frac{1}{2}$ " x $4\frac{1}{2}$ " rectangles. (See Step 2 Cutting Diagram).



Step 2 Cutting Diagram (includes optional binding strip)

Block Assembly:

1. Arrange two sets of rectangles from your medium (B & D) & dark (C & E) fabrics around a light (A) center square as shown in Diagram 1 (below).
2. Lining up the bottom edges with right sides together, sew A to B, starting approximately 2" from the top of A. Finger press the seam open. See Diagram 2 (below).
3. Join C to the A-B unit as shown in Diagram 3 (below), stitching the entire length of the seam. Press seam toward C.
4. Working counterclockwise, join D & E in the same manner, as shown in Diagram 4 (below).
5. Complete the block by finishing the partially sewn A-B seam from step 2. Fold over C and match the B edge to the A-E edge. Starting where the seam was left at the end of the A-B seam and backstitching to secure, finish the A-B seam as shown in Diagram 5 (below). Press seam toward B to complete the block. See Diagram 6 (below).
6. Repeat Steps 1-5 to make 20 blocks.

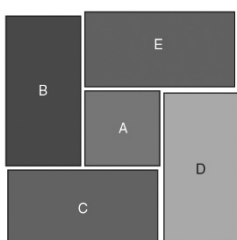


Diagram 1

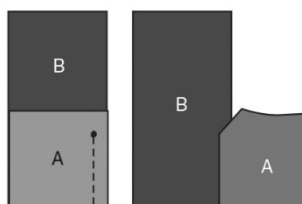


Diagram 2

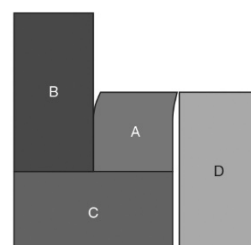


Diagram 3

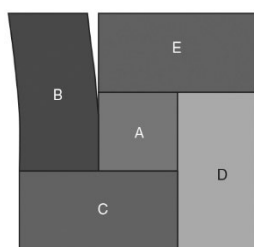


Diagram 4

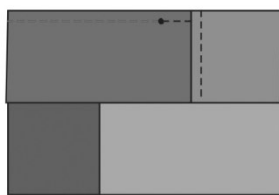


Diagram 5

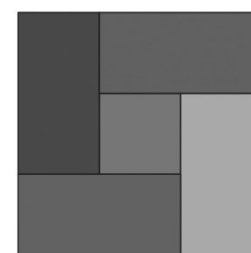


Diagram 6

Quilt Top Assembly:

1. Arrange blocks in five rows of four blocks each, turning and placing each block to your liking.
2. Sew blocks together in each row, then join rows.
3. Join binding strips and prepare binding.
4. Prepare backing by cutting backing fabric in half along length of fabric to get 2 – 1 ½ yd pieces. Join along selvage edges.
5. Layer quilt top with batting and backing. Quilt as desired. Bind using your favorite method.