

PATTERN NO.

0015-02

COTTON+STEEL

A DIVISION OF RJR FABRICS

| COLLECTION | PATTERN NAME | PATTERN DESIGNER | FABRIC DESIGNER |
|---------------|------------------|------------------|----------------------|
| KUJIRA & STAR | PAPER BOAT QUILT | COTTON + STEEL | RASHIDA COLEMAN-HALE |



60" x 60"

FABRIC REQUIREMENTS AND CUTTING



1948-2

Waves-Fog

3 1/2 yds

For Paper Piecing
Background Pieces-

Cut twenty six B

3" H x 8" W

Cut twenty six E

5" H x 4" W

Background Pieces-

Label each with the letter
shown. (WxH)

Cut one 39 1/2" x 5 1/2" A

Cut four 30 1/2" x 5 1/2" B

Cut one 9" x 5 1/2" C

Cut one 12 1/2" x 5 1/2" D

Cut one 21 1/2" x 5 1/2" E

Cut three 2 1/2" x 5 1/2" F

Cut one 15 1/2" x 5 1/2" G

Cut one 18 1/2" x 5 1/2" H

Cut two 38 1/2" x 5 1/2" J

Cut two 10" x 5 1/2" K

Cut one 41 1/2" x 5 1/2" L

Cut one 7" x 5 1/2" M

Cut one 20 1/2" x 5 1/2" N

Cut one 28" x 5 1/2" O

Cut one 42 1/2" x 5 1/2" Q

Cut one 4" x 5 1/2" R

Cut one 24 1/2" x 5 1/2" S

Cut one 8 1/2" x 5 1/2" T

Cut one 3 1/2" x 5 1/2" U

Cut one 40 1/2" x 5 1/2" V

Cut one 8" x 5 1/2" W



1950-1

Trajectory-Fog

1/8 yd

Cut four 4" x 8"

Cut two 1 1/2" x 5 1/4"



1951-1

School-Salt Water

1/8 yd

Cut four 3 1/4" x 4 1/4"

Cut four 1 1/2" x 5 1/4"



1951-2

School-Marine

1/8 yd

Cut four 3 1/4" x 4 1/4"

Cut two 1 1/2" x 5 1/4"



1952-1

Sea Urchin-Deep

1/4 yd

Cut six 1 1/2" x 5 1/4"

Cut four 4" x 8"

FABRIC REQUIREMENTS AND CUTTING

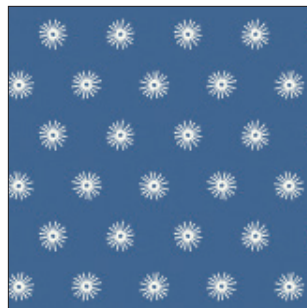


1952-2

Sea Urchin-Sunshine

1/4 yd

Cut four 4" x 8"
Cut four 1 1/2" x 5 1/4"



1952-3

Sea Urchin-Marine

1/8 yd

Cut two 3 1/4" x 4 1/4"
Cut two 1 1/2" x 5 1/4"



1949-1

Flotsam&Jetsam-Starfish

1/8 yd

Cut four 3 1/4" x 4 1/4"
Cut two 1 1/2" x 5 1/4"



1949-2

Flotsam&Jetsam-Sand Dollar

1/4 yd

Cut four 4" x 8"
Cut four 3 1/4" x 4 1/4"

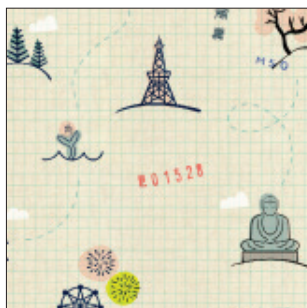


1949-3

Flotsam& Jetsam-Navy

3/4 yd

Cut four 4" x 8"
Cut two 3 1/4" x 4 1/4"
Remainder used for 2 1/4"
x WOF binding strips



1945-1

Sightseeing-Sand Dollar

1/8 yd

Cut four 3 1/4" x 4 1/4"

FABRIC REQUIREMENTS AND CUTTING



Cut two 3 1/4" x 4 1/4"



Cut two 4" x 8"

1946-1

Whales Don't Wear Shirts-Fog
1/8 yd

1947-1

Whale Dance-Salt Water
1/8 yd



Cut two 4" x 8"



Cut two 4" x 8"

1947-2

Whale Dance-Fog
1/8 yd

1947-3

Whale Dance-Blue Sea
1/8 yd



Cut two 3 1/4" x 4 1/4"

1950-2

Trajectory-Starfish
1/8 yd

OTHER SUPPLIES REQUIRED:

- Quilt batting
- Backing fabric 4 yds 1945-1 recommended
- All Purpose Thread
- Thirteen copies of templates provided printed at 100% no scaling

INTRODUCTION:

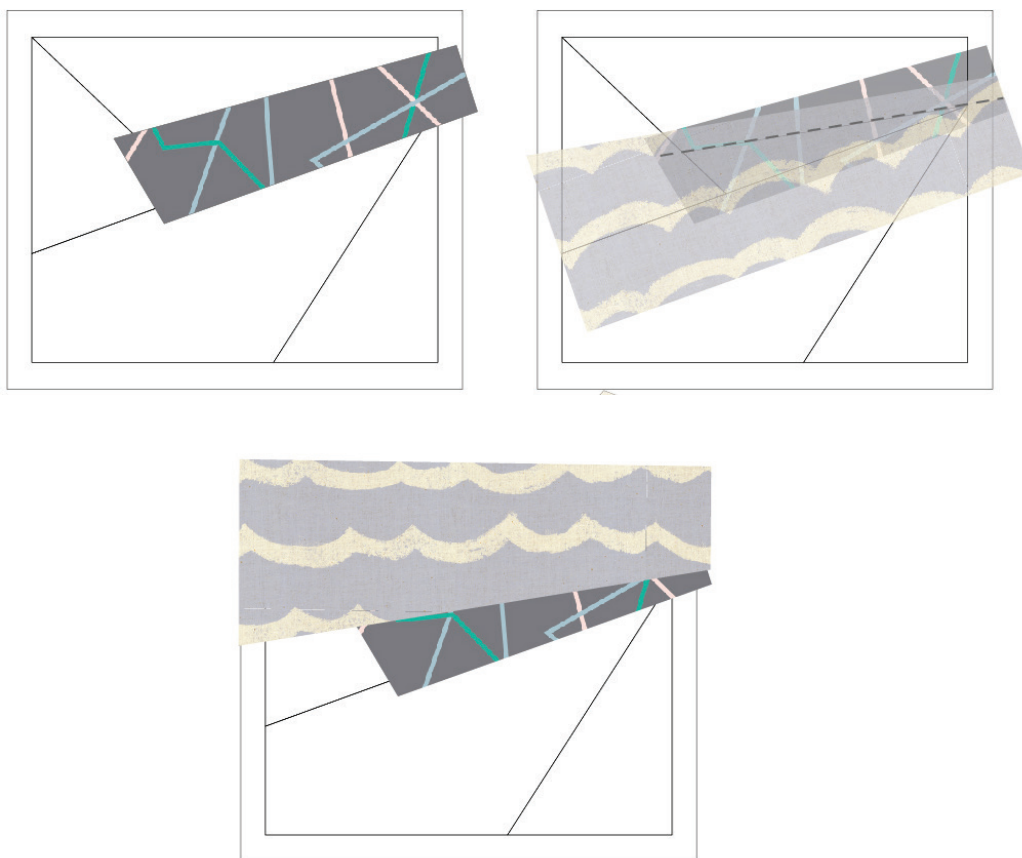
Read through all of the instructions before beginning your quilt. Knowledge of machine piecing, paper piecing, and quilting suggested. When printing the templates, be sure your templates printed at 100% by measuring the 1" box on the template page. Happy sewing!

INSTRUCTIONS:

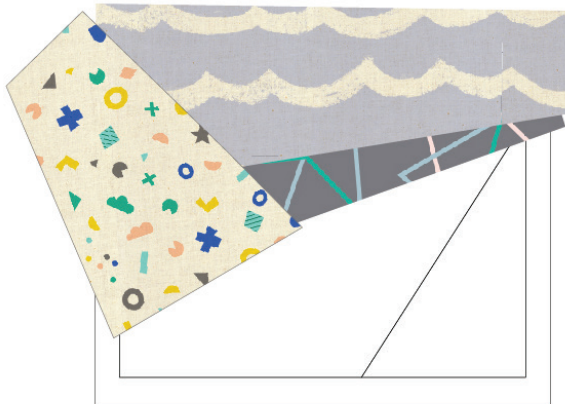
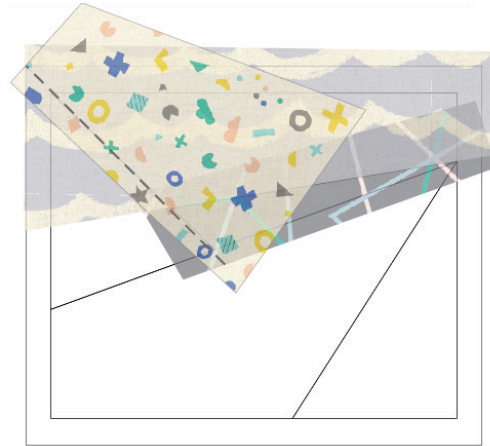
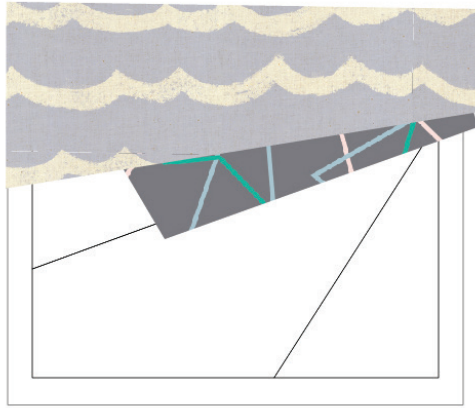
1/4" seam allowance

1. Paper piece each of the paper boat units required for the quilt. Refer to the main diagram to note each fabric placement for each paper boat unit. Take care when piecing the background sections to place your fabric in the right direction so that your waves go the right way. You may want to make a test block for practice.

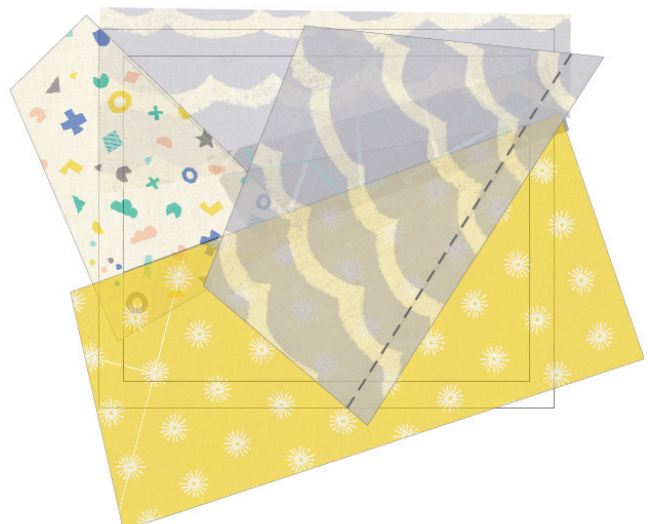
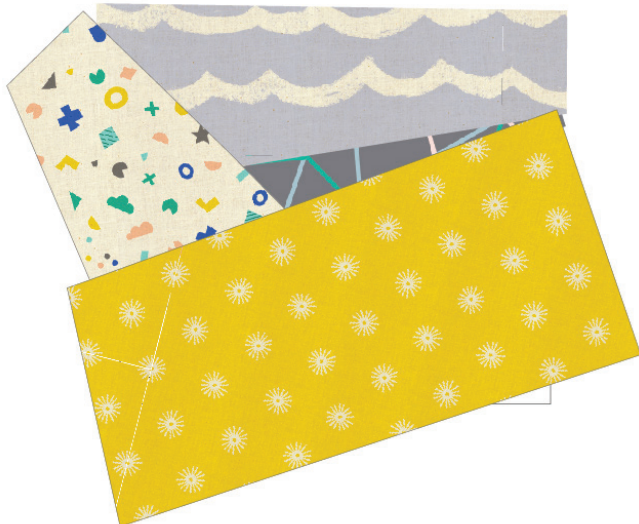
Begin with fabrics A and B, press.

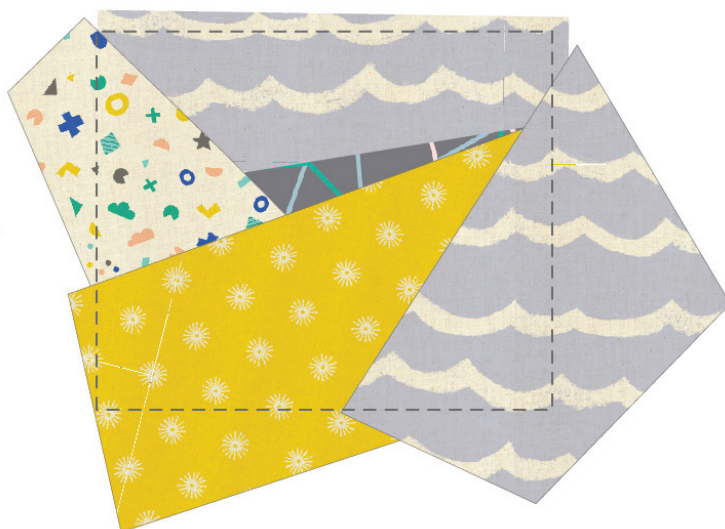


2. Continue piecing boat with fabrics C and D. Press.

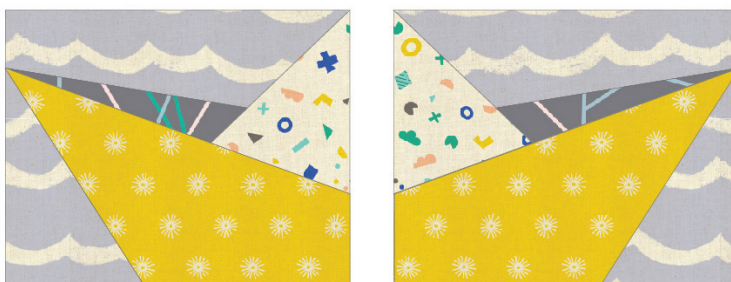


3. Continue piecing boat with final fabric E. Press and trim.

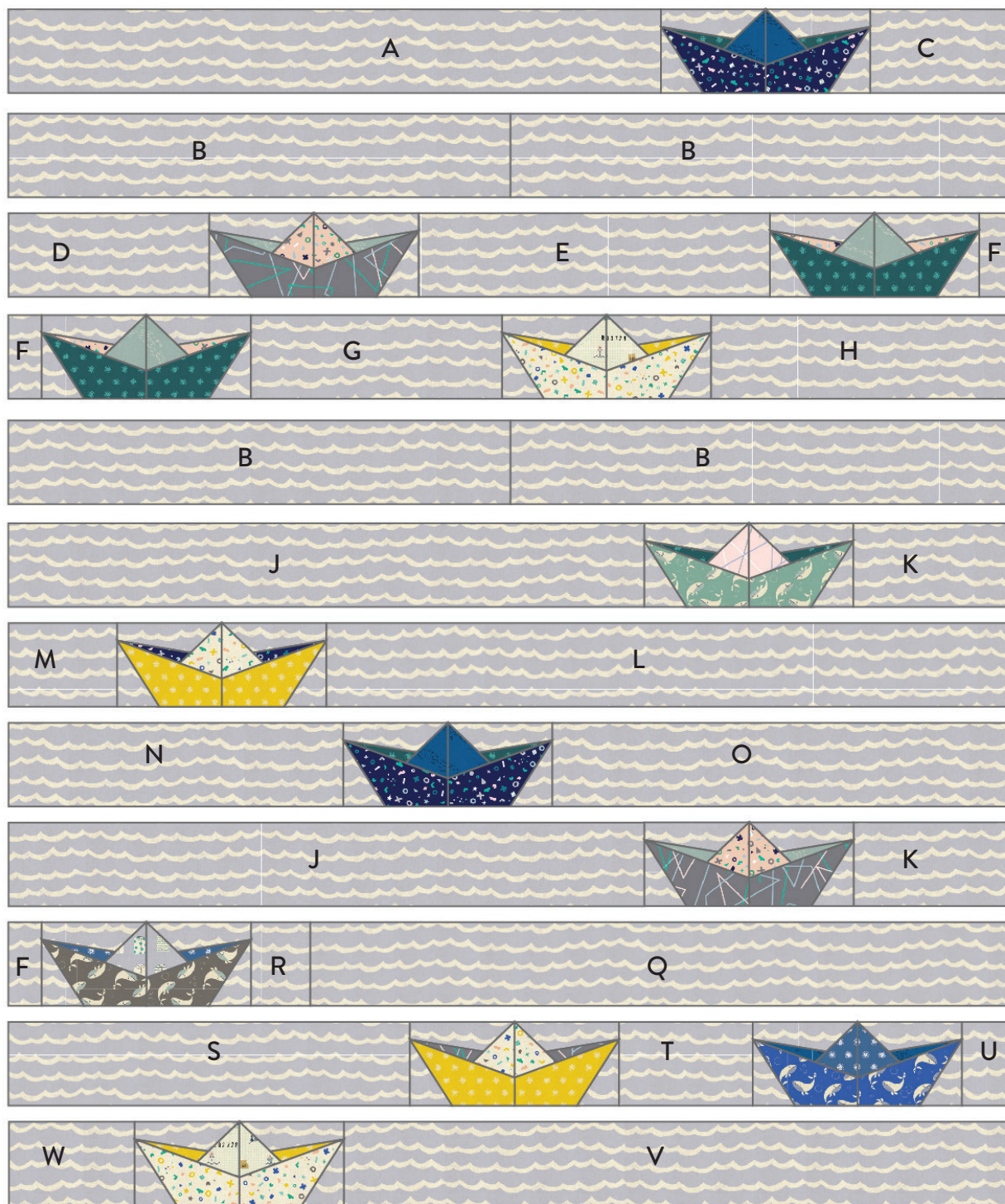




4. Repeat steps to piece the paper piecing template for the opposite side of the same paper boat unit.
5. Sew the two matching paper boat units together and press center seam open.



6. Repeat to complete all paper boat units.
7. Following the guide on the next page prepare your pieces by organizing them by row according to their cut size shown. This will keep your pieces organized as you sew the horizontal rows.



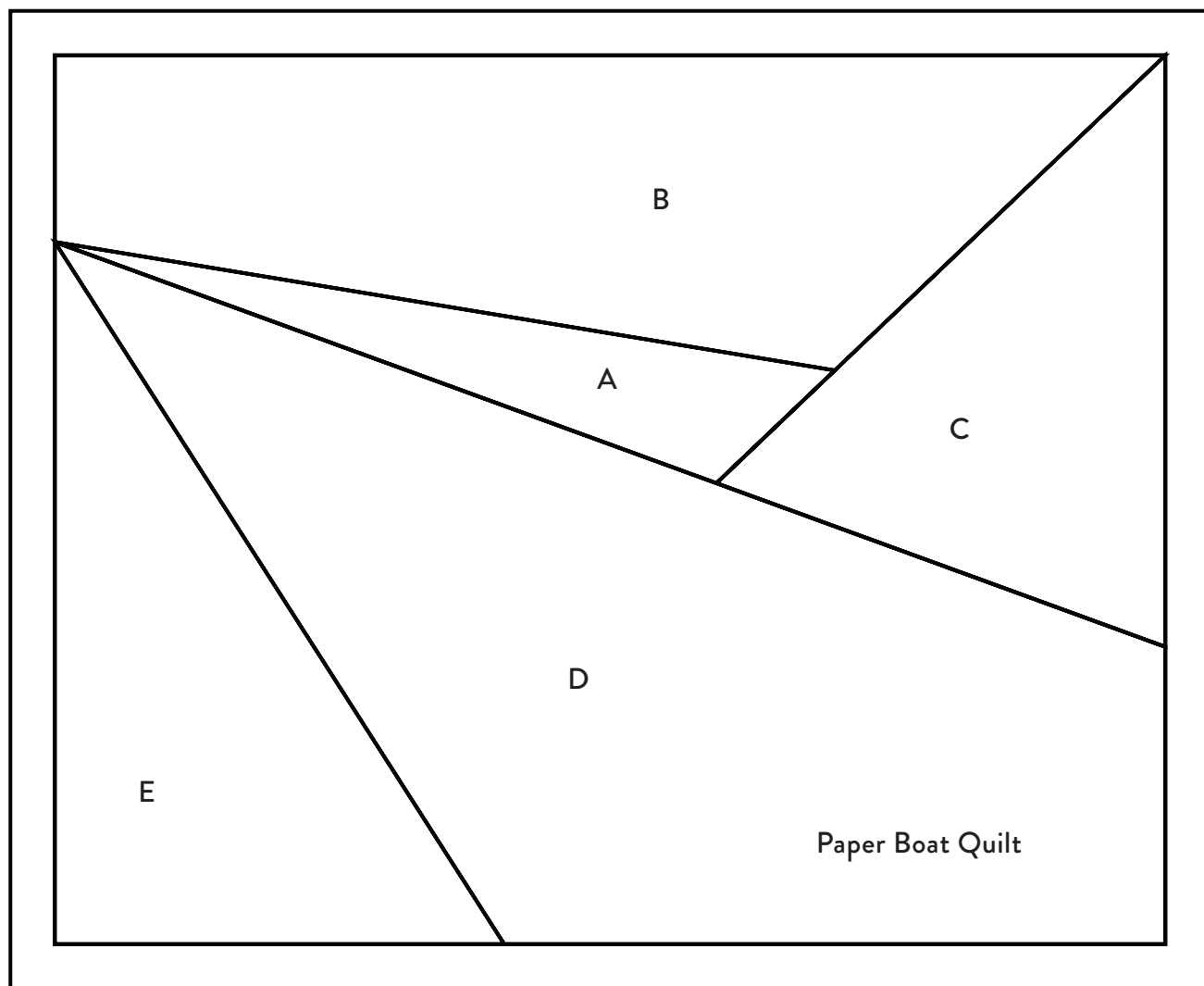
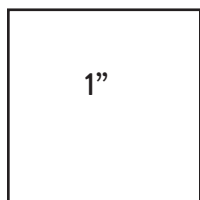
8. Now that the rows are organized, sew each row and press seams.
9. Sew the rows together to complete the quilt top. Remove papers and press seams.
10. Quilt and bind as desired.



PATTERN NO.

0015-02

COTTON+STEEL
A DIVISION OF RJR FABRICS



PATTERN NO.

0015-02

COTTON+STEEL
A DIVISION OF RJR FABRICS

