

Loving



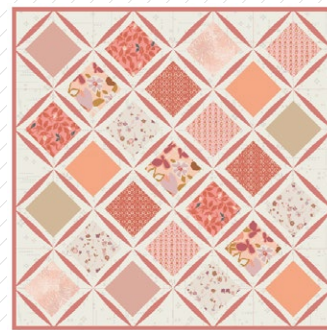
FREE PATTERN

XXXXXXXXXXXXXXXXXXXXXXXXXXXX

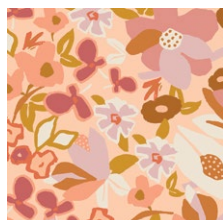


Loving

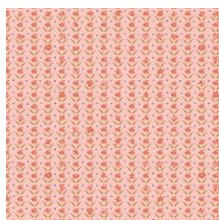
QUILT DESIGNED BY AGF STUDIO



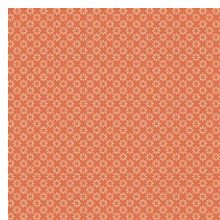
VLV-49657
WOODCUT SUNSET



CAP-TK-1500
DESERT FLORA



VLV-49651
SWEET DARLING



HMB-34956
MAKE & MEND SHINE

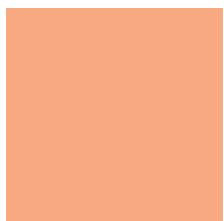


LLP-56705
BUDDING ARTIST

ADDITIONAL BLENDERS FOR THIS PROJECT



PE-488
BLOSSOMED



PE-426
APRICOT CREPE



PE-486
VANILLA CUSTARD



PE-489
MIAMI SUNSET



FE-518
BALLERINA



DSE-700
CLOUD



FEEL THE DIFFERENCE © 2021 Courtesy of Art Gallery Quilts LLC. All Rights Reserved.



FINISHED SIZE | 32" x 32"

FABRIC REQUIREMENTS

Fabric A	VLV-49657	F8.
Fabric B	CAP-TK-1500	F8.
Fabric C	VLV-49651	F8.
Fabric D	HMB-34956	F8.
Fabric E	LLP-56705	F8.
Fabric F	PE-488	F8.
Fabric G	PE-426	F8.
Fabric H	PE-486	F8.
Fabric I	PE-489	1½ yd.
Fabric J	FE-518	F8.
Fabric K	DSE-700	1½ yd.

BACKING FABRIC

DSE-700- 1½ yds. *(Suggested)*

BINDING FABRIC

PE-489 (Fabric **I**) *(included)*

CUTTING DIRECTIONS

- Three (3) 4" squares from fabric **A**.
- Three (3) 4" squares from fabric **B**.
- Three (3) 4" squares from fabric **C**.
- Three (3) 4" squares from fabric **D**.
- Four (4) 4" squares from fabric **E**.
- Two (2) 4" squares from fabric **F**.
- Three (3) 4" squares from fabric **G**.
- Two (2) 4" squares from fabric **H**.
- Sixty four (64) 4" squares from fabric **I**.
- Two (2) 4" squares from fabric **J**.
- Hundred and twenty eight (128) 4" squares from fabric **K**.

CONSTRUCTION

- Take all the squares from fabric **K** and fold them on the diagonal.

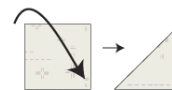


DIAGRAM 1

- Rows 1, 3, 5 and 7:

- Take thirty two (32) squares from fabric **I** and align eight (8) blocks following the diagram below.

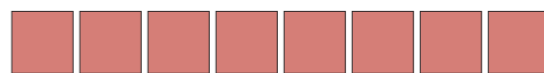


DIAGRAM 2

- Take eight (8) folded squares from fabric **K** for row 1, and place them on top of the aligned squares following the fabric placement direction as in the diagram below.



DIAGRAM 3

- Now, take eight (8) folded squares from fabric **K** and place them on top of the aligned squares, on the opposite sides following the diagram below.



DIAGRAM 4

- Pin and join each square creating row 1.



Row 1



DIAGRAM 5

- Repeat the same instruction with the same direction in order to create rows 3, 5 and 7

- Rows 2, 4, 6 and 8:

- Take thirty two (32) squares from fabric **I** and align eight (8) blocks following the diagram below.



DIAGRAM 6

- Take eight (8) folded squares from fabric **K** for row 2, and place them on top of the aligned squares following the fabric placement direction as in the diagram below.



DIAGRAM 7

- Now, take eight (8) folded squares from fabric **K** and place them on top of the aligned squares, on the opposite sides following the diagram below.



DIAGRAM 8

- Pin and join each square creating row 2.

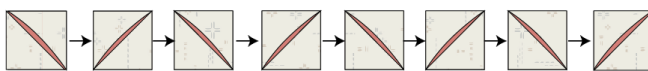


DIAGRAM 9

- Repeat the same direction in order to create rows 4, 6 and 8.

- Now, take row 1-8 and sew them together.

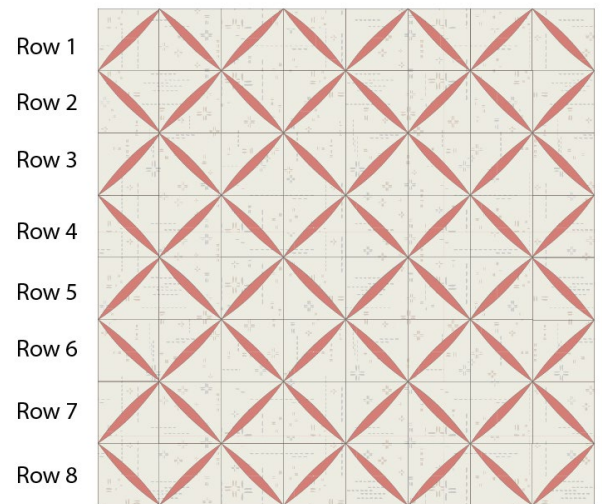


DIAGRAM 10

- Place batting and backing fabric underneath the top piece.

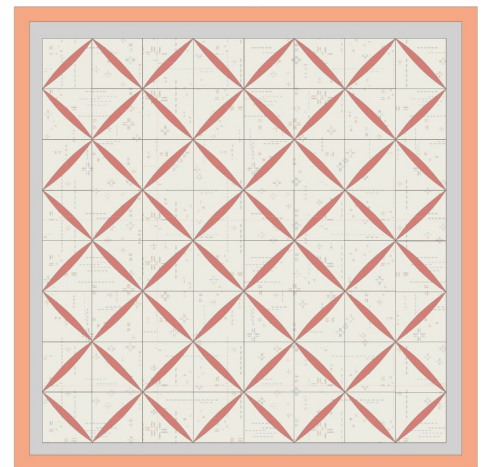


DIAGRAM 11

- Now, take fabrics **A, B, C, D, E, F, G, H** and **J** and place them centered following the diagram below.
- Pin your pieces so they don't shift when sewing.

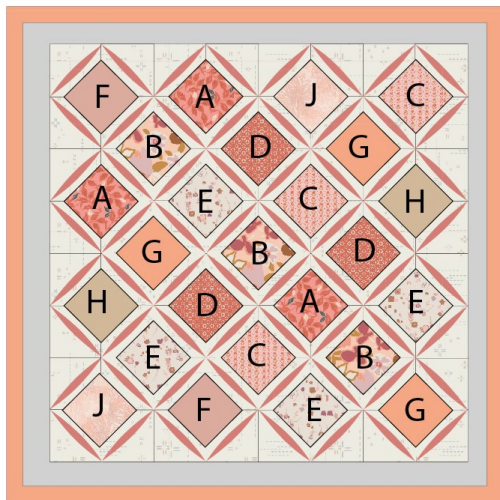


DIAGRAM 12

- Take the folded edge from fabric K, and with your fingers pull it towards its point and over the fabric on top.
- Edge-stitch along the new curved edge. You will be stitching all three layers.
- Repeat this step in every single folded edge from fabric K to finish your quilt top.

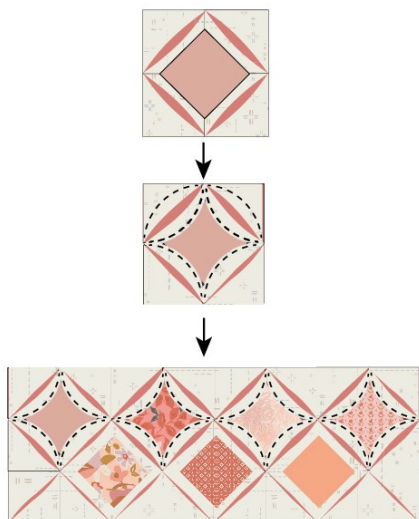
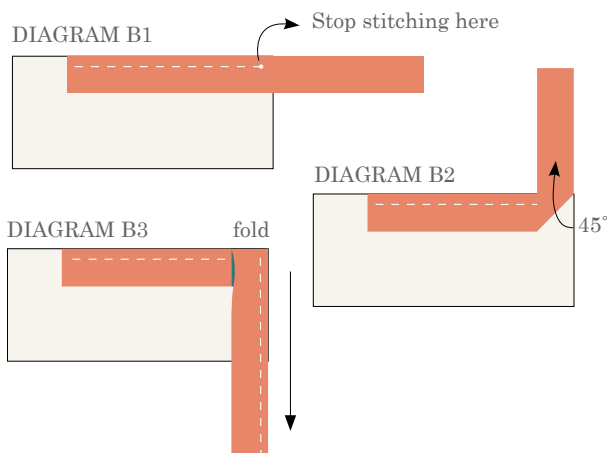


DIAGRAM 13

BINDING

Sew rights sides together.

- Cut enough strips $1\frac{1}{2}$ " wide by the width of the fabric **J** to make a final strip 138" long. Start sewing the binding strip in the middle of one of the sides of the quilt, placing the strip right side down and leaving an approximated 5" tail. Sew with $\frac{1}{4}$ " seam allowance (using straight stitch), aligning the strip's raw edge with the quilt top's raw edge.
- Stop stitching $\frac{1}{4}$ " before the edge of the quilt (DIAGRAM B 1). Clip the threads. Remove the quilt from under the machine presser foot. Fold the strip in a motion of 45° and upward, pressing with your fingers (DIAGRAM B 2). Hold this fold with your finger, bring the strip down in line with the next edge, making a horizontal fold that aligns with the top edge of the quilt (DIAGRAM B 3). Start sewing at $\frac{1}{4}$ " of the border, stitching all the layers. Do the same in the four corners of the quilt.
- Stop stitching before you reach the last 5 or 6 inches. Cut the threads and remove the quilt from under the machine presser foot. Lay the loose ends of the binding flat along the quilt edge, folding the ends back on themselves where they meet. Press them together to form a crease. Using this crease as the stitching line, sew the two open ends of the binding with right sides together (you can help yourself marking with a pencil if the crease is difficult to see).
- Trim seam to $\frac{1}{4}$ " and press open. Complete the sewing. Turn binding to back of the quilt, turn raw edge inside and stitch by hand using blind stitch.



XXXXXXXXXXXXXXXXXXXXXXXXXXXXXXXXXXXX

*Congratulations
& enjoy*

XXXXXXXXXXXXXXXXXXXXXXXXXXXXXXXXXXXX



artgalleryfabrics.com

NOTE: While all possible care has been taken to ensure the accuracy of this pattern, We are not responsible for printing errors or the way in which individual work varies.

Please read instructions carefully before starting the construction of this quilt. If desired, wash and iron your fabrics before starting to cut.