



Finished Size: 48 1/2" x 48 1/2"

LAP QUILT

FABRIC REQUIREMENTS

- One Jelly Roll or 32 - 2 1/2" x width of fabric strips (Fabric A)
Shop Jelly Rolls at:
www.fatquartershop.com/jelly-rolls
- 2/3 yard background
- 5/8 yard binding
- 3 1/4 yards backing

CUTTING

- Cut background fabric into:
32 - 4 1/2" squares (Fabric B)
- Cut binding fabric into:
6 - 2 1/2" x width of fabric strips (Fabric C)

Jelly Roll Sizzle

Quilt Pattern

Fat Quarter Shop Exclusive

Use 1/4" seams and press as arrows indicate throughout.

BLOCK ASSEMBLY:

Assemble two different Fabric A strips.

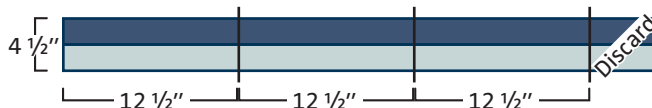
Jelly Strip Set should measure 4 1/2" x 42".



Make sixteen.

Subcut each Jelly Strip Set into three 4 1/2" x 12 1/2" rectangles.

Jelly Unit should measure 4 1/2" x 12 1/2".



Make forty-eight.

Draw a line on the wrong side of the Fabric B squares.

With right sides facing, layer a Fabric B square on the left end of a Jelly Unit.

Stitch on the drawn line and trim 1/4" away from the seam.

Sizzle Unit should measure 4 1/2" x 12 1/2".



Make thirty-two.

The remaining Jelly Units will be used in the Jelly Roll Sizzle Blocks.

Ready. Set. Sew!

#JELLYROLLSIZZLEQUILT

www.FatQuarterShop.com



Check out the Tutorial on [YouTube](https://www.youtube.com/watch?v=...)

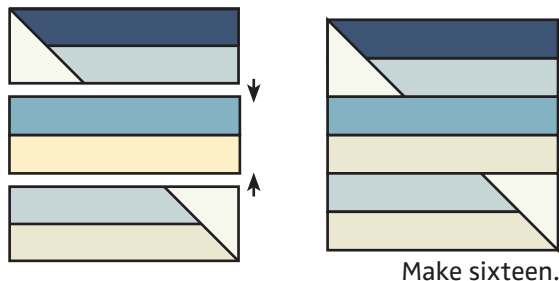


Jelly Roll Sizzle

Quilt Pattern
Fat Quarter Shop Exclusive

Assemble Block. Pay close attention to unit placement.

Jelly Roll Sizzle Block should measure 12 1/2" x 12 1/2".



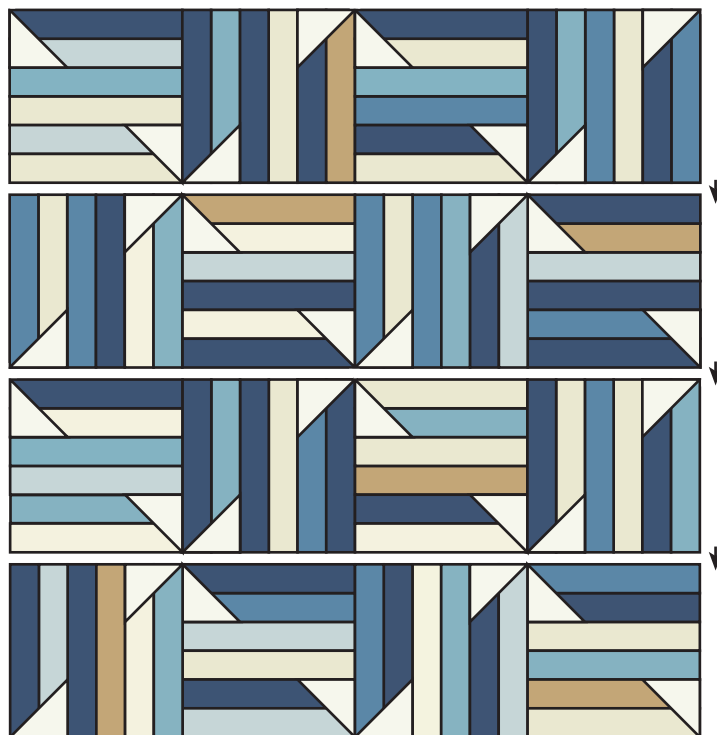
Make sixteen.

QUILT CENTER:

Assemble Quilt Center. Pay close attention to block placement.

Press rows in opposite directions.

Quilt Center should measure 48 1/2" x 48 1/2".



FINISHING:

Piece the Fabric C strips end to end.

Quilt and bind as desired.



Jelly Roll Sizzle

Quilt Pattern
Fat Quarter Shop Exclusive

EXTRA QUILT SIZES

To make the quilt in different sizes, follow the Cutting and Quilt Assembly Instructions here and refer back to page 1 for the Block Assembly.

CRIB QUILT

Finished Size: 36 1/2" x 36 1/2"

FABRIC REQUIREMENTS

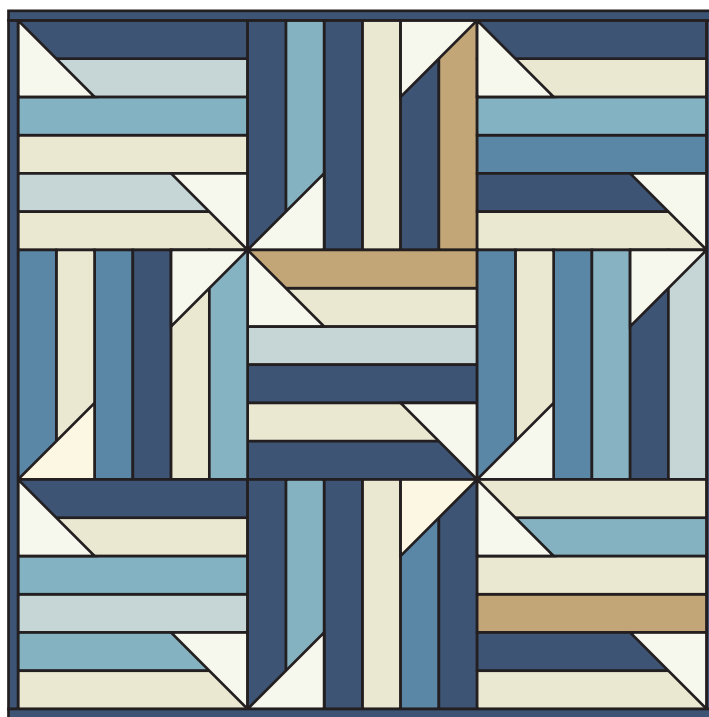
- One Jelly Roll or 18 - 2 1/2" x width of fabric strips (Fabric A)
Shop Jelly Rolls at:
www.fatquartershop.com/jelly-rolls
- 5/8 yard background
- 1/2 yard binding
- 2 5/8 yards backing

CUTTING

- Cut background fabric into:
18 - 4 1/2" squares (Fabric B)
- Cut binding fabric into:
5 - 2 1/2" x width of fabric strips (Fabric C)

QUILT ASSEMBLY:

Make nine Jelly Roll Sizzle Blocks.



FINISHING:

Piece the Fabric C strips end to end.
Quilt and bind as desired.



Jelly Roll Sizzle

Quilt Pattern
Fat Quarter Shop Exclusive

TWIN QUILT

Finished Size: 60 1/2" x 84 1/2"

FABRIC REQUIREMENTS

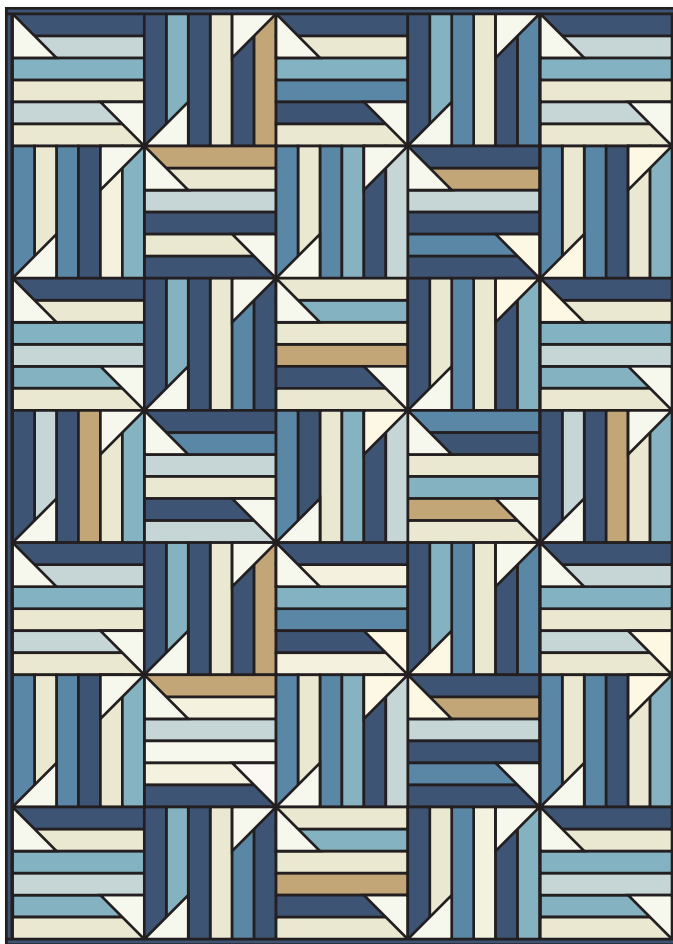
- Two Jelly Rolls or 70 - 2 1/2" x width of fabric strips (Fabric A)
Shop Jelly Rolls at:
www.fatquartershop.com/jelly-rolls
- 1 1/3 yards background
- 3/4 yard binding
- 5 1/4 yards backing

CUTTING

- Cut background fabric into:
70 - 4 1/2" squares (Fabric B)
- Cut binding fabric into:
8 - 2 1/2" x width of fabric strips (Fabric C)

QUILT ASSEMBLY:

Make thirty-five Jelly Roll Sizzle Blocks.



FINISHING:

Piece the Fabric C strips end to end.
Quilt and bind as desired.



Jelly Roll Sizzle

Quilt Pattern
Fat Quarter Shop Exclusive

QUEEN QUILT

Finished Size: 96 1/2" x 96 1/2"

FABRIC REQUIREMENTS

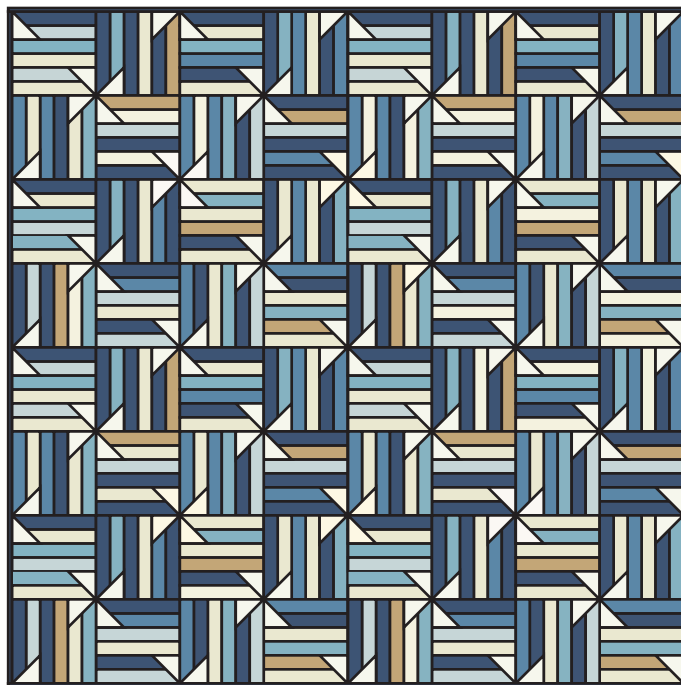
- Four Jelly Rolls or 128 - 2 1/2" x width of fabric strips (Fabric A)
Shop Jelly Rolls at:
www.fatquartershop.com/jelly-rolls
- 2 1/4 yards background
- 1 yard binding
- 8 7/8 yards backing

CUTTING

- Cut background fabric into:
128 - 4 1/2" squares (Fabric B)
- Cut binding fabric into:
11 - 2 1/2" x width of fabric strips (Fabric C)

QUILT ASSEMBLY:

Make sixty-four Jelly Roll Sizzle Blocks.



FINISHING:

Piece the Fabric C strips end to end.
Quilt and bind as desired.