

MYSTERY *Boo Crew* STITCH ALONG

FAT QUARTER SHOP EXCLUSIVE

COMPLETE SET



Cross Stitch Information

Stitch Count	200w x 70h
Finished Size	14.375" x 5"
Cloth	Peaceful Purple 14 Count Aida by Wichelt Imports (SKU# 357-322A)
Thread	2 strands

Model Finishing

Model was stitched using Classic Colorworks thread.

Finished it using Pumpkin Large Vintage Trim by Lori Holt of Bee in my Bonnet (SKU# STVT-14768) on the White Beveled Beaded Wood Wall Decor (SKU# 1933886) from Hobby Lobby.

Additional Supplies Available

- Boo Crew DMC Thread Pack
- Boo Crew Classic Colorworks Thread Pack
- Pumpkin Enamel Needle Minder
- Ghostly Enamel Keychain Charm
- Charcoal Mad for Plaid Project Bag

Thread

Color	Symbols	DMC	Skeins	Classic Colorworks	Skeins
Purple	◆	33	1	Mulled Berries	2
Orange	✕	922	1	Colonial Copper	1
Yellow	═	676	1	Queen Bee	1
White	○	3865	1	Bamboo	2
Light Gray	T	3895	1	Thundercloud	1
Dark Gray	#	535	1	Baking Tin	1
Black	★	310	1	Black Coffee	2

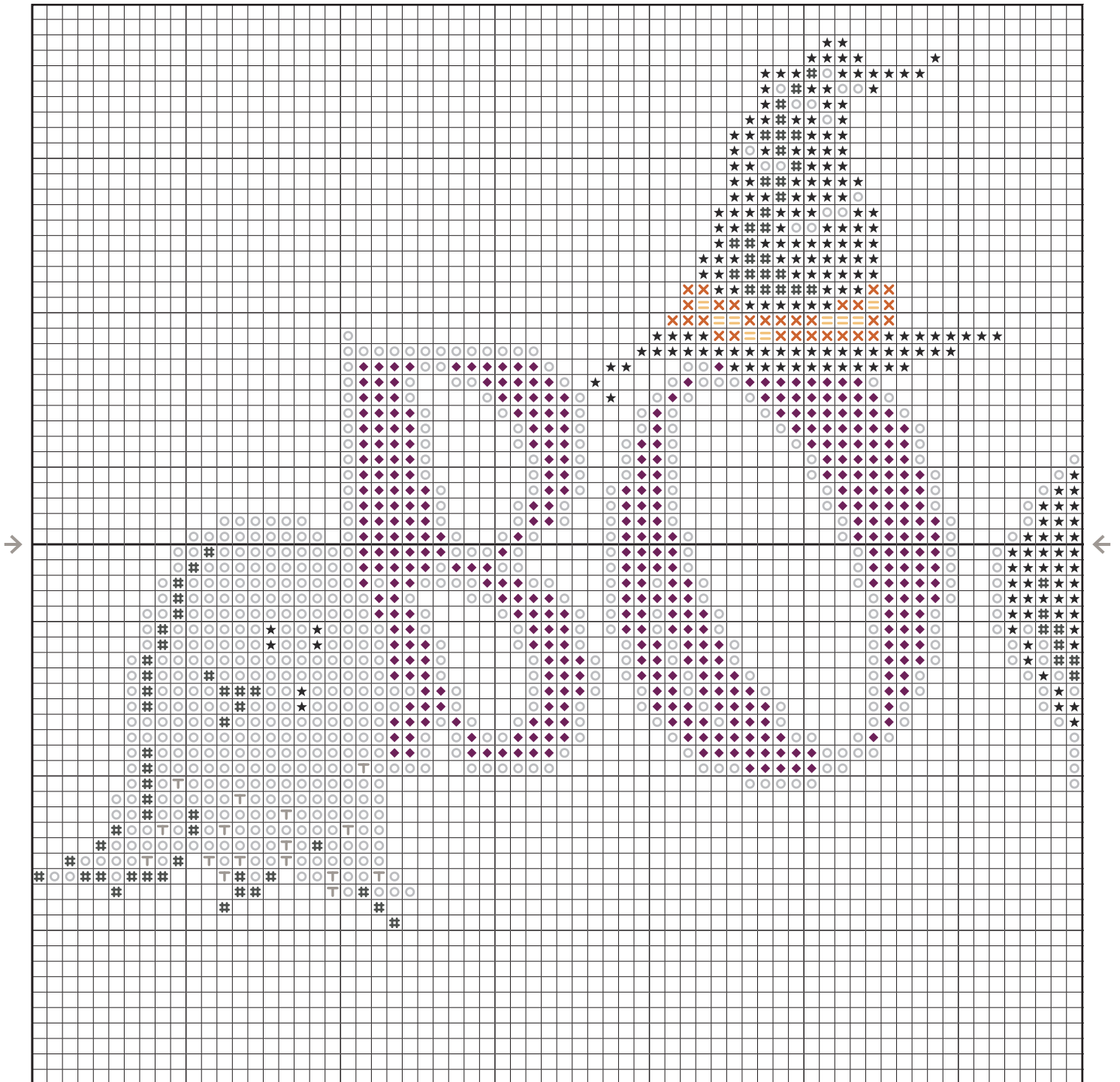


1-866-826-2069 · www.FatQuarterShop.com

#BooCrewSAL

MYSTERY BooCrew STITCH ALONG

FAT QUARTER SHOP EXCLUSIVE

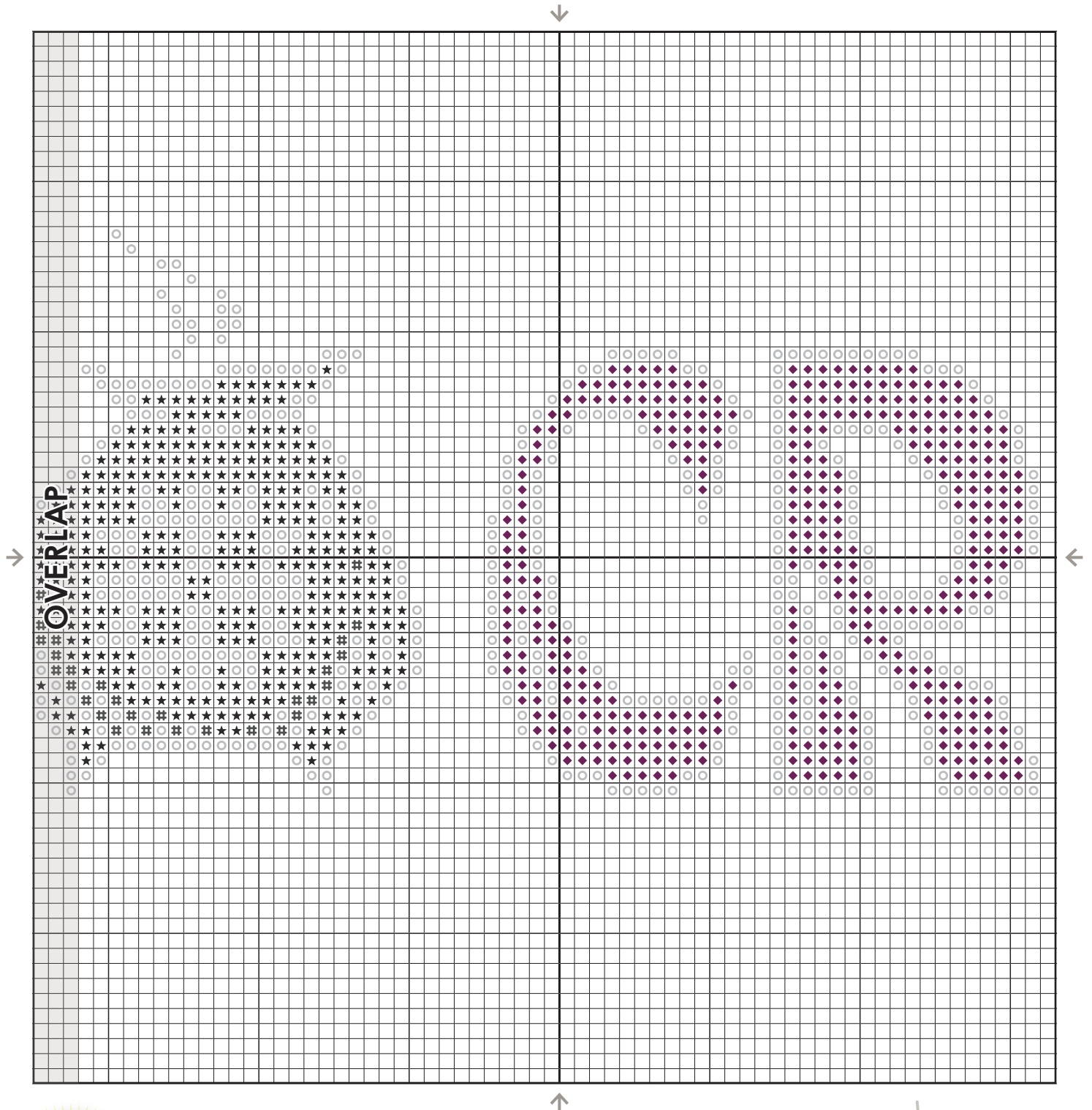


1-866-826-2069 · www.FatQuarterShop.com

#BooCrewSAL

MYSTERY *Boo Crew* STITCH ALONG

FAT QUARTER SHOP EXCLUSIVE

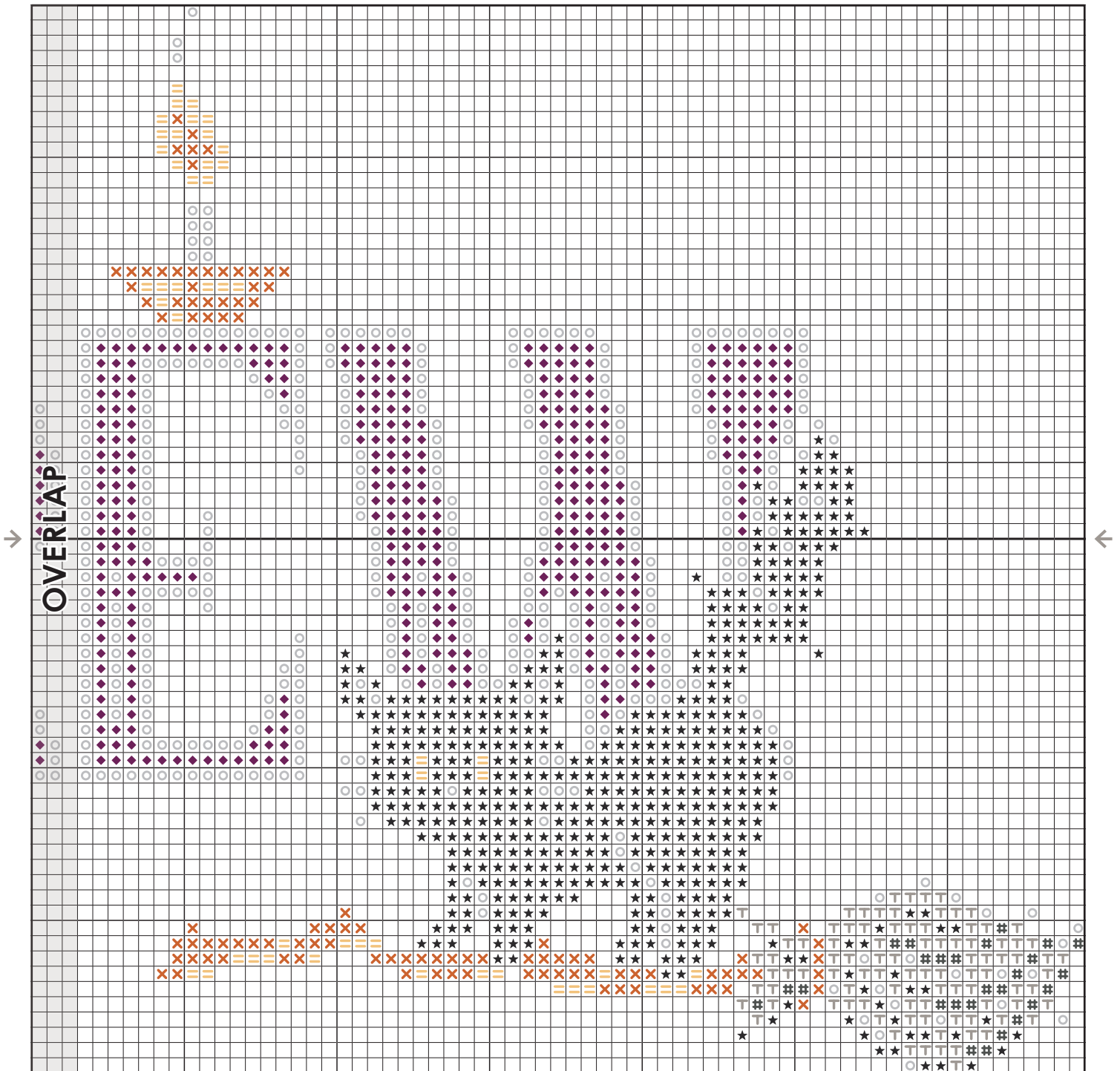


1-866-826-2069 · www.FatQuarterShop.com

#BooCrewSAL

MYSTERY Boo Crew STITCH ALONG

FAT QUARTER SHOP EXCLUSIVE



1-866-826-2069 · www.FatQuarterShop.com

#BooCrewSAL