

Christmastime

Mystery Stitch Along



Cross Stitch Information

Stitch Count	105w x 95h
Finished Size	7.5" x 6.875"
Cloth	Natural 14 Count Aida by Wichelt Imports (SKU# 357-50A)
Thread	2 strands

Model Finishing

Model was stitched using Classic Colorworks thread.

Priscilla Blain of The Real Housewives of Cross Stitch (Priscillas2000.blogspot.com) finished it using Stitching Housewives Stripes Red and White fabric (SKU# 9826-88) on the Rustic Wood Tray Set (SKU# 1334184) from Hobby Lobby.

Additional Supplies Available

- Charcoal Mad for Plaid Project Bag
- Berry Mad for Plaid Project Bag
- Olive Mad for Plaid Project Bag
- All the Trimmings Enamel Needle Minder

Thread

Color	Symbols	DMC	Skeins	Classic Colorworks	Skeins
Dark Red	★	816	1	Ribbon Red	1
Light Red	#	347	1	Ladybug	1
Dark Green	T	987	1	Steamed Broccoli	1
Light Green	X	989	1	Little Sprout	1
Dark Brown	◆	839	1	Cocoa Bean	1
Light Brown	=	840	1	Pebble Beach	1
White	○	3865	1	Bamboo	1



1-866-826-2069 · www.FatQuarterShop.com

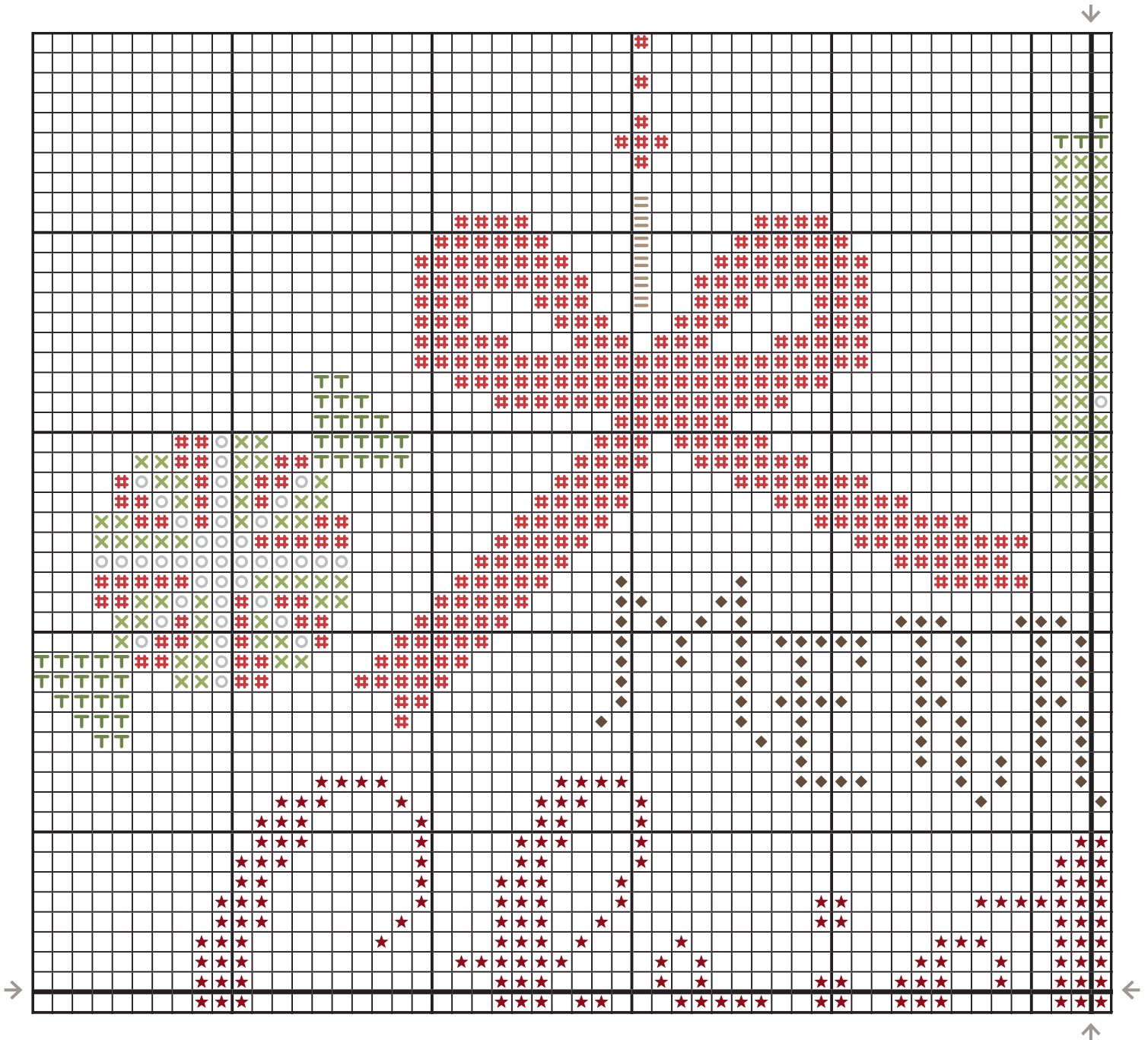
#ChristmastimeSAL

Subscribe to our Fat Quarter Shop FlossTube on 

www.youtube.com/FatQuarterShopFlossTube

Christmastime

Mystery Stitch Along

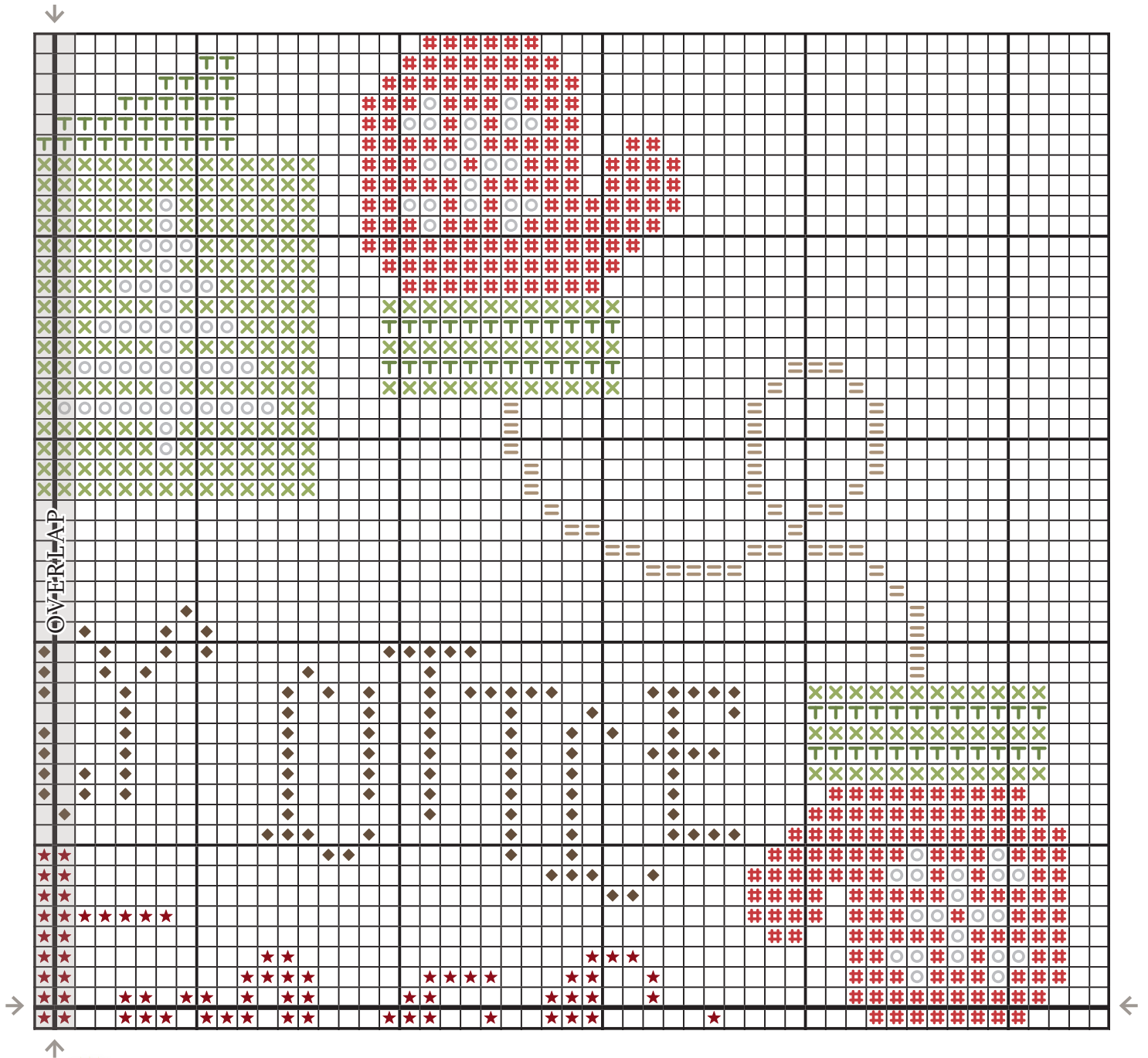


Subscribe to our Fat Quarter Shop FlossTube on [YouTube](#)

www.youtube.com/FatQuarterShopFlossTube

Christmastime

Mystery Stitch Along

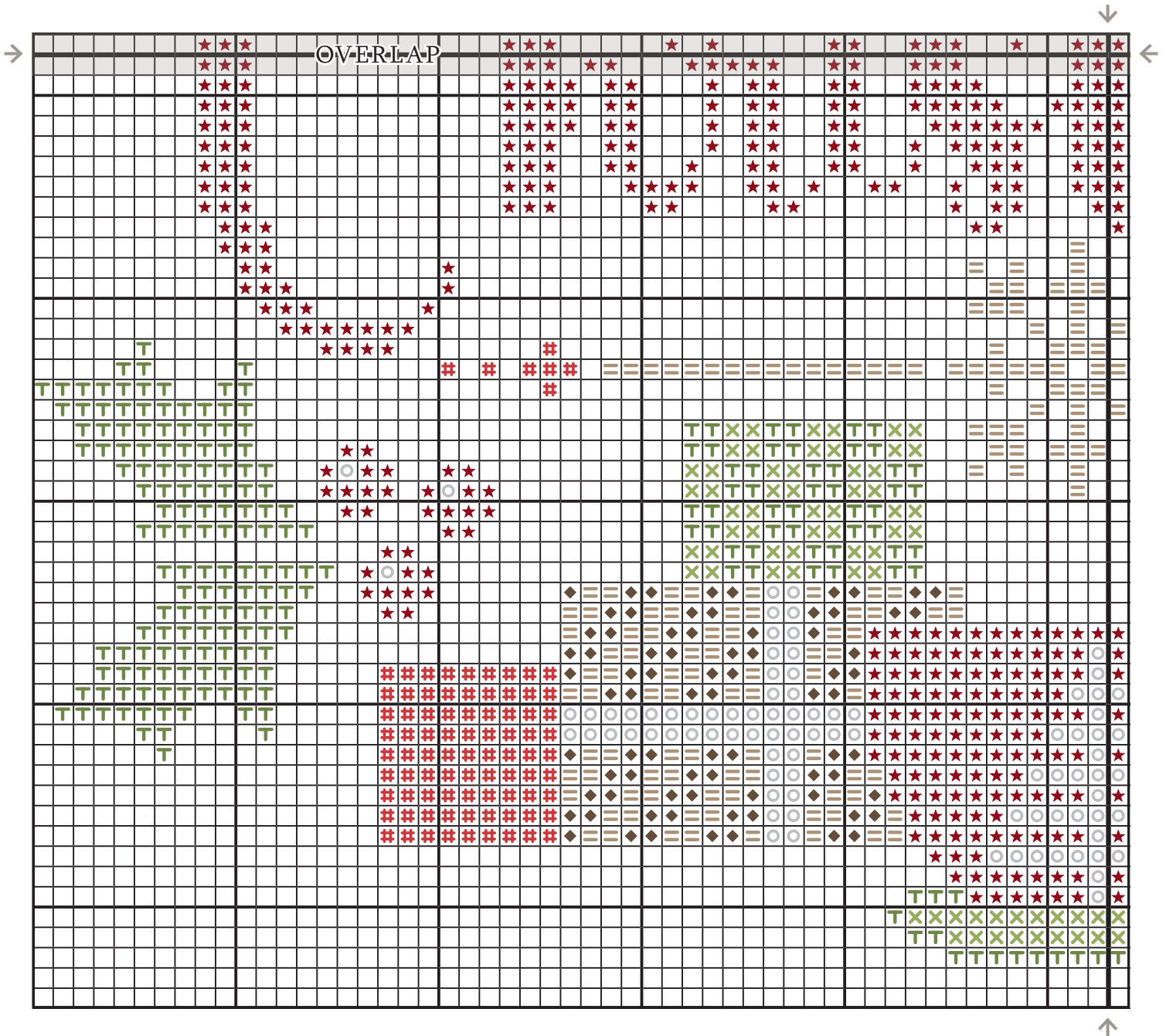


Subscribe to our Fat Quarter Shop FlossTube on [YouTube](#)

www.youtube.com/FatQuarterShopFlossTube

Christmastime

Mystery Stitch Along

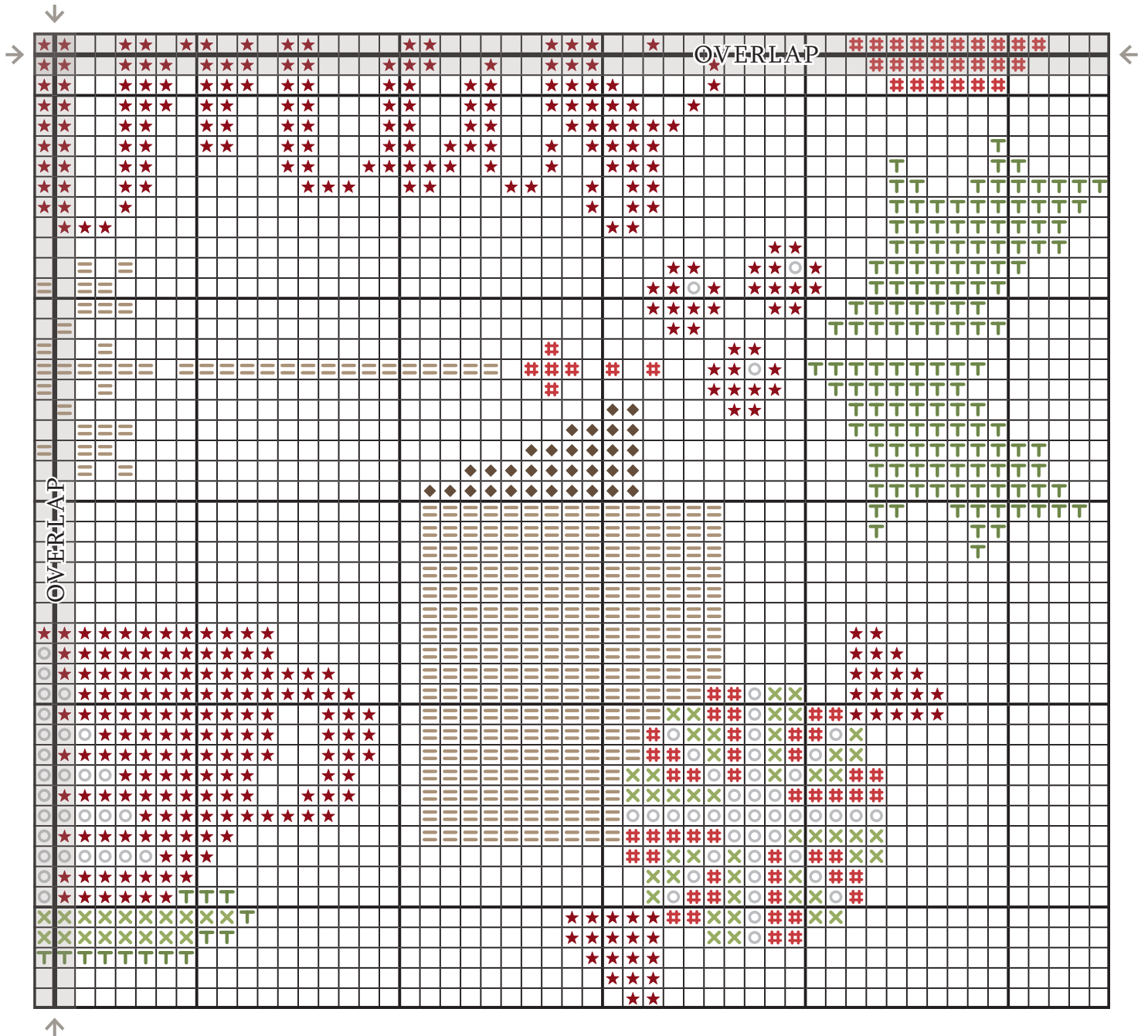


Subscribe to our Fat Quarter Shop FlossTube on [YouTube](#)

www.youtube.com/FatQuarterShopFlossTube

Christmastime

Mystery Stitch Along

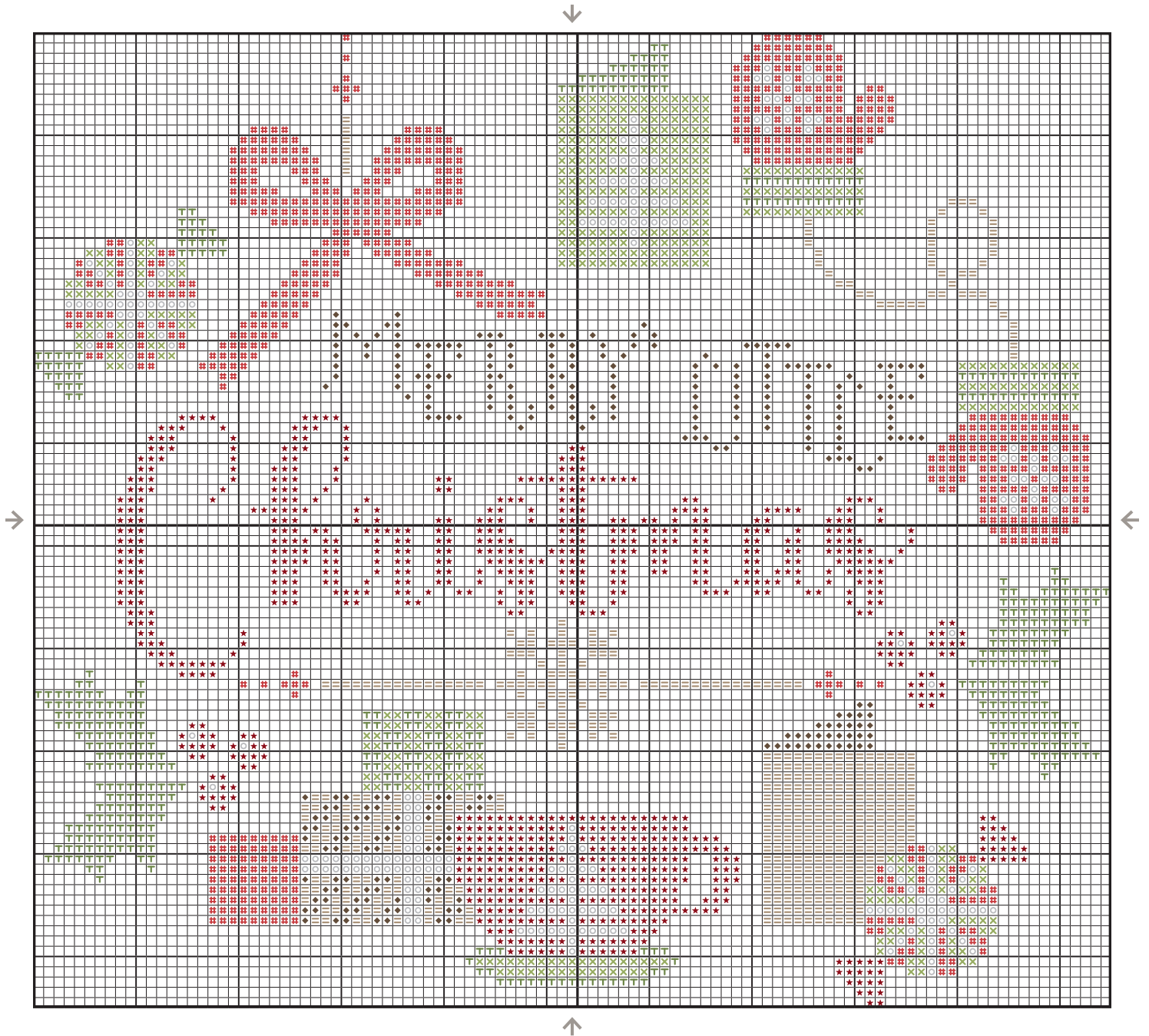


Subscribe to our Fat Quarter Shop FlossTube on [YouTube](#)

www.youtube.com/FatQuarterShopFlossTube

Christmastime

Mystery Stitch Along



Subscribe to our Fat Quarter Shop FlossTube on **YouTube**

www.youtube.com/FatQuarterShopFlossTube