

SCULPTURE


Riley Blake
DESIGNS



The Artist's Home Collection

LIBERTY

FABRICS

SCULPTURE

FINISHED QUILT SIZE 45" x 45"

Finished Block Size 8" x 8"

Measurements include $\frac{1}{4}$ " seam allowance.

Sew with right sides together unless otherwise stated.

Please check our website www.rileyblakedesigns.com for any revisions before starting this project.

FABRIC REQUIREMENTS

1 Yard Sallieann C (04776005C)

$\frac{1}{4}$ Yard Melou Meadow C (04776010C)

$\frac{1}{8}$ Yard Niki Wildflower C (04776002C)

$\frac{1}{8}$ Yard Trailing Marigold C (04776009C)

$\frac{7}{8}$ Yard Juneberry C* (04776008C)

$\frac{1}{4}$ Yard Mary Kathryn C (04776012C)

$\frac{1}{4}$ Yard Sussex Sprig B (04776001B)

$\frac{3}{8}$ Yard Yolande Blossom D (04776011D)

$\frac{1}{4}$ Yard Spotty Dotty C (04776016C)

$\frac{1}{4}$ Yard Yolande Blossom C (04776011C)

$\frac{3}{8}$ Yard Riley White Solid (C120)

*Includes Binding

CUTTING REQUIREMENTS

Please read instructions first before cutting. Seam allowances vary so measure through the center of the quilt before cutting border pieces.

Four-Patch Blocks

Cut 4 strips $2\frac{1}{2}$ " x WOF from White Wiltshire Blender

Cut 1 strip $2\frac{1}{2}$ " x WOF from Niki Wildflower C

Cut 1 strip $2\frac{1}{2}$ " x WOF from Trailing Marigold C

Cut 2 strips $2\frac{1}{2}$ " x WOF from Yolande Blossom C

Half Square Triangles

Cut 16 squares 5" x 5" from Yolande Blossom D

Cut 6 squares 5" x 5" from Melou Meadow C

Cut 2 squares 5" x 5" from Mary Kathryn C

Cut 4 squares 5" x 5" from Sussex Sprig B

Cut 4 squares 5" x 5" from Spotty Dotty C

Border 1

Cut 4 strips 2" x WOF from Juneberry C

Border 2

Cut 5 strips $5\frac{1}{2}$ " x WOF from Sallieann C

Binding

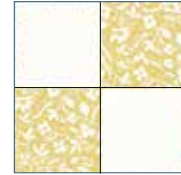
Cut 6 strips $2\frac{1}{2}$ " x WOF from Juneberry C

QUILT ASSEMBLY

Refer to quilt photo for placement of fabrics.

Four-Patch Blocks

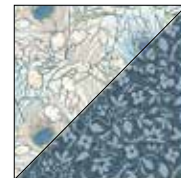
Sew a $2\frac{1}{2}$ " white strip to a $2\frac{1}{2}$ " Niki Wildflower C strip. Cut the strip into $2\frac{1}{2}$ " segments. Repeat with the remaining $2\frac{1}{2}$ " white strips and $2\frac{1}{2}$ " Trailing Marigold C and Yolande Blossom C strips. Sew the segments together to create 32 Four-Patch Blocks (8 Niki Wildflower C, 8 Trailing Marigold, and 16 Yolande Blossom C).



Four-Patch Block

Half Square Triangles

Draw a line from corner to corner on the wrong side of the 5" Yolande Blossom D squares. Place a 5" Yolande Blossom D square on top of a 5" assorted print square. Sew $\frac{1}{4}$ " on either side of the drawn line. Cut on line to make 2 Half Square Triangles. Press. Trim the Half Square Triangles to $4\frac{1}{2}$ " square. Repeat with the remaining 5" Yolande Blossom D and 5" assorted print squares to make a total of 32 Half Square Triangles (12 Melou Meadow C, 4 Mary Kathryn C, 8 Sussex Sprig B, and 8 Spotty Dotty C).



Half Square Triangle

Quilt Center Assembly

Refer to quilt photo for Four-Patch Block and Half Square Triangle placement. Lay out blocks in 8 rows of 8. Sew blocks together to make rows. Sew rows together to complete the center of the quilt.

Borders

Seam allowances vary so measure through the center of the quilt before cutting border pieces. Sew side borders first.

Border 1

Side borders should be $3\frac{1}{2}$ ". Top and bottom borders should be $3\frac{1}{2}$ ".

Border 2

Side borders should be $3\frac{1}{2}$ ". Top and bottom borders should be $4\frac{1}{2}$ ".

Finish quilt by layering the quilt top, batting, and back. Bind with Juneberry C from the Sculpture Collection by Liberty Fabrics. Have fun with your colors and enjoy the journey of making your quilt.