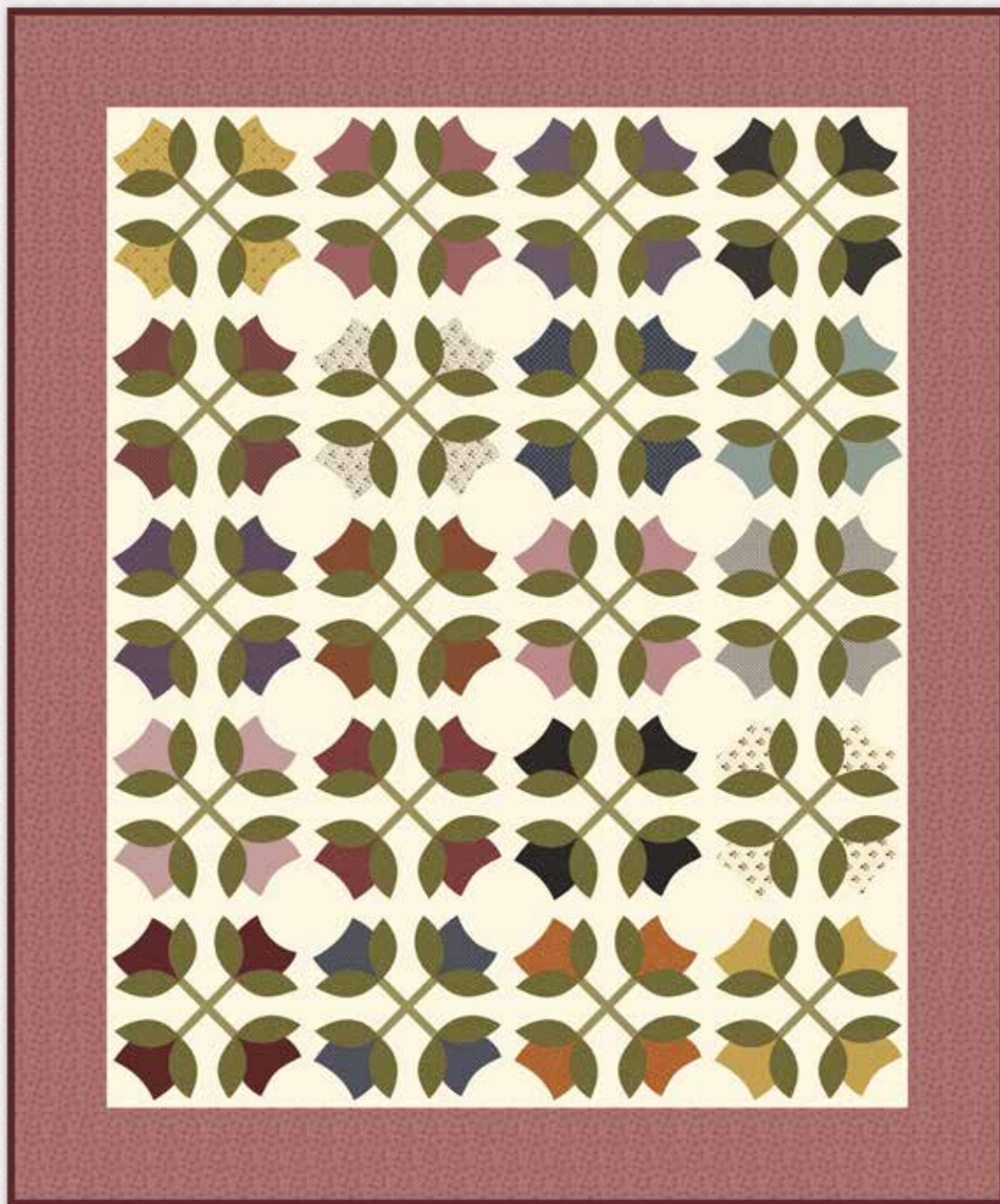


TIPTOE THROUGH THE TULIPS



BUTTERMILK
BASICS



by
Stacy West of
Buttermilk Basin Design Co.

TIPTOE THROUGH THE TULIPS

FINISHED QUILT SIZE 58" x 70"

Finished Block Size 12" x 12"

Measurements include ¼" seam allowance.

Sew with right sides together unless otherwise stated.

Please check our website www.rileyblakedesigns.com for any revisions before starting this project. This pattern requires a basic knowledge of quilting technique and terminology. The quilt and block diagrams portrayed are virtual images. The layout and look of your project may differ when using actual fabric.

FABRIC REQUIREMENTS

1 10-9180-42 Buttermilk Basics 10-Inch Stacker

1¼ Yards C9186 Pink Sprigs

¼ Yard C9184 Green Diamonds

2¾ Yards C9184 Cream Diamonds

1½ Yards C9186 Green Sprigs

Binding ⅝ Yard (60 cm)

CUTTING REQUIREMENTS

Please read instructions first before cutting. Seam allowances vary so measure through the center of the quilt before cutting border pieces.

10-Inch Stacker

Select 20 - 10" squares for tulips. Using the template provided, cut 4 tulips from each. Add ¼" seam allowance if necessary for your favorite method of applique.

Pink Sprigs

Cut 6 strips 5½" x WOF for Border.

Green Diamonds

Using the template provided, cut 40 stems. Add ¼" seam allowance if necessary for your favorite method of applique.

Cream Diamonds

Cut 7 strips 13" x WOF. Cut the strips into 20 squares 13" x 13".

Green Sprigs

Using the template provided, cut 160 leaves. Add ¼" seam allowance if necessary for your favorite method of applique.

QUILT ASSEMBLY

Refer to the Quilt Center Diagram for placement of fabrics and pieces.

Tulip Block

Use your favorite method of applique to attach the tulips, stems, and leaves to the cream diamond 13" squares. Trim squares to 12½" when finished with the applique. Make 20 Tulip Blocks.

Quilt Center Assembly

Refer to the Quilt Center Diagram for Tulip Block placement. Lay out the blocks in 5 rows of 4 blocks. Sew the rows together to complete the quilt center.

Border

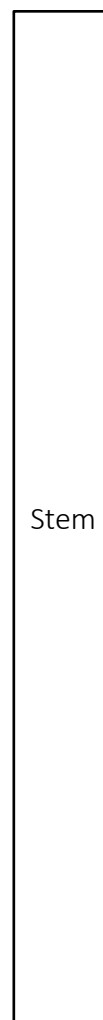
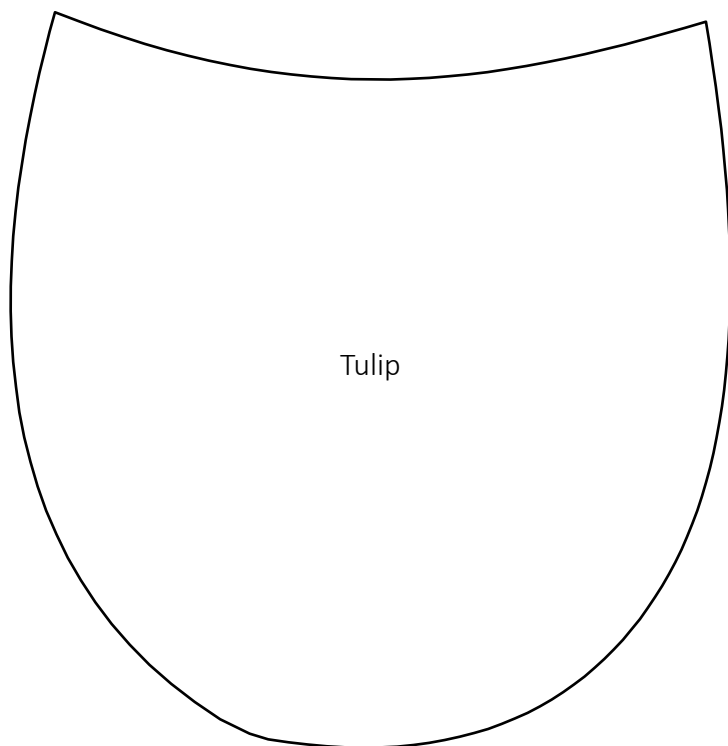
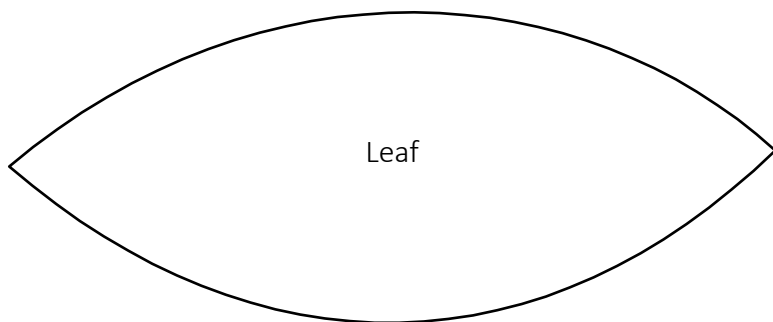
Seam allowances vary so measure through the center of the quilt before cutting border pieces. Sew border strips together end to end if necessary to get the length needed. Sew side borders first.

Side borders should be 60½". Top and bottom borders should be 58½".

Finish quilt by layering the quilt top, batting, and back. Bind with your favorite Penny Rose fabric from the Buttermilk Basics Collection. Have fun with your colors and enjoy the journey of making your quilt.

TIPTOE THROUGH THE TULIPS

This should
measure 1".



TIPTOE THROUGH THE TULIPS

Quilt Center Diagram

