

Prim Sew Along

 **Riley Blake**
DESIGNS



Featuring Prim by Lori Holt of Bee in my Bonnet



Prim

Sew Along Schedule

www.beeinmybonnetco.blogspot.com

	Monday, August 3	Bee Prepared!
Week 1	Monday, August 24	Block One
Week 2	Monday, August 31	Block Two
Week 3	Monday, September 7	Block Three
	Wednesday, September 9	Prim Steps & Corner Star Blocks
Week 4	Monday, September 14	Block Four
Week 5	Monday, September 21	Block Five
Week 6	Monday, September 28	Block Six
Week 7	Monday, October 5	Block Seven
Week 8	Monday, October 12	Block Eight
Week 9	Monday, October 19	Block Nine
Week 10	Monday, October 26	Block Ten
Week 11	Monday, November 2	Block Eleven
Week 12	Monday, November 9	Block Twelve
Week 13	Wednesday, November 11	The Big Finish!

beeinmybonnetco.blogspot.com

Prim Sew Along Guide

FINISHED QUILT SIZE 72" x 90"

WOF = Width of Fabric, LOF = Length of Fabric

This guide requires a basic knowledge of quilting technique and terminology. The quilt and block diagrams portrayed are virtual images. The layout and look of your project may differ when using actual fabric.

The guide is intended to be used in conjunction with Lori Holt's Prim Sew Along. Join Lori on her blog every Monday starting August 24, 2020 at beeinmybonnetco.blogspot.com for weekly instructions. Don't forget to watch for her Bee prepared blog post on Monday, August 3rd.

FABRIC REQUIREMENTS

- 1 FQ-9690-42 Prim Fat Quarter Bundle
- 1 Yard C9707 Pewter Ticking (Binding and extra appliqué)
- 1 Fat Quarter C9710 Pebble Bee Backgrounds Shirting
- 1 Fat Quarter C9711 Tea Rose Bee Backgrounds Clover
- 3 3/4 Yards C605 Latte Shabby
- 1 Fat Quarter C120 Beach Solid
- 1/2 Yard C120 Clover Solid
- 2 1/2 Yards WB9709 Green, Pink or Blue Wide Back (Backing)

OTHER SUPPLIES

- STT-16534 Prim Sew Simple Shapes
- TH-LH50PC10 Prim Aurifill Thread Set
- STTI-5531 10 1/2" Trim-it™ Ruler
- ST-4819 16 1/2" Trim-it™ Ruler
- 2 Packages- ST-4913 Bee in my Bonnet Interfacing
- N039-7803 Clover Point 2 Point Turner
- N093 Sue Daley Designs Appliqué Glue
- STSEAMGUIDE Seams Sew Easy™ Seam Guide
- DB-16552, 53, 54, 55, 56, 57 Prim Design Boards
- 1/4" and 1/2" Clover Bias Tape Makers
- ST-8644 Appliqué Pretty Pins
- DMC 3021 or Aurifloss 1140



*Fabric requirements are subject to change.

*NOTE: All appliqué block backgrounds are cut a little larger than unfinished size to allow for trimming up.

The appliqué portions of the quilt are made using Lori's applique method. The link below to Week 1 video of her previous Granny's Garden Sew Along on Riley Blake Designs YouTube Channel shows her appliqué technique.

<https://www.youtube.com/watch?v=9ugkW-zYrJU>

Prim Sew Along Guide

Fabric Cutting Guide

Always be mindful when cutting pieces from each fabric in your kit by cutting **LARGEST PIECES FIRST** as well as any width of fabric strips for the bias tape makers.



C9690 Cottage Bloom

Cut 2 – 4" x 4" use K-60 for Flowers (Block One)
Cut 1 – 2" x 2½" use K-45 for Bird Wing (Block Four)
Cut 1- 2½" x 16½" for Prim Steps K
Cut 1- 2½" x 10½" for Sashing (Right Border)
Cut 1- 2½" x 6½" for Prim Steps A
Cut 3- 2½" x 5½" for Prim Steps H, I, and L



C9690 Daisy Bloom

Cut 1 – 5½" x 9" use K-28 for Beehive (Block One)
Cut 2 – 2" x 2" use K-11 for Flower Centers (Block Two)
Cut 5 – 2" x 2" use K-11 for Flower Centers (Block Three)
Cut 1 – 3½" x 4" use K-19 for Vase (Block Seven)
Cut 1 – 3" x 3" use K-9 for Large Flower Center (Block Nine)
Cut 2 – 2" x 2" use K-10 for Small Flower Centers (Block Nine)
Cut 2 – 2" x 2" use K-11 for Flower Centers (Block Twelve)
Cut 2 – 2½" x 12½" for Prim Steps C and F
Cut 1 – 2½" x 6½" for Prim Steps M



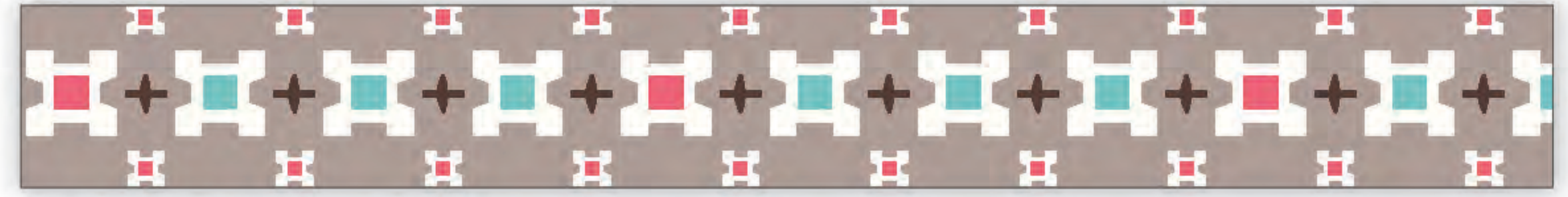
C9691 Barn Red Blossom

Cut 1 – 3½" x 5" use K-32 for Heart (Block One)
Cut 2 – 2" x 2" use K-10 for Cherries (Block Three)
Cut 2 – 3" x 3" use K-62 for Small Flowers (Block Seven)
Cut 1 – 3" x 6½" for Piecing Bird* use K-42 (Block Nine)
Cut 14 - 2½" x 2½" for Prim Steps Centers



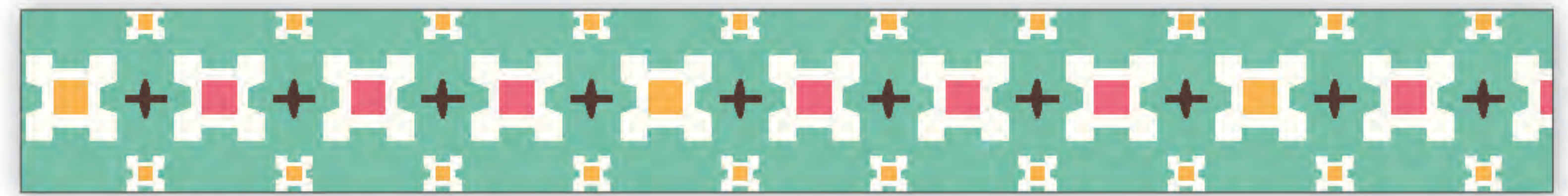
C9691 Denim Blossom

Cut 1- 1" x 18" for ½" Straight Bias (Block Three)
Cut 1- 3" x 4½" use K-31 for Flag Top Corner (Block One)
Cut 1- 2½" x 4½" for Piecing Bird* use K-44 (Block Seven)
Cut 2- 4" x 4" use K-60 for Flowers (Block Eleven)
Cut 8- 1¾" x 1¾" for Corner Star Block
Cut 1- 2½" x 12½" for Prim Steps M
Cut 2- 2½" x 6½" for Prim Steps F and K
Cut 1- 2½" x 5½" for Prim Steps H



C9692 Pewter Calico

Cut 1- 2½" x 2½" use K-13 for Large Star Center (Block Three)
Cut 1- 2½" x 2½" use K-13 for Large Star Center (Block Four)
Cut 1- 6½" x 9½" use K-38 for Sheep (Block Eight)
Cut 2- 2½" x 12½" for Prim Steps A and E
Cut 1- 2½" x 10½" for Sashing (Left Border)
Cut 2- 2½" x 5½" for Prim Steps K and N



C9692 Sea Glass Calico

Cut 3- 2½" x 16½" for Prim Steps B, F, and J
Cut 2- 2½" x 5½" for Prim Steps I and M



C9693 Barn Red Circles

Cut 1- 2½" x 3½" use K-33 for Heart (Block Nine)
Cut 1- 5" x 5" use K-12 for Large Star (Block Ten)
Cut 8- 1¾" x 1¾" for Corner Star Block



C9693 Clover Circles

Cut 1- 2" x 2½" use K-53 for Cherry Leaf (Block Three)
Cut 1- 3" x 4" use K-46 for Birdhouse Hill (Block Four)
Cut 4- 1½" x 2½" for Piecing Flowers* use K-57 (Block Five)
Cut 8- 2" x 4" use K-51 for Leaves (Block Five)
Cut 2- 1½" x 3" for Piecing Flowers* use K-54 (Block Six)
Cut 2- 2" x 4" use K-51 for Leaves (Block Seven)
Cut 1- 3½" x 4½" use K-24 for Pineapple Top (Block Nine)
Cut 2- 3" x 3" use K-54 for Leaves (Block Ten)
Cut 2- 2" x 2½" use K-53 for Pear Leaves (Block Eleven)
Cut 4- 2" x 2½" use K-45 for Small Leaves (Block Twelve)

Prim Sew Along Guide

Fabric Cutting Guide

Always be mindful when cutting pieces from each fabric in your kit by cutting **LARGEST PIECES FIRST** as well as any width of fabric strips for the bias tape makers.



C9694 Sea Glass Daisy

Cut 5- 2½" x 2½" use K-56 for Flowers (Block Three)
Cut 1- 3" x 3½" for Dress Top use K-26 (Block Eight)
Cut 1- 4" x 4" use K-61 for Large Flower (Block Nine)
Cut 2- 3" x 3" use K-62 for Small Flowers (Block Nine)
Cut 1- 2½" x 4½" for Piecing Bird* (trace reversed template) use K-44 (Block Ten)
Cut 2- 2" x 2" use K-10 for Flower Centers (Block Eleven)
Cut 2- 2½" x 16½" for Prim Steps A and K
Cut 1- 2½" x 10½" for Sashing (Bottom Border)
Cut 1- 2½" x 5½" for Prim Steps D



C9694 Tea Rose Daisy

Cut 1- 3½" x 4" use K-35 for Strawberry (Block Two)
Cut 2- 1½" x 2½" for Piecing Flowers* use K-57 (Block Four)
Cut 1- 5" x 5" use K-12 for Large Star (Block Eight)
Cut 1- 2½" x 3½" use K-33 for Heart (Block Ten)
Cut 2- 2½" x 16½" for Prim Steps J and M
Cut 1- 2½" x 12½" for Prim Steps I
Cut 1- 2½" x 6½" for Prim Steps B



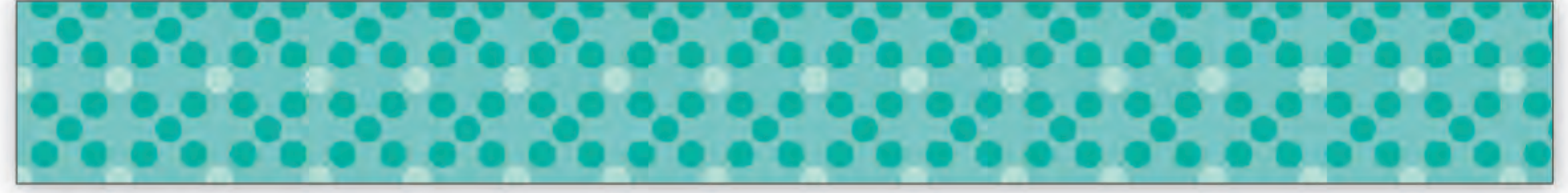
C9695 Granny Apple Churndash

Cut 4- 2" x 4" use K-51 for Leaves (Block Two)
Cut 2- 2" x 2½" use K-45 for Leaves (Block Three)
Cut 5- 2" x 3½" use K-43 for Leaves (Block Eight)
Cut 3- 3" x 3" use K-54 for Leaves (Block Ten)
Cut 3- 2" x 4" use K-51 for Leaves (Block Eleven)
Cut 1- 2½" x 16½" for Sashing (Quilt Center)
Cut 2- 2½" x 6½" for Prim Steps E and I
Cut 1- 2½" x 5½" for Prim Steps N



C9695 Melon Churndash

Cut 2- 2½" x 3" use K-57 for Tulips (Block Twelve)
Cut 1- 2½" x 16½" for Prim Steps D
Cut 1- 2½" x 16½" for Sashing (Quilt Center)
Cut 1- 2½" x 10½" for Sashing (Top Border)
Cut 1- 2½" x 5½" for Prim Steps G



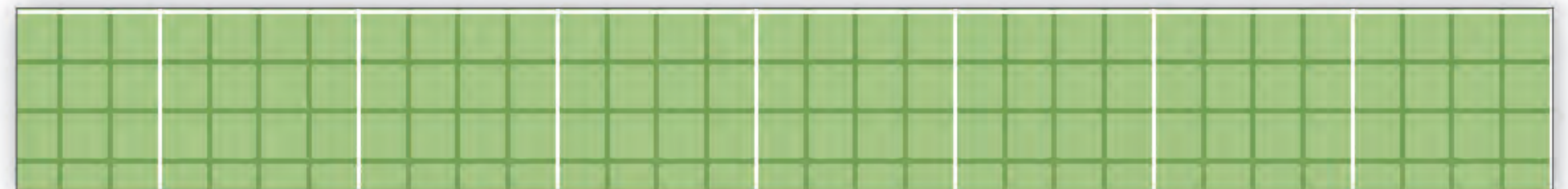
C9696 Cottage Dot

Cut 2- 4" x 4" use K-60 for Flowers (Block One)
Cut 1- 2½" x 4½" for Piecing Bird* use K-44 (Block Four)
Cut 1- 2½" x 16½" for Prim Steps D
Cut 2- 2½" x 12½" for Prim Steps J and N
Cut 2- 2½" x 6½" for Prim Steps F and I
Cut 1- 2½" x 5½" for Prim Steps C



C9696 Pebble Dot

Cut 1- 5" x 5" use K-12 for Large Star (Block Four)
Cut 1- 3½" x 3½" use K-14 for Small Star (Block Four)
Cut 1- 5" x 5" use K-12 for Large Star (Block Five)
Cut 4- 2" x 2" use K-11 for Flower Centers (Block Five)
Cut 5- 1½" x 1½" use K-8 for House Windows (Block Six)
Cut 1- 5" x 5" use K-12 for Large Star (Block Nine)
Cut 1- 5" x 5" use K-12 for Large Star (Block Eleven)
Cut 1- 3½" x 3½" use K-14 for Small Star (Block Eleven)
Cut 1- 3½" x 5" use K-32 for Heart (Block Twelve)
Cut 8- 1¾" x 1¾" for Corner Star Block
Cut 1- 2½" x 16½" for Prim Steps L



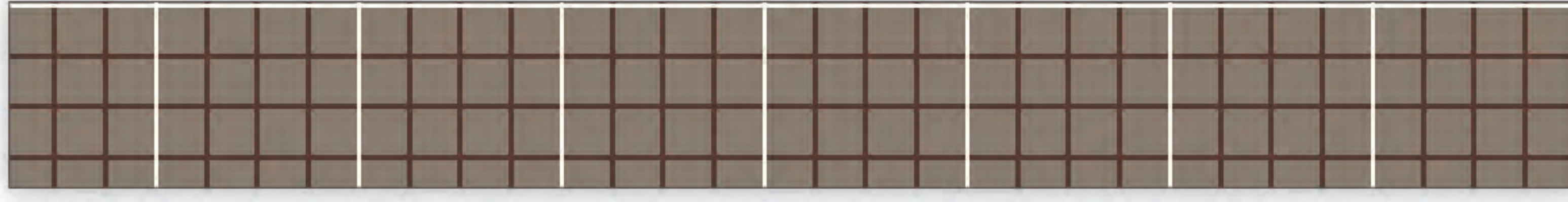
C9697 Granny Apple Evenweave

Cut 7- 2" x 2½" use K-53 for Strawberry Tops (Block Two)
Cut 2- 2" x 2½" use K-45 for Leaves (Block Three)
Cut 2- 2" x 4" use K-51 for Leaves (Block Four)
Cut 3- 2" x 3½" use K-43 for Leaves (Block Six)
Cut 2- 2" x 4" use K-51 for Leaves (Block Seven)
Cut 2- 2" x 6" use K-50 for Leaves (Block Nine)
Cut 4- 2" x 4" use K-51 for Leaves (Block Twelve)
Cut 8- 1¾" x 1¾" for Corner Star Block
Cut 1- 2½" x 16½" for Sashing (Quilt Center)
Cut 1- 2½" x 12½" for Prim Steps M
Cut 1- 2½" x 5½" for Prim Steps J

Prim Sew Along Guide

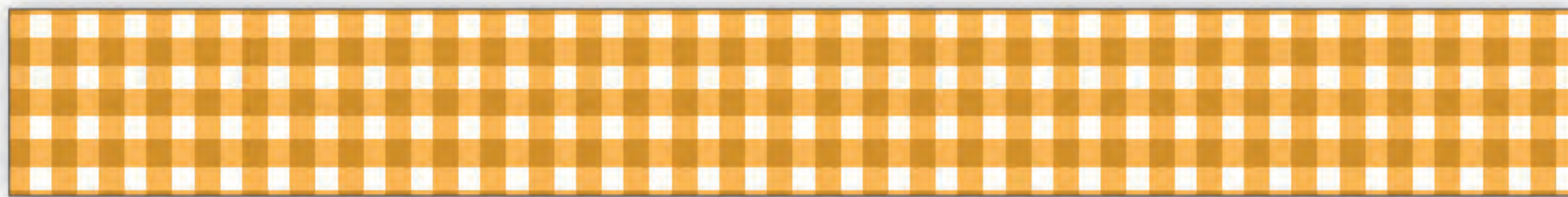
Fabric Cutting Guide

Always be mindful when cutting pieces from each fabric in your kit by cutting **LARGEST PIECES FIRST** as well as any width of fabric strips for the bias tape makers.



C9697 Pebble Evenweave

- Cut 1- 5/8" x 12" for 1/4" Straight Bias (Block Eleven)
- Cut 1- 3" x 6 1/2" for Piecing Bird* use K-42 (Block Two)
- Cut 1- 5" x 5" use K-12 for Large Star (Block Three)
- Cut 1- 3" x 4 1/2" for Piecing Birdhouse Roof* use K-41 (Block Four)
- Cut 1- 3 1/2" x 3 1/2" use K-14 for Small Star (Block Seven)
- Cut 1- 1 1/2" x 5 1/2" for Piecing Shaker Box Lid* use K-29 (Block Nine)
- Cut 1- 1 1/2" x 4 1/2" for Piecing Shaker Box Lid* use K-29 (Block Nine)
- Cut 1- 1 1/2" x 3 1/2" for Piecing Shaker Box Lid* use K-29 (Block Nine)
- Cut 1- 2 1/2" x 16 1/2" for Prim Steps H
- Cut 1- 2 1/2" x 10 1/2" for Sashing (Top Border)



C9698 Daisy Gingham

- Cut 1- 6" x 6" for 1/4" Curved Bias (Blocks Four and Six)
Sub-cut 6- 5/8" Strips from corner to corner on the bias
- Cut 1- 2" x 3" for Piecing Man Hat* use K-26 (Block Four)
- Cut 1- 3" x 6" use K-49 for Moon (Block Six)
- Cut 3- 1 1/2" x 4 1/2" use K-7 for Church Windows (Block Seven)
- Cut 3- 3 1/2" x 3 1/2" use K-59 for Flowers (Block Eight)
- Cut 1- 3" x 5" use K-34 for Pear (Block Eleven)
- Cut 1- 3" x 3" for Corner Star Block
- Cut 1- 2 1/2" x 16 1/2" for Sashing (Quilt Center)
- Cut 2- 2 1/2" x 6 1/2" for Prim Steps D and J
- Cut 1- 2 1/2" x 5 1/2" for Prim Steps E



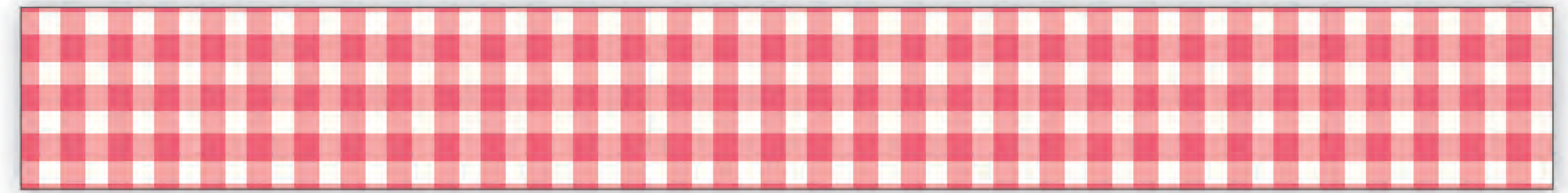
C9698 Sea Glass Gingham

- Cut 1- 2" x 2 1/2" use K-45 for Bird Wing (Block Ten)
- Cut 1- 2 1/2" x 16 1/2" for Sashing (Quilt Center)
- Cut 1- 2 1/2" x 16 1/2" for Prim Steps E
- Cut 1- 2 1/2" x 12 1/2" for Prim Steps G
- Cut 1- 2 1/2" x 6 1/2" for Prim Steps M
- Cut 1- 2 1/2" x 5 1/2" for Prim Steps F



C9698 Pebble Gingham

- Cut 1- 1" x 18" for 1/2" Straight Bias (Block Four)
- Cut 1- 5/8" x 18" for 1/4" Straight Bias (Block Eight)
- Cut 1- 2 1/2" x 2 1/2" use K-13 for Large Star Center (Block One)
- Cut 1- 2" x 3 1/2" use K-43 for Bird Wing (Block Two)
- Cut 1- 2" x 2" use K-15 for Small Star Center (Block Three)
- Cut 1- 2 1/2" x 2 1/2" use K-13 for Large Star Center (Block Six)
- Cut 1- 2" x 2 1/2" for Piecing Lady Hat* use K-47 (Block Eight)
- Cut 1- 2 1/2" x 4 1/2" for Piecing Medium Shaker Box* use K-29 (Block Nine)
- Cut 1- 2" x 6 1/2" use K-16 for Cake Stand Top (Block Eleven)
- Cut 1- 6" x 10 1/2" use K-1 for Hand (Block Twelve)
- Cut 1- 2 1/2" x 12 1/2" for Prim Steps I
- Cut 1- 2 1/2" x 10 1/2" for Sashing (Left Border)



C9698 Tea Rose Gingham

- Cut 2- 2" x 4" for Piecing Angel Dress Sleeves* use K-40 (Block Three)
- Cut 1- 3 1/2" x 5" use K-32 for Angel Wings (Block Three)
- Cut 1- 2 1/2" x 2 1/2" use K-13 for Large Star Center (Block Eight)
- Cut 1- 2 1/2" x 16 1/2" for Sashing (Quilt Center)
- Cut 3- 2 1/2" x 12 1/2" for Prim Steps F, K, and L



C9699 Autumn Homespun

- Cut 1- 2 1/2" x 2 1/2" use K-13 for Large Star Center (Block Twelve)
- Cut 2- 2 1/2" x 16 1/2" for Sashing (Quilt Center)
- Cut 2- 2 1/2" x 12 1/2" for Prim Steps B and G
- Cut 3- 2 1/2" x 6 1/2" for Prim Steps A, K, and L



C9699 Clover Homespun

- Cut 1- 2" x 2" use K-15 for Small Star Center (Block Four)
- Cut 1- 4 1/2" x 6 1/2" use K-3 for Church Side (Block Seven)
- Cut 1- 2 1/2" x 2 1/2" use K-13 for Large Star Center (Block Nine)
- Cut 2- 2 1/2" x 16 1/2" for Prim Steps G and M
- Cut 1- 2 1/2" x 10 1/2" for Sashing (Left Border)
- Cut 1- 2 1/2" x 6 1/2" for Prim Steps D

Prim Sew Along Guide

Fabric Cutting Guide

Always be mindful when cutting pieces from each fabric in your kit by cutting **LARGEST PIECES FIRST** as well as any width of fabric strips for the bias tape makers.



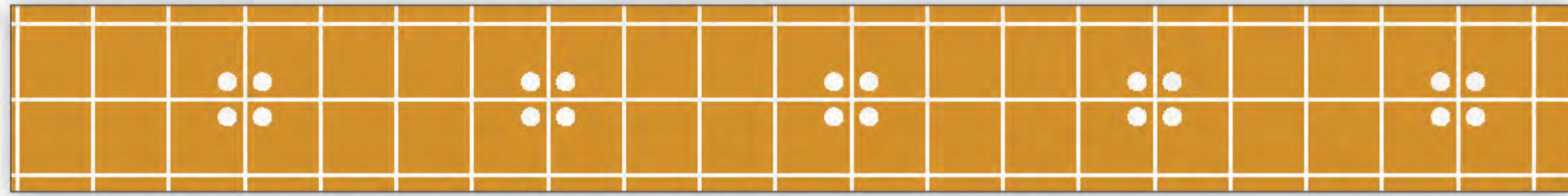
C9700 Sea Glass Leaves

Cut 1- 5½" x 9" use K-5 for House Side (Block Six)
Cut 1- 2½" x 2½" use K-13 for Large Star Center (Block Eleven)
Cut 1- 3" x 3" for Corner Star Block
Cut 1- 2½" x 16½" for Sashing (Quilt Center)
Cut 1- 2½" x 16½" for Prim Steps F
Cut 1- 2½" x 5½" for Prim Steps G



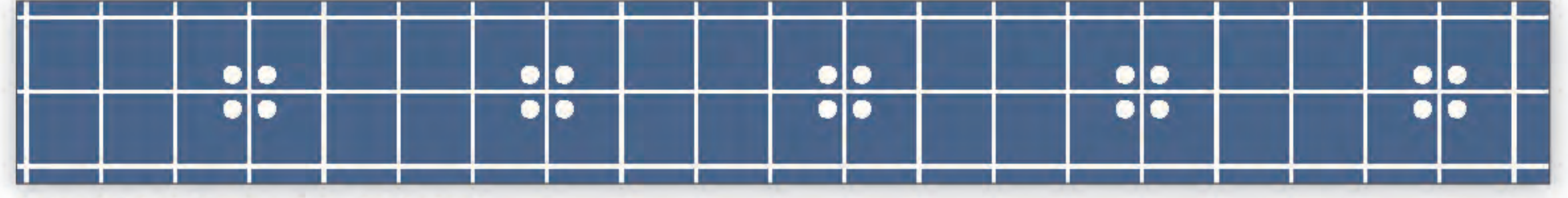
C9700 Tea Rose Leaves

Cut 2- 2" x 6" for Piecing Man Sleeves* use K-27 (Block Four)
Cut 1- 4½" x 6" for Piecing Man Shirt* use K-25 (Block Four)
Cut 1- 2½" x 2½" use K-13 for Large Star Center (Block Five)
Cut 1- 2" x 2" use K-15 for Small Star Center (Block Seven)
Cut 1- 2½" x 2½" use K-13 for Large Star Center (Block Ten)
Cut 1- 3" x 3" for Corner Star Block
Cut 1- 2½" x 16½" for Prim Steps E
Cut 1- 2½" x 16½" for Sashing (Quilt Center)
Cut 2- 2½" x 5½" for Prim Steps C and M



C9701 Butterscotch Plaid

Cut 1- ⅝" x 18" for ¼" Straight Bias (Block Eight)
Cut 1- 2" x 2½" use K-45 for Bee Body (Block One)
Cut 1- 2" x 3½" use K-43 for Lady Hair (Block Eight)
Cut 1- 4½" x 8" use K-23 for Pineapple (Block Nine)
Cut 2- 2" x 4" for Piecing Sunflowers* use K-55 (Block Ten)
Cut 1- 2½" x 16½" for Prim Steps I
Cut 1- 2½" x 12½" for Prim Steps H
Cut 1- 2½" x 5½" for Prim Steps B



C9701 Denim Plaid

Cut 1- 3½" x 10½" use K-37 for Pie Pan (Block Three)
Cut 1- 5½" x 6" for Piecing Man Pants* use K-25 (Block Four)
Cut 1- 2" x 2½" use K-45 for Bird Wing (Block Seven)
Cut 2- 4" x 4" use K-60 for Flowers (Block Eleven)
Cut 1- 2½" x 16½" for Sashing (Quilt Center)
Cut 1- 2½" x 6½" for Prim Steps B



C9702 Daisy Posy

Cut 2- 2" x 2" use K-10 for Flower Centers (Block One)
Cut 1- 4" x 6" use K-36 for Vase (Block Six)
Cut 2- 2" x 2" use K-11 for Flower Centers (Block Seven)
Cut 1- 3" x 5" use K-34 for Pear (Block Eleven)
Cut 1- 2½" x 16½" for Sashing (Quilt Center)
Cut 1- 2½" x 16½" for Prim Steps L
Cut 1- 2½" x 12½" for Prim Steps K
Cut 1- 2½" x 6½" for Prim Steps G
Cut 1- 2½" x 5½" for Prim Steps A



C9702 Pebble Posy

Cut 1- 5" x 5" use K-12 for Large Star (Block Six)
Cut 1- 2" x 4½" use K-48 for Church Steps (Block Seven)
Cut 1- 3½" x 3½" use K-14 for Small Star (Block Eight)
Cut 1- 2½" x 3½" for Piecing Small Shaker Box* use K-29 (Block Nine)
Cut 6- 2½" x 2½" for Sashing Cornerstones
Cut 1- 2½" x 12½" for Prim Steps J
Cut 1- 2½" x 10½" for Sashing (Right Border)
Cut 1- 2½" x 6½" for Prim Steps N

Prim Sew Along Guide

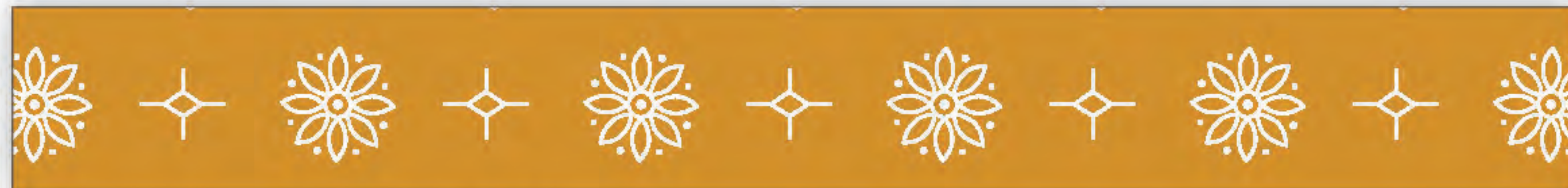
Fabric Cutting Guide

Always be mindful when cutting pieces from each fabric in your kit by cutting **LARGEST PIECES FIRST** as well as any width of fabric strips for the bias tape makers.



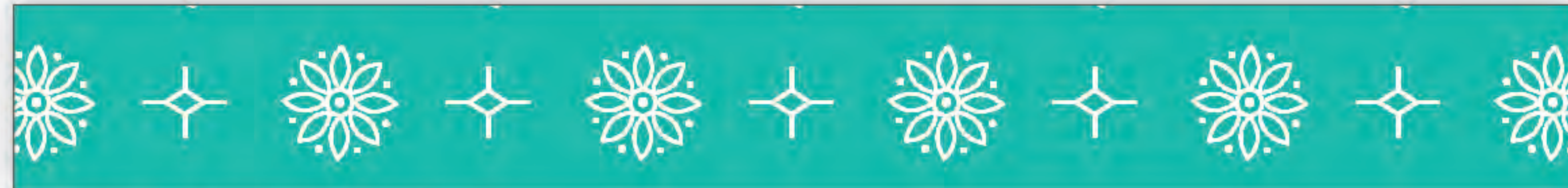
C9706 Autumn Vintage

Cut 2- 3" x 3" use K-62 for Flowers (Block Two)
Cut 3- 2" x 2" use K-10 for Flower Centers (Block Eight)
Cut 2- 3½" x 3½" use K-59 for Daisies (Block Twelve)
Cut 8- 3" x 3" for Corner Star Block
Cut 1- 2½" x 16½" for Sashing (Quilt Center)
Cut 1- 2½" x 6½" for Prim Steps C



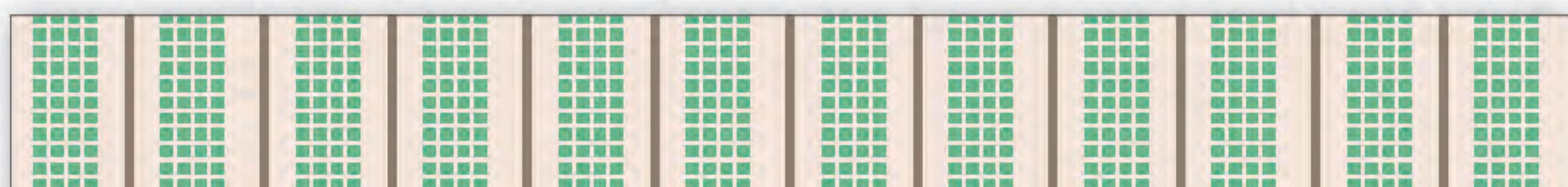
C9706 Butterscotch Vintage

Cut 2- ⅝" x 18" for ¼" Straight Bias (All Bird Legs)
Cut 1- 1" x 3" for Piecing Bird Beak* use K-42 (Block Two)
Cut 1- 1" x 2½" for Piecing Bird Beak* use K-44 (Block Four)
Cut 4- 2½" x 2½" for Piecing Flowers* use K-57 (Block Five)
Cut 1- 1" x 2½" for Piecing Bird Beak* use K-44 (Block Seven)
Cut 1- 2½" x 3½" use K-20 for Flower Vase (Block Seven)
Cut 1- 1" x 3" for Piecing Bird Beak* use K-42 (Block Nine)
Cut 1- 1" x 2½" for Piecing Bird Beak* use K-44 (Block Ten)
Cut 8- 3" x 3" for Corner Star Block
Cut 1- 2½" x 16½" for Prim Steps N



C9706 Vivid Vintage

Cut 1- 10" x 10" for ¼" Curved Bias (Block Two)
Sub-cut 1- ⅝" Strip from corner to corner on the bias
Cut 1- 3" x 6½" for Piecing Basket Bottom* use K-18 (Block Two)
Cut 1- 2" x 6½" use K-16 for Basket Top (Block Two)
Cut 8- 3" x 3" for Corner Star Block
Cut 1- 2½" x 6½" for Prim Steps E



C9707 Alpine Ticking

Cut 1- 4½" x 6½" use K-3 for House (Block Six)
Cut 1- 2" x 2" use K-15 for Small Star Center (Block Eight)
Cut 1- 2" x 2" use K-15 for Small Star Center (Block Eleven)
Cut 1- 3" x 3" for Corner Star Block
Cut 1- 2½" x 16½" for Sashing (Quilt Center)
Cut 1- 2½" x 16½" for Prim Steps A
Cut 1- 2½" x 12½" for Prim Steps E



C9707 Pewter Ticking (Fat Quarter)

Cut 1- 1" x 20" for ½" Straight Bias (Block One)
Cut 2- 2½" x 2½" use K-13 for Large Star Centers (Block Two)
Cut 2- 2" x 2" use K-15 for Small Star Centers (Block Six)
Cut 1- 6½" x 12½" use K-2 for Church Front (Block Seven)
Cut 1- 4" x 7" use K-17 for Cake Plate (Block Eleven)

C9707 Pewter Ticking (1 Yard)

Cut 9- 2½" x WOF for Binding
Cut 2- 2½" x WOF and Sub-cut:
Cut 1- 2½" x 16½" for Prim Steps C
Cut 2- 2½" x 10½" for Sashing (Right and Bottom Borders)
Cut 1- 2½" x 6½" for Prim Steps N
Cut 2- 2½" x 5½" for Prim Steps D and L



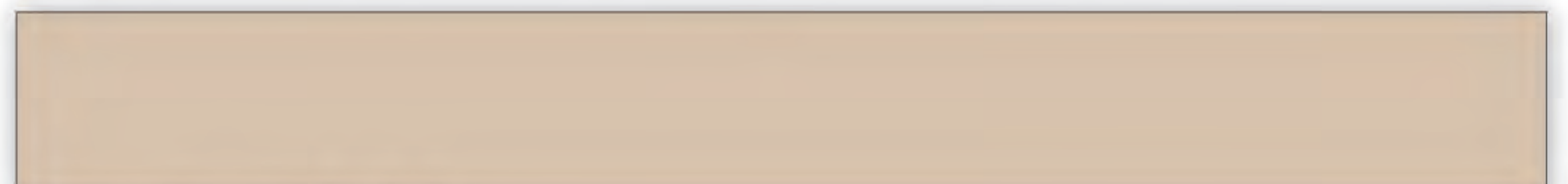
C9710 Pebble Shirting

Cut 2- 2" x 2½" use K-45 for Bee Wings (Block One)
Cut 1- 4½" x 4½" for Piecing Bird House* use K-41 (Block Four)



C9711 Tea Rose Clover

Cut 1- 12" x 12" for ½" Curved Bias (Block One)
Sub-cut 3- 1" Strips from corner to corner on the bias
Cut 1- 5½" x 8" use K-39 for Angel Dress (Block Three)



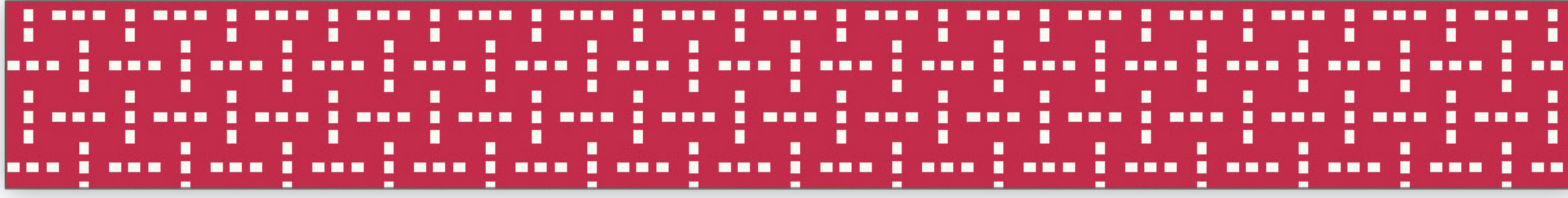
C120 Beach Solid

Cut 1- 3" x 3" use K-9 for Angel Head (Block Three)
Cut 2- 2" x 2" for Piecing Angel Hands* use K-40 (Block Three)
Cut 2- 2" x 4" use K-40 for Angel Legs (Block Three)
Cut 1- 2" x 3" for Piecing Man Face* use K-26 (Block Four)
Cut 2- 1½" x 2" for Piecing Man Hands* use K-27 (Block Four)
Cut 1- 2½" x 6" for Piecing Man Feet* use K-25 (Block Four)
Cut 1- 1½" x 2" for Piecing Lady Hand* use K-40 (Block Eight)
Cut 1- 2½" x 2½" use K-47 for Lady Face (Block Eight)

Prim Sew Along Guide

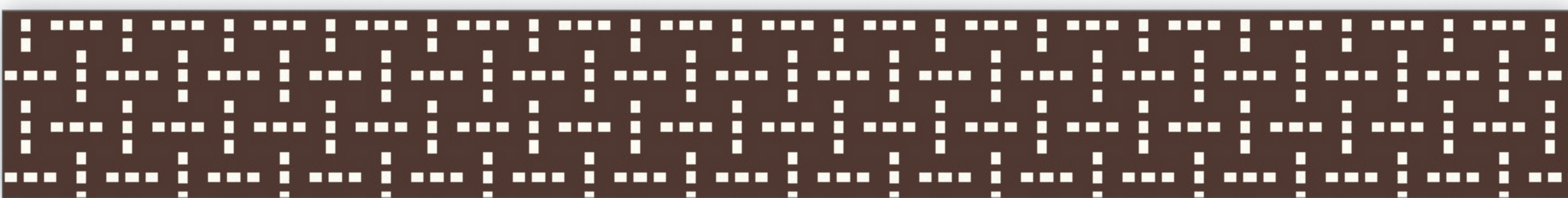
Fabric Cutting Guide

Always be mindful when cutting pieces from each fabric in your kit by cutting **LARGEST PIECES FIRST** as well as any width of fabric strips for the bias tape makers.



C9703 Jazzberry Stitches

Cut 1- $\frac{5}{8}$ " x 18" for $\frac{1}{4}$ " Straight Bias (Block Four)
Cut 1- 5" x 9 $\frac{1}{2}$ " use K-30 for Flag (Block One)
Cut 4- 4 $\frac{1}{2}$ " x 4 $\frac{1}{2}$ " use K-58 for Daisies (Block Five)
Cut 1- 1 $\frac{1}{2}$ " x 3 $\frac{1}{2}$ " use K-8 for Door (Block Six)
Cut 2- 1 $\frac{1}{2}$ " x 2" use K-8 for Chimneys (Block Six)
Cut 2- 4" x 4" use K-61 for Flowers (Block Seven)
Cut 1- 2" x 3 $\frac{1}{2}$ " use K-43 for Bird Wing (Block Nine)



C9703 Raisin Stitches

Cut 1- 2" x 6" use K-27 for Beehive Door (Block One)
Cut 2- 5" x 5" use K-12 for Large Stars (Block Two)
Cut 1- 2" x 2" use K-10 for Birdhouse Door (Block Four)
Cut 1- 2 $\frac{1}{2}$ " x 6 $\frac{1}{2}$ " use K-4 for House Roof (Block Six)
Cut 1- 2 $\frac{1}{2}$ " x 6 $\frac{1}{2}$ " use K-4 (trace template reversed) for Church Roof (Block Seven)
Cut 1- 2 $\frac{1}{2}$ " x 3 $\frac{1}{2}$ " use K-47 for Sheep Face (Block Eight)
Cut 4- 1 $\frac{1}{2}$ " x 2 $\frac{1}{2}$ " use K-7 for Sheep Legs (Block Eight)
Cut 1- 2" x 2 $\frac{1}{2}$ " use K-45 for Sheep Ear (Block Eight)
Cut 2- 1 $\frac{1}{2}$ " x 4" for Piecing Sunflowers* use K-55 (Block Ten)
Cut 1- 5" x 5" use K-12 for Large Star (Block Twelve)



C9704 Coral Sweet

Cut 2- 3 $\frac{1}{2}$ " x 4" use K-35 for Strawberries (Block Two)
Cut 2- 2 $\frac{1}{2}$ " x 2 $\frac{1}{2}$ " for Piecing Flowers* use K-57 (Block Four)
Cut 2- 2 $\frac{1}{2}$ " x 3" for Piecing Flowers* use K-54 (Block Six)
Cut 1- 2 $\frac{1}{2}$ " x 16 $\frac{1}{2}$ " for Prim Steps N
Cut 2- 2 $\frac{1}{2}$ " x 12 $\frac{1}{2}$ " for Prim Steps A and H
Cut 2- 2 $\frac{1}{2}$ " x 6 $\frac{1}{2}$ " for Prim Steps G and J



C9704 Pewter Sweet

Cut 1- 5" x 5" use K-12 for Large Star (Block One)
Cut 1- 3 $\frac{1}{2}$ " x 3 $\frac{1}{2}$ " use K-14 for Small Star (Block Three)
Cut 2- 3 $\frac{1}{2}$ " x 3 $\frac{1}{2}$ " use K-14 for Small Stars (Block Six)
Cut 1- 2 $\frac{1}{2}$ " x 5 $\frac{1}{2}$ " for Piecing Large Shaker Box* use K-29 (Block Nine)
Cut 1- 9 $\frac{1}{2}$ " x 9 $\frac{1}{2}$ " use K-21 for Cat (Block Ten)
Cut 1- 4 $\frac{1}{2}$ " x 7 $\frac{1}{2}$ " use K-22 for Cat Tail (Block Ten)



C9705 Coral Stripe

Cut 1- 2 $\frac{1}{2}$ " x 16 $\frac{1}{2}$ " for Sashing (Quilt Center)
Cut 3- 2 $\frac{1}{2}$ " x 12 $\frac{1}{2}$ " for Prim Steps B, D, and N
Cut 1- 2 $\frac{1}{2}$ " x 6 $\frac{1}{2}$ " for Prim Steps H



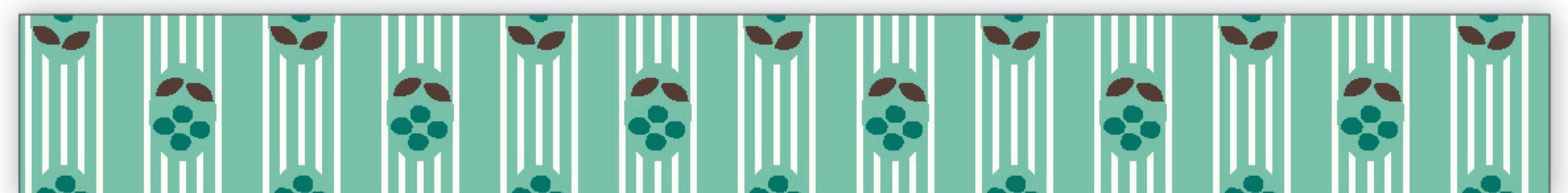
C9705 Granny Apple Stripe

Cut 4- 2" x 3" use K-52 for Leaves (Block One)
Cut 2- 2" x 2 $\frac{1}{2}$ " use K-45 for Leaves (Block Three)
Cut 2- 2" x 4" use K-51 for Leaves (Block Eleven)
Cut 2- 2 $\frac{1}{2}$ " x 16 $\frac{1}{2}$ " for Prim Steps B and H
Cut 1- 2 $\frac{1}{2}$ " x 12 $\frac{1}{2}$ " for Prim Steps D
Cut 2- 2 $\frac{1}{2}$ " x 5 $\frac{1}{2}$ " for Prim Steps A and K



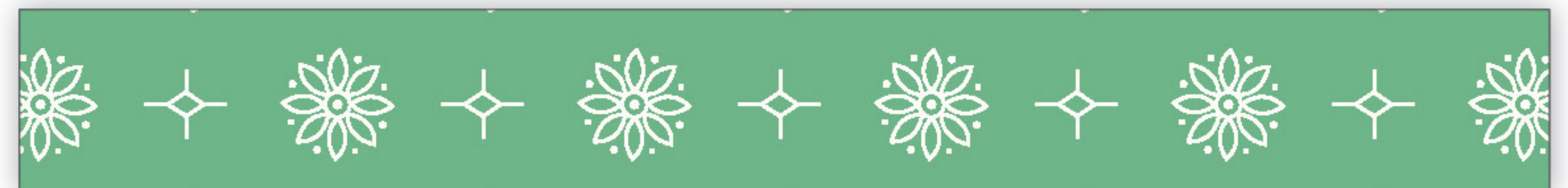
C9705 Melon Stripe

Cut 2- 2 $\frac{1}{2}$ " x 16 $\frac{1}{2}$ " for Prim Steps C and I
Cut 1- 2 $\frac{1}{2}$ " x 12 $\frac{1}{2}$ " for Prim Steps L
Cut 1- 2 $\frac{1}{2}$ " x 6 $\frac{1}{2}$ " for Prim Steps H
Cut 2- 2 $\frac{1}{2}$ " x 5 $\frac{1}{2}$ " for Prim Steps E and J



C9705 Sea Glass Stripe

Cut 1- 6 $\frac{1}{2}$ " x 9" for Piecing Basket* use K-18 (Block Two)
Cut 1- 5 $\frac{1}{2}$ " x 9" use K-28 for Lady Skirt (Block Eight)
Cut 1- 2" x 4" for Piecing Sleeve* use K-40 (Block Eight)
Cut 1- 2 $\frac{1}{2}$ " x 16 $\frac{1}{2}$ " for Sashing (Quilt Center)
Cut 2- 2 $\frac{1}{2}$ " x 6 $\frac{1}{2}$ " for Prim Steps C and L



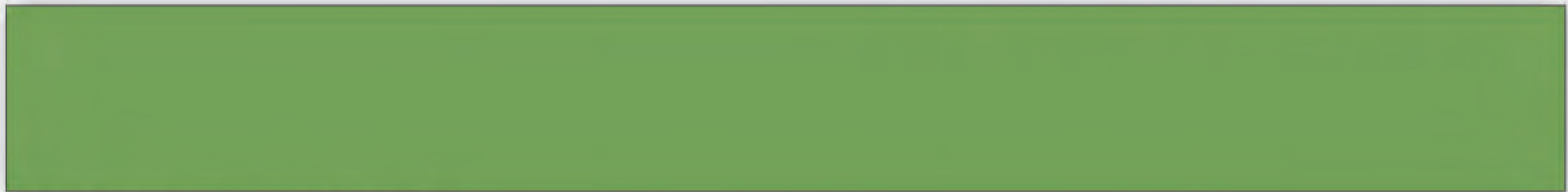
C9706 Alpine Vintage

Cut 1- 2 $\frac{1}{2}$ " x 5 $\frac{1}{2}$ " use K-6 for Church Door (Block Seven)
Cut 8- 3" x 3" for Corner Star Block
Cut 1- 2 $\frac{1}{2}$ " x 16 $\frac{1}{2}$ " for Sashing (Quilt Center)
Cut 1- 2 $\frac{1}{2}$ " x 16 $\frac{1}{2}$ " for Prim Steps G
Cut 1- 2 $\frac{1}{2}$ " x 12 $\frac{1}{2}$ " for Prim Steps C
Cut 2- 2 $\frac{1}{2}$ " x 5 $\frac{1}{2}$ " for Prim Steps B and F

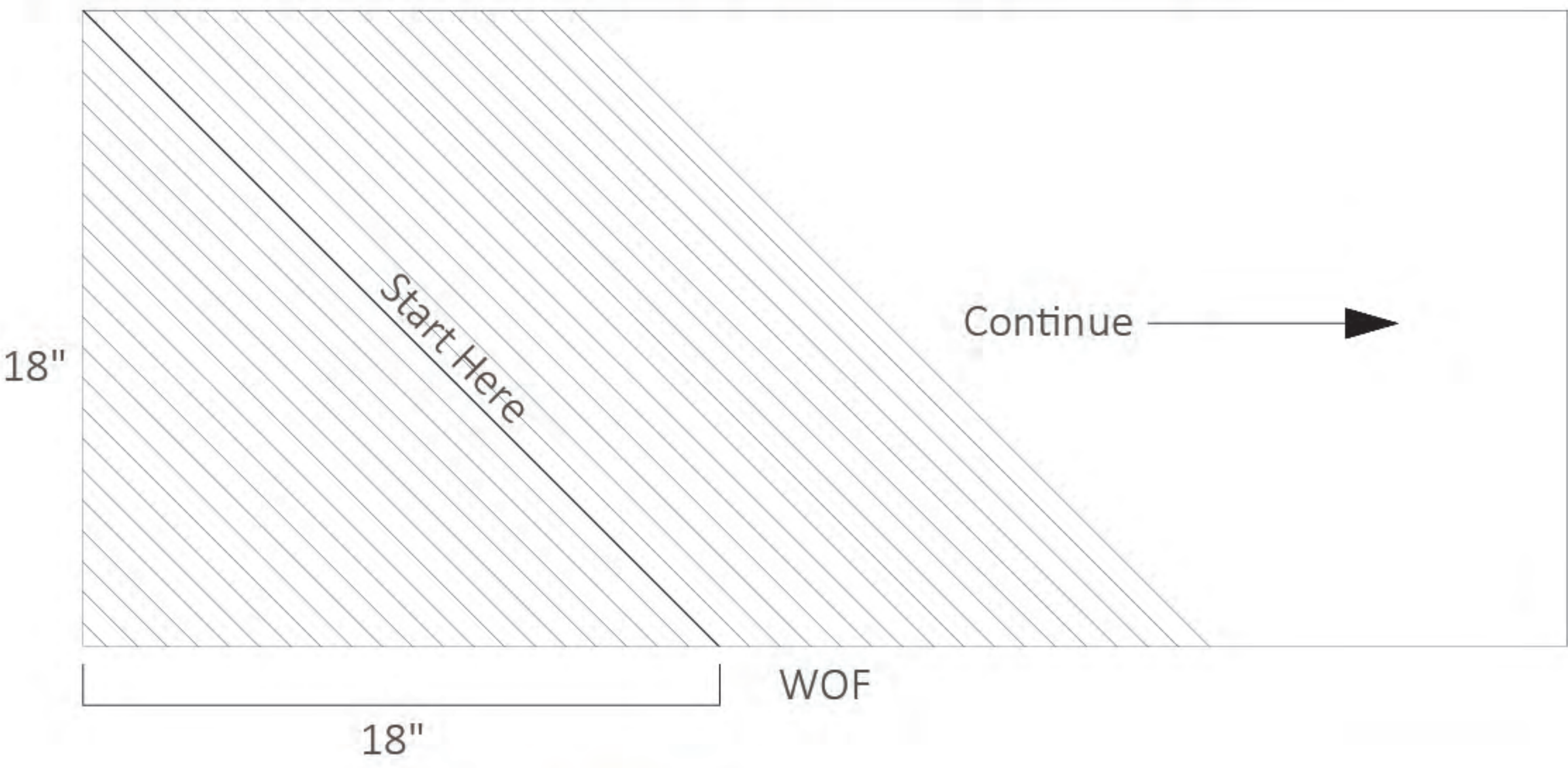
Prim Sew Along Guide

Fabric Cutting Guide

Always be mindful when cutting pieces from each fabric in your kit by cutting **LARGEST PIECES FIRST** as well as any width of fabric strips for the bias tape makers.



C120 Clover Solid
Cut 30- 5/8" Strips for 1/4" Curved Bias (All Stems)



C605 Latte Shabby
Cut 6- 19" x WOF" and Sub-cut:
12- 19" x 19" for Blocks
Cut 5- 3" x WOF" and 1- 1 3/4" x WOF and Sub-cut:
16- 3" x 5 1/2" (Piece A)
16- 3" x 3" (Piece B)
16- 1 3/4" x 3" (Piece C)
16- 1 3/4" x 1 3/4" (Piece D)

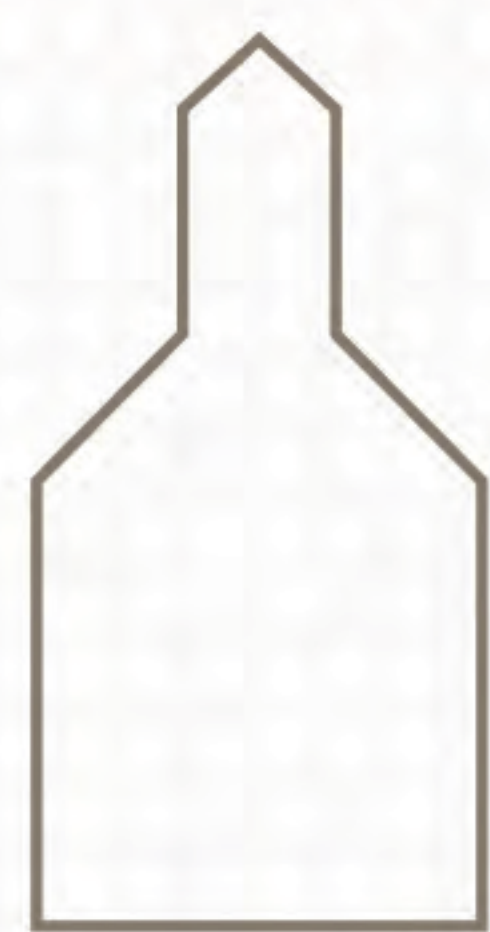


Cutting Guide for Prim Sew Simple Shapes

Use when cutting fabric and sew-in interfacing
for the Prim Sew Along



K-1
6" x 10½"
Cut 1



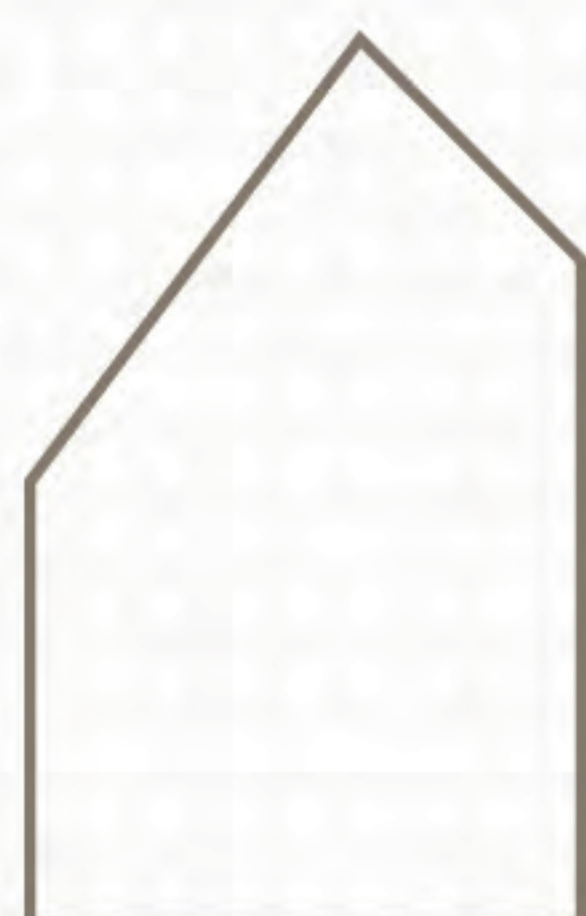
K-2
6½" x 12½"
Cut 1



K-3
4½" x 6½"
Cut 2



K-4
2½" x 6½"
Cut 2 (trace 1 reversed)



K-5
5½" x 9"
Cut 1



K-6
2½" x 5½"
Cut 1



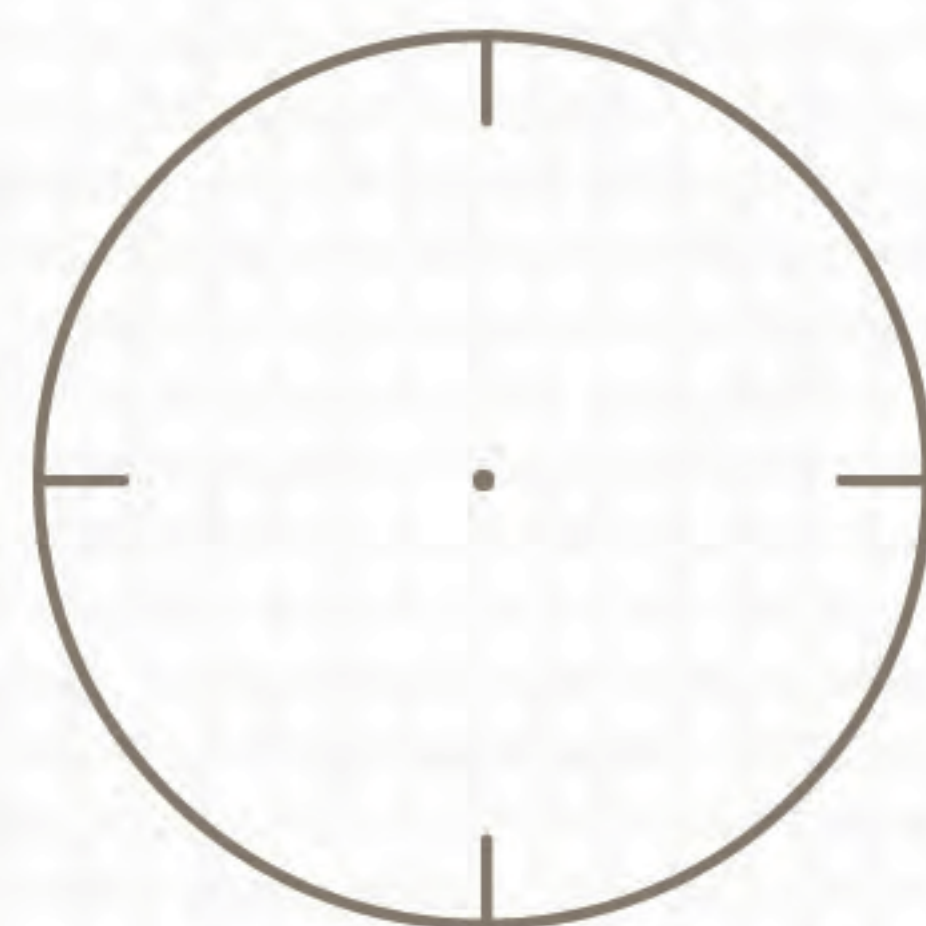
K-7
1½" x 4½"
Cut 7



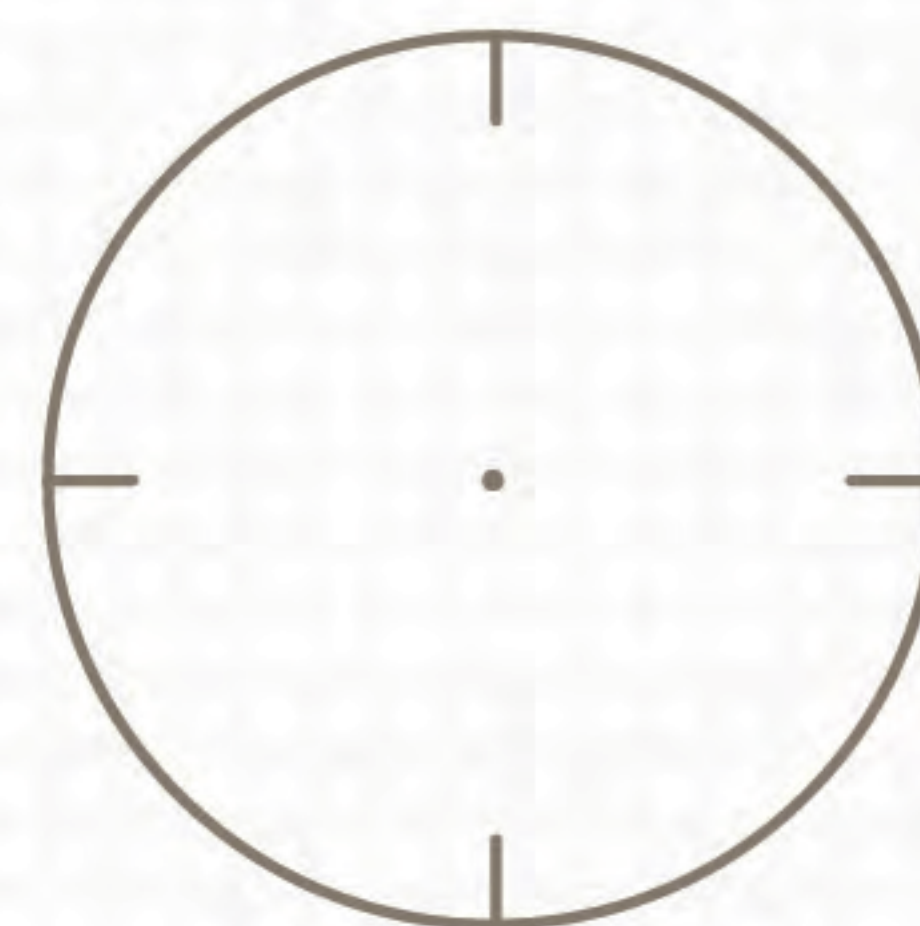
K-8
1½" x 3½"
Cut 8



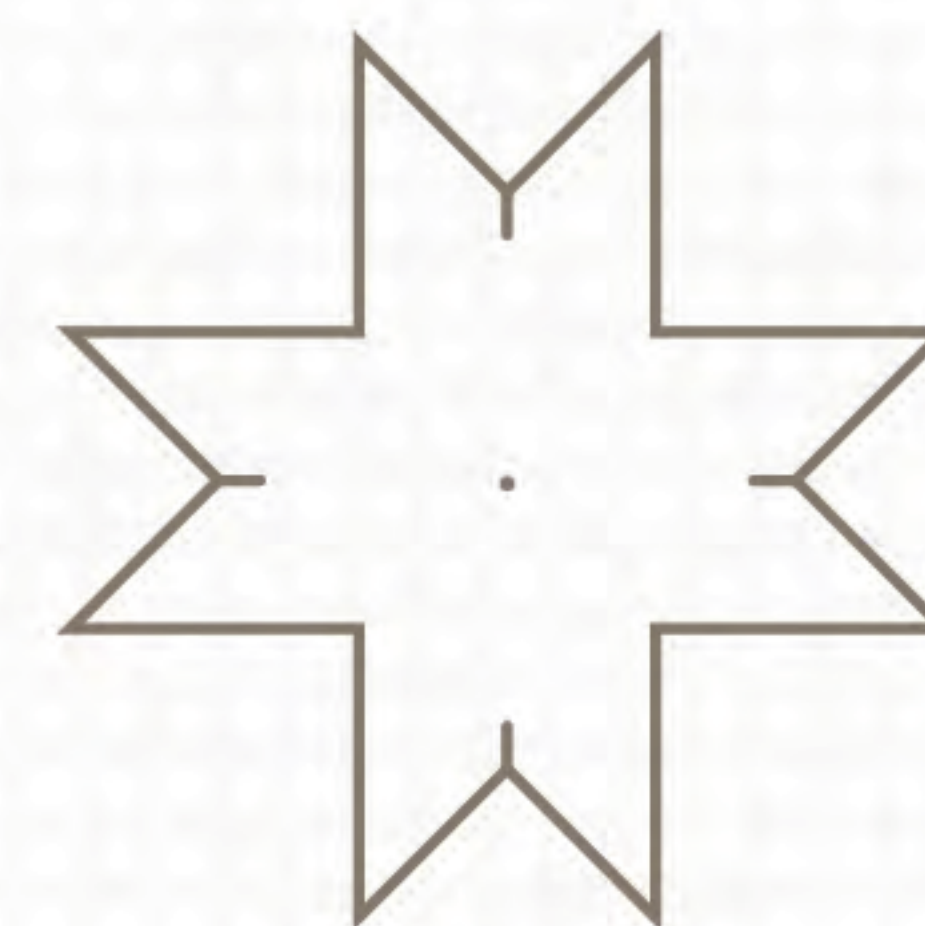
K-9
3" x 3"
Cut 2



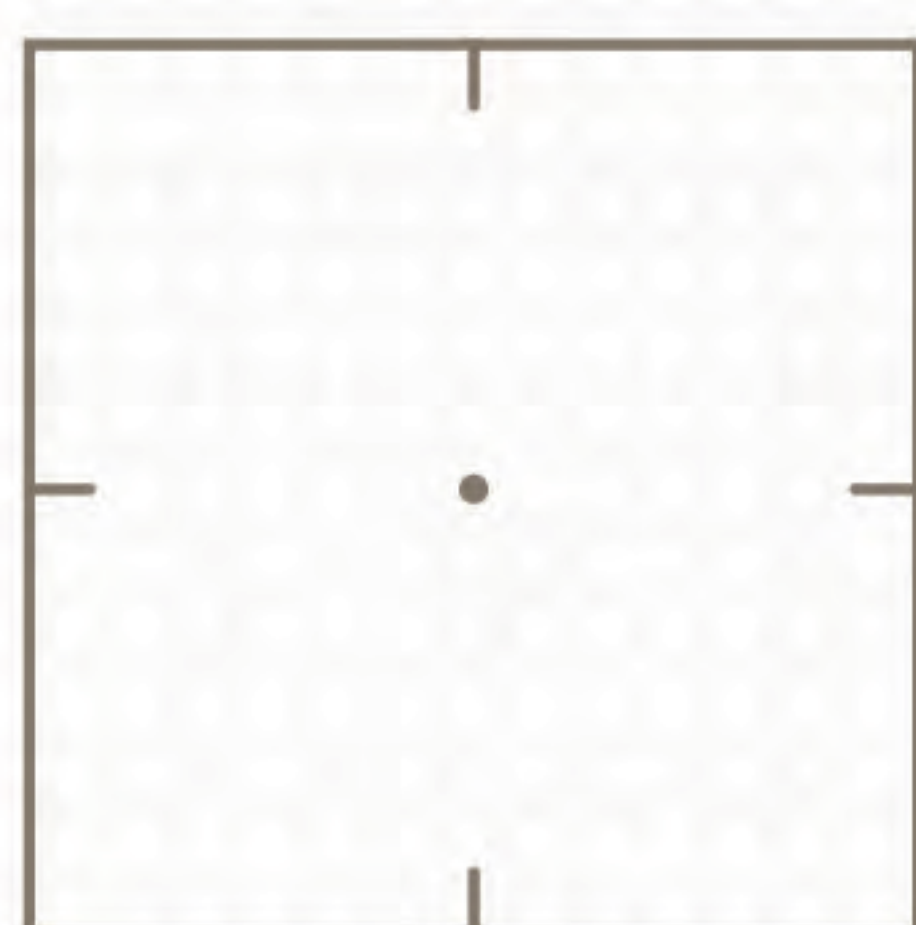
K-10
2" x 2"
Cut 12



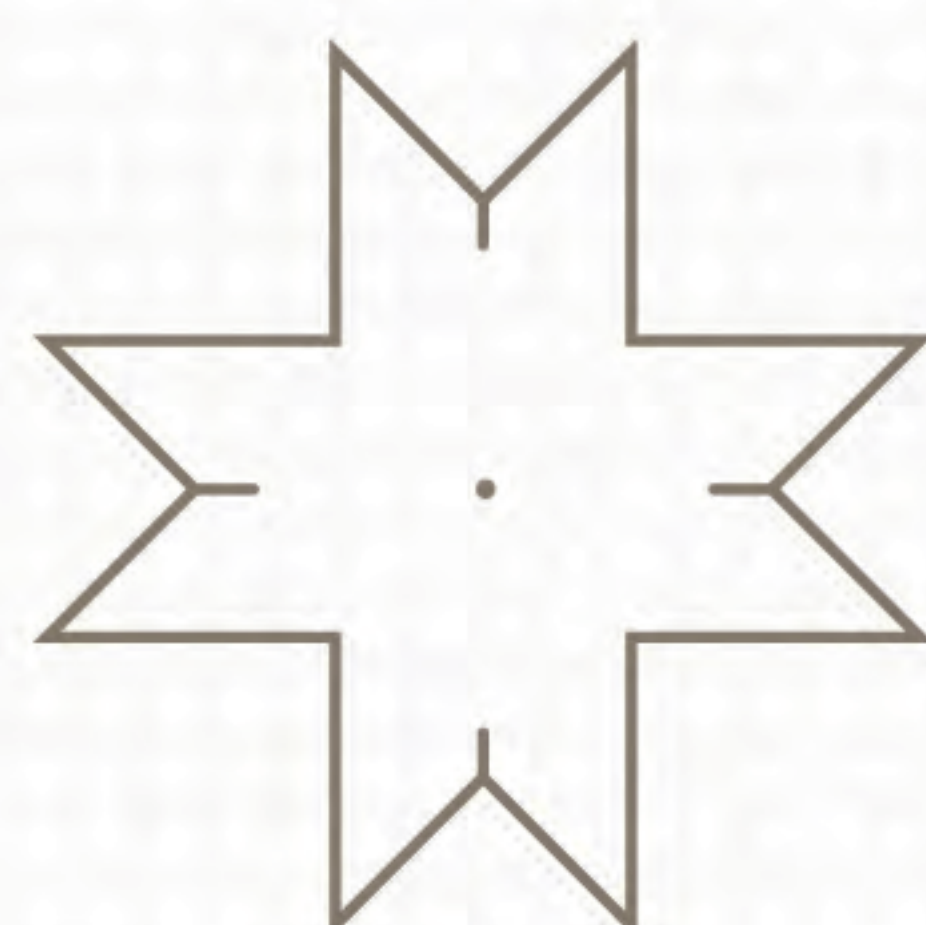
K-11
2" x 2"
Cut 15



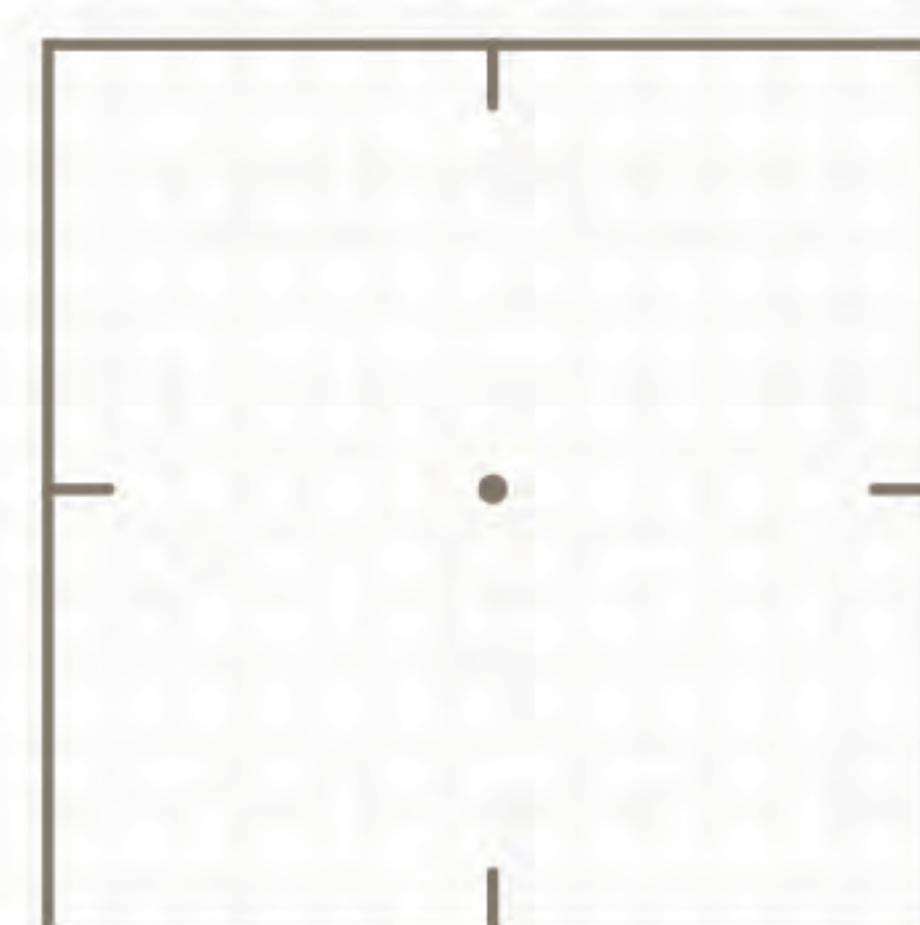
K-12
5" x 5"
Cut 12



K-13
2½" x 2½"
Cut 12



K-14
3½" x 3½"
Cut 7



K-15
2" x 2"
Cut 7



K-16
2" x 6½"
Cut 2

Cutting Guide for Prim Sew Simple Shapes

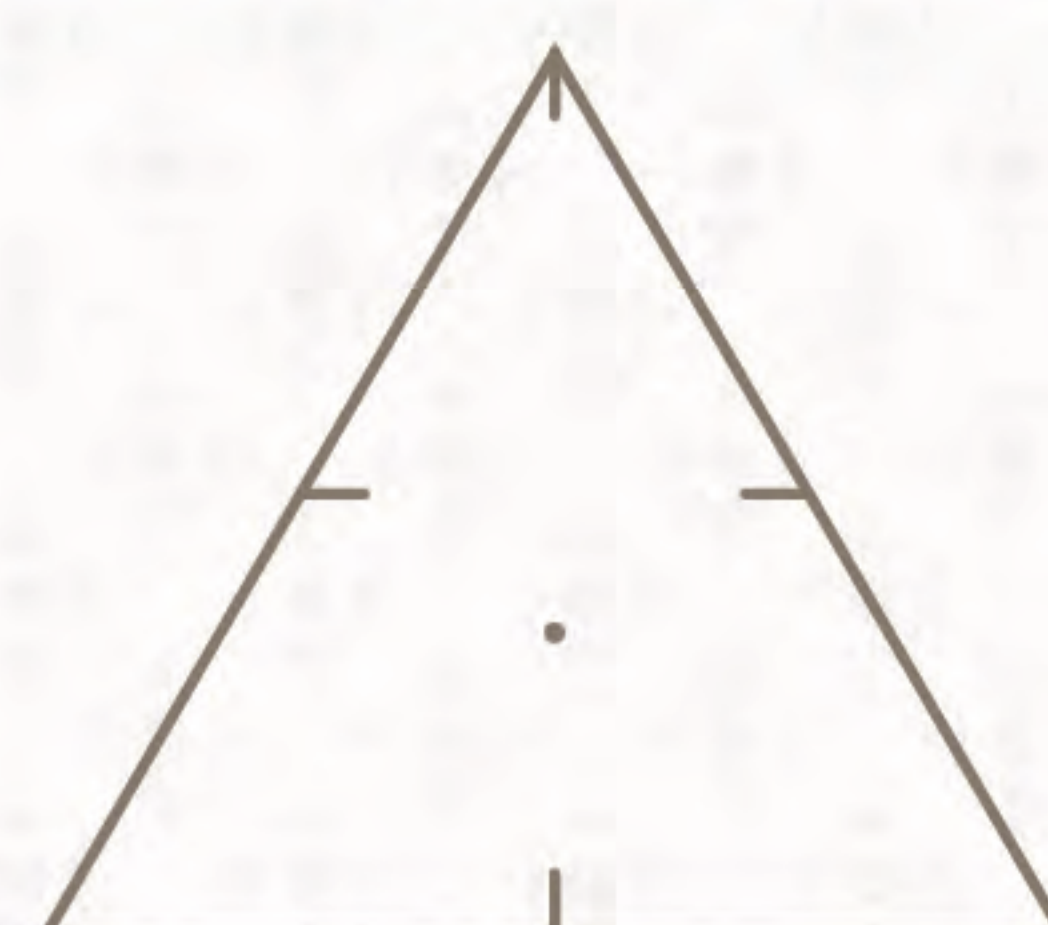
Use when cutting fabric and sew-in interfacing
for the Prim Sew Along



K-17
4" x 7"
Cut 1



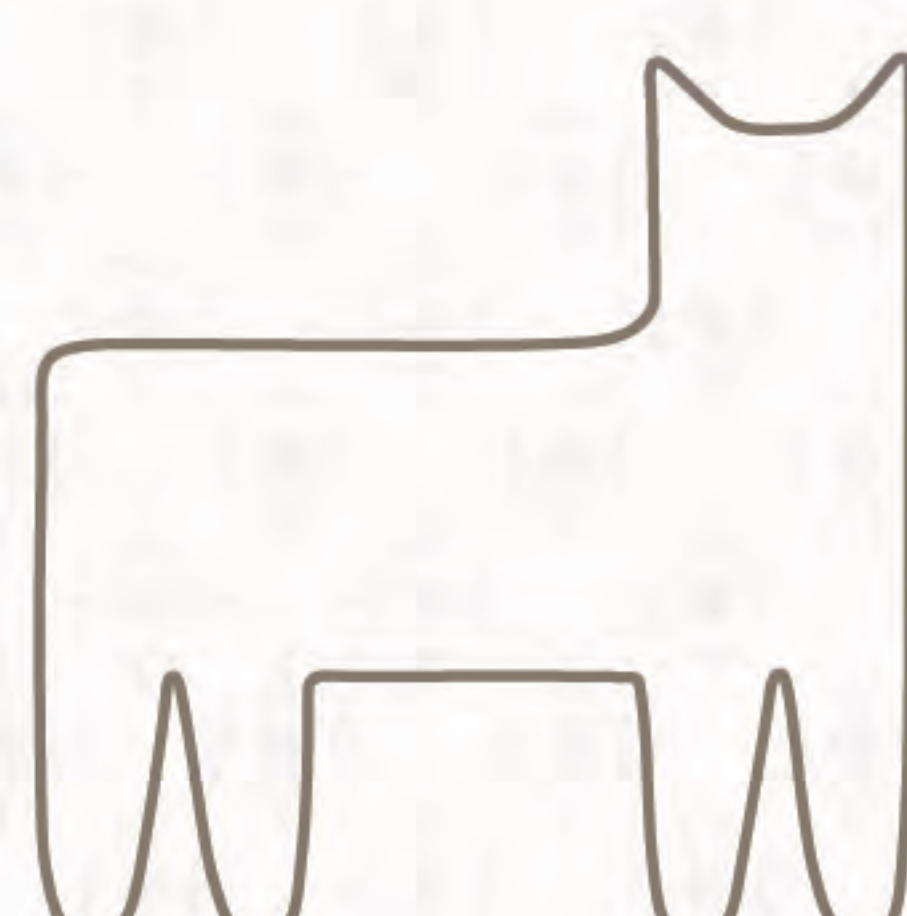
K-18
6½" x 9"
Cut 1



K-19
3½" x 4"
Cut 1



K-20
2½" x 3½"
Cut 1



K-21
9½" x 9½"
Cut 1



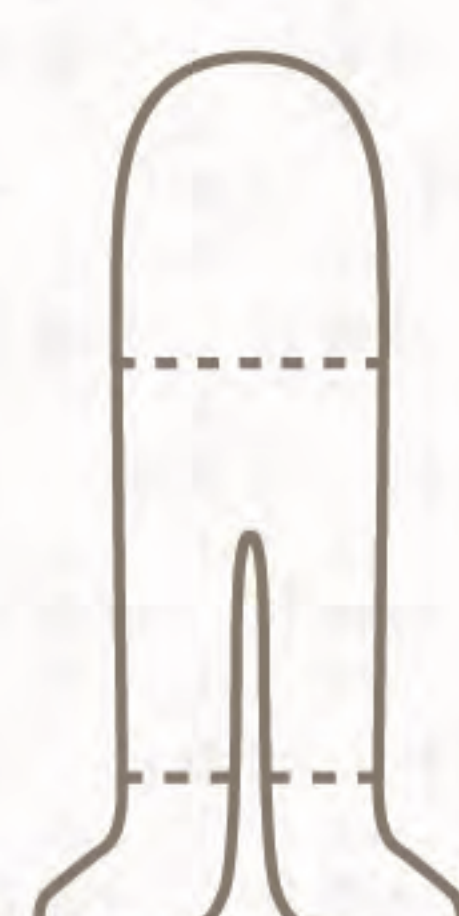
K-22
4½" x 7½"
Cut 1



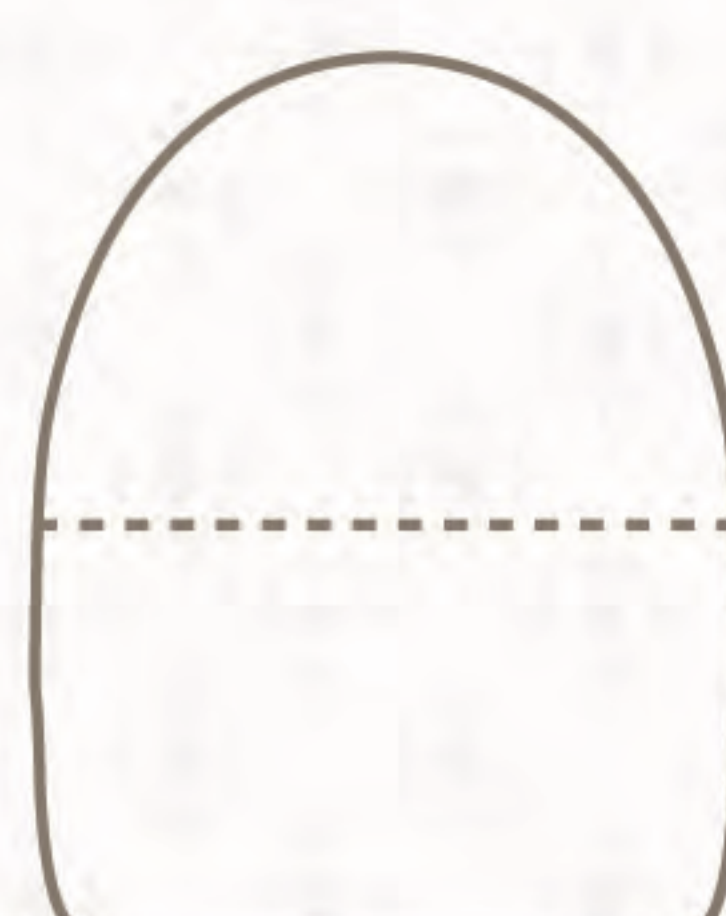
K-23
4½" x 8"
Cut 1



K-24
3½" x 4½"
Cut 1



K-25
6" x 11½"
Cut 1



K-26
3" x 3½"
Cut 2



K-27
2" x 6"
Cut 3



K-28
5½" x 9"
Cut 2



K-29
3½" x 5½"
Cut 3



K-30
5" x 9½"
Cut 1



K-31
3" x 4½"
Cut 1



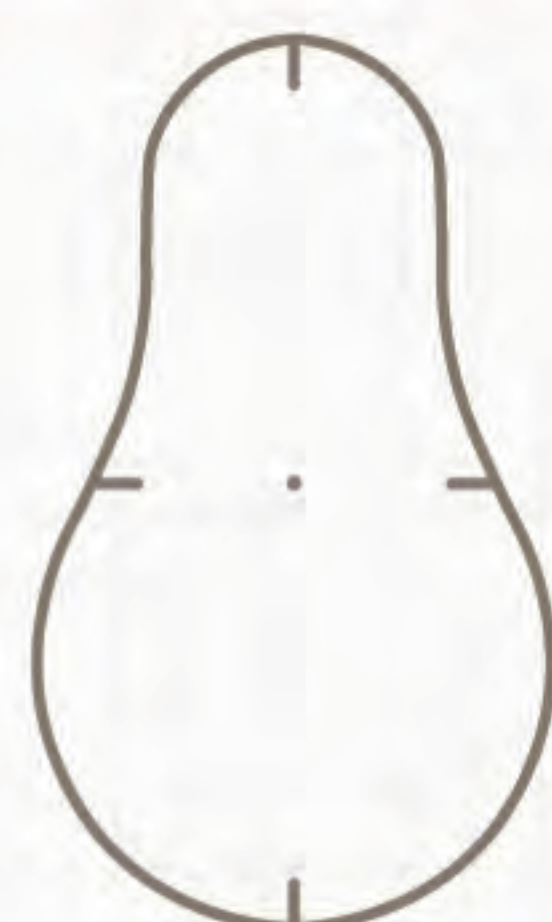
K-32
3½" x 5"
Cut 3

Cutting Guide for Prim Sew Simple Shapes

Use when cutting fabric and sew-in interfacing
for the Prim Sew Along



K-33
2½" x 3½"
Cut 2



K-34
3" x 5"
Cut 2



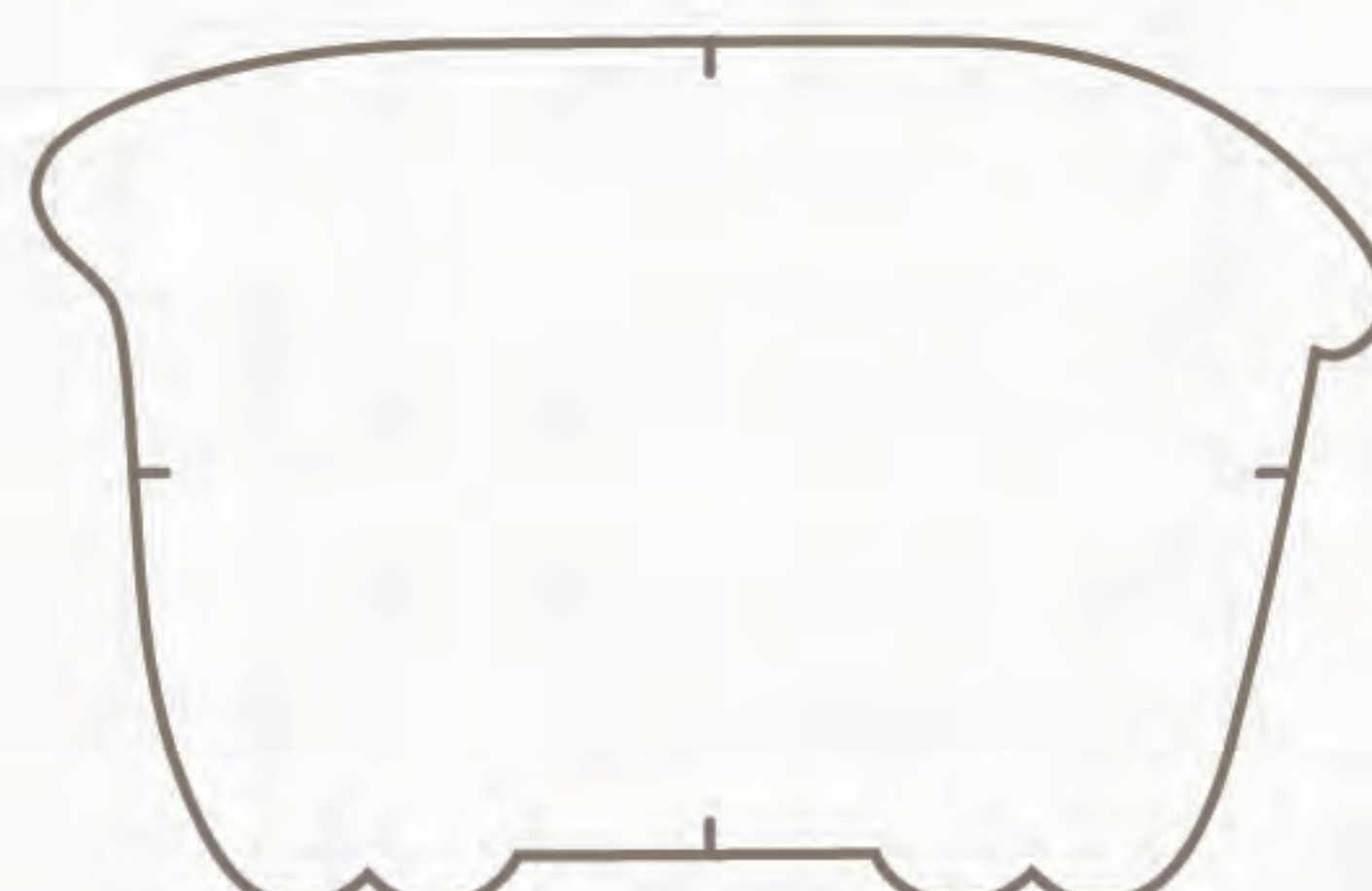
K-35
3½" x 4"
Cut 3



K-36
4" x 6"
Cut 1



K-37
3½" x 10½"
Cut 1



K-38
6½" x 9½"
Cut 1



K-39
5½" x 8"
Cut 1



K-40
2" x 4"
Cut 5



K-41
4½" x 6"
Cut 1



K-42
3" x 6½"
Cut 2



K-43
2" x 3½"
Cut 11



K-44
2½" x 4½"
Cut 3 (trace 1 reversed)



K-45
2" x 2½"
Cut 17



K-46
3" x 4"
Cut 1



K-47
2½" x 3½"
Cut 2



K-48
2" x 4½"
Cut 1

Cutting Guide for Prim Sew Simple Shapes

Use when cutting fabric and sew-in interfacing
for the Prim Sew Along



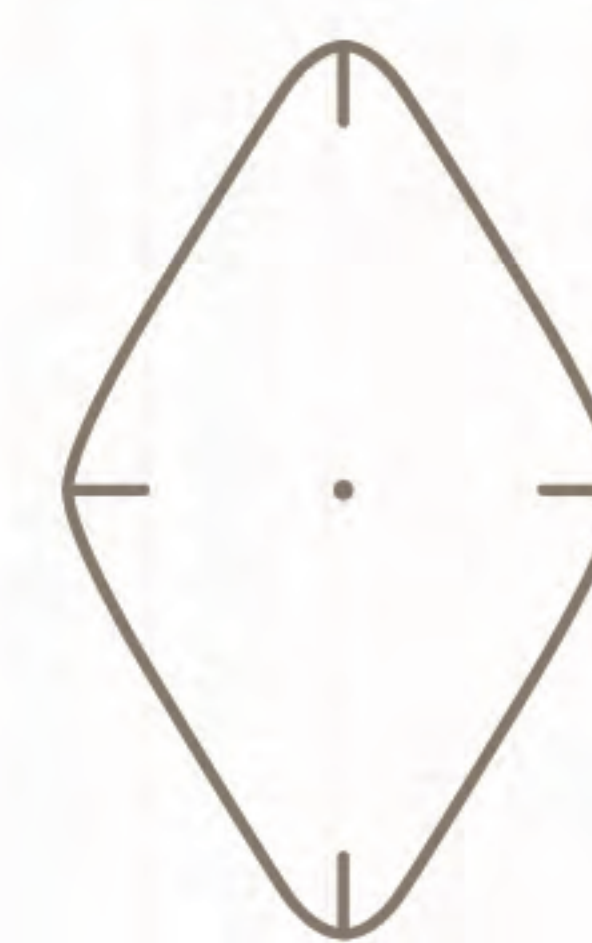
K-49
3" x 6"
Cut 1



K-50
2" x 6"
Cut 2



K-51
2" x 4"
Cut 27



K-52
2" x 3"
Cut 4



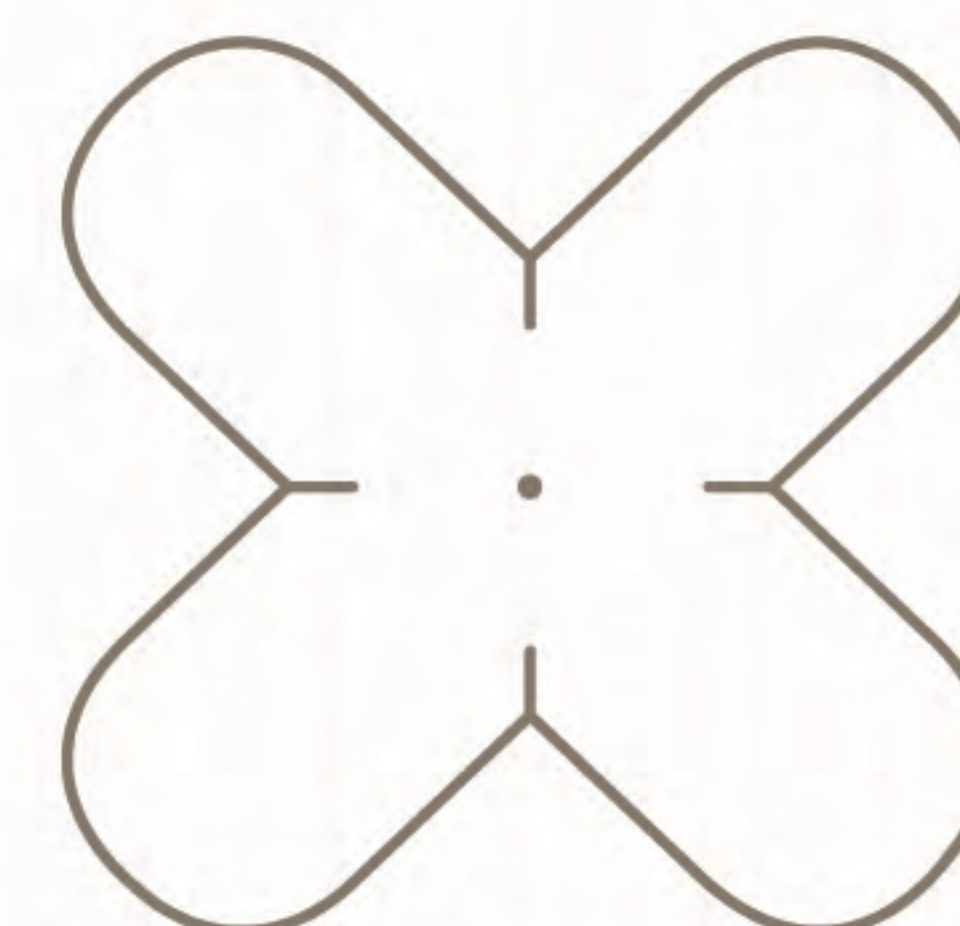
K-53
2" x 2½"
Cut 10



K-54
3" x 3"
Cut 7



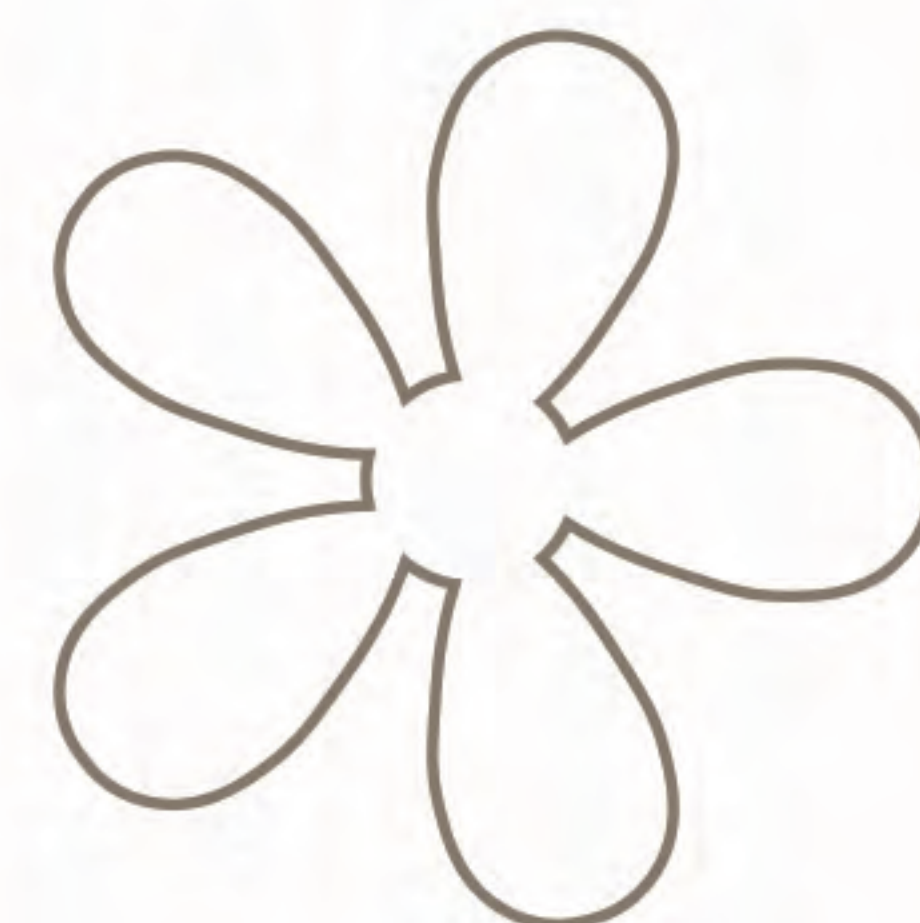
K-55
2½" x 4"
Cut 2



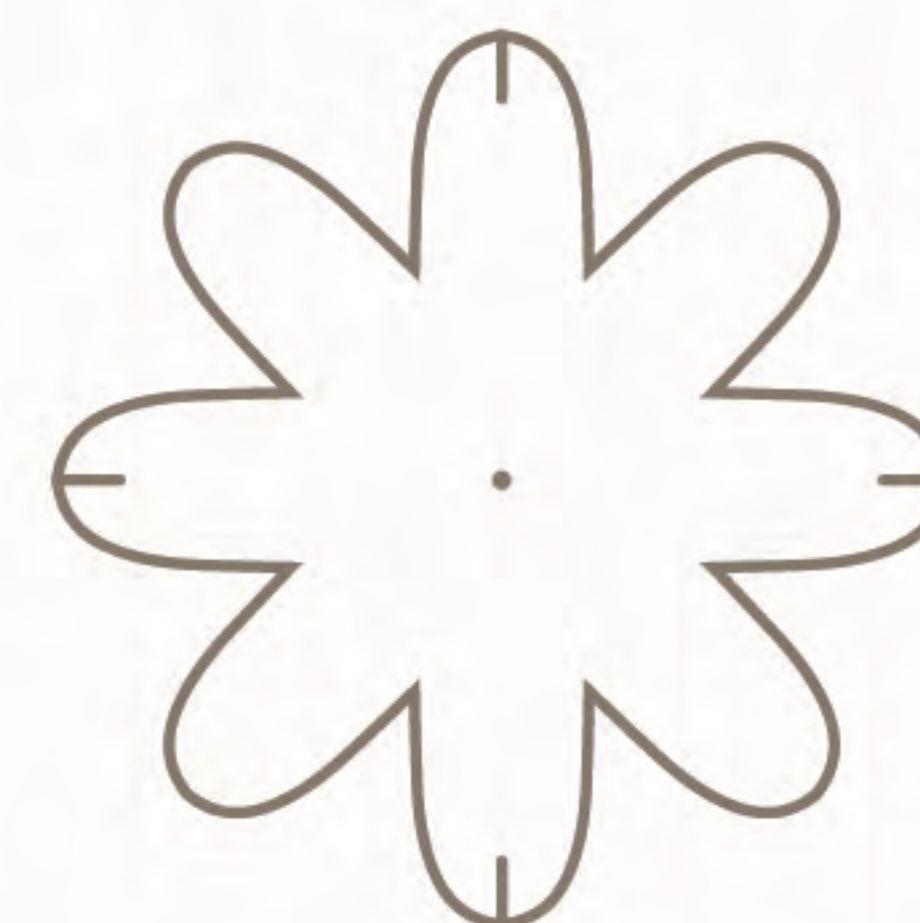
K-56
2½" x 2½"
Cut 5



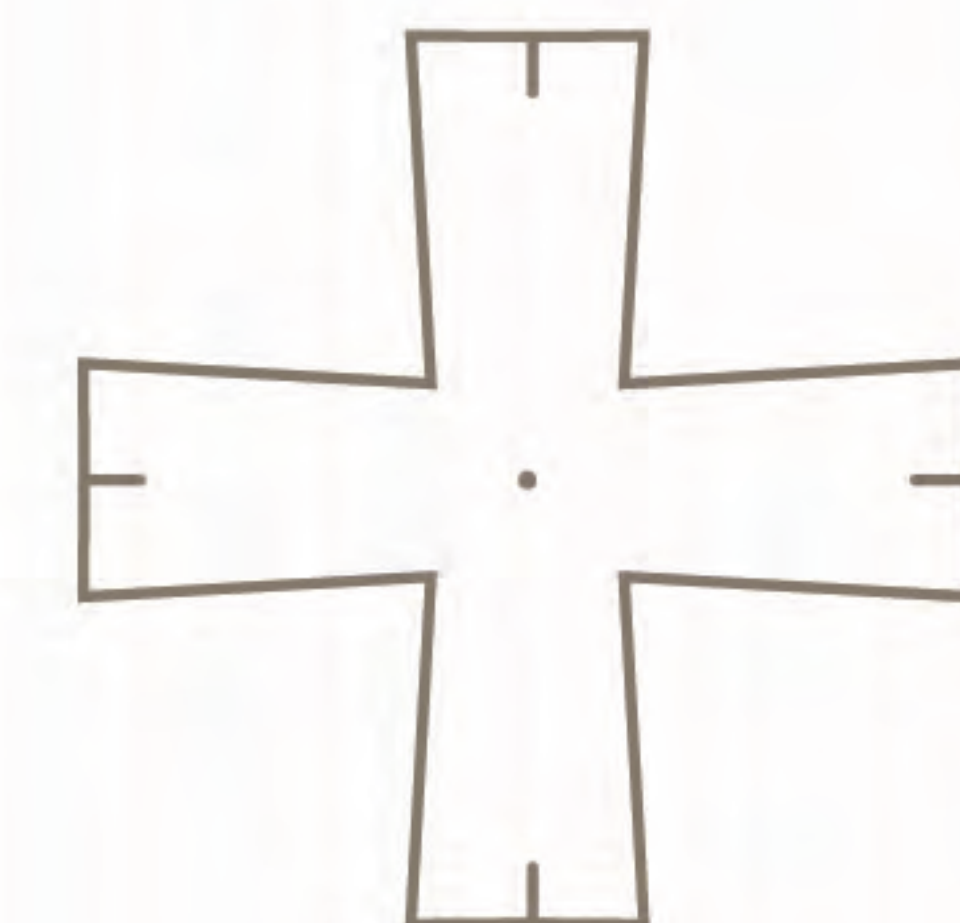
K-57
2½" x 3"
Cut 8



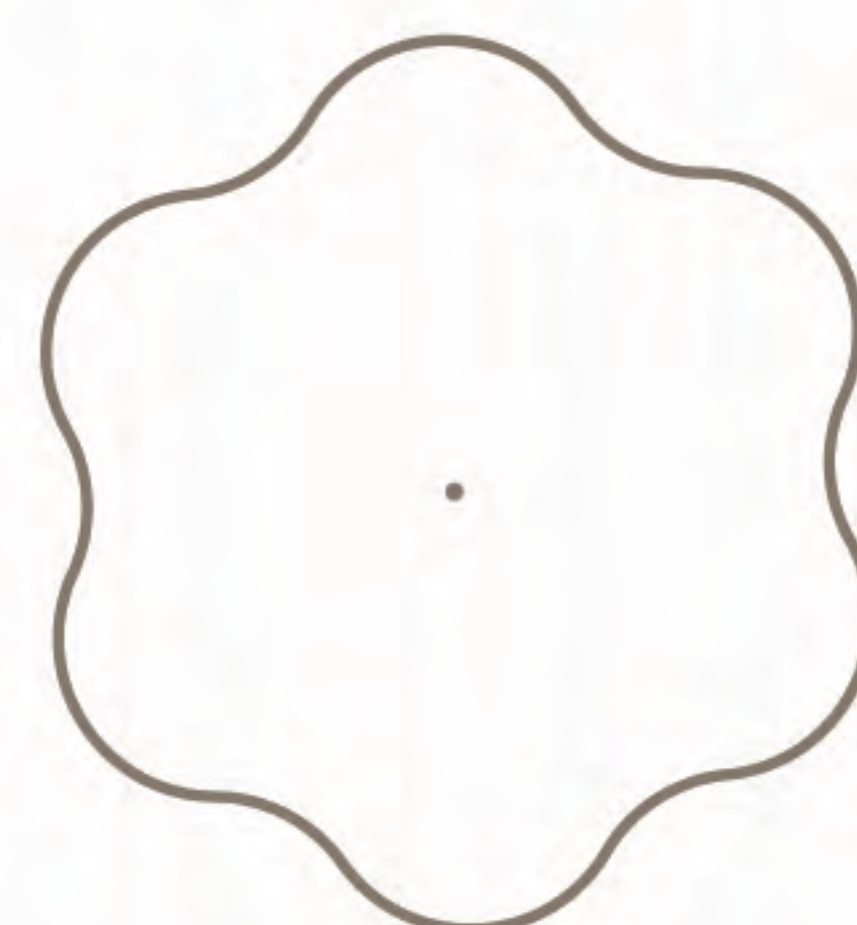
K-58
4½" x 4½"
Cut 4



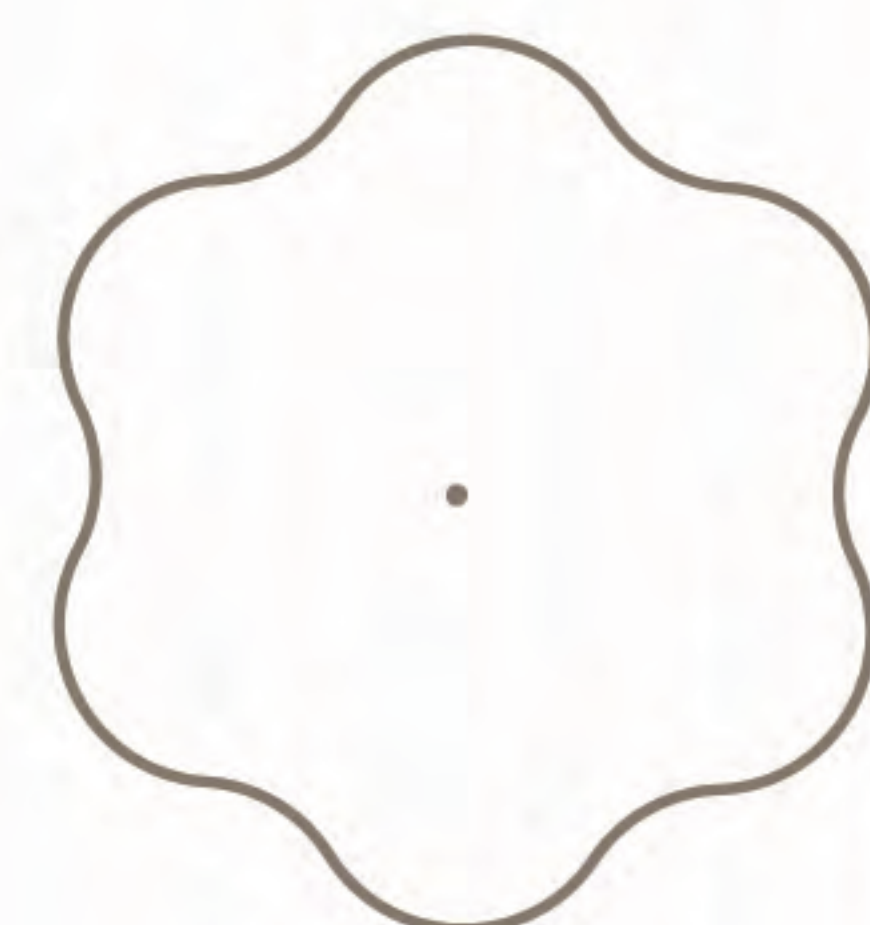
K-59
3½" x 3½"
Cut 5



K-60
4" x 4"
Cut 8



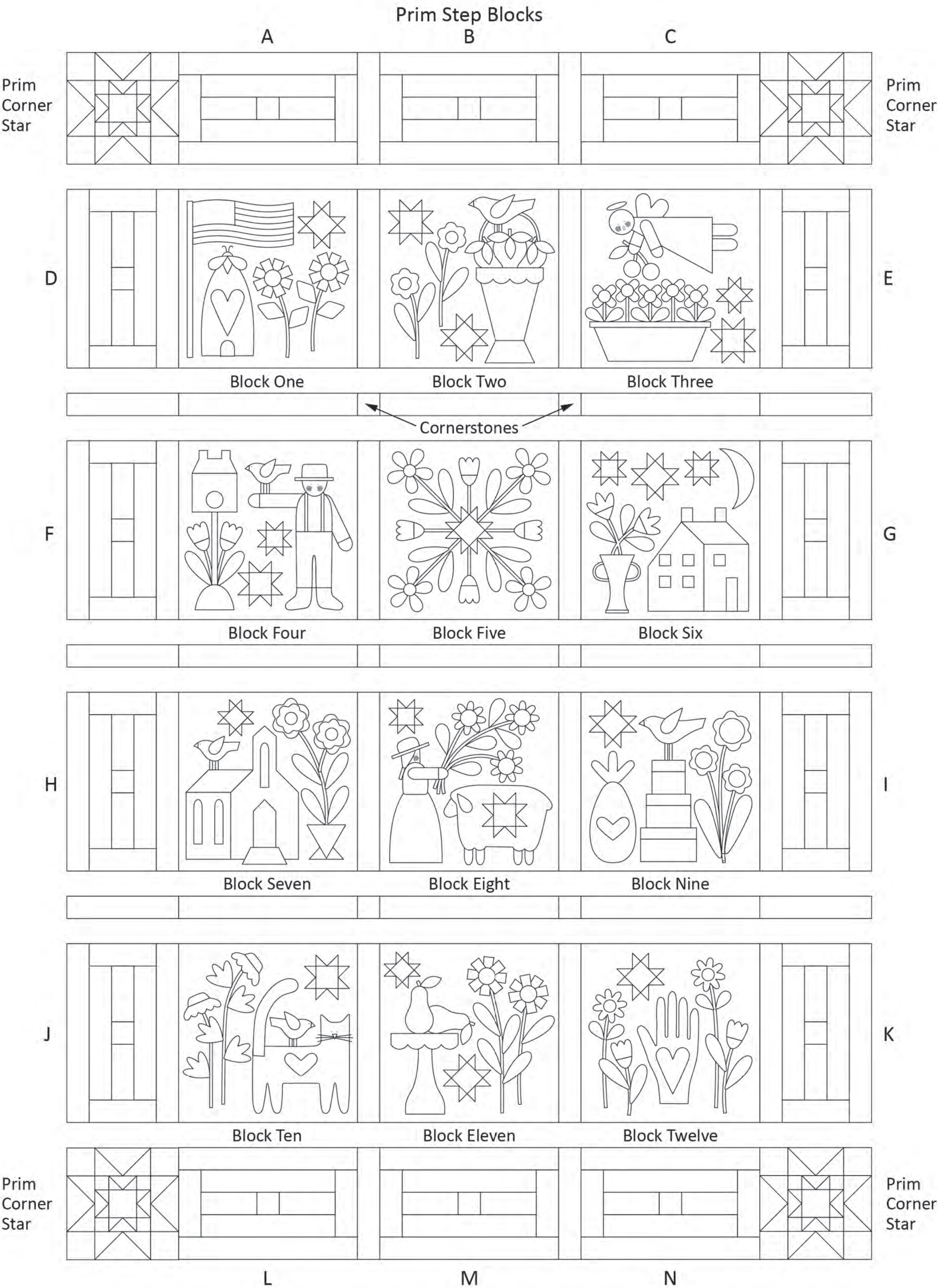
K-61
4" x 4"
Cut 3



K-62
3" x 3"
Cut 6

Prim Sew Along Guide

Prim Quilt Layout



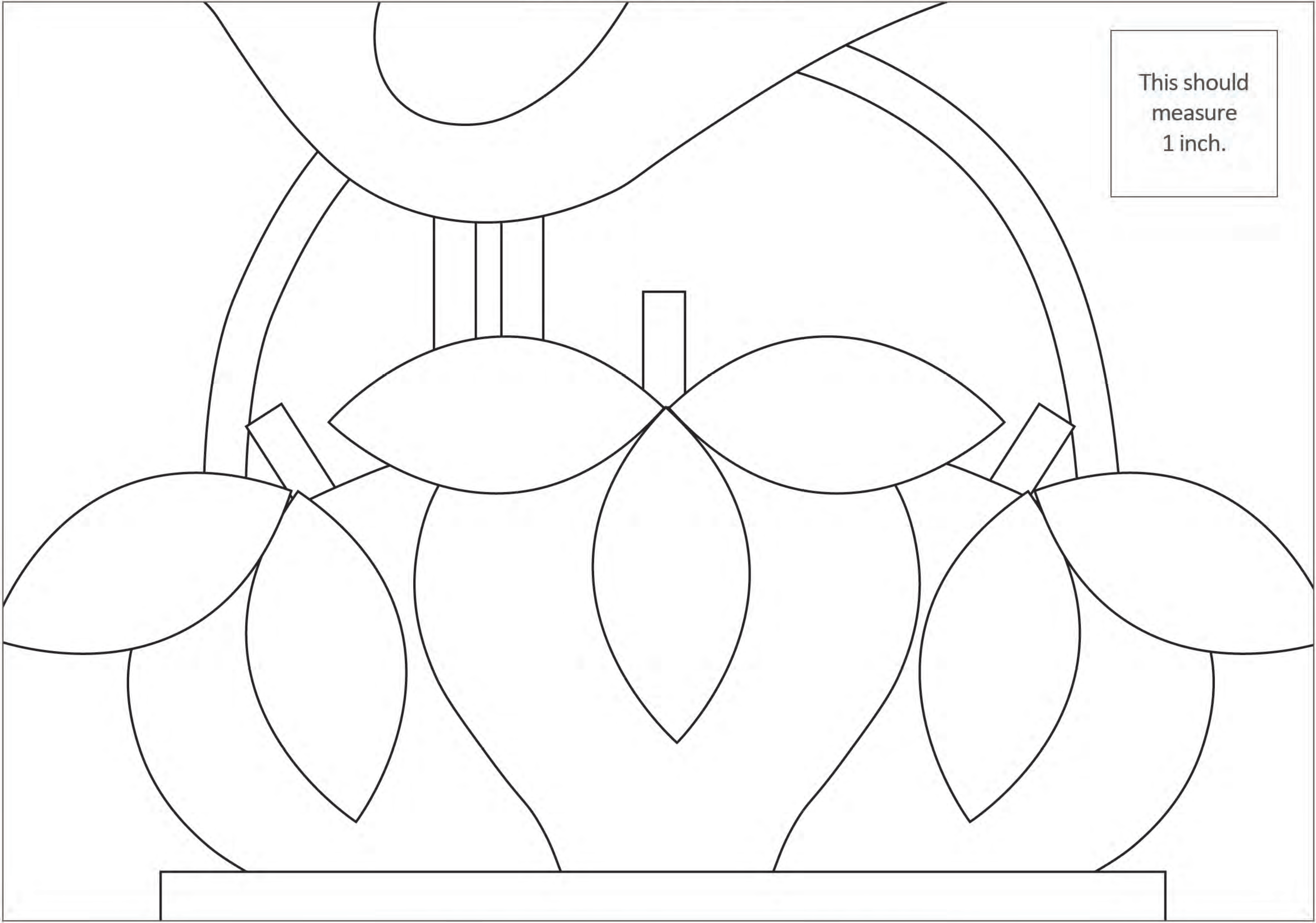
Prim Sew Along Guide

Strip Cutting Guide for Bias Tape Makers

For ¼"	For ½"
Bias Tape Maker	Bias Tape Maker
...	...
Cut	Cut
⅝" Wide	1" Wide

Placement Guide

Block Two - Basket Handle

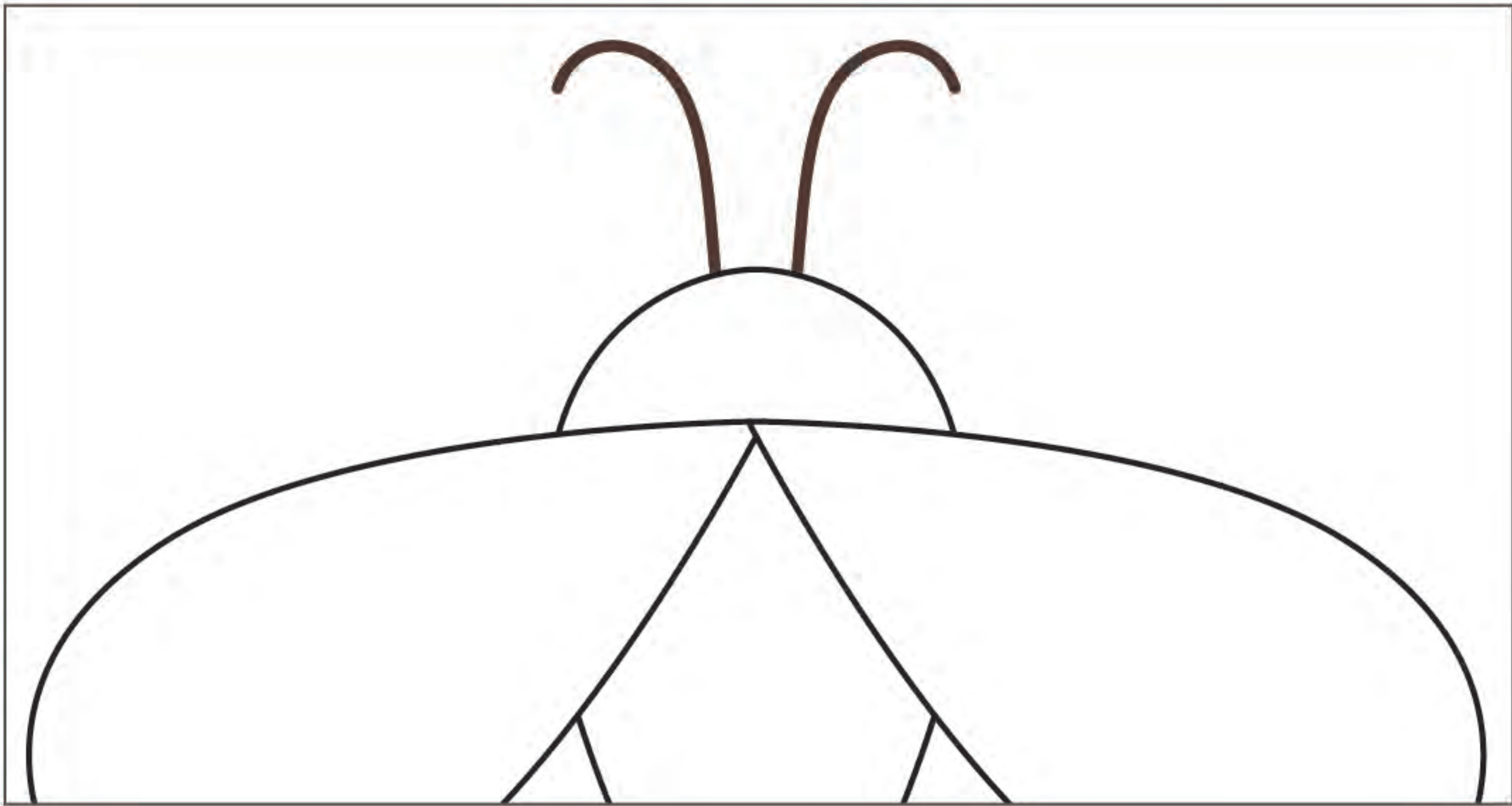


Use Lori's Easy Trace Light Box for placement of Basket Handle.

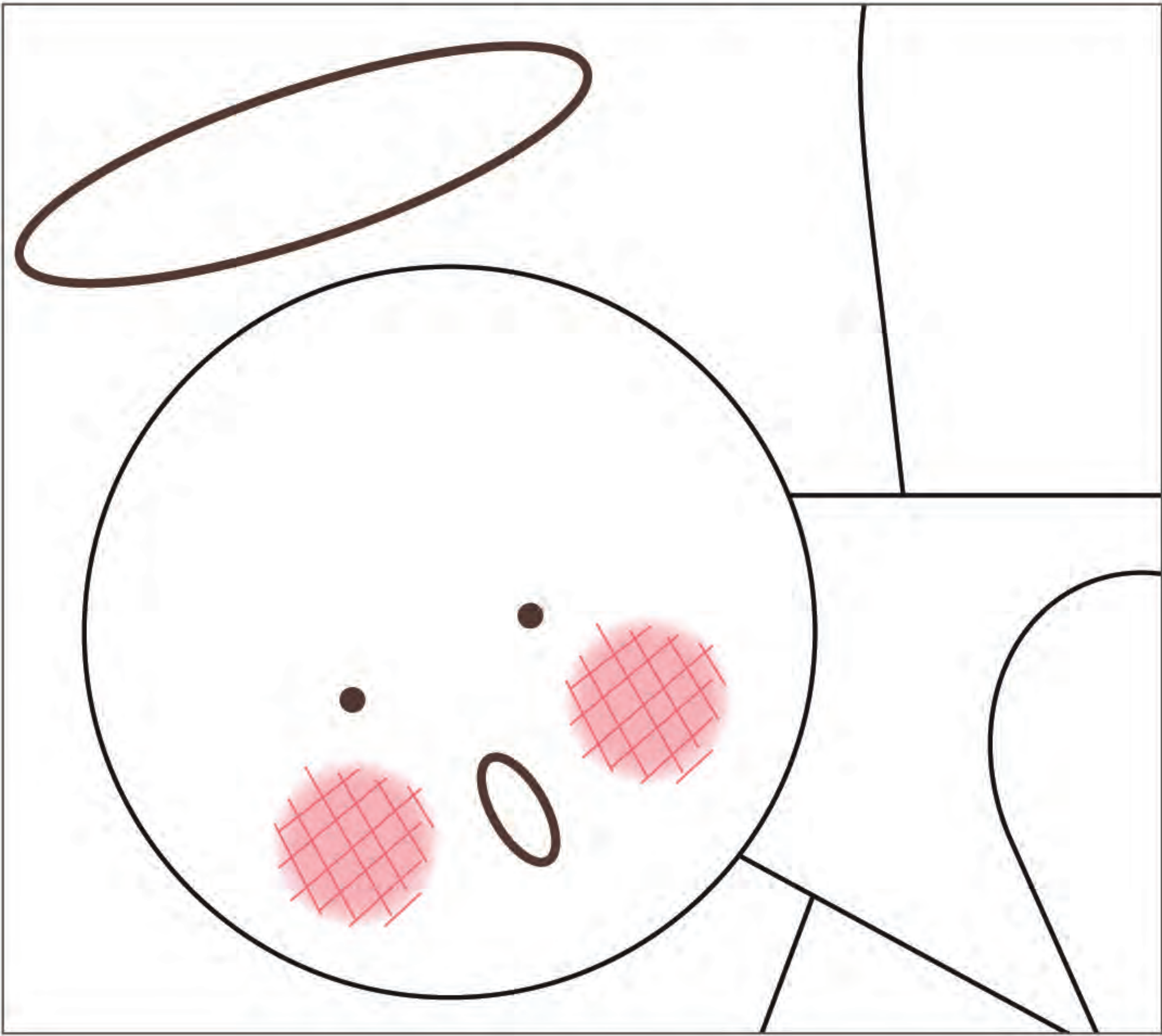
Prim Sew Along Guide

Embroidery Guide

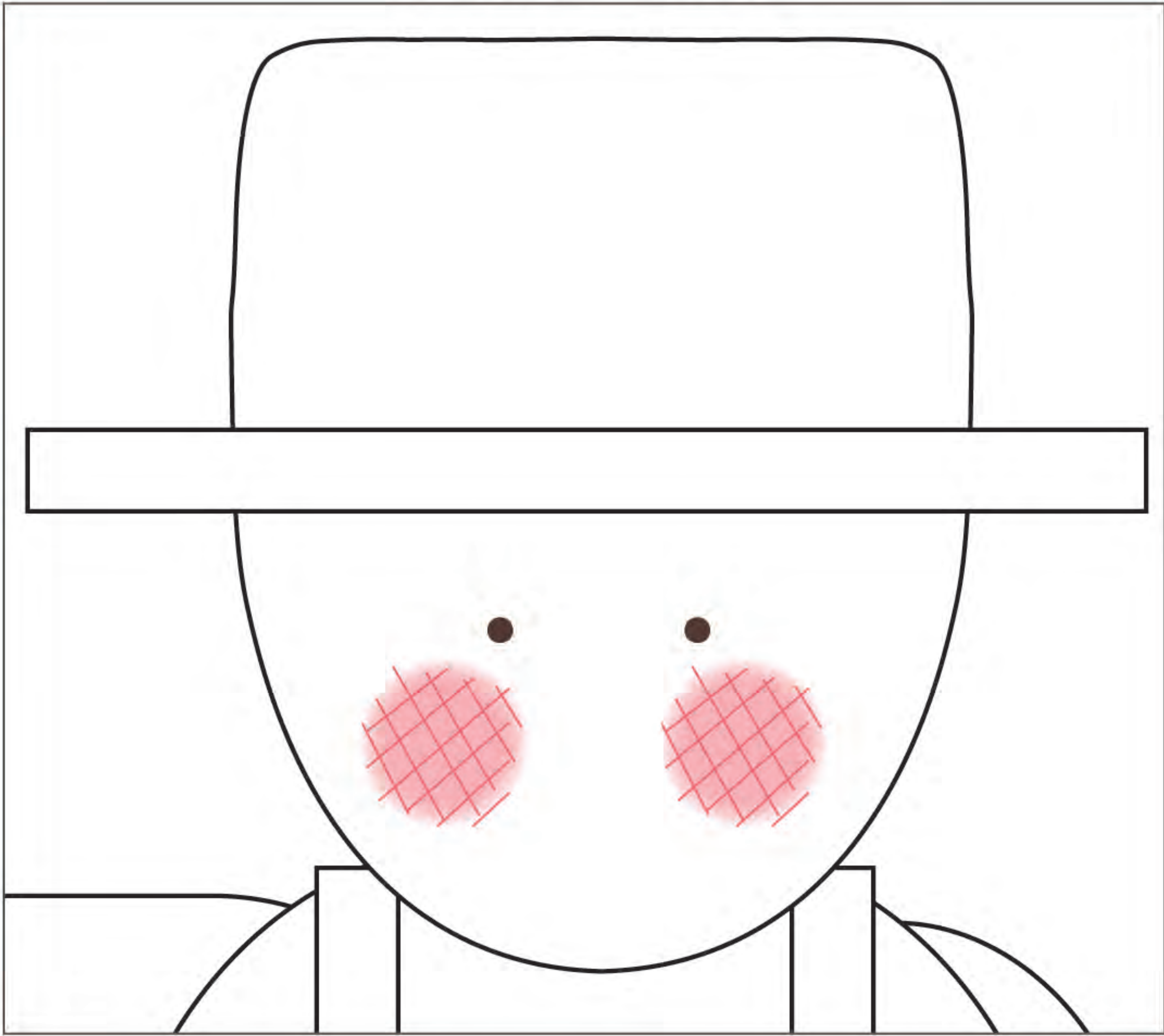
Block One - Bee



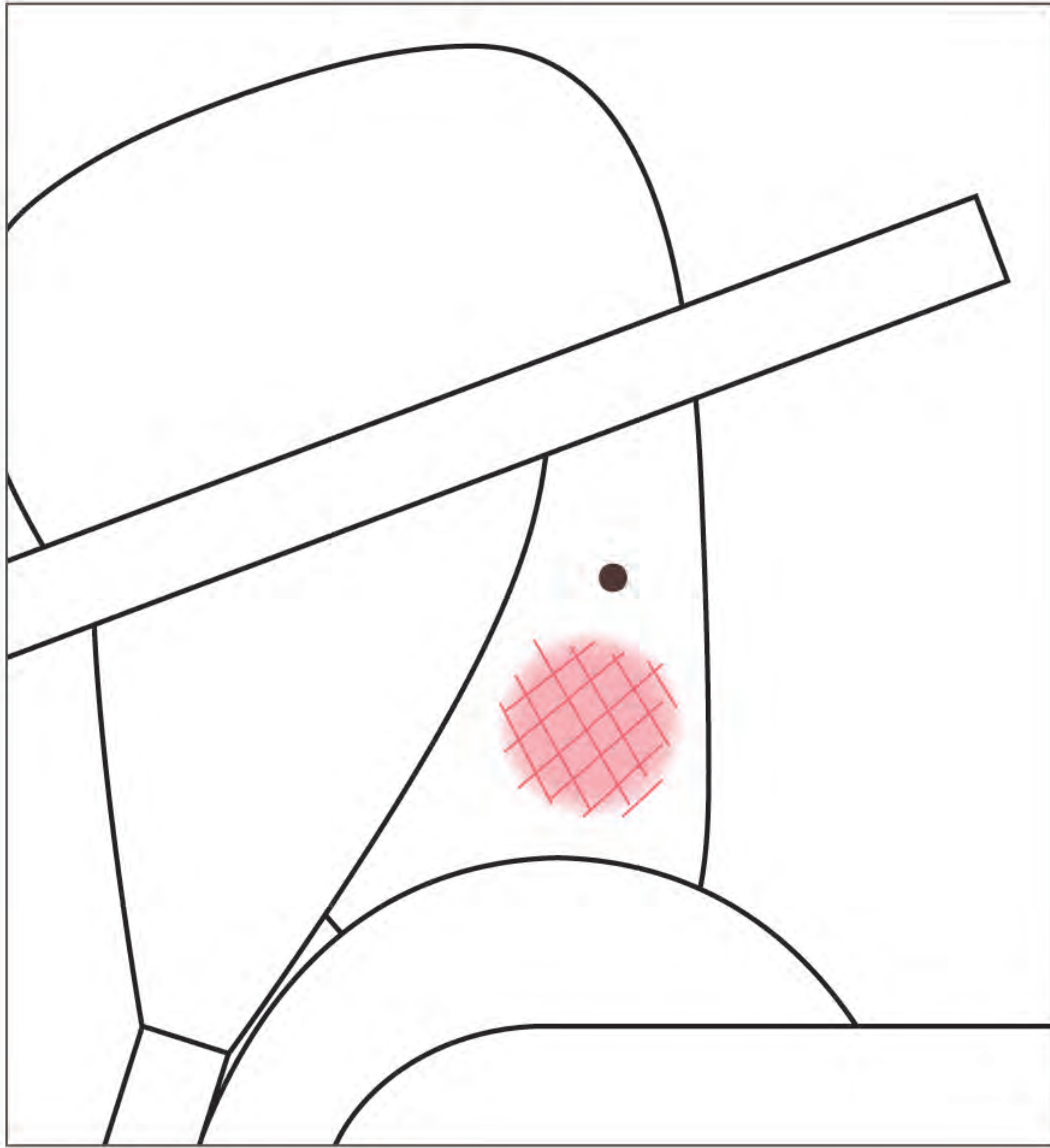
Block Three - Angel



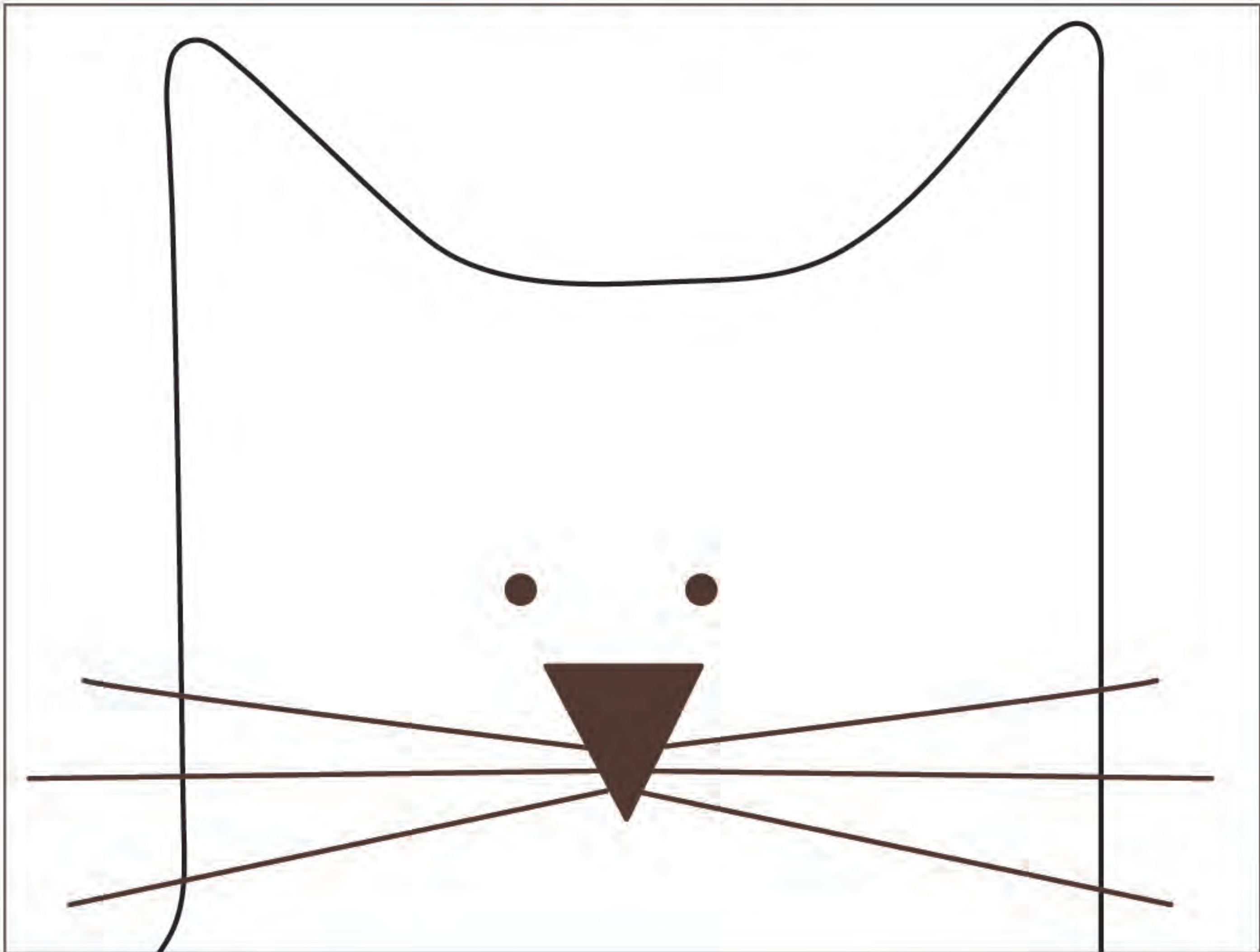
Block Four - Farmer



Block Eight - Farm Girl



Block Ten - Cat



Use Lori's Easy Trace Light Box to trace the embroidery lines.



Optional:
Apply blush with a cotton swab.

This should measure 1 inch.



Prim notes...



