

MYSTERY Evergreen

Fat Quarter Shop Exclusive Stitch Along



Cross Stitch Information

Stitch Count 109w x 109h

Finished Size 7.875" x 7.875"

Cloth Natural 14 Count Aida
by Wichelt Imports
(SKU# 357-50A)

Thread 2 strands of Classic
Colorworks or DMC

Model Finishing

Model was stitched using Classic
Colorworks thread.

Finished using Priscilla's Pretty Plaids
fabric (SKU# 9300-8), Stitching
Housewives Stripes fabric (SKU# 9827-8),
Stitching with the Housewives Red 1 1/2"
Buffalo Plaid Wired Ribbon and Stitching
with the Housewives Red 1 1/2" Dashed
Stripe Wired Ribbon on the Brown &
White Beaded Edge Wood Wall Decor
(SKU# 2095610) from Hobby Lobby.

Additional Supplies Available

- Evergreen Classic Colorworks Thread Pack
- Enchanted Ornament Enamel Charm
- Festively Gift Wrapped Enamel Needle Minder
- Berry Mad for Plaid Project Bag by It's Sew Emma

Thread

Color	Symbols	Classic Colorworks	Skeins	DMC	Skeins
Red	↗	Ribbon Red	1	321	1
Dark Pink	+	Cherry Tomato	1	3833	1
Light Pink	T	Cobbled Peach	2	761	1
Yellow	★	Queen Bee	1	676	1
Light Green	●	Little Sprout	2	3346	2
Dark Green	✕	Steamed Broccoli	2	3345	1

#EvergreenMysterySAL

1-866-826-2069 · www.FatQuarterShop.com

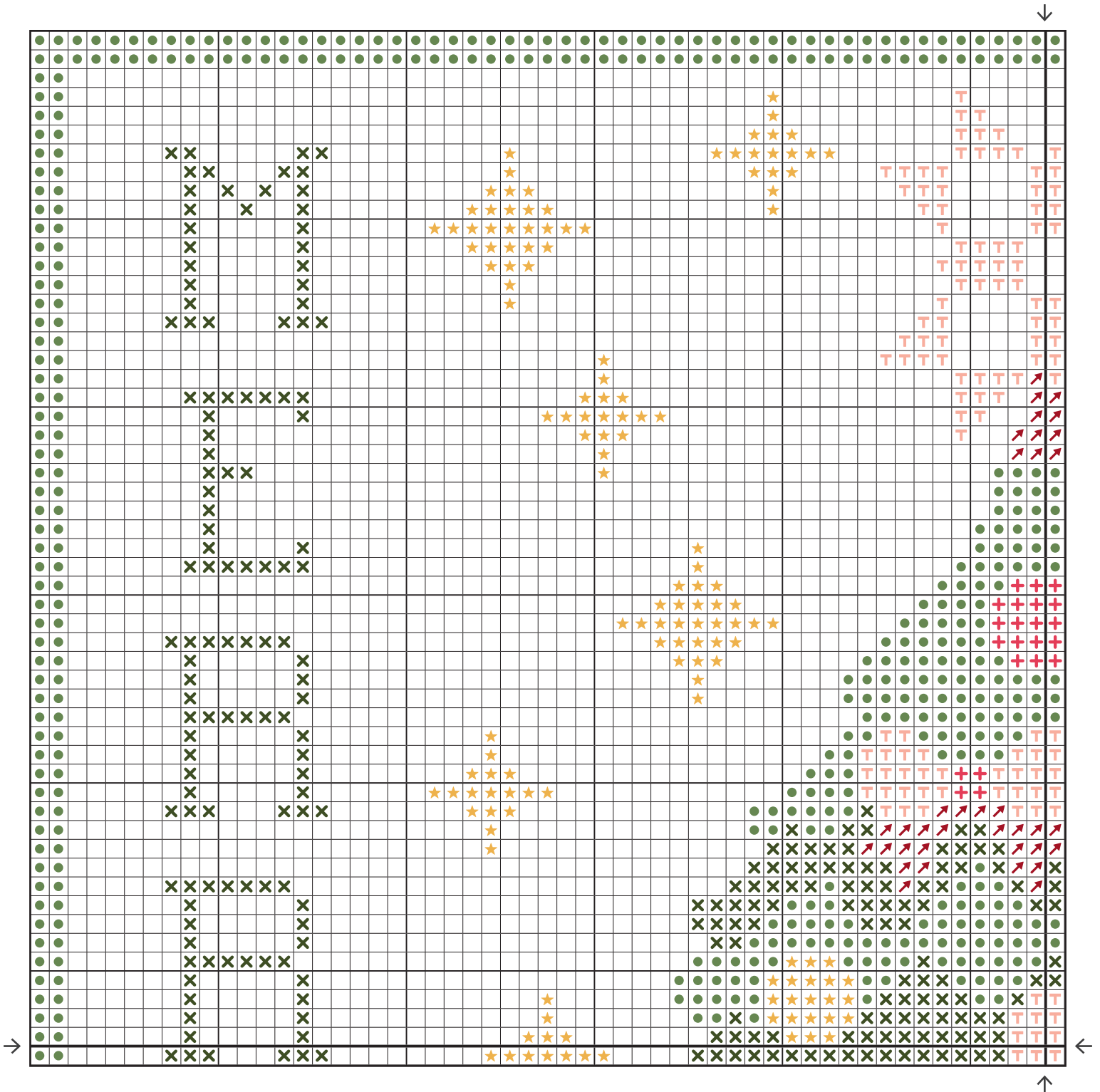
Subscribe to our Fat Quarter Shop FlossTube on YouTube

www.youtube.com/FatQuarterShopFlossTube



MYSTERY Evergreen

Fat Quarter Shop Exclusive Stitch Along



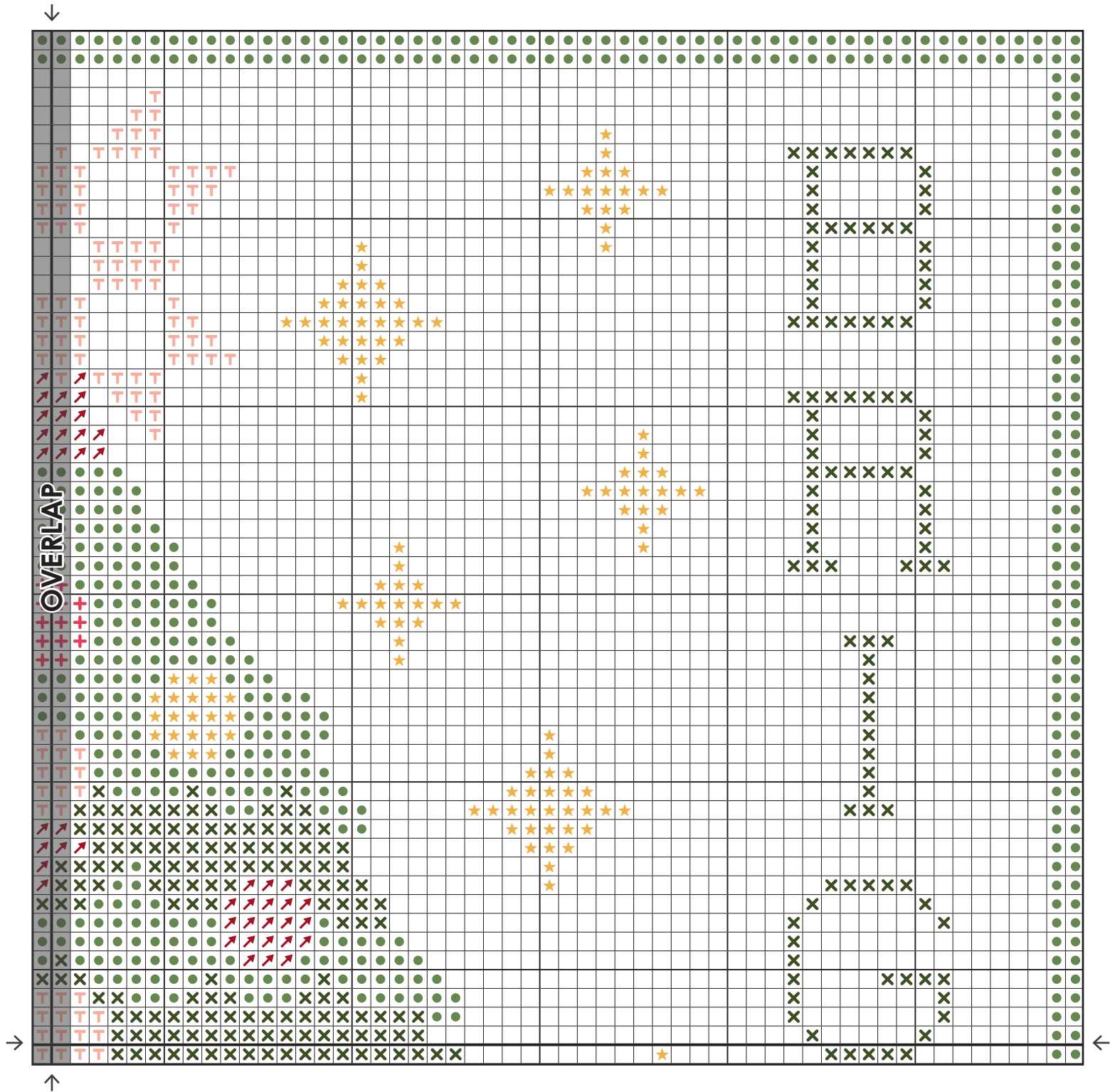
#EvergreenMysterySAL

1-866-826-2069 · www.FatQuarterShop.com



MYSTERY Evergreen

Fat Quarter Shop Exclusive Stitch Along



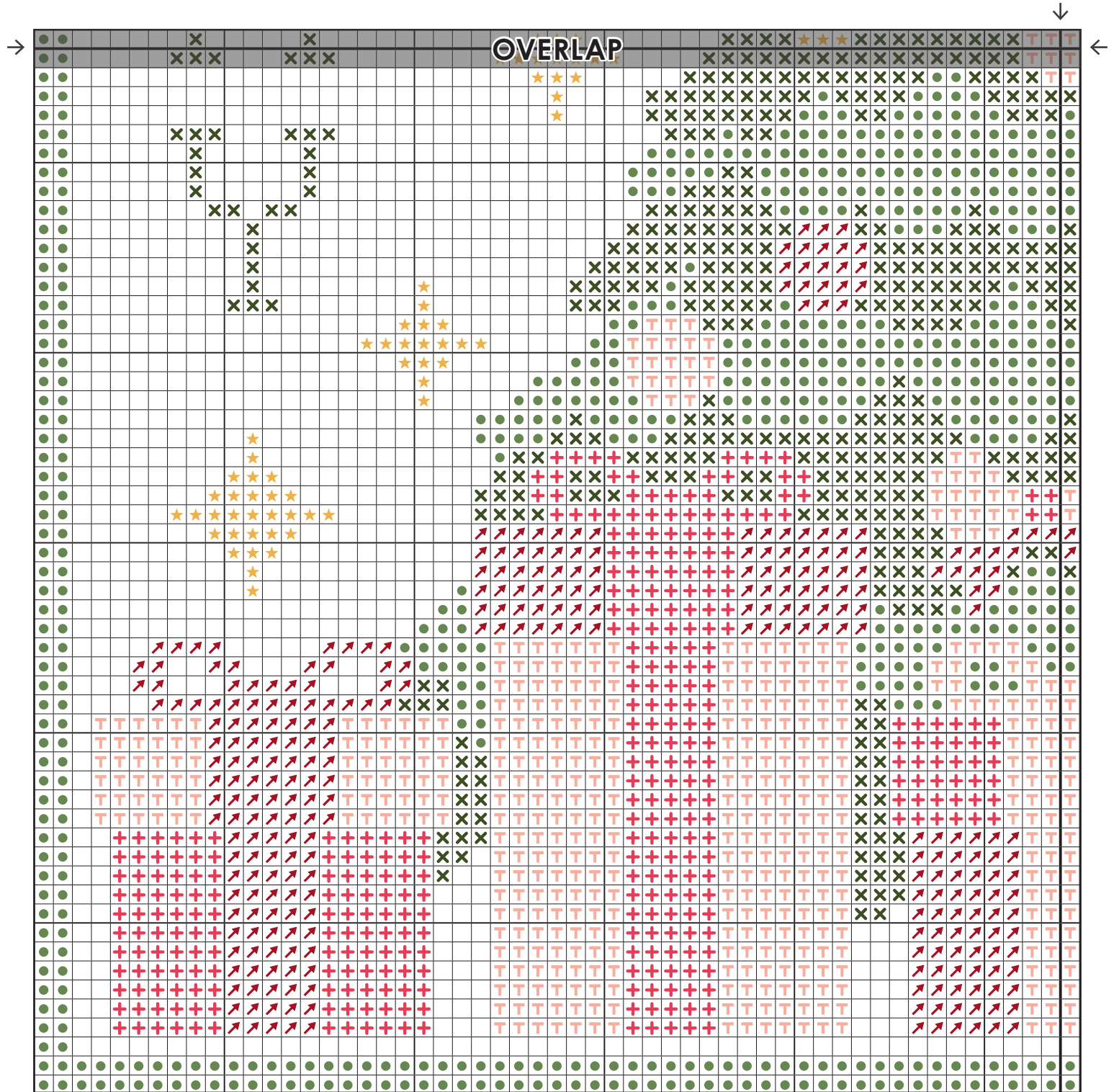
#EvergreenMysterySAL

1-866-826-2069 · www.FatQuarterShop.com



MYSTERY Evergreen

Fat Quarter Shop Exclusive Stitch Along



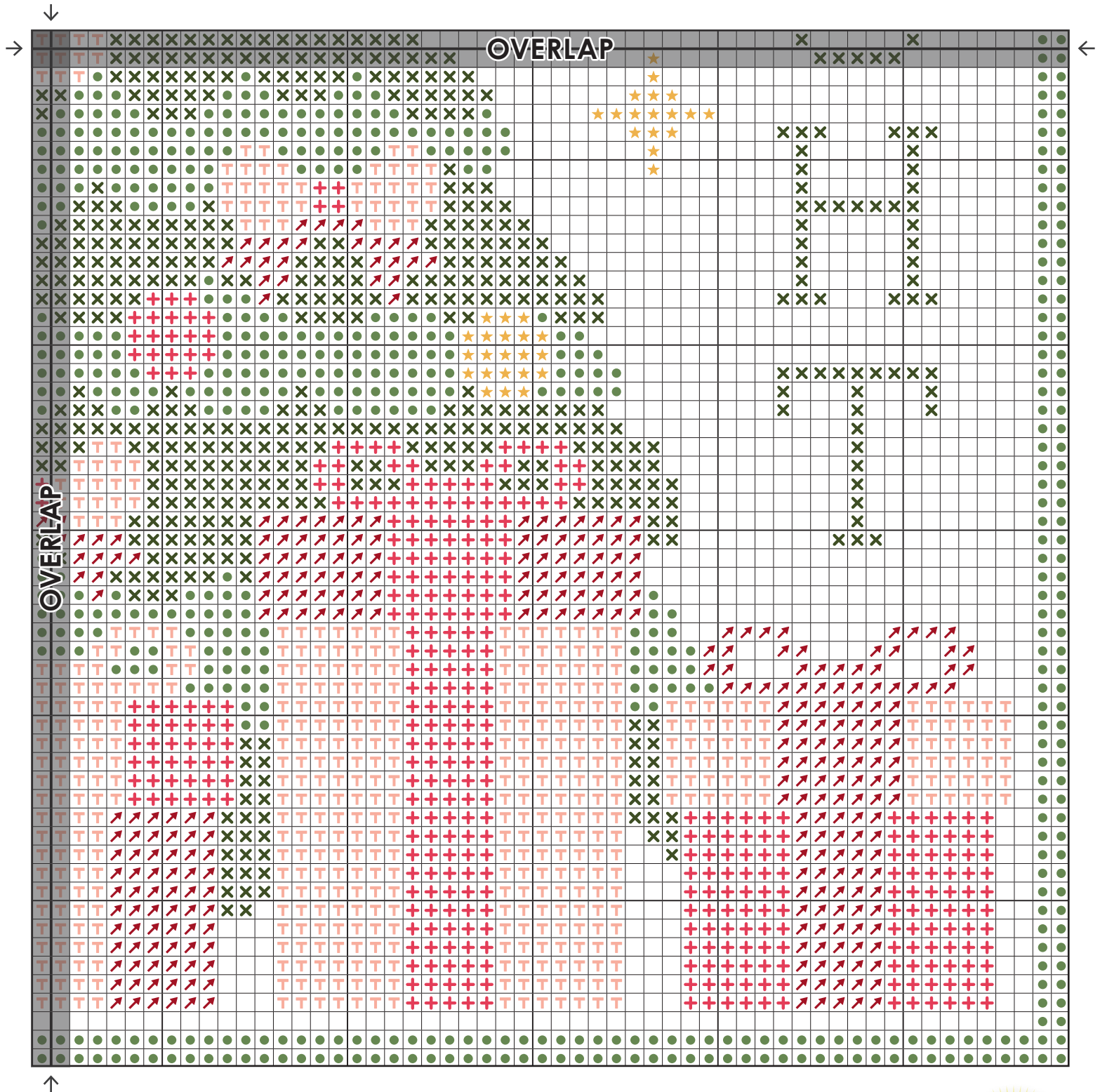
#EvergreenMysterySAL

1-866-826-2069 · www.FatQuarterShop.com



MYSTERY Evergreen

Fat Quarter Shop Exclusive Stitch Along



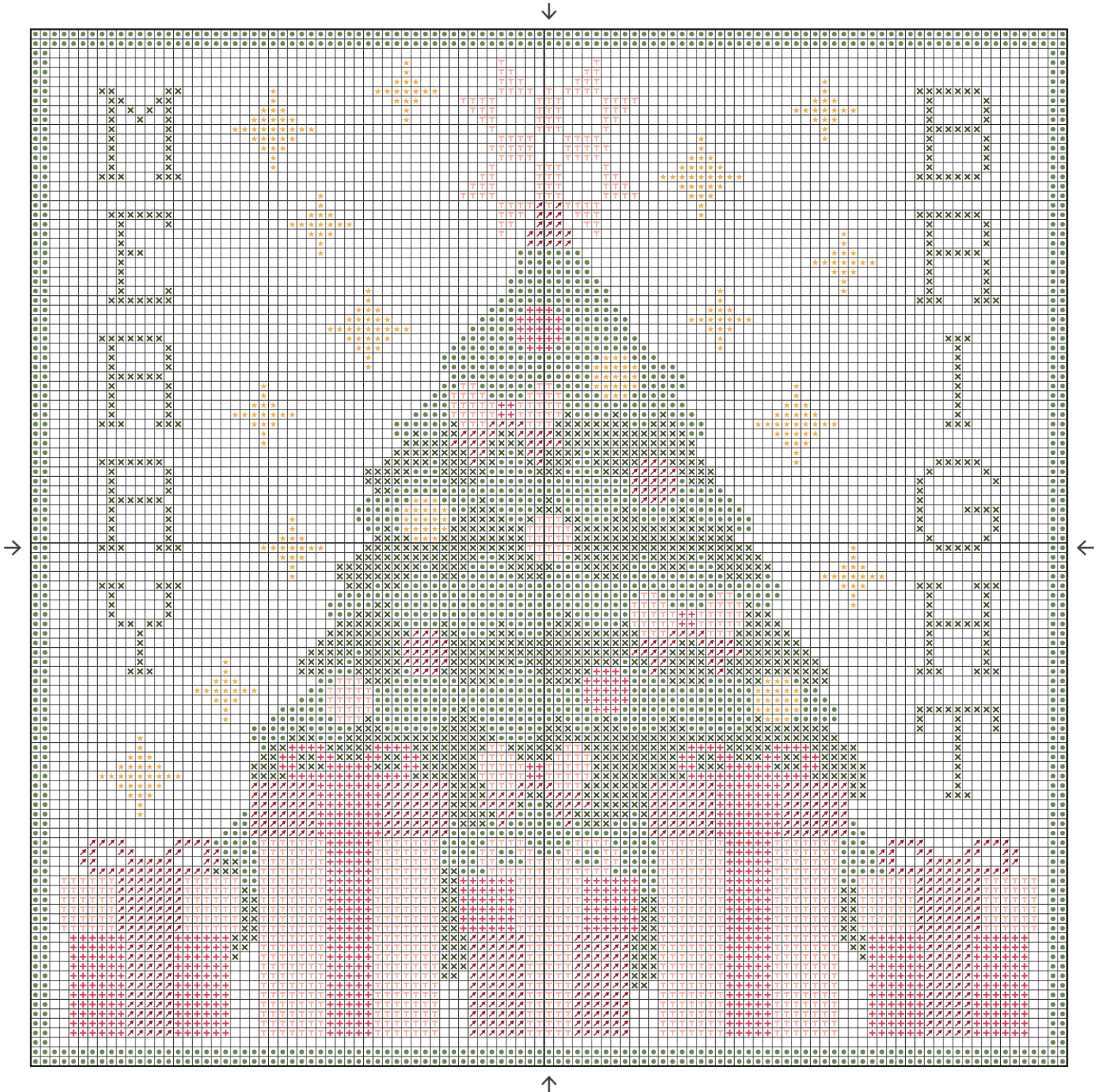
#EvergreenMysterySAL

1-866-826-2069 · www.FatQuarterShop.com



MYSTERY Evergreen

Fat Quarter Shop Exclusive Stitch Along



#EvergreenMysterySAL

1-866-826-2069 · www.FatQuarterShop.com

