



Blue Bricks Quilt

Featuring Artisan by Kaffe Fassett

This quilt features the eclectic prints in Artisan by Kaffe Fassett. The collection features a blend of woven ikats, batiks, and quilting cottons that shout out a modern theme. Build the quilt top, brick by brick and row by row, with large and small rectangles and set them off with narrow sashing strips.

Collection:	Artisan by Kaffe Fassett
Technique:	Piecing, Quilting
Skill Level:	Advanced Beginner
Finished Size:	84" x 91½" (213.4cm x 232.4cm)

Blue Bricks Quilt



Project designed by Kerri Thomson

Tech edited by Barabara Weiland

Fabric Requirements

DESIGN	COLOR	ARTICLE CODE	YARDAGE
(A) Embroidered Flower Border	Blue	PWKF001.BLUEX	1 yard (0.91m)
(B) Raked	Cobalt	PWKF004.COBAL	1 yard (0.91m)
(C) Diamond Stripe	Dark	PWGP170.DARK	1 yard (0.91m)
(D) Squiggle	Green	PWKF005.GREEN	1 yard (0.91m)
(E) Fronds	Blue	BKKF002.0BLUE	1 yard (0.91m)
(F) Painted Pots	Blue	PWKF002.BLUEX	1 yard (0.91m)
(G) Layered Stripe	Blue	PWKF003.BLUEX	¾ yard (68.6cm)
(H) Saw Circles	Royal	BKKF001.0ROYA	¾ yard (68.6cm)
(I) Gerbera	Brown	PWKF006.BROWN	¾ yard (68.6cm)
(J) Chess	Cobalt	BKKF006.0COBA	¾ yard (68.6cm)
(K) Flags	Brown	BKKF003.0BROW	¾ yard (68.6cm)
(L) Mad Plaid	Cobalt	PWBM037.COBAL	2 yards (1.83m)*

* includes binding

Backing (Purchased Separately)

44" (111.76cm) Wide

Artisan - Squiggle	Green	PWKF005.GREEN	7½ yards (7.20m)
--------------------	-------	---------------	------------------

Additional Requirements

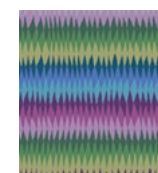
- The Kaffe Collective Aurifil thread 100% cotton 50wt
- 92" x 100" (233.7cm x 254.0cm) quilt batting



(A)



(B)



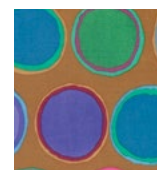
(C)



(D)



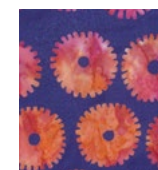
(E)



(F)



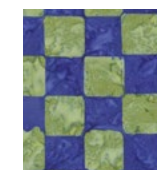
(G)



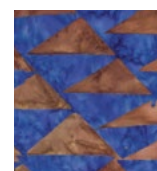
(H)



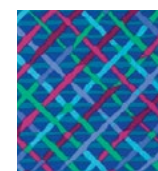
(I)



(J)



(K)



(L)



Backing
44"
(111.76cm)

Blue Bricks Quilt



Cutting

WOF = Width of Fabric

Fabric A, cut:

(3) 9" x WOF (22.9cm x WOF) strips.

Sub-cut: (7) 9" x 12½" (22.9cm x 31.8cm) rectangles

Fabric B, cut:

(3) 9" x WOF (22.9cm x WOF) strips.

Sub-cut: (7) 9" x 12½" (22.9cm x 31.8cm) rectangles
(1) 9" x 6½" (22.9cm x 16.5cm) rectangle

Fabrics C-F, cut from EACH:

(3) 9" x WOF (22.9cm x WOF) strips.

Sub-cut: (6) 9" x 12½" (22.9cm x 31.8cm) rectangles
(1) 9" x 6½" (22.9cm x 16.5cm) rectangle

Fabrics G-K, cut from EACH:

(2) 9" x WOF (22.9cm x WOF) strips.

Sub-cut: (4) 9" x 12½" (22.9cm x 31.8cm) rectangles
(1) 9" x 6½" (22.9cm x 16.5cm) rectangle

Fabric L, cut:

(22) 2" x WOF (5.1cm x WOF) sashing strips.

(9) 2½" x WOF (6.4cm x WOF) strips for the binding. It is not necessary for these to match precisely when joining them to make the binding strip.

Backing Fabric, cut:

(3) 92" x WOF (233.7cm x WOF) strips

Sewing Instructions

Note: Use a ¼" (.6cm) seam allowance throughout. Sew all pieces with right sides together and raw edges even. Use thread that matches or blends with the fabric colors.

Assemble this quilt, row by row, using two different row configurations, Row A and Row B.

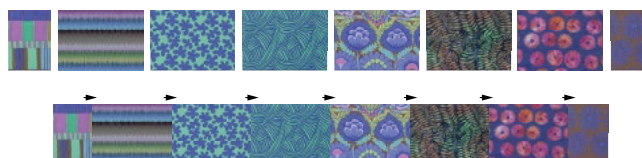
- Make 5 of Row A that begin and end with a small rectangle (half brick).
- Make 4 Row B, each composed of 7 different rectangles (bricks).
- In each configuration, you will use a different assortment of fabric prints.

Block Rows A and B

Note: You may follow the "brick" arrangements for the print placement, row by row, as shown in the Quilt Assembly illustration, or you may arrange the bricks in the print sequence of your choice.

1. Beginning and ending Block Row A with a 9" x 6½" (22.9cm x 16.5cm) rectangle, select and arrange (6) 9" x 12½" (22.9cm x 31.8cm) rectangles of varying prints between them. Sew together along the 9" (22.9cm) edges to make one row and press the seam allowances toward one end of the completed row (Fig. 1).

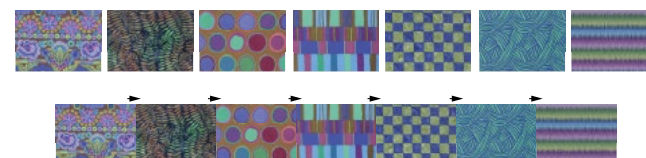
Fig. 1



Make 5 Row A in assorted prints.

2. Repeat step 1 to make 4 more Row A, for a total of 5 Row A.
3. Select (7) 9" x 12½" (22.9cm x 31.8cm) rectangles of different prints and sew together along the 9" (22.9cm) edges to complete 1 Row B (Fig. 2). Press the seam allowances toward one end of the completed row. Repeat to make a total of 4 Row B.

Fig. 2



Make 4 Row B in assorted prints.

Sashing

4. Trim away the selvages at each end of the (22) 2" x WOF (5.1cm x WOF) **Fabric L** strips.
5. Sew the strips together to make one long strip. Press the seams open. Cut (10) 2" x 84½" (5.1cm x 214.6cm) sashing strips from the long strip.

Quilt Assembly

Note: Follow the **Quilt Layout** while assembling the quilt.

6. Arrange Rows A and B in alternating fashion with the 2" x 84½" (5.1cm x 214.6cm) **Fabric L** sashing strips as shown in the **Quilt Layout**. Sew the rows and sashing strips together and press all seam allowances toward the sashing strips. The completed quilt top should measure 84½" x 92" (214.6cm x 233.7cm).

Blue Bricks Quilt



Finishing

7. Remove the selvages from the 3 backing panels and sew together along the long edges. Press the seam allowances away from the center panel. Trim to measure 92" x 100" (233.7cm x 254.0cm).
8. Layer the backing and batting with the quilt top and baste together using your favorite basting method. Quilt as desired. Trim the excess batting and backing even with the quilt-top edges.
9. Sew the (9) 2½" x WOF (6.4cm x WOF) **Fabric L** binding strips together with diagonal seams to make one long strip. Press the seam allowances open. Fold the strip in half lengthwise with wrong sides together and raw edges matching; press.
10. With raw edges matching, sew the binding to the top of the quilt through all layers. Miter the corners as you reach them. Turn the binding to the back of quilt and hand-sew in place.

Quilt Layout

